

Job Name:	Contact:
Ordering Code:	Fixture Type:

## AIRsquare Flush Mount 4.0

### Description

The AIRSquare Flush Mount 4.0 luminaire allows for ultimate flexibility for all lighting projects. Utilizing its ultra slim profile at 5mm, the AIRSquare is perfect for suspended ceiling, surface mounted, embedded, and under cabinet lighting applications. The AIRSquare Flush Mount 4.0 can be embedded in a ceiling or wall, or surface mounted anywhere light is needed. Capable of over 1,300 lumens (infinitely dimmable) @ 134 lumens per watt efficacy. A truly sustainable light source comprised of ceramic and aluminum, the AIRSquare uses 50x fewer raw materials than conventional light sources (measured by weight of fixtures in a typical installation).

### Housing

- 4" x 4" housing delivers 1316 lumens
- 7.6oz (46g/m)
- The ceramic light emitting surface acts as the heatsink and circuit board for the chip scale package LEDs
- The light weight aluminum housing reflects the LED light back out through the ceramic

### Mounting

- Magnetically attaches directly to TRIMLESS or FLUSH MOUNT accessories using powerful magnets (refer to mounting accessory section)
- Capable of being fastened to a variety of mounting surfaces using silicone adhesive, or VHB tape

### Electrical

- 9.8W, 24.15Vdc for 80CRI, 24.7Vdc for 90CRI, constant voltage input
- Remote Class 2 Power Supply required (refer to Power Supply section)
- Maximum 9 luminaires with one 100W power supply
- Unlimited luminaires using multiple power supplies
- Dimmable to less than 1% (refer to Control Accessories section)
- Interconnection/Cabling (supplied by others): Plenum Rated 2-18 AWG Stranded with Flame Resistant Insulation. Example: BELDEN # 6300UE
- Integrated thermal feedback protection prevents overheating under abnormal power conditions

### Listings

- cULus Listed to UL2108
- Rated both Type IC & non-IC
- Suitable for dry and damp locations
- Operating environment: -10°F to 115°F / -23°C to 46°C
- Certified to be the first, and only, lighting product to obtain an **LBC Red List Free** Declare label with the International Living Future Institute's (ILFI) Living Building Challenge.

Delivered Lumens Per Foot	CCT
1316	4000K
1291	3500K
1290	3000K
1180	2700K



Side View

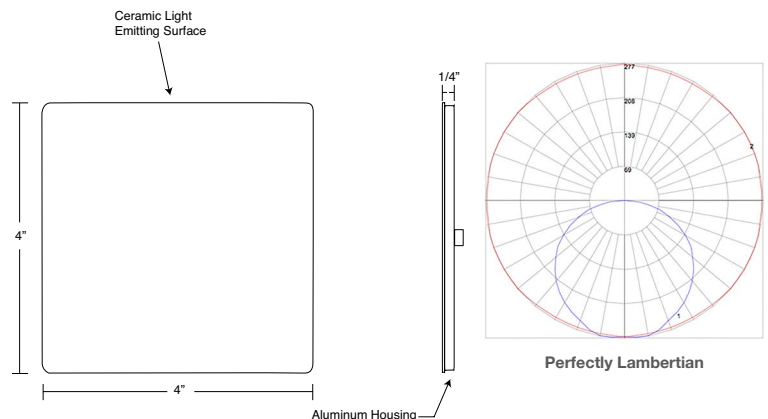
## Ordering Codes

Follow the steps to specify your fixture, example: **125 - FM - 44 - 30K - 80**

Part Number	Mounting	Width	CCT	CRI
125	AIRsquare	44	27K 2700K	80 80CRI
	FM Flush Mount	4" x 4"	30K 3000K	90 <sup>1</sup> 90CRI
			35K 3500K	
			40K 4000K	

### Notes

1. 90 CRI is ONLY available in 2700K and 3000K.



Job Name:	Contact:
Ordering Code:	Fixture Type:

## LED Performance

<b>LED</b>	Samsung chip scale package (LM101A series)
<b>SDCM</b>	3 Step MacAdam Ellipse
<b>CCT</b>	2700K, 3000K, 3500K, 4000K
<b>CRI Ra</b>	82-84 typical (consult factory for 90CRI lead time)
<b>Efficacy</b>	134 lumens/Watt (4000K)
<b>Light Emitting Surface</b>	Reaches 60°C in a 25°C environment at 24.5Vdc input.
<b>Life</b>	L70 > 54,000hrs
<b>Warranty</b>	5 year limited fixture warranty

## Power supplies

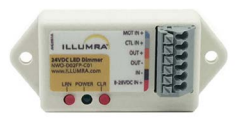
(factory-set to 24.5Vdc output)

<b>P70495-100-245</b>	96W/24.5V adjustable Power Supply (Meanwell HLG-100H-24A) with ETL Listed Enclosure / Operates 0 to 9 luminaires
<b>P70495-80-245</b>	80W/24.5V adjustable Power Supply (Meanwell HLG-80H-24A) with ETL Listed Enclosure / Operates 0 to 7 luminaires
<b>P70495-60-245</b>	60W/24.5V adjustable Power Supply (Meanwell HLG-60H-24A) with ETL Listed Enclosure / Operates 0 to 5 luminaires
<b>P70495-40-245</b>	40W/24.5V adjustable Power Supply (Meanwell HLG-40H-24A) with ETL Listed Enclosure / Operates 0 to 3 luminaires

## Control Accessories

ILLUMRA™ Constant Voltage LED Dimming Controllers deliver 65,000 PWM dimming steps to provide ultra smooth dimming performance through all light levels. Pair these controllers with either hardwired 0-10V dimming systems or Illumra's wireless Rocker Switches. These Controllers must be wired between the output of the Power Supply and the input of the LED Luminaire, so no auxiliary power source is required.

**p/n: 70496-001** ILLUMRA™ (hardwired) 0-10V Controller NWO-D02FP-C01  
 Use this controller to support 0-10V dimming. Compatible with industry standard 0-10V dimmers (Leviton IP710-DLX or similar). Use one controller per Power Supply.



**p/n: 70496-002** ILLUMRA™ Wireless Controller E9X-D02FL  
 Use this controller to support wireless dimming. Compatible with Illumra's Wireless Rocker Switches using EnOcean technology. Use one controller per Power Supply.



ILLUMRA™ self-powered Rocker Switches use no wires or batteries. Pressing the switch creates the energy to transmit a wireless signal that controls lights or other devices connected to EnOcean receivers. One Rocker Switch may be paired with one or more Controllers, or multiple Rocker Switches (up to 25) may be paired with one Controller. 50-150 foot range (typical) using 902MHZ.

**p/n: 70497-001WH** ILLUMRA™ Wireless Single Rocker Switch (WHITE) E9T-S1AWH  
 Use this Rocker Switch for ON/OFF/Dimming (100% to <1%) control. Compatible with Illumra's Wireless Controllers.



**p/n: 70497-002WH** ILLUMRA™ Wireless Dual Rocker Switch (WHITE) E9T-S2AWH  
 Use this Rocker Switch for ON/OFF/Dimming (100% to <1%) control of two lights or two groups of lights. Compatible with Illumra's Wireless Controllers.



Job Name:

Contact:

Ordering Code:

Fixture Type:

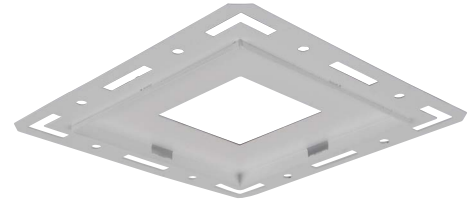
## AIRsquare Mounting Accessories

The AIRsquare luminaire can be magnetically attached to these FRAME Accessories for a seamless installation.

### TRIMLESS/MUD-IN FRAME

**p/n: 125-TF**  
(AIRsquare TRIMLESS/MUD-IN FRAME)

Install this TRIMLESS FRAME into a 4-1/4" x 4-1/4" ceiling cutout, fastening the FRAME using the supplied #8 flat head undercut screws. Use standard joint compound to finish the ceiling, creating a sharp and clean opening. No risk damaging the LED – the FRAME installation is completed prior to installing the AIRsquare.



### FLUSH MOUNT FRAME

**p/n: 125-FF-WH**  
(AIRsquare FLUSH MOUNT FRAME, white finish)

Offered in both white or black finish. Install this FRAME into a 4-1/8" x 4-1/8" ceiling cutout using the integrated mounting springs. Ceiling thickness range of 1/8" to 1-1/4" thick.



**P/N: 125-FF-BK**  
(AIRsquare FLUSH MOUNT FRAME, black finish)