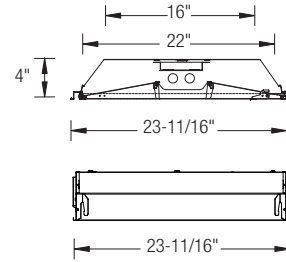
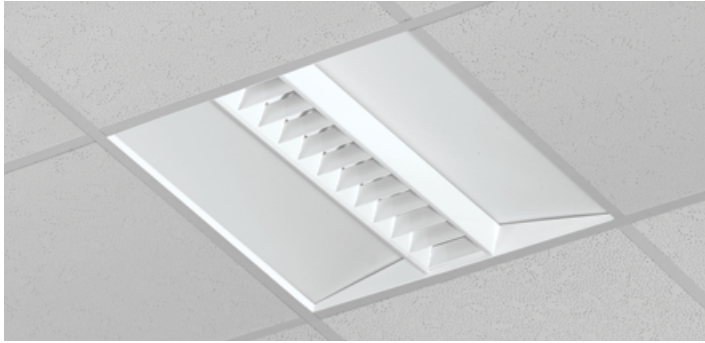


### T8/T5 - 2' X 2' FLUORESCENT RECESSED VOLUMETRIC (CENTER MOUNT WITH LOUVER)



#### APPLICATION:

Ideal for any application which requires high-efficiency lighting with minimum energy consumption such as educational institutions, office spaces, health care facilities, office complexes and retail stores.

#### EFFICIENT SOLUTION:

High reflectance optical engine delivers main beam focus through the revolutionary flat High Transmission (HT) acrylic diffusing panel with low brightness glow. Center blade louvers control light and distribute light to task. With 95% transmission and 89% haze, the result is extraordinary control and efficiency.

**OPTICAL SYSTEM:** A+ Rated high-gloss white powder coat paint provides maximum distribution and visual comfort.

#### PRODUCT FEATURES:

- Dawn Series proprietary "light lock system" prevents light leakage at both ends of lamp shields
- Door frame hinges for easy installation of lamps and hassle-free maintenance
- Ballast can be accessed from below the ceiling
- All sides and corners are turned in and hemmed, removing sharp edges for safe handling and installation, built-in earthquake clips
- Construction of lamp shields conceals lamps and ballast access cover
- Supplied standard with Philips Advance, GE or Universal ballast
- Wide variety of dimming and daylight harvesting options available
- CEE qualified ballast comes standard on most fixture options (Consult factory for details)
- NEC required ballast disconnect is standard

#### LISTING

UL/C-UL listed to US and Canadian standard

#### WARRANTY

Guaranteed for one year against mechanical defects

### Ordering Information > Example: 22-OD4V-2-17-T8-ADV-10-MVOLT

<b>22</b>	<b>OD4V</b>								
<b>FIXTURE SIZE</b> 22-2' X 2'	<b>TRIM TYPE</b> (Blank) Grid (Consult factory for Slot T mounting option)			<b>VOLTAGE<sup>1</sup></b> (Blank) - MVOLT (120/277) 120 277 347	<b># OF BALLAST</b> (Blank) - 1 Ballast 2 - 2 Ballasts	<b>BALLAST FACTOR</b> (Blank) - Normal BF HBF - High BF LBF - Low BF	<b>LAMP INSTALLED</b> (Blank) - No lamp L30K - 3000K L35K - 3500K L41K - 4100K L50K - 5000K		
<b>SERIES</b> OD4V-Oracle Dawn Direct/Indirect	<b># OF LAMPS/LAMP TYPE</b>			<b>*MASTER/SATELLITE</b>					
	1-17-T8 (1 lamp/17W/T8)	1-14-T5 (1 lamp/14W/T5)	2-14-T5 (2 lamps/14W/T5)	<b>MAS1</b> - Master fixture w/ 1 ballast & 11 ft. flex <b>MAS2</b> - Master fixture w/ 2 ballast & 11 ft. flex <b>SAT</b> - Satellite fixture w/o ballast <i>*must be ordered separately</i> <i>EX: 22-OD4V-2-17-T8-MAS2 and 22-OD4V-2-17-T8-SAT</i> <i>*Available only with 2 or 3 lamps T8 only. Dimming option is not available when ordering Master/Satellite.</i>					
	2-17-T8 (2 lamps/17W/T8)	3-14-T5 (3 lamps/14W/T5)	1-24-T5HO (1 lamp/24W/T5HO)						
	3-17-T8 (3 lamps/17W/T8)	2-24-T5HO (2 lamps/24W/T5HO)	3-24-T5HO (3 lamps/24W/T5HO)						
		1-40-BX (1 lamp/40W/BX TT)	2-40-BX (2 lamps/40W/BX TT)						
		3-40-BX (3 lamps/40W/BX TT)							
	(For other lamp type, please consult factory)								
<b>BALLAST CONFIGURATION &amp; CODE</b>									
	17W/T8	14W/T5	24W/T5HO	40W/BX	DESCRIPTION				
	(Blank)	-	-	(Blank)	Electronic Instant Start				
	EPS	(Blank)	(Blank)	EPS	Electronic Program Start				
	ADV-7	-	-	-	Advance Mark-7 <sup>1</sup>				
	ADV-10	-	ADV-10	ADV-10	Advance Mark-10 <sup>1</sup>				
	-	-	-	-	Advance Optanium <sup>1</sup>				
	ADV-ESS	-	-	-	Advance Essential <sup>1</sup>				
	ADV-ROVR <sup>1</sup>	-	-	-	Advance Rover <sup>1</sup>				
	-	-	-	-	Lutron Ecosystem H-Series <sup>1</sup>				
	-	-	-	-	Lutron Tu-Wire <sup>1</sup>				
	LUT-EC5 <sup>1</sup>	LUT-EC5 <sup>1</sup>	LUT-EC5	LUT-EC5	Lutron Ecosystem <sup>1</sup>				
	LUT-EC3	LUT-EC3 <sup>1</sup>	LUT-EC3	LUT-EC3	Lutron Eco-10 <sup>1</sup>				
	-	-	-	-	Lutron Tve <sup>1</sup>				
	LUT-H3D	LUT-H3D <sup>1</sup>	LUT-H3D	LUT-H3D	Lutron Hi-Lume 3D <sup>1</sup>				
	-	-	-	-	Lutron Ecosystem (347V Only) <sup>1</sup>				
	1- Voltage must be specified for dimming ballast.								
<b>EMERGENCY BATTERY PACK OPTIONS (L. = LUMENS)</b>									
ORDER CODE	DESCRIPTION								
EMG-T8-BX-450	Up to 450 L. for T8 or BX								
EMG-T8-BX-600	Up to 600 L. for T8 or BX								
EMG-T8-BX-700	Up to 700 L. for T8 or BX								
EMG-T8-BX-1400	Up to 1400 L. for T8 or BX								
EMG-T5-520	Up to 520 L. for T5								
EMG-T5-T5HO-700	Up to 700 L. for T5 or T5HO								
EMG-T5-T5HO-1300	Up to 1300 L. for T5 or T5HO								
EMG-T8-BX-T5-T5HO-3200	Up to 3200 L. for T8, BX, T5 or T5HO								
EMG-SD-T8-BX-T5-T5HO-1400	Self-Diagnostic 1400 L. for T8, BX, T5 or T5HO								
EMG-ICE-T8-BX-T5-T5HO-1400	ICE Pack 1400 L. for T8, BX, T5 or T5HO								
GTD	Generator Transfer Device								
MANY OTHER BODINE AND IOTA EMERGENCY PACKS ARE AVAILABLE. PLEASE CONSULT FACTORY. VISIT WWW.BODINE.COM OR WWW.IOTAENGINEERING.COM FOR MORE DETAILS.									
<b>OTHER OPTIONS</b>									
22FK	- Flange Kit for 2' X 2' Fixture	SBF			- Internal Slow-Blow Fuse				
C3	- 6' 3-wire Flex Cable (Single Circuit)	RIS			- Radio Interference Suppressor				
C4	- 6' 4-wire Flex Cable (Double Circuit)	USA			- Made in America Compliance				
FBF	- Internal Fast Blow Fuse								

T5/T8  
2' X 2'  
OD4V

Fluorescent Recessed Volumetric