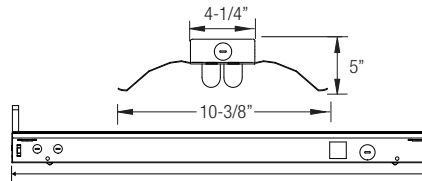


### T5 FLUORESCENT INDUSTRIAL STRIP W/ REFLECTOR (1 OR 2 LAMP)



LENGTH  
2' = 24"  
3' = 36"  
4' = 48"  
8' = 96"



#### PRODUCT FEATURES:

- Heavy-duty 20-gauge steel utilized throughout for durability and code compliance
- Powder-coated painted for maximum operating life
- Pretreated with five-stage iron phosphate process to ensure superior paint adhesion
- Painted high-gloss baked white enamel
- Suitable for dry and damp environments
- Thermally protected, self-resetting, Class P, NPF, non-PCB and UL listed ballast
- Suitable for surface and/or suspended mounting
- Individual or continuous row mounting
- Standard reflector is manufactured in high reflectance white
- Reflector is secured to housing with 1/4 turn fasteners (ships separately)
- Reflector options:
  - Aluminium high reflectance white paint/slotted (20% uplight)
  - Aluminium specular silver/slotted (20% uplight)
  - Aluminium white asymmetrical reflector
  - Aluminium specular silver/asymmetrical reflector

- NEC required ballast disconnect is standard
- CEE qualified ballast comes standard on most fixture options (Consult factory for details)

#### LISTING

UL/C-UL listed to US and Canadian standard

#### WARRANTY

Guaranteed for one year against mechanical defects

**NOTE: All Aluminium Reflectors are special order (check with factory)**

#### Ordering Information > Example: 2-OCR-2-14-T5-MVOLT-EMG-T5-T5HO-700

<b>2</b>	<b>OCR</b>								
<b>FIXTURE SIZE</b> 2- 2'	<b>SERIES</b> OCR Oracle Industrial Series with Reflector	<b>WATTAGE</b> 2' FIXTURE 2-14-T5 (2 lamps/14W/T5) 2-24-T5HO (2 lamps/24W/T5HO)	<b>VOLTAGE<sup>2</sup></b> (Blank)- MVOLT (120/277) 120 277 347	<b># OF BALLAST</b> (Blank)- 1 Ballast 2- 2 Ballasts	<b>BALLAST FACTOR</b> (Blank)- Normal BF HBF- High BF LBF- Low BF	<b>REFLECTOR OPTIONS</b> Refer to next page			

BALLAST CONFIGURATION & CODE		
14W/T5	24W/T5HO	DESCRIPTION
-	-	Electronic Instant Start
(Blank)	(Blank)	Electronic Program Start
-	-	Advance Mark-7 <sup>2</sup>
-	-	Advance Mark-10 <sup>2</sup>
-	-	Advance Optanium <sup>2</sup>
-	-	Advance Essential <sup>2</sup>
-	-	Advance Rover <sup>2</sup>
-	-	Lutron Ecosystem H-Series <sup>2</sup>
-	-	Lutron Tu-Wire <sup>2</sup>
LUT-EC5	LUT-EC5	Lutron Ecosystem <sup>2</sup>
LUT-EC3	LUT-EC3	Lutron Eco-10 <sup>2</sup>
-	-	Lutron Tve <sup>2</sup>
LUT-H3D	LUT-H3D	Lutron Hi-Lume 3D <sup>2</sup>
-	-	Lutron Ecosystem (347V Only) <sup>2</sup>

1- Requires 2 Ballasts for 4-lamps.  
2- Voltage must be specified for dimming ballast.

#### REMOTE EMERGENCY BATTERY PACK OPTIONS (L. = LUMENS)

ORDER CODE	DESCRIPTION
EMG-T5-T5HO-700	Up to 700 L. for T5 or T5HO
EMG-T5-T5HO-1300	Up to 1300 L. for T5 or T5HO
EMG-T8-BX-T5-T5HO-3200	Up to 3200 L. for T8, BX, T5 or T5HO
EMG-SD-T8-BX-T5-T5HO-1400	Self-Diagnostic 1400 L. for T8, BX, T5 or T5HO
EMG-ICE-T8-BX-T5-T5HO-1400	ICE Pack 1400 L. for T8, BX, T5 or T5HO
GTD	Generator Transfer Device

#### WIRING OPTIONS

<b>C3</b>	- 6' 3-wire Flex Cable (Single Circuit)
<b>C4</b>	- 6' 4-wire Flex Cable (Double Circuit)
<b>FBF</b>	- Internal Fast Blow Fuse
<b>SBF</b>	- Internal Slow-Blow Fuse
<b>RIS</b>	- Radio Interference Suppressor

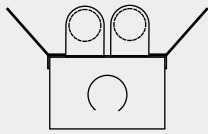
#### OTHER OPTIONS

<b>OCRWG1</b>	- Wireguard (Only available with SYM reflectors)
<b>OCNRMS</b>	- Motion Sensor
<b>OCNRVH</b>	- V Hook and Chain Kit
<b>OCNRGSS</b>	- Cable Gripper Suspension Kit
<b>USA</b>	- Made in America Compliance

# ACCESSORIES SECTION

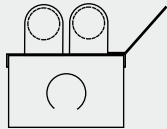
## WHITE/ SILVER REFLECTOR GUIDE FOR OCR

### WHITE REFLECTOR FOR OCR-2 LAMP



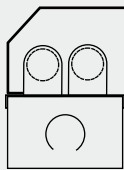
#### SYMMETRICAL

2-OCR-2-SYM-WH  
3-OCR-2-SYM-WH  
4-OCR-2-SYM-WH  
8-OCR-2-SYM-WH



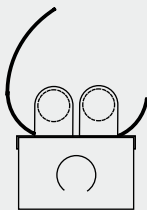
#### ASYMMETRICAL

2-OCR-2-ASY-WH  
3-OCR-2-ASY-WH  
4-OCR-2-ASY-WH  
8-OCR-2-ASY-WH



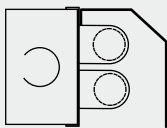
#### INSIDE ASYMMETRICAL

2-OCR-2-IAS-WH  
3-OCR-2-IAS-WH  
4-OCR-2-IAS-WH  
8-OCR-2-IAS-WH



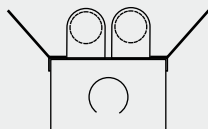
#### ELLIPTICAL

2-OCR-2-ELR-WH  
3-OCR-2-ELR-WH  
4-OCR-2-ELR-WH  
8-OCR-2-ELR-WH



#### DOWNLIGHT

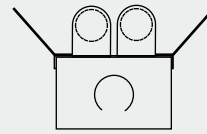
2-OCR-2-DLRL-WH  
3-OCR-2-DLRL-WH  
4-OCR-2-DLRL-WH  
8-OCR-2-DLRL-WH



#### UPLIGHT SYMMETRICAL

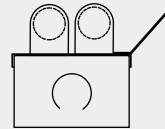
2-OCR-2-SYM-UPL-WH  
3-OCR-2-SYM-UPL-WH  
4-OCR-2-SYM-UPL-WH  
8-OCR-2-SYM-UPL-WH

### SILVER REFLECTOR FOR OCR-2 LAMP



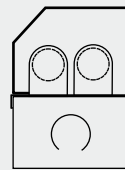
#### SYMMETRICAL

2-OCR-2-SYM-SR  
3-OCR-2-SYM-SR  
4-OCR-2-SYM-SR  
8-OCR-2-SYM-SR



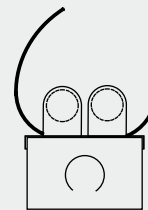
#### ASYMMETRICAL

2-OCR-2-ASY-SR  
3-OCR-2-ASY-SR  
4-OCR-2-ASY-SR  
8-OCR-2-ASY-SR



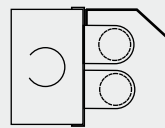
#### INSIDE ASYMMETRICAL

2-OCR-2-IAS-SR  
3-OCR-2-IAS-SR  
4-OCR-2-IAS-SR  
8-OCR-2-IAS-SR



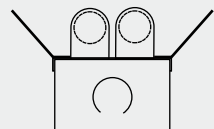
#### ELLIPTICAL

2-OCR-2-ELR-SR  
3-OCR-2-ELR-SR  
4-OCR-2-ELR-SR  
8-OCR-2-ELR-SR



#### DOWNLIGHT

2-OCR-2-DLRL-SR  
3-OCR-2-DLRL-SR  
4-OCR-2-DLRL-SR  
8-OCR-2-DLRL-SR



#### UPLIGHT SYMMETRICAL

2-OCR-2-SYM-UPL-SR  
3-OCR-2-SYM-UPL-SR  
4-OCR-2-SYM-UPL-SR  
8-OCR-2-SYM-UPL-SR

T8/T5

OCR

Accessories - Reflector Guide

#### REFLECTOR FINISH

Reflectors are manufactured in Aluminium high reflectance specular Silver & White finishes. Custom colors or finishes are available upon request.

:: WH (High Efficient White Reflector)

:: SR (High Efficient Silver Reflector)

#### REFLECTOR MOUNTING

Reflectors mount onto existing ballast covers.