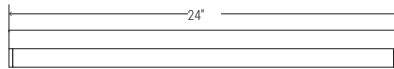
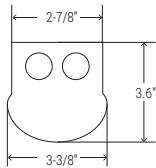




MULTI-LUMEN
SELECTOR

EASY 3 COLORS
SELECTOR
3500K • 4000K • 5000K



NOMINAL LUMENS	DELIVERED LUMENS	WATTAGE
4000	4373	31.6 W
3000	3082	21.3 W
2000	2448	16.7 W

Based on 4000K, 85+ CRI. Actual wattage may vary +/- 5%

FEATURES

The OEC is a versatile LED strip light that can be suspended or surface mounted. Available in single pendant or continuous mounting with a form factor that ensures continuous illumination. An acrylic lens delivers low-glare, even illumination for comfortable environments. The slim 3-3/8" profile makes the OEC ideal for illuminating a variety of narrow applications such as aisles, hallways, corridors, parking garages, as well as education, healthcare, and transportation applications.

LUMENS	2000/3000/4000
CCT	35K/40K/50K
CRI	85+
COLOR QUALITY	3 Step MacAdam Ellipse
LENGTH	2', 4' or 8'
MOUNTING	Suspended or Surface
DIMMING & CONTROL	0-10V Flicker Free 10% Dimming Standard (DIM10)
EMERGENCY	10W - Up to 1000L output
LIFETIME	L70 at 50,000 Hours
PHOTOMETRIC TESTS	In Accordance with IES LM79-08, LM80 and TM-30, TM-21



OPTICS & PERFORMANCE

Frosted acrylic lens provides even, shadow-free illumination. Lens has tool-less removal, ensuring easy upgrading and maintenance.

CONSTRUCTION

Heavy-duty 20-gauge cold rolled steel body, post-painted. High-gloss white finish is pre-treated with 5-stage iron phosphate coating, which provides superior paint adhesion and protection against weathering.

INSTALLATION

Surface or suspended mounting; individual or continuous row mounting (CRM). The first luminaire in the row for CRM will always be the power supply feed. After plugging in the male and female harnesses, which are supplied with each luminaire, they will easily slide together. Secure with two screws in the connecting brackets.

DRIVER ELECTRICAL INFORMATION

Powered by high-quality constant-current power LED drivers, rated for 50 to 60Hz at 120-277V input, produce less than 20% THD, and have a power factor of .90 to 1.00. Male and female 18-gauge 6 wire plug connectors are included with every luminaire to allow for simple, hassle-free continuous wiring. Each luminaire must be installed male to female.

DIMMING & DRIVER INFORMATION

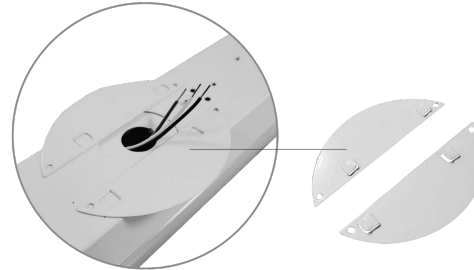
DIM10 - Flicker Free 10% Dimming Standard (DIM10) 0-10V dimming on either MVOLT 120, 277V.

WARRANTY

Five-year warranty for parts and components. (Labor not included)

LISTINGS

c-UL-us - Listed for Feed Through Wiring.
Listed for DLC, California Title 24 compliant.
c UL us Listed for Damp location



Cover for junction box is shipped standard with fixture, along with necessary hardware to secure cover to j-box.

Example: **2-OEC-LED-2000L/3000L/4000L-DIM10-MVOLT-35K/40K/50K-85**

2	OEC	LED									
FIXTURE SIZE	SERIES	TYPE	LUMENS	DIMMING	VOLTAGE	CCT	CRI	EMERGENCY	MOUNTING	OTHER OPTIONS	
2 - 2'	OEC - LED General Linear	LED	2000L/3000L/4000L	DIM10 - 0-10V Dimming	MVOLT	35K/40K/50K	85	0-EMG-LED-10W	CRM - Continuous Row Mounting	OCGSS - Cable Gripper Suspension Kit WG - WireGuard S05 - Power cord with 5 conductors for 0-10v dimming fixtures S06 - Power cord with 6 conductors for 0-10V dimming and with emergency OCVH - V-Hook & chain MFG-BRACKET-CR-OEC - bracket for continuous row mounting	
										SIDE MOUNT	
										OSFHU-LTW - ON/OFF Line Voltage HB011-PDX - Occupancy Sensor with 0-10V Dimming FSP-311-B-D - 0-10V continuous dimming PIR photo/motion sensor with bluetooth control option.	

2-OEC-LED-2000L-3000L-4000L-DIM10-MVOLT-35K-40K-50K-85(2000L)

TEST NO.: EL12271996

INPUT WATTS: 16.7

LUMENS: 2448

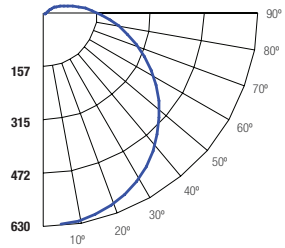
CRI: 85

EFFICACY: 147

CCT: 40K

SPACING CRITERIA: 1.40

Candle Power Distribution (Candelas)



Zonal Lumens Summary

Zone	Lumens	%Lamp	%Fixt
0-20	229.80	9.40	9.40
0-30	488.11	20.00	19.90
0-40	801.78	32.80	32.80
0-60	1451.49	59.30	59.30
0-80	1942.39	79.40	79.30
0-90	2099.38	85.80	85.80

Luminance (Average candela/M²)

Angle in Degrees	Average 0°	Average 45°	Average 90°
45	8945	9603	10545
55	8361	9647	11182
65	7645	10203	12613
75	6618	12417	16546
85	5289	26358	38375

Lumens Per Zone

Zone	Lumens
0-10	59.51
10-20	170.29
20-30	258.30
30-40	313.67
40-50	332.55
50-60	317.16
60-70	274.60
70-80	216.30
80-90	156.99

Candela Tabulation

0	5	15	25	35	45	55	65	75	85	90
0	629.396	628.870	602.080	549.070	475.310	388.190	294.320	198.280	105.120	28.290
5	628.870	602.080	549.070	475.310	388.190	294.320	198.280	105.120	28.290	5.290
15	602.080	549.070	475.310	388.190	294.320	198.280	105.120	28.290	5.290	0
25	549.070	475.310	388.190	294.320	198.280	105.120	28.290	5.290	0	0
35	475.310	388.190	294.320	198.280	105.120	28.290	5.290	0	0	0
45	388.190	294.320	198.280	105.120	28.290	5.290	0	0	0	0
55	294.320	198.280	105.120	28.290	5.290	0	0	0	0	0
65	198.280	105.120	28.290	5.290	0	0	0	0	0	0
75	105.120	28.290	5.290	0	0	0	0	0	0	0
85	28.290	5.290	0	0	0	0	0	0	0	0
90	5.290	0	0	0	0	0	0	0	0	0

Coefficients of Utilization - Zonal Cavity Method

Effective Floor Cavity Reflectance 0.20

ROOM CAVITY RATIO	RC	80%				70%				50%				30%				10%				0%
		RW	70%	50%	30%	10%	70%	50%	30%	10%	50%	30%	10%	30%	10%	50%	30%	10%				
0	116	116	116	116	116	111	111	111	111	103	103	103	96	96	96	89	89	89	86			
1	103	97	92	88	88	99	94	89	85	87	83	80	80	77	75	75	72	70	67			
2	93	84	76	70	70	89	81	74	68	75	69	64	69	65	60	64	60	57	54			
3	84	73	64	57	57	81	70	62	56	65	58	53	61	55	50	56	52	48	45			
4	77	64	55	48	48	73	62	53	47	58	50	45	54	47	42	50	45	40	38			
5	71	57	48	41	41	67	55	46	40	51	44	38	48	42	37	45	39	35	32			
6	65	51	42	35	35	62	50	41	35	46	39	33	43	37	32	40	35	30	28			
7	60	46	37	31	31	58	45	36	30	42	35	29	39	33	28	37	31	27	25			
8	56	42	34	28	28	54	41	33	27	38	31	26	36	30	25	34	28	24	22			
9	52	39	30	25	25	50	37	30	24	35	28	23	33	27	23	31	26	22	20			
10	49	36	28	22	22	47	35	27	22	33	26	21	31	25	20	29	24	20	18			

RC - Ceiling Cavity Reflectance

RW - Wall Reflectance

Cone of Light			
2	218	4.3	9.6
4	57.8	8.4	18.6
6	25.2	12.7	28.6
8	14.0	17.1	37.7
10	9.14	21.1	46.8
12	6.29	25.5	56.3

BEAM DIA. MEASURED AT 50% OF NADIR F.C.

2-OEC-LED-2000L-3000L-4000L-DIM10-MVOLT-35K-40K-50K-85(3000L)

TEST NO.: EL12271989

INPUT WATTS: 21.3

LUMENS: 3082

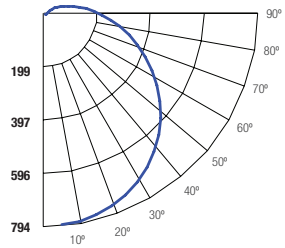
CRI: 85

EFFICACY: 145

CCT: 40K

SPACING CRITERIA: 1.40

Candle Power Distribution (Candelas)



Zonal Lumens Summary

Zone	Lumens	%Lamp	%Fixt
0-20	289.53	9.40	9.40
0-30	614.93	20.00	19.90
0-40	1010.05	32.80	32.80
0-60	1828.25	59.40	59.30
0-80	2446.38	79.40	79.40
0-90	2643.88	85.80	85.80

Luminance (Average candela/M²)

Angle in Degrees	Average 0°	Average 45°	Average 90°
45	11243	12047	13224
55	10502	12089	14006
65	9596	12781	15785
75	8303	15545	20684
85	6564	33013	47936

Lumens Per Zone

Zone	Lumens
0-10	74.98
10-20	214.55
20-30	325.40
30-40	395.12
40-50	418.82
50-60	399.37
60-70	345.79
70-80	272.34
80-90	197.50

Candela Tabulation

0	5	15	25	35	45	55	65	75	85	90
0	792.991	790.300	756.490	690.070	597.260	487.900	369.700	248.900	131.890	35.110
5	790.300	756.490	690.070	597.260	487.900	369.700	248.900	131.890	35.110	6.370
15	756.490	690.070	597.260	487.900	369.700	248.900	131.890	35.110	6.370	0
25	690.070	597.260	487.900	369.700	248.900	131.890	35.110	6.370	0	0
35	597.260	487.900	369.700	248.900	131.890	35.110	6.370	0	0	0
45	487.900	369.700	248.900	131.890	35.110	6.370	0	0	0	0
55	369.700	248.900	131.890	35.110	6.370	0	0	0	0	0
65	248.900	131.890	35.110	6.370	0	0	0	0	0	0
75	131.890	35.110	6.370	0	0	0	0	0	0	0
85	35.110	6.370	0	0	0	0	0	0	0	0
90	6.370	0	0	0	0	0	0	0	0	0

Coefficients of Utilization - Zonal Cavity Method

Effective Floor Cavity Reflectance 0.20

ROOM CAVITY RATIO	RC	80%				70%				50%				30%				10%				0%
		RW	70%	50%	30%	10%	70%	50%	30%	10%	50%	30%	10%	30%	10%	50%	30%	10%				
0	116	116	116	116	116	111	111	111	111	103	103	103	96	96	96	89	89	89	86			
1	103	97	92	88	88	99	94	89	85	87	83	80	80	77	75	75	72	70	67			
2	93	84	76	70	70	89	81	74	68	75	69	64	69	65	60	64	60	57	54			
3	84	73	64	57	57	81	70	62	56	65	58	53	61	55	50	56	52	48	45			
4	77	64	55	48	48	73	62	53	47	58	50	45	54	47	42	50	45	40	38			
5	71	57	48	41	41	67	55	46	40	51	44	38	48	42	37	45	39	35	32			
6	65	51	42	35	35	62	50	41	35	46	39	33	43	37	32	40	35	30	28			
7	60	46	37	31	31	58	45	36	30	42	35	29	39	33	28	37	31	27	25			
8	56	42	34	28	28	54	41	33	27	38	31	26	36	30	25	34	28	24	22			
9	52	39	30	25	25	50	37	30	24	35	28	23	33	27	23	31	26	22	20			
10	49	36	28	22	22	47	35	27	22	33	26	21	31	25	20	29	24	20	18			

RC - Ceiling Cavity Reflectance

RW - Wall Reflectance

Cone of Light			
2	274	4.4	9.5
4	72.8	8.6	18.4
6	31.7	13.0	27.9
8	17.7	17.5	37.3
10	11.5	21.5	46.3
12	7.93	26.1	55.7

BEAM DIA. MEASURED AT 50% OF NADIR F.C.

2-OEC-LED-2000L-3000L-4000L-DIM10-MVOLT-35K-40K-50K-85(4000L)

TEST NO.: EL12271998

INPUT WATTS: 31.6

LUMENS: 4373

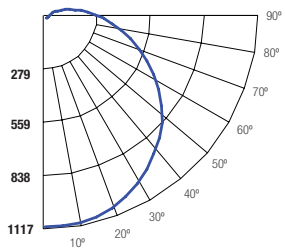
CRI: 85

EFFICACY: 138

CCT: 40K

SPACING CRITERIA: 1.40

Candle Power Distribution (Candelas)



Zonal Lumens Summary

Zone	Lumens	%Lamp	%Fixt
0-20	407.76	9.30	9.30
0-30	866.01	19.80	19.80
0-40	1424.44	32.60	32.60
0-60	2585.86	59.20	59.10
0-80	3465.35	79.30	79.20
0-90	3747.24	85.70	85.70

Luminance (Average candela/M²)

Angle in Degrees	Average 0°	Average 45°	Average 90°
45	15880	16984	18633
55	14851	17047	19729
65	13767	18030	22217
75	11894	22256	29116
85	9065	47250	68478



INTEGRATED SENSOR AND CONTROL OPTIONS

With the integration of controls, Elite Lighting now offers its products with controls-ready performance that increases energy efficiency, smarter space planning, and the enhancement of safety and productivity in the workplace. By utilizing these controls, Elite Lighting luminaires enable your customer's facility to run smarter, with the use of an easily controlled system through any platform.

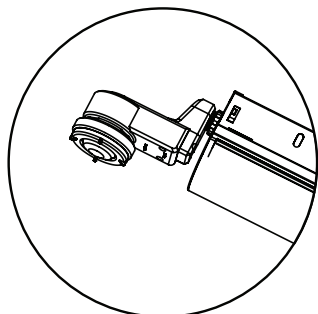
Luminaire will be shipped with Powerpacks pre-installed, ready to be integrated to designated control systems

Luminaire will be shipped with Sensors installed on the luminaire, allowing for individual luminaire control. Luminaires will be ready to be integrated with designated control systems

Luminaire will be shipped with Sensors to be remotely installed on the ceiling. Luminaires will be ready to be integrated with designated control systems

BRAND	
PIR INTEGRATED SENSOR	<input type="checkbox"/> FSP-311-B-D 0-10V continuous dimming PIR photo/motion sensor with bluetooth control option.

SIDE MOUNT



LEGRAND

FSP-311-B-D
 0-10V continuous dimming PIR photo/motion sensor with bluetooth control option.