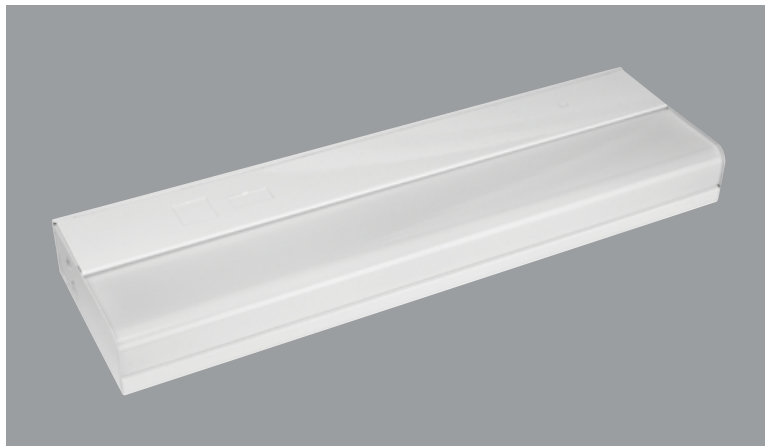
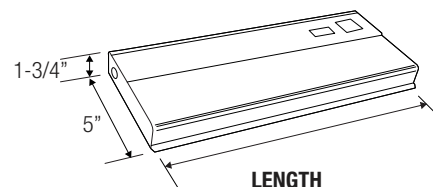




# EZU-LED SERIES



CALCULATED  
**L70**  
LIFETIME  
50,000 HRS



**LENGTH**  
EZU-24 = 24"  
EZU-48 = 48"

**APPLICATION:**

Suitable for retail displays, gondolas, coves and undercabinet applications.

**PRODUCT FEATURES:**

- Life tested to ensure light output up to 50,000 hours of operation to L70
- Tested to LM-79 and LM-80 standards
- Easy-fit cover channel attachment
- Tool-less wireway access
- Detachable channel cover for quick installation
- Romex/BX conduit connector included with every fixture
- Soft-lumens, linear prismatic diffuser gives better visual comfort

- Knockouts available at the back, side, and rear for easy installation
- Available keyhole mounting slots on the back finish

**FINISH:**

UV coated rust resistance. Painted parts finished with polyester powder coating. 22-gauge die-formed steel housing.

**PERFORMANCE** - The light engines found in the EU-LED are rated at 85+ CRI and are available in CCTs 4100K. Rated and tested to LM-79 and LM-80 standards. The LEDs are also binned to a 3-step MacAdam ellipses to achieve consistent color from fixture to fixture.

**QUALITY CONTROL** - Every fixture is turned on and rigorously tested by our QC Department before shipping.

**ELECTRICAL** - Powered by high-quality constant-current power LED drivers which are rated for 50 to 60Hz at 120-277V input, produce less than 20% THD, and have a power factor of .90 to 1.00.

**WARRANTY** - Limited 5 Year Warranty

**DIMMING** - The EZU-LED can be ordered with either a TRIAC or 0-10V compatible dimming system. Consult factory for more information.



**Example: EZU-LED-24-MVOLT-40K**

TYPE	LENGTH / WATT	DIMMING	COLOR OPTION	FINISH	ACCESSORIES
EZU-LED	<b>24</b> - (539L, 13W) <b>36</b> - (768L, 20W) <b>48</b> - (1078L, 26W)	<b>DIM10</b> - DIM10-MVOLT <b>TRIAC</b> - 120V only	<b>30K</b> - (3000K) <b>35K</b> - (3500K) <b>40K</b> - (4100K)	<b>WH</b> - White	<b>SW</b> - Rocker switch (120V only) <b>RC</b> - Grounded outlet (120V only)

# PHOTOMETRY DATA

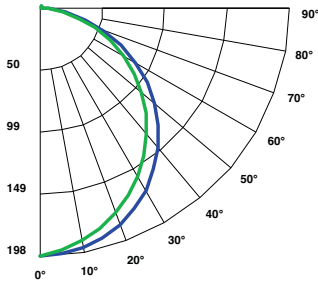
## EZU-LED-24-DIM10-MVOLT

WATTAGE: 13W

LUMENS: 539

TOTAL LUMINAIRE EFFICACY: 42

### Candle Power Distribution (Candelas)



### Spacing Criteria

0-180 : 1.26  
90-270 : 1.18  
Diagonal : 1.34

**EFFICACY: 42 LM/W**

### Zonal Lumens Summary

Zone	Lumens	%Lamp	%Fixt
0-30°	148.73	N.A.	27.60
0-40°	241.64	N.A.	44.80
0-60°	422.00	N.A.	78.30
0-90°	530.67	N.A.	98.40
0-180°	539.11	N.A.	100.00

### Luminance Data (cd/sq.m)

Angle In Degrees	Average 0°	Average 45°	Average 90°
45°	3350	2603	2444
55°	3167	2279	2115
65°	2852	1853	1699
75°	2283	1275	1151
85°	883	355	315

### Candela Tabulation

	0	45	90
0	198.142	198.142	198.142
5	197.280	194.650	193.810
15	190.250	184.260	182.220
25	176.800	167.990	165.370
35	157.340	146.750	143.850
45	132.880	121.440	118.900
55	103.580	93.000	91.190
65	70.580	62.480	61.620
75	36.630	32.630	32.600
85	6.050	5.930	6.150
90	0.520	0.870	0.950

### Coefficients of Utilization - Zonal Cavity Method

Effective Floor Cavity Reflectance 20% = PF

RC	RW	80%				70%				50%				30%				10%				0%			
		70%	50%	30%	10%	70%	50%	30%	10%	50%	30%	10%	50%	30%	10%	50%	30%	10%	50%	30%	10%	0%			
0	119	119	119	119	116	116	116	116	110	110	110	105	105	105	101	101	101	98							
1	109	104	100	96	106	101	98	94	97	94	91	93	90	88	89	87	85	83							
2	99	91	84	78	96	89	82	77	85	80	75	81	77	73	78	74	71	69							
3	90	80	71	65	87	78	70	64	75	68	63	72	66	62	69	64	60	58							
4	82	71	62	55	80	69	61	55	66	59	54	64	58	53	62	56	52	50							
5	76	63	54	47	74	62	53	47	60	52	46	57	51	46	55	50	45	43							
6	70	57	48	41	68	56	47	41	54	46	41	52	45	40	50	44	40	38							
7	65	51	43	37	63	51	42	36	49	41	36	47	41	36	46	40	35	33							
8	60	47	39	33	59	46	38	33	45	37	32	43	37	32	42	36	32	30							
9	57	43	35	29	55	42	35	29	41	34	29	40	33	29	39	33	29	27							
10	53	40	32	27	52	39	32	27	38	31	26	37	31	26	36	30	26	24							

RC - Ceiling Cavity Reflectance

RW - Wall Reflectance

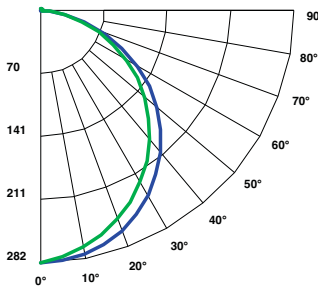
## EZU-LED-36-DIM10-MVOLT

WATTAGE: 20W

LUMENS: 768

TOTAL LUMINAIRE EFFICACY: 38

### Candle Power Distribution (Candelas)



### Spacing Criteria

0-180 : 1.26  
90-270 : 1.18  
Diagonal : 1.34

**EFFICACY: 38 LM/W**

### Zonal Lumens Summary

Zone	Lumens	%Lamp	%Fixt
0-30°	211.77	N.A.	27.60
0-40°	344.25	N.A.	44.80
0-60°	601.72	N.A.	78.30
0-90°	756.84	N.A.	98.50
0-180°	768.34	N.A.	100.00

### Luminance Data (cd/sq.m)

Angle In Degrees	Average 0°	Average 45°	Average 90°
45°	3215	2495	2336
55°	3057	2195	2030
65°	2773	1798	1644
75°	2193	1219	1104
85°	934	374	346

### Candela Tabulation

	0	45	90
0	281.870	281.870	281.870
5	280.674	276.906	275.635
15	270.699	262.046	259.504
25	251.501	239.126	235.855
35	223.867	209.076	205.747
45	188.824	173.274	170.470
55	147.277	132.964	131.311
65	100.246	89.655	89.473
75	50.485	45.896	46.917
85	8.590	9.097	10.140
90	0.735	1.186	1.345

### Coefficients of Utilization - Zonal Cavity Method

Effective Floor Cavity Reflectance 20% = PF

RC	RW	80%				70%				50%				30%				10%				0%			
		70%	50%	30%	10%	70%	50%	30%	10%	50%	30%	10%	50%	30%	10%	50%	30%	10%	50%	30%	10%	0%			
0	119	119	119	119	116	116	116	116	110	110	110	105	105	105	101	101	101	99							
1	109	104	100	96	106	101	98	94	97	94	91	93	90	88	89	87	85	83							
2	99	91	84	78	96	89	82	77	85	80	75	81	77	73	78	74	71	69							
3	90	80	71	65	87	78	70	64	75	68	63	72	66	62	69	64	60	58							
4	82	71	62	55	80	69	61	55	66	59	54	64	58	53	62	56	52	50							
5	76	63	54	47	74	62	53	47	60	52	46	57	51	46	55	50	45	43							
6	70	57	48	41	68	56	47	41	54	46	41	52	45	40	50	44	40	38							
7	65	51	43	37	63	51	42	36	49	41	36	47	41	36	46	40	35	33							
8	60	47	38	33	59	46	38	33	45	37	32	43	37	32	42	36	32	30							
9	57	43	35	29	55	42	35	29	41	34	29	40	33	29	39	33	29	27							
10	53	40	32	27	52	39	32	27	38	31	26	37	31	26	36	30	26	24							

RC - Ceiling Cavity Reflectance

RW - Wall Reflectance

LED EZU

LED Undercabinet Fixture