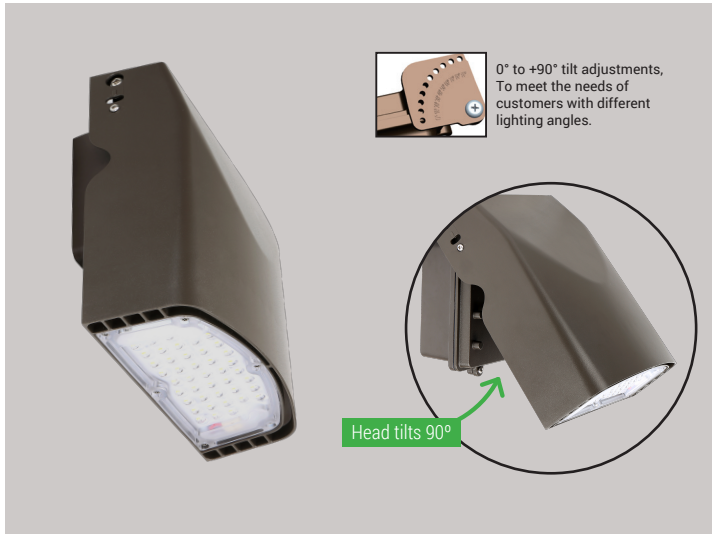


# OWP-FC-216-LED

LED Slimline Full Cut-Off Wall Pack Series

**up to 88 Wattage / up to 10000 Lumens**

<b>Catalog Number:</b>	
<b>Project Name:</b>	
<b>Note:</b>	<b>Type:</b>



**APPLICATIONS:**

Slim wall pack is available in two sizes for a variety of applications including building perimeter, entrances, stairways and security lighting. OWP series of luminaires provides a low-profile architectural style with the power of bright, energy efficient LEDs. It has a rugged aluminum construction with multi-mount capabilities. 0° to +90° tilt adjustments. For a building that has a modern or futuristic look.

**FEATURES:**

**Construction**

Sealed die-casting profile for outdoor applications. Suitable for applications requiring 3G testing prescribed by ANSI C136.31.

**Optics**

Light engines are available in standard 4000K and 5000 K (70 CRI) configurations. Scalable Lumen Packages from 8,500 to 10,000 Lumens. UV coated lens provide outstanding performance, uniformity and glare control.

**Electrical**

Standard drivers feature electronic universal voltage (120-277V 50/60Hz) operation. Greater than 0.9 power factor, less than 20% harmonic distortion, and is suitable for operation in -40°C to 40°C ambient environments.

**Lifespan**

Estimated 50,000-hour LED lifespan based on IES LM-80 results and TM-21 calculations.

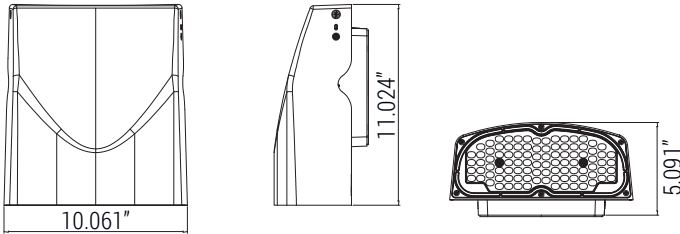
**Warranty**

Five-year warranty.

**Applications**

Security, pathway and perimeter lighting, Building entryways and walkways.

**DIMENSION:**



**SPECIFICATIONS:**

<b>LUMENS</b>	8500 / 10000 lumens
<b>WATTAGE</b>	68W / 88W
<b>CCT</b>	40K, 50K
<b>CRI</b>	70
<b>LIGHT EFFICIENCY</b>	128 lumens/watt
<b>VOLTAGE</b>	120-277 VAC
<b>POWER FREQUENCY</b>	50/60 Hz
<b>FINISH</b>	Bronze, Black, White
<b>APPLICABLE ENVIRONMENT</b>	Dry/Damp/Wet location
<b>WORKING TEMPERATURE</b>	-40°C to 45°C



Ordering Guide > Example: **OWP-FC-216-LED-10000L-MVOLT-40K-BZ**

<b>OWP-FC-216-LED</b>					
<b>SERIES</b>	<b>PERFORMANCE</b>	<b>VOLTAGE</b>	<b>CCT</b>	<b>FINISH</b>	<b>ACCESSORIES</b>
OWP-FC-216-LED	8500L - 8500 lumens 10000L - 10000 lumens	MVOLT - 120/277V	40K - 4000K 50K - 5000K	BZ - Bronze BK - Black WH - White	WPPHC - Photocell



Submittal form is available @ [www.oraclelighting.com](http://www.oraclelighting.com)  
Tel: 323-888-1973 • Fax: 323-888-1977

Specifications and Dimensions subject to change without notice.

# OWP-FC-216-LED

LED Slimline Full Cut-Off Wall Pack Series

## OWP-FC-216-LED-8500L-DIM10-MVOLT-40K-BZ

INPUT WATTS: **68.4**

LUMENS: **8927**

CRI: **N/A**

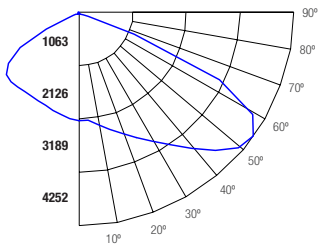
EFFICACY: **131**

CCT: **4000K**

TEST NO.: **EL08131976**

SPACING CRITERIA: **1.92**

### Candle Power Distribution (Candelas)



### Zonal Lumens Summary

Zone	Lumens	%Lamp	%Fixt
0-20	815.01	9.10	9.10
0-30	1857.89	20.80	20.80
0-40	3393.26	38.00	38.00
0-60	7540.26	84.50	84.50
0-80	8791.98	98.60	98.50
0-90	8820.8	98.90	98.80

### Luminance (Average candela/M<sup>2</sup>)

Angle in Degrees	Average		
	0°	45°	90°
45	60145	60156	50957
55	51355	78667	59935
65	8496	67229	33607
75	3816	9857	5421
85	2242	3752	3781

### Lumens Per Zone

Zone	Lumens
0-10	203.39
10-20	611.62
20-30	1042.88
30-40	1535.37
40-50	2053.15
50-60	2093.84
60-70	1072.06
70-80	179.66
80-90	28.82

### Candela Tabulation

0	
0	2128.688
5	2357.610
15	2706.960
25	3112.330
35	3622.270
45	3954.740
55	2739.120
65	333.880
75	91.850
85	18.170
90	3.600

### Coefficients of Utilization - Zonal Cavity Method

Effective Floor Cavity Reflectance 0.20

RC	RW	80%				70%				50%			30%			10%			0%
		70%	50%	30%	10%	70%	50%	30%	10%	50%	30%	10%	50%	30%	10%	50%	30%	10%	0%
0	119	119	119	119	116	116	116	116	111	111	111	106	106	106	101	101	101	99	
1	110	105	101	98	107	103	99	96	98	95	93	94	92	90	90	89	87	85	
2	100	92	85	80	97	90	84	79	86	81	77	83	78	75	79	76	73	71	
3	90	80	72	65	88	78	71	65	75	69	64	72	67	62	70	65	61	59	
4	82	70	61	55	80	69	60	54	66	59	53	64	57	52	61	56	52	49	
5	75	62	53	46	73	61	52	46	58	51	45	56	50	44	54	49	44	42	
6	69	55	46	39	67	54	45	39	52	44	39	50	43	38	49	42	38	36	
7	63	49	40	34	61	48	40	34	47	39	33	45	38	33	44	38	33	31	
8	58	45	36	30	57	44	35	30	42	35	29	41	34	29	40	33	29	27	
9	54	40	32	26	53	40	32	26	39	31	26	37	31	26	36	30	25	24	
10	51	37	29	23	49	36	29	23	35	28	23	34	28	23	33	27	23	21	

RC - Ceiling Cavity Reflectance

RW - Wall Reflectance

## OWP-FC-216-LED-10000L-DIM10-MVOLT-40K-BZ

INPUT WATTS: **88.2**

LUMENS: **10683**

CRI: **N/A**

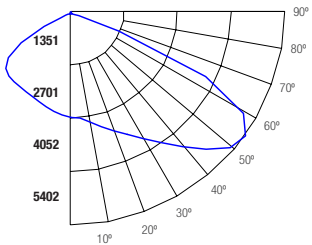
EFFICACY: **121**

CCT: **4000K**

TEST NO.: **EL08131977**

SPACING CRITERIA: **1.92**

### Candle Power Distribution (Candelas)



### Zonal Lumens Summary

Zone	Lumens	%Lamp	%Fixt
0-20	1007.02	9.40	9.40
0-30	2297.22	21.50	21.50
0-40	4206.31	39.40	39.40
0-60	9213.46	86.30	86.20
0-80	10520.2	98.50	98.50
0-90	10554.66	98.90	98.80

### Luminance (Average candela/M<sup>2</sup>)

Angle in Degrees	Average		
	0°	45°	90°
45	72990	74791	64967
55	48869	94720	75511
65	5607	61999	41358
75	3823	6677	6635
85	1436	3793	4870

### Lumens Per Zone

Zone	Lumens
0-10	251.31
10-20	755.71
20-30	1290.2
30-40	1909.09
40-50	2538.59
50-60	2468.56
60-70	1124.9
70-80	181.84
80-90	34.45

### Candela Tabulation

0	
0	2629.922
5	2891.610
15	3295.310
25	3814.100
35	4486.440
45	4799.390
55	2606.510
65	220.350
75	92.000
85	16.640
90	4.200

### Coefficients of Utilization - Zonal Cavity Method

Effective Floor Cavity Reflectance 0.20

RC	RW	80%				70%				50%			30%			10%			0%
		70%	50%	30%	10%	70%	50%	30%	10%	50%	30%	10%	50%	30%	10%	50%	30%	10%	0%
0	119	119	119	119	116	116	116	116	111	111	111	106	106	106	101	101	101	99	
1	110	105	102	98	107	103	100	96	99	96	93	95	92	90	91	89	87	85	
2	100	92	86	80	97	90	84	79	86	82	77	83	79	75	80	77	74	71	
3	91	81	73	66	88	79	72	66	76	70	64	73	68	63	70	66	62	60	
4	83	71	62	56	80	69	61	55	67	60	54	64	58	53	62	57	52	50	
5	76	63	54	47	73	61	53	47	59	52	46	57	51	45	55	49	45	43	
6	69	56	47	40	67	55	46	40	53	45	40	51	44	39	49	43	39	37	
7	64	50	41	35	62	49	41	35	47	40	34	46	39	34	44	38	34	32	
8	59	45	36	30	57	44	36	30	43	35	30	42	35	30	40	34	30	28	
9	55	41	33	27	53	40	32	27	39	32	27	38	31	26	37	31	26	24	
10	51	38	29	24	50	37	29	24	36	29	24	35	28	24	34	28	23	22	

RC - Ceiling Cavity Reflectance

RW - Wall Reflectance