

ST302



ST301



**APPLICATION:**  
Surface mount

**BODY:**  
High-grade die-cast aluminum with 0.3% copper to prevent corrosion in concrete applications

**FACE PLATE:**  
High-grade die-cast aluminum

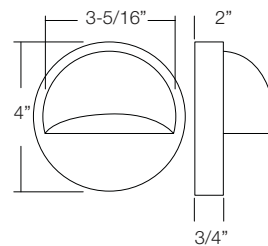
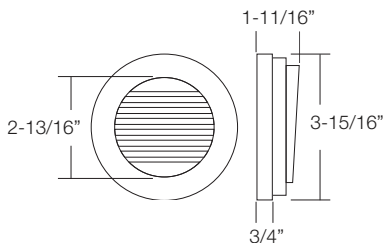
**GASKET:**  
Single-piece molded silicon for wet location

**LENS:**  
Frosted tempered glass

**EXTERNAL LOUVER:**  
Anodized 45° cut-off louver

**REFLECTOR:**  
High-performance aluminum reflector assembly for superb light output

**LISTING:**  
UL/C-UL for wet location



Ordering Guide > Example: ST302-LED-WW-WH

<b>ST302-LED-WW</b>		
<b>SERIES (WATTAGE/LAMP TYPE)</b>		<b>FINISH</b>
<b>LED</b>		<b>WH</b> - White
<b>ST302-LED-WW*</b>	- 3W LED 12V	<b>BK</b> - Black
<b>ST302-LED-CW*</b>	- 3W LED 12V	<b>BZ</b> - Bronze
		<b>VG</b> - Green

**\*MUST BE USED WITH REMOTE TRANSFORMER**

Ordering Guide > Example: ST301-LED-WW-WH

<b>ST301-LED-WW</b>		
<b>SERIES (WATTAGE/LAMP TYPE)</b>		<b>FINISH</b>
<b>LED</b>		<b>WH</b> - White
<b>ST301-LED-WW*</b>	- 3W LED 12V	<b>BK</b> - Black
<b>ST301-LED-CW*</b>	- 3W LED 12V	<b>BZ</b> - Bronze
		<b>VG</b> - Green

**\*MUST BE USED WITH REMOTE TRANSFORMER**