

Brian

alva®

ARCHITECTURAL SCALE, WET-LISTED OUTDOOR DECORATIVE ACCENT LIGHT



46.5" shown with "Down Light", Matte Black finish

TITLE
24

ADA
COMPLIANT

10YR
WARRANTY



APPLICATIONS

Decorative accent light for building facades. Designed to provide a gentle downward or up and downward light accent.

SHADE DIMENSIONS

- 7"W x 15.5"H x 4"D
- 7"W x 31"H x 4"D
- 7"W x 46.5"H x 4"D

WEIGHT

- 15.5"H - 6 lb
- 31"H - 8 lb
- 46.5"H - 12 lb

MOUNTING

- Steel mounting system with mounting plate and cover with rubber gaskets between the junction box and mounting plate. Mounts to center of J-box at 5.5" from top of rectangular shade

SPECIFICATIONS

- Dark Sky Compliant, Full cut-off (applies to "Down Light" version)
- High efficiency, fully integrated proprietary LED module
- IP66 Rated
- BUG Rating B1-U0-G0
- 120-277V input
- 100,000+ hours rated life time
- 10 Year Limited Warranty (excludes shade)
- Title 24 Compliant
- ADA Compliant

LAMPING

- 2700K, 3000K, 3500K, 4000K CCT
- MT1 (down light) 282 lumens delivered
- MT2 (down and up) 282 lumens down, 282 lumens up
- 33W

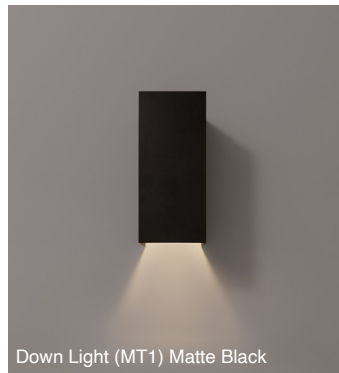
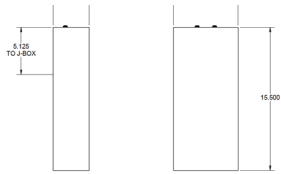
CONSTRUCTION

Manufactured from aluminum with industrial powder coat finish

Brian

ARCHITECTURAL SCALE, WET-LISTED OUTDOOR DECORATIVE ACCENT LIGHT

NO PANEL (15.5" H FIXTURE)

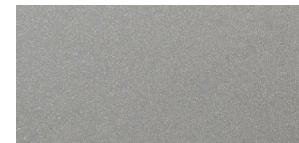


Down Light (MT1) Matte Black



Down/Up Light (MT2), Matte White

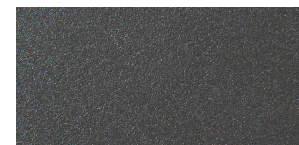
METAL POWDER COAT FINISH OPTIONS:



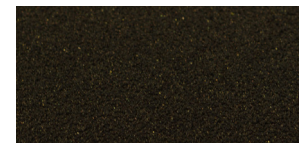
ESN - Enviro Satin Nickel



EOB - Enviro Oil-Rubbed Bronze



GR - Graphite



DBT - Dark Bronze

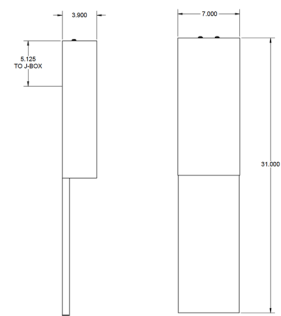


WHT - Matte White

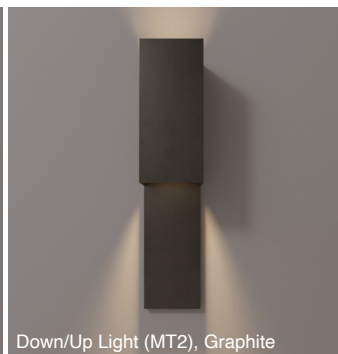


BLK - Matte Black

SHORT PANEL (15.5" H PANEL, 31" H FIXTURE)

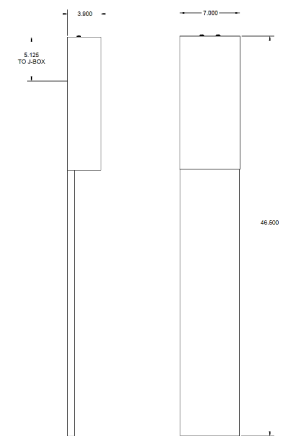


Down Light (MT1), Graphite



Down/Up Light (MT2), Graphite

LONG PANEL (31" H PANEL, 46.5" H FIXTURE)



Down Light (MT1)
Enviro Oil-Rubbed Bronze



Down/Up Light (MT2)
Enviro Oil-Rubbed Bronze

ORDER CODE:

MODEL	LENGTH	CCT	SHADE LIGHT	METAL TRIM
BRIAN				
	15 15.5"	2700 2700K	MT1 Down Light Only	ESN Enviro Satin Nickel
	31 31"	3000 3000K	MT2 Down and Up Light	EOB Enviro Oil-Rubbed Bronze
	46 46.5"	3500 3500K		GR Graphite
		4000 4000K		DBT Dark Bronze
				WHT White
				BLK Black