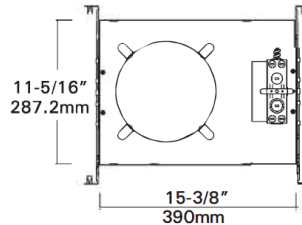


M910/MCLR9-DOB

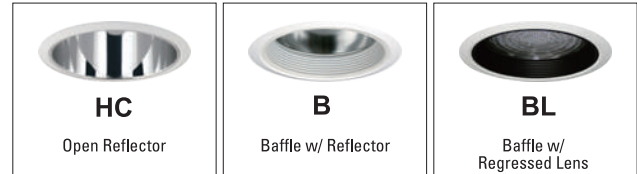
9" NON-IC, Architectural LED Retrofit downlight

15W, 20W, 30W & 40W LED, 120V ~ 277V Input

Catalog		Type
Project		Date
Prepared		



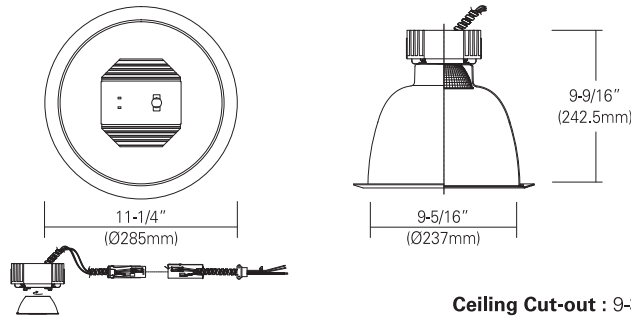
9" Architectural LED



* All trims are rated for damp location, and regressed lens trims are for wet location listed.
* Wide beam reflector is standard. Also available in other beam in reflector.(consult with factory)

Ceiling Cut-out : 9-3/4"

LINE DRAWING



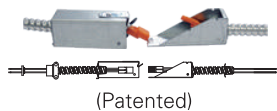
Ceiling Cut-out : 9-3/4"

DESCRIPTION

The 9" Architectural grade LED Recessed Downlight Retrofit Trim Module with Clear Cone reflector. Designed for use with existing Ilung 9" Architectural Incandescent, Fluorescent and Metal Halide Housing. Also, compatible with most 9" architectural housings measuring at least 8-5/16" high, with aperture between 9-1/2" ~ 10" (See Housing Compatibility section).

Provided

- Easy-quick connector case.



ORDERING INFORMATION

Housing	Module	Watts	CRI	CCT	Beam Angle	Trim	Reflector Finish	Baffle Finish	Optional Metal Trim Ring Finish
M910 6" Non-IC Housing	MCLR9-DOB Architectural LED downlight with AC direct DOB	15 15W 20 20W 30 30W 35 35W 40 40W	8 80 9 90	27 2700K 30 3000K 40 4000K 50 5000K	N Narrow M Medium W Wide	HC B BL	HC Haze Clear WH White	WH White BK Black	WH White BK Black
*Option - EM=Emergency battery backup							*Consult with factory for custom finishes		

Example : M910/MCLR9-DOB-40-830-W



FEATURES and FUNCTIONS

- Heavy gauge aluminum reflector anodized in clear, haze, gold, champagne and pewter color finish.
- Aluminum extruded Heat sink designed to facilitate heat dissipation.
- Designed for use with most existing 9-1/2" ~ 10" aperture architectural incandescent, fluorescent and metal halide housings.
- Beam optic changeable with easy twist-on lock.
- Easy-quick metal connector case supplied allowing easy and sturdier wire connector. (USA patented)
- 120~277V AC LED module with perfect dimming of Triac and 0-10V on one module.

Listing

- CSA-us Certified
- State of california Title 24
- Energy star Approved & Listed
- Damp location

Warranty

- 5years of lamp life.

Example : HC-WH

