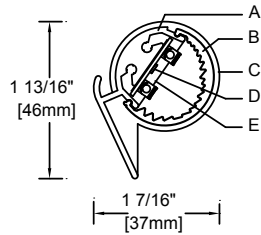
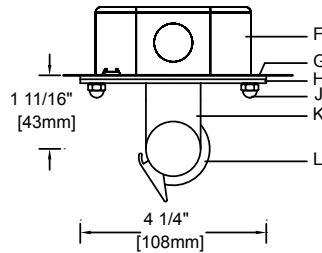


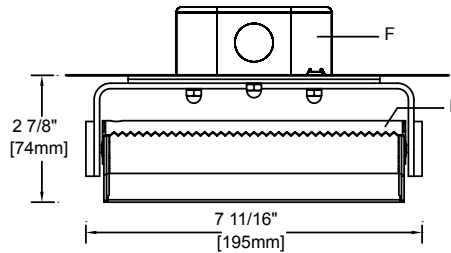
**Optical Assembly** 1:2 Scale



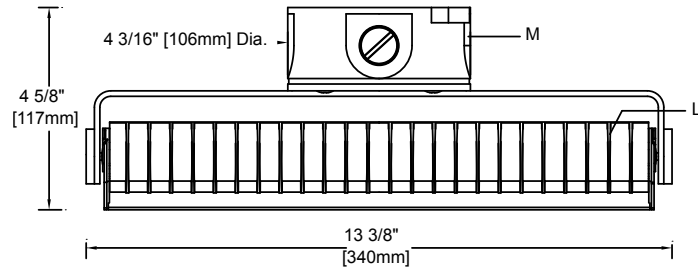
**E-Mount** 1:4 Scale



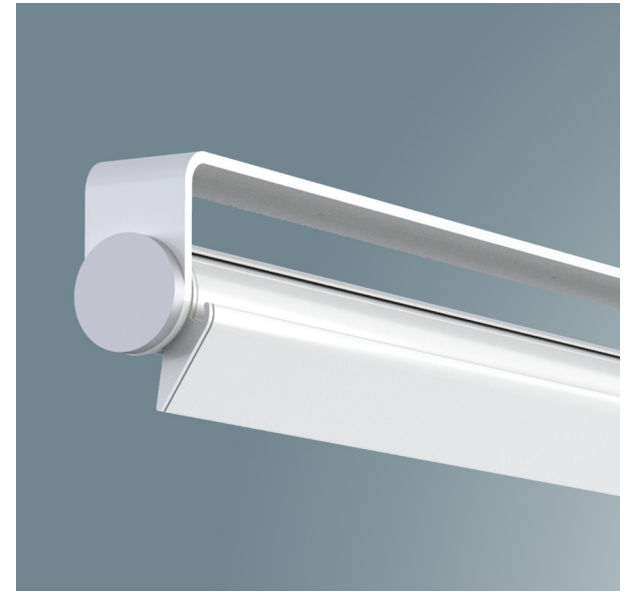
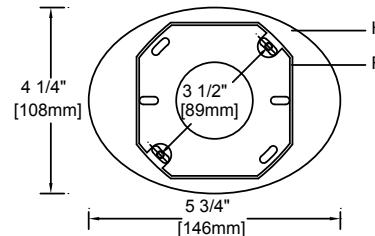
**Front View (28-LED)** 1:4 Scale



**S-Mount with Round Junction Box and Baffle (56-LED)** 1:4 Scale



**E-Mount Oval Mounting Plate** 1:4 Scale



**Specifications**

- |  |   |  |   |
|--|---|--|---|
| <b>A</b> Extruded aluminum heat sink housing | <b>D</b> Linear LED PCB with mid-power LEDs | <b>G</b> Oval mounting plate (E-mount) | <b>M</b> Round surface junction box (S-mount) |
| <b>B</b> Extruded semi-diffuse lens          | <b>E</b> Clear silicone encapsulant         | <b>H</b> Oval canopy (E-mount)         | <b>N</b> Optional sawtooth shield             |
| <b>C</b> Die Cast aluminum end plate         | <b>F</b> Recessed junction box (by others)  | <b>J</b> Stainless steel acorn nuts    |   |
|  |   | <b>K</b> Formed aluminum yoke          |   |
|  |   | <b>L</b> Optical cross baffle          |   |

**Features**

- Inconspicuous low profile - lights entire wall evenly without emphasizing surface imperfections
- Built in visor provides shielding of glare from below
- Surface or cantilever mounting upwards or down
- Optional baffle or sawtooth shielding options



**Optic Assembly:**

Extruded aluminum heat sink/optic housing. Exterior heat sink anodized for maximum emissivity. Precision extruded polymer refractive lens with optimal dispersion.

**Finish:**

Extruded aluminum heat sink/housing, aluminum reveal plates and end plates finished white, black or custom color. Painted surfaces 6-stage pretreatment and electrostatically applied thermoset polyester powder coating for a durable abrasion, fade and corrosion resistant finish. All hardware stainless steel.

**Mounting:**

E-mount formed aluminum yoke with flat canopy mounts over recessed outlet box (by others). S-mount formed aluminum yoke with flat canopy and round outdoor surface box for direct feed from sides or rear. X-mount formed aluminum yoke mounts to pendant or cantilever accessory (ordered separately).

Fixture weight: 28 LED unit = 1.5 lbs (0.68 kg); 56 LED unit = 2.0 lbs (0.91 kg)

**Electrical:**

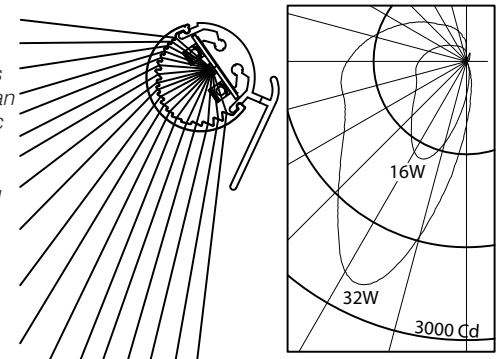
Luminaire furnished with 10 foot (3048mm) of low voltage cable for connection to remote driver. Electronic HPF thermally protected Class II driver mounted in weather-proof enclosure or optional indoor dry enclosure. For complete driver specifications, see website, reference document [MA-1303](#).

**Standard:**

CSA certified for wet locations  
Dual rated IP66 and IP67  
5 year warranty  
Maximum ambient temperature 45°C (113°F).

**Performance**

Precisely extruded acrylic lens produces an asymmetric distribution ideal for illuminating vertical surfaces evenly from top to bottom.



For LM79 and photometric reports, visit [thelightingquotient.com](http://thelightingquotient.com)

L90(10k) > 60,000 hrs.  
@ 25°C per TM-21



To form a Catalog Number

S 1 5 0 | | | | | | | | | | | | |

1 2 3 4 5 6 7 8 9

Project: \_\_\_\_\_ Type: \_\_\_\_\_

1 Source

S150 = Xtra small fluted yoke mount LED with remote driver

2 Length / Light Output / Power

ORDER CODE	LENGTH	LUMENS	INPUT WATTS	NUMBER OF LEDS	DRIVE CURRENT
L028	8"	890	8W	28	175mA
M028	8"	1722	16W	28	350mA
L056	14"	1781	16W	56	175mA
M056	14"	3444	32W	56	350mA

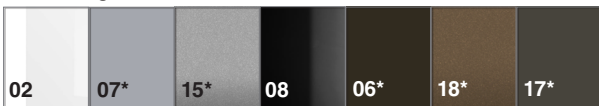
Based on 3500K/80+ CRI. [Click here](#) for scaled performance table.

3 Mounting

- E = Yoke with flat canopy over recessed junction box by others.
- S = Yoke with flat canopy and round surface splice box for direct feed.
- X = Yoke mounted for use with pendant or cantilever accessory.

4 Finish

- 02 = Semigloss white
- 06 = Dark bronze\*
- 07 = Silver\*
- 08 = Semigloss black
- 15 = Metallic
- 17 = Champagne\* consult sales rep.\*
- 18 = Copper\*
- 99 = Custom or RAL,



\* = non-cancellable/returnable

5 Voltage

Electronic Driver

- M = 120-277V Universal voltage input
- K = 347V input

6 Option

- 00 = No options
- 0D = Remote indoor driver for dry location
- 0B = Cross baffle, provides 25° lateral shielding
- 0S = Backsplash shield (adjustable)
- BD = Cross baffle with remote indoor driver
- SD = Backsplash shield with remote indoor driver

7 Destination Requirement

- 0 = CSA certified for U.S.
- J = CSA certified for Canada

8 Color Temperature / CRI

- 830 = 3000K, 80+ CRI
- 835 = 3500K, 80+ CRI
- 840 = 4000K, 80+ CRI

Note: Additional CCT and CRI options are available; consult factory.

RGBW - Consult factory.



9 Dimming\*\*

- 00 = Non-dimming
- TD = ERP forward phase or reverse phase (120V only), dimming range 100-10% power, compatible controls by others
- ZX = 0-10V analog dimming 120-277V input, dimming range 100%-5%, 0-10V controls by others
- EL = eldoLED SOLOdrive 120-277V input, dimming range 100%-0.1%, 0-10V controls by others.
- ED = eldoLED SOLOdrive 120-277V input, dimming range 100%-0.1%, DALI controls by others.

\*\*Dimming range refers to % power input, % light output will vary. Refer to Driver Information document [MA-1303](#)

Example

S150-M028-S-02-M-00-0-835-ZX

S150 Xtra-small yoke with flat canopy and round junction box for direct feed. 8" long, 28 LEDs, 350mA driver, finish semi-gloss white, 120-277V electronic dimming driver in weatherproof enclosure dims to 1% on 0-10V controls by others or to 10% on Triac or ELV controls by others, CSA certified for U.S., 3500K, 80+CRI.

Required Mounting Hangers (X mount)

Required ACJ or ASP mounting hangers for X mount cantilever or slipfitter fixtures are ordered and priced separately. See installation sheets on website.

