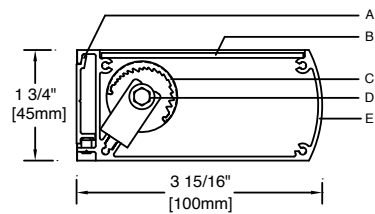
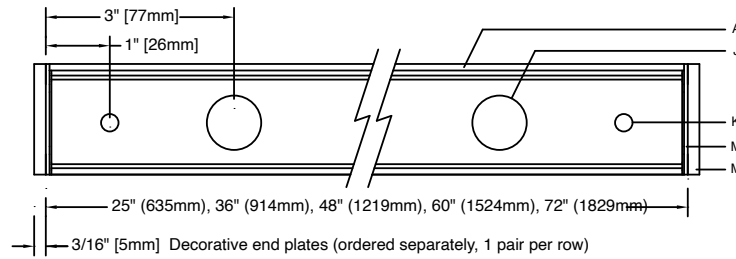


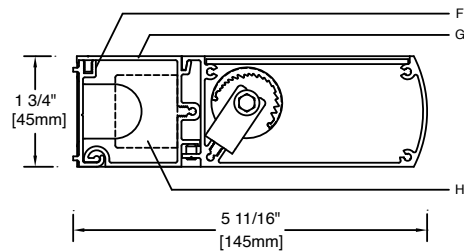
S416 Remote Driver 1:3 Scale
(ADA Compliant)



S417 Integral Driver Rear View 1:3 Scale



S417 Integral Driver 1:3 Scale

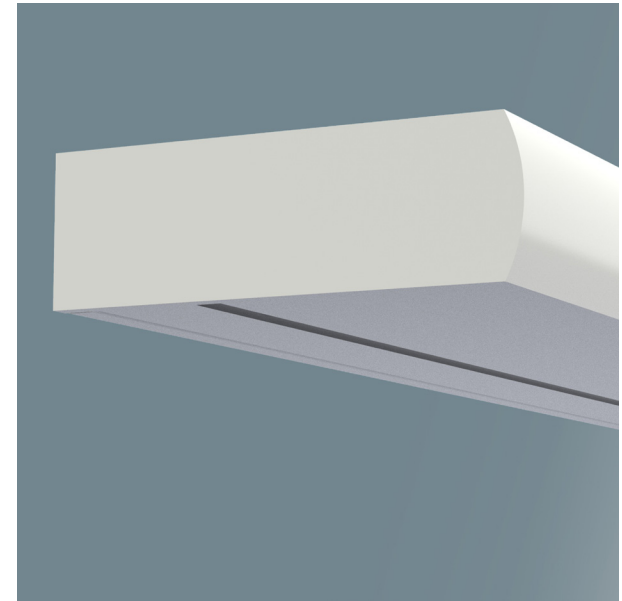
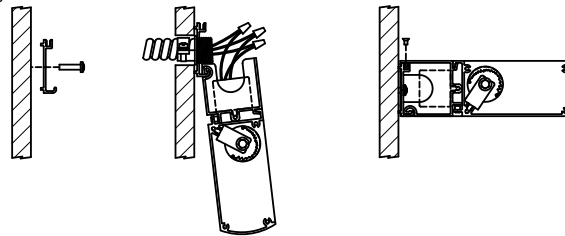


Installation

Secure mounting plate to ceiling, fasteners by others

Hang housing, connect supply wiring

Hinge closed, secure with screws



Specifications

- A** Extruded aluminum mounting plate
- B** Optional top lens
- C** Extruded asymmetric lens
- D** Stainless steel spring washers and bolts
- E** Extruded aluminum housing
- F** Extruded aluminum mounting plate w/ hinge
- G** Extruded aluminum raceway/driver enclosure
- H** Electronic LED driver
- J** 7/8" dia. knock-outs (1 each end)
- K** 9/32" Dia. mounting holes
- L** Stamped aluminum reveal plate
- M** Stamped aluminum end plates (ordered separately)

Housing and Optic Assembly:

Extruded aluminum housing. Internal extruded aluminum heat sink is anodized for maximum emissivity. Precision extruded polymer refractive lens with optimal diffusion.

Finish:

Extruded aluminum heat sink/housing bright anodized, white or black finish. Formed aluminum canopy, adjustable back bracket, end plates finished white, black or anodized. Painted surfaces – 6 stage pretreatment and electrostatically applied thermoset polyester powder coating for a durable abrasion, fade and corrosion resistant finish. All hardware – stainless steel or nickel plated brass.

Mounting:

Mounting plate provided with 9/32" (7mm) diameter mounting holes. Mounting plate fastens to wall (fasteners by others). Luminaire hooks onto wall plate and is secured with fasteners provided. When mounting in continuous rows, leave 1/8" gap between wall plates.

Electrical:

Style S416 remote driver units are furnished with 7 foot (2438mm) leads for connection to remote driver Class II output. Remote electronic HPF thermally protected Class II driver mounted in aluminum enclosure.

Style S417 integral driver units are provided with (2) 7/8" knock outs for supply connection.

For complete driver specifications, see website, reference document [MA-1303](#). Optional electronic dimming driver; compatible dimming controls (by others). See website for dimming compatibility and specifications.

Standard:

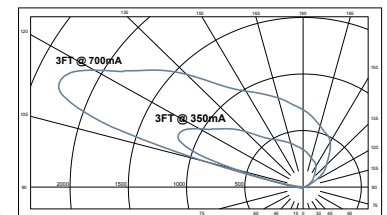
CSA certified for dry locations. 5 year warranty, maximum ambient temperature 45°C (113°F).

Features

- Self-contained wall mounted luminaire - no need to build a cove
- Adjustable and lockable asymmetric upright
- ADA compliant - remote driver style S416 only
- Individually mounted or in continuous rows
- Optional through wiring harness with quick connectors

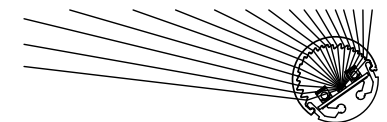
Performance

Precisely extruded acrylic lens produces an asymmetric distribution ideal for illuminating ceiling surfaces evenly.



For LM79 and photometric reports, visit thelightingquotient.com

L90(10k) > 60,000 hrs. @ 25°C per TM-21



To form a Catalog Number



Project: _____

Type: _____

1 Style

- S416** = XtraSmall Wall Mounted Linear LED Asymmetric Uplight with **Remote** Driver
- S417** = XtraSmall Wall Mounted Linear LED Asymmetric Uplight with **Integral** Driver

2 Length / Light Output / Power

ORDER CODE	LENGTH	LUMENS	INPUT WATTS	NUMBER OF LEDS	DRIVE CURRENT
R02G	2FT	543	7	72	175mA
R02L	2FT	1065	13	72	350mA
R02M	2FT	2064	27	72	700mA
R03G	3FT	815	10	108	175mA
R03L	3FT	1597	20	108	350mA
R03M	3FT	3096	40	108	700mA
R04G	4FT	1086	13	144	175mA
R04L	4FT	2130	27	144	350mA
R04M	4FT	4128	53	144	700mA
R05G	5FT	1358	17	180	175mA
R05L	5FT	2662	33	180	350mA
R05M	5FT	5160	67	180	700mA
R06G	6FT	1630	20	216	175mA
R06L	6FT	3194	40	216	350mA
R06M	6FT	6192	80	216	700mA

Based on 3500K/80+ CRI. [Click here](#) for scaled performance table.

3 Enclosure Style

- A** = Rectangular with crescent front

4 Finish

- 02** = Semigloss white
- 13** = Matte Black
- 22** = Matte White
- 06** = Dark bronze*
- 15** = Metallic
- PL** = Platinum
- 07** = Silver*
- 17** = Champagne*
- 99** = Custom or RAL, consult rep.*
- 08** = Semigloss black
- 18** = Copper*



* = non-cancellable/returnable

5 Voltage

- M** = 120-277V Universal voltage input
- K** = 347V input

6 Option

- 00** = No options
- 0M** = MRI option (style **S416** remote only)
- 0K** = Modular through-wire harness with quick connectors (style **S417** integral only)
- 0T** = Lay in top acrylic lens
- TK** = Lay in top lens and through wire harness (**S417** only)

7 Destination Requirement

- 0** = UL listed or CSA certified for U.S.
- J** = UL listed or CSA certified for Canada

8 Color Temperature / CRI

- 827** = 2700K, 80+ CRI
- 927** = 2700K, 90+ CRI
- 830** = 3000K, 80+ CRI
- 930** = 3000K, 90+ CRI
- 835** = 3500K, 80+ CRI
- 935** = 3500K, 90+ CRI
- 840** = 4000K, 80+ CRI
- 940** = 4000K, 90+ CRI

Note: Additional CCT and CRI options are available; consult factory.

Tunable White or RGBW - Consult factory.



9 Dimming**

- 00** = Non-dimming
- TD** = ERP forward phase or reverse phase (120V only), dimming range 100-10% power, compatible controls by others
- ZX** = 0-10V analog dimming 120-277V input, dimming range 100%-1%, 0-10V controls by others
- L2** = Lutron LTE 120V input, dimming range 100%-1% Two-wire dimming controls by others.
- EL** = eldoLED SOLOdrive 0-10V analog dimming, dimming range 100%-0.1%, 0-10V controls by others.
- ED** = eldoLED SOLOdrive, DALI dimming, dimming range 100%-0.1%, DALI controls by others.

**Dimming range refers to % power input, % light output will vary.

Refer to Driver Information document [MA-1303](#)

Example

S417-R06L-S-02-M-0K-0-835-ZX

S417 XtraSmall wall mounted linear LED uplight with integral driver and crescent front housing, 6ft (1830mm) long, driven at 350mA, semi-gloss white finish, 120-277V electronic dimming driver dims to 1%, 0-10V dimming controls by others, clear lens, UL listed or CSA certified for dry location, 3500K, 80+CRI.

elliptipar from The Lighting Quotient

114 Boston Post Road, West Haven, Connecticut 06516, USA
Voice 203.931.4455 • Fax 203.931.4464 • thelightingquotient.com

Required End Plates

- ADE** _____
- 0** = Decorative end plates (pair), one pair required for each individual fixture or row.
- Specify** finish to match housing finish
- AR** = Decorative end plates for Style S416 (remote driver housing)
- AN** = Decorative end plates for Style S417 (integral driver housing)

