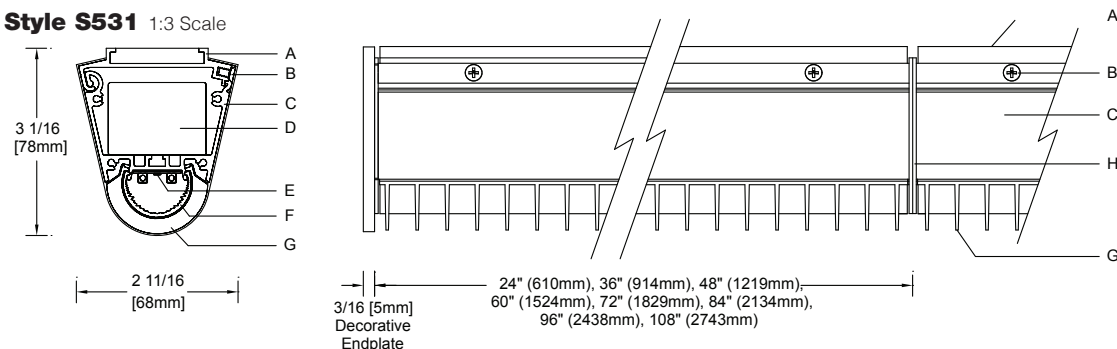
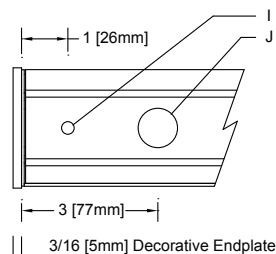
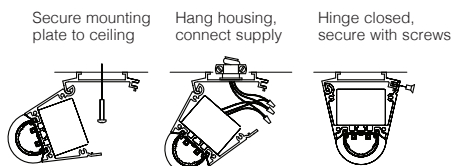
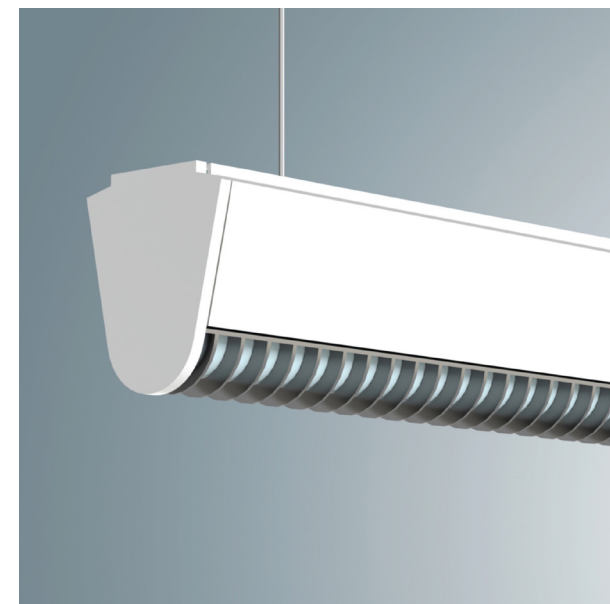
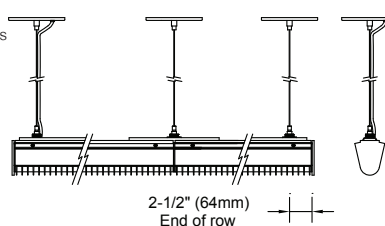


Style S531 1:3 Scale

Top View 1:4 Scale, S Mount

Surface Mount 1:2 Scale

Cable Mount 1:16 Scale

Specifications

- | | | | |
|---|---|--|---|
| A Extruded aluminum mounting plate | D High efficiency constant current electronic driver | G Polycarbonate cross baffle | J Knockout, (2) 7/8" (22mm) diameter |
| B Closure screws | E LED light engine | H Aluminum reveal plate | |
| C Extruded aluminum housing | F Bi-Asymmetric optic | I Mounting hole, (3) 9/32" (7mm) diameter | |

Finish:

Painted surfaces - 6 stage pretreatment and electrostatically applied thermoset powder coat for stable, long lasting and corrosion resistant finish. Extruded aluminum mounting plate, housing, aluminum reveal plates. Reflector and internal end plates - extruded high purity aluminum with clear anodized finish. All luminaire hardware - stainless steel. All mounting hardware - zinc or cadmium plated.

Optic Assembly:

Precision extruded semi-diffuse polycarbonate bi-asymmetric optic illuminates two opposing vertical surfaces uniformly. Multiple mid-power LEDs are tightly spaced to minimize pixellation. Molded polycarbonate cross baffle with light gray matte finish provides 25° sheilding of lens brightness.

Mounting:

S mount - mounting plate fastens flush to ceiling. Unit hinges on plate for hands-free access to wiring.

X mount - cables or pendant stems **ordered separately**

Pendant stem - 11/16" O.D. aluminum, internally threaded. 5" dia. aluminum canopy. Cable - 1/16" dia. 7x7 aircraft cable, field adjustable length. Crossbar with 1/4-20 stud and 5" dia.

canopy. For shelf supported bridge or cantilever, consult factory.

Electrical:

Use 90°C wire for supply connections. Integral electronic HPF thermally protected Class II driver. Driver/wireway compartment includes one conduit entry at each end. Channel cover removes for access to driver and wiring. Luminaires may be butted end-to-end for through wiring. Optional #12 AWG prewired modular through wiring with quick connectors. Optional ; compatible dimming controls (by others). See website for dimming compatibility and specifications, reference document [MA-1303](#).

Standard:

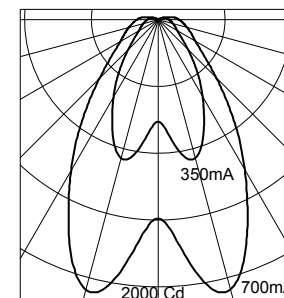
CSA certified for dry location.
Maximum ambient temperature 45°C (113°F).

Features

- Compact size with integral driver
- Bi-asymmetric distribution - evenly light both sides of aisle


Performance

Precisely extruded acrylic lens produces a bi-asymmetric distribution ideal for illuminating both vertical surfaces in grocery aisles, library stack aisles, archives or computer server farms.



L90(10k) > 60,000 hrs.
@ 25°C per TM-21

For complete photometrics, visit thelightingquotient.com



To form a Catalog Number

S 5 3 1 - R - - - - B - - - -
1 2 3 4 5 6 7 8 9

1 Style

S531 = Solid state (LED) Aisle Light, integral driver

2 Length / Light Output / Power

ORDER CODE	LENGTH	LUMENS	INPUT WATTS	NUMBER OF LEDS	DRIVE CURRENT
R02G	2FT	693	7	72	175mA
R02L	2FT	1359	14	72	350mA
R02M	2FT	2634	27	72	700mA
R03G	3FT	1040	10	108	175mA
R03L	3FT	2038	20	108	350mA
R03M	3FT	3951	41	108	700mA
R04G	4FT	1386	14	144	175mA
R04L	4FT	2718	27	144	350mA
R04M	4FT	5268	54	144	700mA
R05G	5FT	1733	17	180	175mA
R05L	5FT	3397	34	180	350mA
R05M	5FT	6585	68	180	700mA
R06G	6FT	2080	20	216	175mA
R06L	6FT	4076	41	216	350mA
R06M	6FT	7902	81	216	700mA
R07G	7FT	2426	24	252	175mA
R07L	7FT	4756	47	252	350mA
R07M	7FT	9218	95	252	700mA
R08G	8FT	2773	27	288	175mA
R08L	8FT	5435	54	288	350mA
R08M	8FT	10535	108	288	700mA
R09G	9FT	3119	30	324	175mA
R09L	9FT	6114	61	324	350mA
R09M	9FT	11852	122	324	700mA

Based on 3500K/80+CRI. [Click here](#) for scaled performance table.

3 Mounting

S = Ceiling (surface) mount

X = For use with required pendant stem, cable or cantilever hangers — ordered and priced separately, see at right. For shelf-supported bridge or cantilever, consult factory.

Note: Both S and X mount fixtures require ADE51 end kits, ordered and priced separately.

4 Finish

02 = Semigloss white 13 = Matte Black 22 = Matte White
06 = Dark bronze* 15 = Metallic PL = Platinum
07 = Silver* 17 = Champagne* 99 = Custom or RAL, consult rep.*
08 = Semigloss black 18 = Copper*

02	22*	PL*	07*	15*
08	13*	06*	18*	17*

* = non-cancellable/returnable

Project: _____

Type: _____

5 Voltage

M = 120-277V Universal voltage input

K = 347V input

6 Option (See Accessories Section for specifications)

0B = Cross Baffle (25° shielding)

BK = Baffle with Modular Pre-wired Harness

7 Destination Requirement Standard

0 = CSA certified for U.S.

J = CSA certified for Canada

8 Color Temperature / CRI

827 = 2700K, 80+ CRI

927 = 2700K, 90+ CRI

830 = 3000K, 80+ CRI

930 = 3000K, 90+ CRI

835 = 3500K, 80+ CRI

935 = 3500K, 90+ CRI

840 = 4000K, 80+ CRI

940 = 4000K, 90+ CRI

Note: Additional CCT and CRI options are available; consult factory.

Tunable White or RGBW - Consult factory.



9 Dimming** (dimming controls by others)

00 = Non-dimming

TD = ERP forward phase or reverse phase (120V only), dimming range 100-10% power, compatible controls by others

ZX = 0-10V analog dimming 120-277V input, dimming range 100%-1%, 0-10V controls by others

EL = eldoLED SOLOdrive 120-277V input, dimming range 100%-0.1%, 0-10V controls by others.

ED = eldoLED SOLOdrive 120-277V input, dimming range 100%-0.1%, DALI controls by others.

L2 = Lutron Hi-lume LTE 120V input only, dimming range 100%-1%, compatible 2-wire dimming controls by others

**Dimming range refers to % power input, % light output will vary.

Refer to Driver Information document [MA-1303](#)

Example

S531-R08G-S-02-M-0B-0-835-ZX

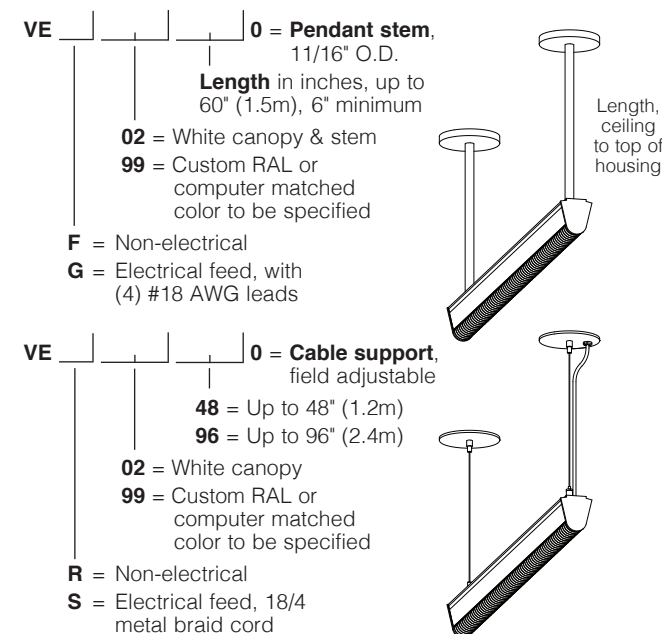
S531 small linear LED Bi-Asymmetric luminaire, 8 foot (2743mm) long, driven at 175mA, surface mounted, semi-gloss white finish, 120-277V dims to 1%, 0-10V dimming controls by others, CSA certified for dry location, 3500K, 80+CRI.

elliptipar from The Lighting Quotient

114 Boston Post Road, West Haven, Connecticut 06516, USA
Voice 203.931.4455 • Fax 203.931.4464 • [thelightingquotient.com](#)

Required Mounting Hangers (X Mount)

Ordered and priced separately. See accessories section for specifics. **Singles** – order one non-electrical and one electrical feed hanger for each module (X mount). **Rows** – order one non-electrical hanger for each module (X mount) plus one electrical feed for each row. Note: For each single or row with dimming (voltage/ballast code T or V), order one additional electrical feed and subtract one non-electrical hanger. **Electrical feed(s)** must be located at an end of row. **VEF, VEG, VER, or VES required for X mount S530.**



Required End Plates (all fixtures)

ADE51 0 = Decorative end plates, one kit required for each row or single unit, adds 3/16\"/>

Accessories

ALD-00-0 = Accessory Lutron Dimming Interface. Lutron TVI-LMF-2A EcoSystem to 0-10V Interface provides a control gateway from an EcoSystem link to a 0-10V driver. Controls up to 2amps of load. [click here for chart.](#)

Certain products illustrated may be covered by applicable patents and patents pending. These specifications supersede all prior publications and are subject to change without notice. Copyright © 2021 Sylvan R. Shemitz Designs, LLC, all rights reserved.

