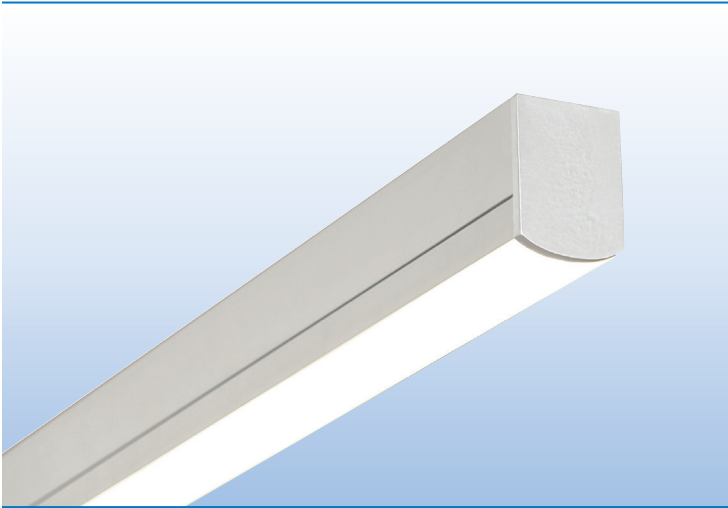
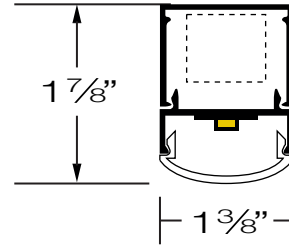


## LINEAR CABLE SUSPENDED / SURFACE MOUNT



PROJECT:
TYPE:



### SPECIFICATIONS

<b>HOUSING</b>	Extruded aluminum housing up to 12' long. Continuous runs available.
<b>FINISH</b>	Satin anodized or white paint finish standard. Custom finish optional.
<b>LENS</b>	Extruded DR acrylic, snap-on frosted widespread lens.
<b>LED DRIVER</b>	Integral, universal voltage; 0-10V dimming standard; 1% or 10% dimming.
<b>MOUNTING</b>	<b>SURFACE MOUNT:</b> Mounting holes pre-drilled. See page 2 for details. <b>CABLE SUSPENDED:</b> Aircraft cable suspension kit (SK), canopy and prewired with 18/5 SVT cord.
<b>LED's</b>	60,000 hours. (L70), High uniformity, 80 CRI
<b>CERTIFICATION</b>	ETL/CSA listed for damp locations.  2001431  MADE IN THE USA

### LED COLOR & LUMEN OPTIONS

4' – 24" BOARDS		LUMENS PER FOOT – WATTS PER FOOT – LUMENS PER WATT								
LED COLOR	CRI	LOW			MEDIUM			HIGH		
WHITE 2700K	80	500 L/FT	3.5 W/FT	136 L/W	870 L/FT	6.5 W/FT	130 L/W	1160 L/FT	9.0 W/FT	127 L/W
WHITE 3000K	80	530 L/FT	3.5 W/FT	144 L/W	915 L/FT	6.5 W/FT	137 L/W	1220 L/FT	9.0 W/FT	133 L/W
WHITE 3500K	80	535 L/FT	3.5 W/FT	144 L/W	920 L/FT	6.5 W/FT	137 L/W	1225 L/FT	9.0 W/FT	133 L/W
WHITE 4000K	80	560 L/FT	3.5 W/FT	151 L/W	970 L/FT	6.5 W/FT	145 L/W	1290 L/FT	9.0 W/FT	140 L/W

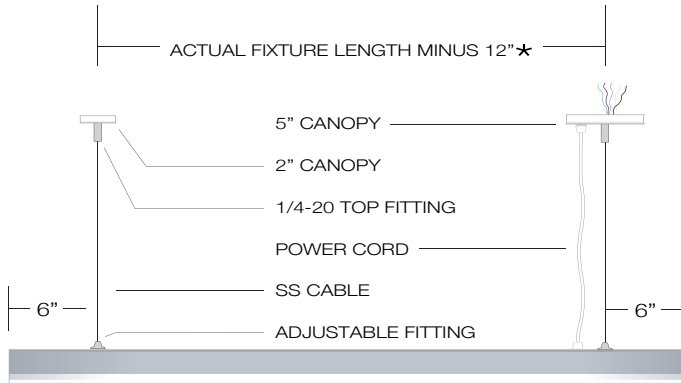
Higher lumen packages available.

### PART NUMBER

SERIES	LUMENS	COLOR	VOLTS	MOUNTING	ENDCAP STYLE	FINISH	LENGTH
LN1-FRL	L LOW	27K 2700K	UNV	<u>CABLE SUSPENDED</u>	<u>STANDARD ENDCAP</u>	S SATIN	2' 8"
	M MEDIUM	3K 3000K	(120/277)	SK36 36" CABLE KIT	SEB BLANK ENDS	W WHITE	3' 9"
	H HIGH	35K 3500K	10% DIM	SK48 48" CABLE KIT	SEK ONE END K/O	C CUSTOM	4' 10"
	CP CUSTOM PROGRAMMED (Specify Lumens/FT or Watts/FT)	4K 4000K	UNV 1%	SK72 72" CABLE KIT	SBEK BOTH ENDS K/O		5' 11"
			(120/277)	<u>SURFACE MOUNT</u>	<u>ARCHITECTURAL ENDCAP</u>		6' 12"
			1% DIM	SM SURF. MOUNT	AEB BLANK ENDS		7'
				JBP J BOX PLATE			
				WB WALL BRACKET			
				AM ADJ. MOUNT			

## MOUNTING

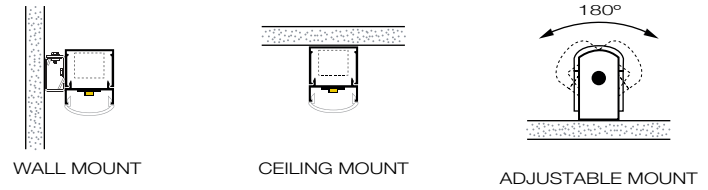
### CABLE SUSPENDED



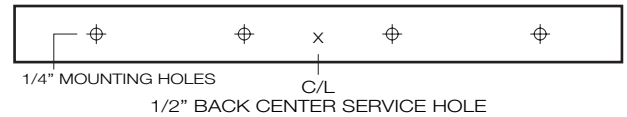
- SK36** 36" Suspension Kit
- SK48** 48" Suspension Kit
- SK72** 72" Suspension Kit
- Other cable lengths available.
- Suspension Kit includes:
  - (2) Top Fittings for 1/4-20 Rod
  - (2) Adjustable Bottom Fittings
  - (2) Aircraft Cables
  - (1) Prewired 18/5 White SVT Cord
  - (1) 5" White Canopy with Mounting Hardware
  - (1) 2" White Canopy

- \*Custom pendant spacing available; consult factory
- \*Lengths over 8' require center cable support
- \*EM option includes 18/6 cord

### SURFACE MOUNT

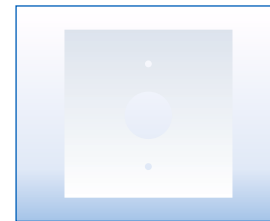


#### MOUNTING DETAILS



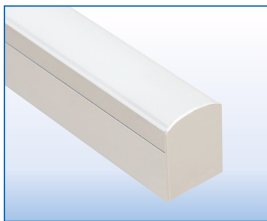
- 1/4" Mounting holes provided evenly spaced on back channel.
- 1/2" Back center service hole for snap-in connector provided for surface mount applications when using standard blank endcap or architectural endcap.
- 2' fixtures require off center service hole due to 12" driver

Note: Narrow housing will not cover recessed J Box. Whip feed recommended. Use optional "JBP" canopy plate for J-Box mount. (See Picture Below)

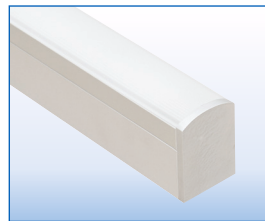


**J-BOX PLATE**  
**JBP** 5" FLAT CANOPY PLATE  
 TO COVER J-BOX

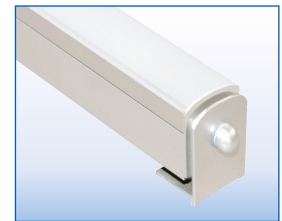
## ENDCAP STYLES



**STANDARD ENDCAP**  
**K/O OPTIONS**  
**SEB** BLANK ENDS  
**SEK** ONE END K/O  
**SBEK** BOTH END K/O



**ARCHITECTURAL ENDCAP**  
**AEB** BLANK ENDS  
 3/16" PLATE ENDCAP  
 1/2" BACK SERVICE HOLE

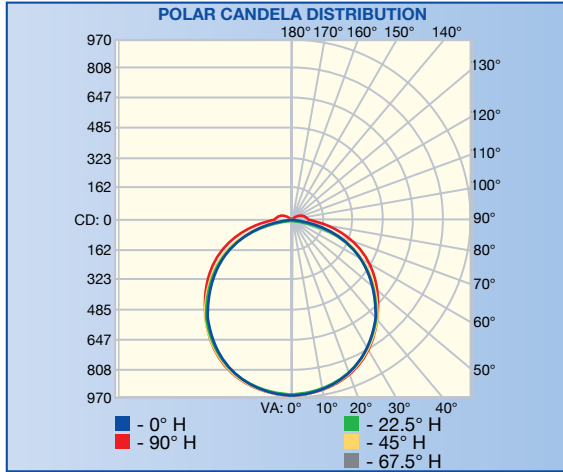


**ADJUSTABLE MOUNT**  
**AM** ADJUSTABLE END  
 BRACKETS  
 3' CORD STANDARD

## FIXTURE LENGTHS

NOMINAL LENGTH	2'	3'	4'	5'	6'	7'	8'	9'	10'	11'	12'
ACTUAL LENGTH	23"	34"	49"	56"	73"	89"	97"	111"	121"	133"	145"

PHOTOMETRICS / CANDELA DISTRIBUTION .IES files available online or by calling the factory.



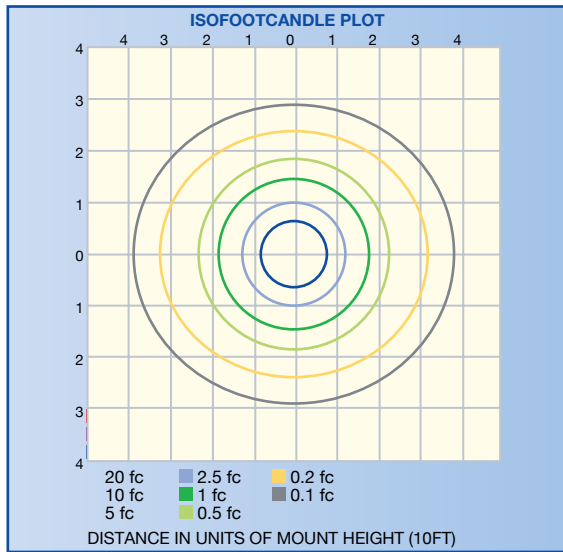
**LN1 – FRL FLAT ROUND LENS**

**POLAR GRAPH**

REPORT NO.: 103499092LAX-003

Based on 4' linear fixture at medium lumens (35K 903L/FT x 4' = 3612L)

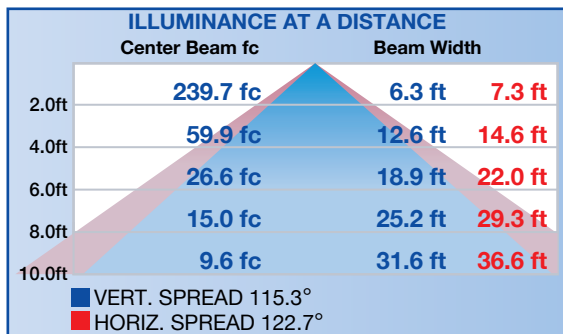
**ISOILLUMINATION PLOT**



**ZONAL LUMENS & PERCENTAGES AT 25°C**

ZONE	LUMENS	% LUMINAIRE
0-10	90.8	2.9
10-20	260.6	8.2
20-30	397.5	12.6
30-40	484.8	15.3
40-50	513.7	16.2
50-60	482.1	15.2
60-70	394.7	12.5
70-80	269.7	8.5
80-90	134.4	4.2
90-100	57.6	1.8
100-110	39.0	1.2
110-120	23.4	0.7
120-130	10.2	0.3
130-140	3.3	0.1
140-150	0.4	0.0

**ILLUMINANCE – CONE OF LIGHT**



**ZONAL LUMEN SUMMARY & PERCENTAGES AT 25°C**

ZONE	LUMENS	% LUMINAIRE
0-30	748.9	23.7
0-40	1234	39.0
0-60	2230	70.5
60-90	798.8	25.3
0-90	3028	95.8
90-180	134.0	4.2
0-180	3162	100.0