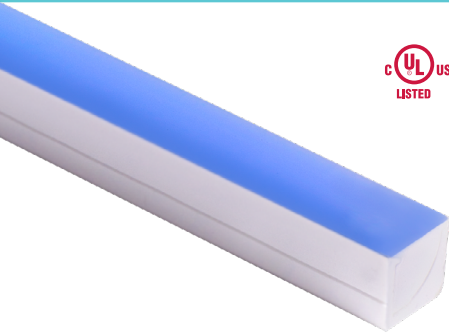


KURV-RGBW-HE

Q-CAP Flexible Fixtures



KURV-RGBW-HE is a fully encapsulated flexible linear LED fixture suitable for any application that requires color and white light used within the same LED. KURV has a built-in parabolic curve, which allows the fixture to disperse asymmetrical light with its internal reflector. Its dry and wet rating is perfect for indoor use and outdoor accent lighting where the fixture is visible. KURV-RGBW-HE encapsulates our 24-volt dynamic color RGBW high efficacy LED strips in polyurethane. It is offered in standard output with colors including red, green, blue, and white light with color temperatures of 2700K, 3000K, 3500K, 4000K. Available in a clear finish, where diodes are visible, or a translucent finish, where light is diffused.

Output [Calculated L70 = 40000 hours] Tested for KURV-RGBW-HE-WSC-DRY

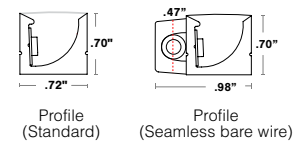
SO Standard Output [3W/ft]

CCT	Lumen/ft	Wavelength	ENC/CL	Lumen/ft	Wavelength	Circuit Wattage
Red	33	630	ENC/TL	25	629	0.77
Green	108	519		78	519	1.2
Blue	27	466		20	464	1.1

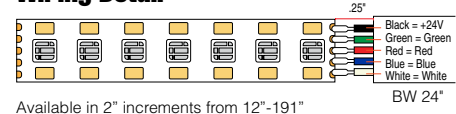
SO Standard Output [1W/ft]

CCT	Lumen/ft	CRI	ENC/CL	Lumen/ft	CRI	Circuit Wattage
2700K	57	98	ENC/TL	48	97	0.86
3000K	61	97		44	96	0.86
3500K	68	96		55	97	0.86
4000K	65	95		57	96	0.86

Dimensions



Wiring Detail

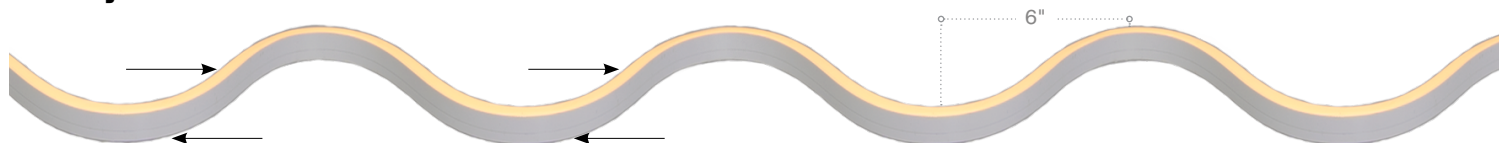


Part Number Builder

Product	Mounting	Rated	CCT	Output	Lens	Type	Connector/ Wire in	Connector/ Wire out	End Caps (No feed)	Length (in)
KURV- RGBW-HE				SO			BW			
Voltage: 24 VDC Wattage: 4.0W/ft										
*White snug clip included with side graze channel ENCAPSULATED PRODUCTS ARE NOT FIELD CUTTABLE										
WSC RLC MC SGC PPS-2 PPS-96 PPS-FT PPS-LP-2 PPS-LP-96 PPS-LP-FT		DRY (IP20) WET (IP67)	RGBW - 27 RGBW - 30 RGBW - 35 RGBW - 40	SO	ENC/CL ENC/TL	Single (Closed exit) S1 S2 S3 S4 S5 S6 Pass through P1 P2 P3 P4 P5 P6	BW	N/A	CL WH	12"-191" Consult factory for lengths under 12".

- **BW** comes in standard 24"- request custom length (Max 120") by writing it in inches next to "BW" in the order code box (ex. BW48)
- **Connector/Wire In or Out** not needed to specify product. Standard configuration is type S1, Connector/Wire In: BW & Connector/Wire Out: N/A with white endcaps (WH)
- **PPS** mounting clip recommended for seamless applications

Flexibility



- 5 year warranty
- Field modifications are not covered under Q-Tran warranty
- Side Bend
- IK10 impact rated
- Data subject to change, all data has +/- 5% tolerance
- **PPS-FT** is to be cut at Q-Tran to requested length

KURV-RGBW-HE

Q-CAP Flexible Fixtures



Mounting

NOTE: 2 white snug clips provided per first 12", 1 for each additional 12". Other mounting styles incur additional charge, see price guide for details.

WSC	RLC	MC	SGC	PPS-2	PPS-96	PPS-FT	PPS-LP-2	PPS-LP-96	PPS-LP-FT
White snug clip	Rigid lock channel	Magnetic clip (Cove use only)	Side graze channel	PVC mounting clip	PVC mounting clip	PVC channel Custom length	Low profile PVC mounting clip	Low profile PVC channel	Low profile PVC channel Custom length

Type

SINGLE (Input only)

S1	S2	S3	S4	S5	S6
				Seamless	Seamless

PASS THROUGH (Input/Output)

P1	P2	P3	P4	P5	P6
				Seamless	Seamless

End Caps (No Feed)

CL
Clear endcaps .0" added at end .00" dim spot

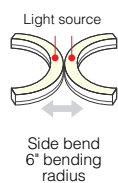
WH
White endcaps .0" added at end .10" dim spot

End Caps (With Feed)

End Feed
S1, P1
White endcaps .0" added at end .10" dim spot

Tri-Directional
S2, S3, S4, P2, P3, P4
White endcaps .32" added at end .67" dim spot

Bend Radius



Seamless

Shown with bare wire, connectors vary



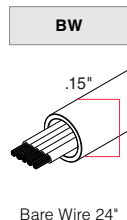
Compatible Accessories

See website for additional accessories options

Q-ANGLE



Connector/Wire – In/Out



Bare Wire 24"

Lens with LED visibility

ENC/CL	ENC/TL
Encapsulated in clear	Encapsulated in translucent

Compatible Power Supplies

See website for additional power supply options

QTM-eLED+DMX	QOM-eLED+DMX	QTM-DRIVE	QOM-DRIVE