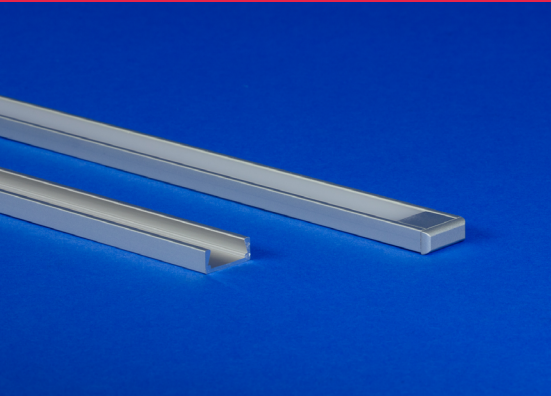


# SLIM

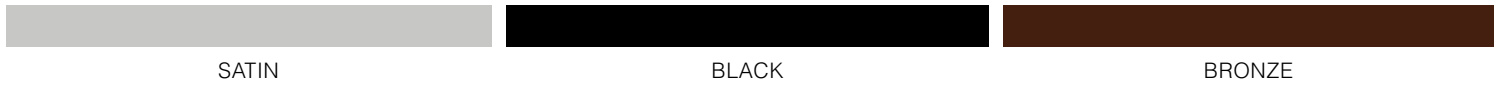
## ALUMINUM EXTRUSION



The SLIM LED extrusion is Q-Tran's smallest extrusion, making it a perfect fit for surface mount applications that require light to be low-profile. With a diffused lens, SLIM will provide near diode-free results at full power.

Our wet-rated LEDs can be applied to SLIM without a lens, while dry and damp LEDs fit (up to 5.0-watt/foot) with a lens.

### Finish

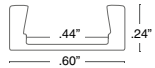


SATIN

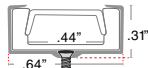
BLACK

BRONZE

### Dimensions



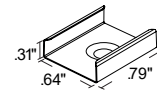
Profile



Profile with stainless steel mounting clip

### Mounting

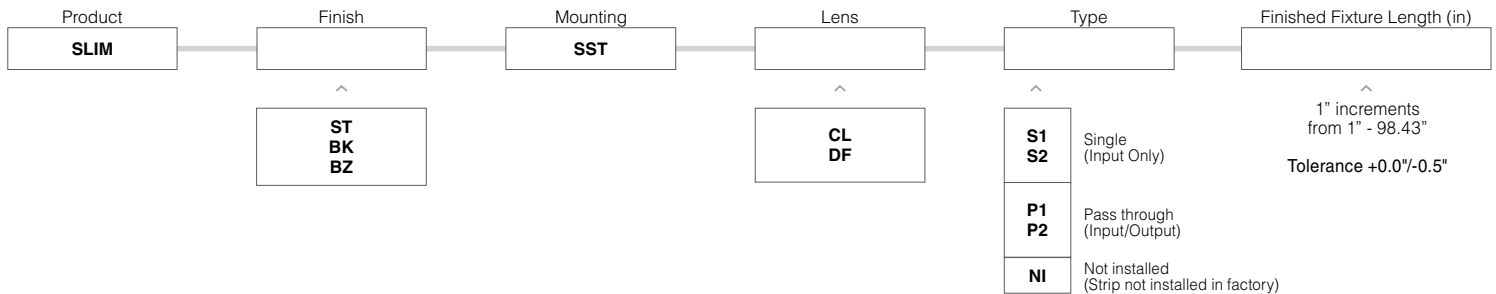
2 clips provided for 4' or less; 4 clips provided for greater than 4'



Stainless steel clip

Black clip standard with black extrusion

### Part Number Builder



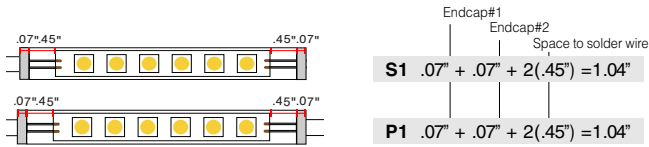
- Field modifications must comply with Q-Tran's installation methods otherwise warranty is null & void
- Suitable for installation in the storage area of a clothes closet when assembled as a fixture at Q-Tran facility (Not applicable for encapsulation or LED strips exceeding 4W/ft)
- UL Listed when assembled with STRIP LEDs at Q-Tran
- Wet rated tape only compatible with no lens
- Surface mount



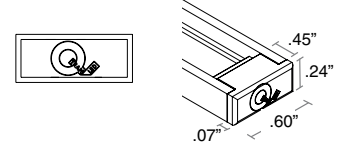
### Compatible Strips

	STATIC WHITE (SW)	STATIC WHITE INDIVIDUALLY ADDRESSABLE (SW-IA)	STATIC WHITE STOCKING DISTRIBUTOR (SD-SW)	STATIC WHITE HIGH EFFICACY (SW-HE)	STATIC WHITE HIGH EFFICACY PLUS (SW-HE+)	DYNAMIC WHITE (DW)	DYNAMIC WHITE HIGH EFFICACY (DW-HE)	STATIC COLOR (SC)	WARM DIM (WD)	RGB	RGBW	RGBW HIGH EFFICACY (RGBW-HE)
	1.5W/ft 3.0W/ft 4.0W/ft 5.0W/ft 6.0W/ft	5.0W/ft	2.0W/ft 4.0W/ft 6.0W/ft	1.5W/ft 3.0W/ft 6.0W/ft 9.0W/ft	3.0W/ft 6.0W/ft	6.0W/ft	3.0W/ft 5.0W/ft 8.0W/ft	5.0W/ft	6.0W/ft	6.0W/ft	6.0W/ft	4.0W/ft 8.0W/ft
<b>DRY</b>	✓ <small>Not compatible with 6.0</small>	✓	✓		✓	✓	✓ <small>Not compatible with 8.0</small>	✓	✓	✓		✓ <small>Not compatible with 8.0</small>
<b>DMP</b>	✓ <small>Not compatible with 6.0</small>					✓	✓ <small>Not compatible with 8.0</small>	✓		✓		✓ <small>Not compatible with 8.0</small>
<b>ENC</b>												
<b>WET</b>	✓ <small>No lens Not compatible with 6.0</small>		✓ <small>Not compatible with 6.0</small>					✓ <small>No lens</small>				

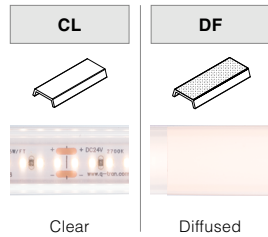
### Length (in) Add to nominal LED length for fixture length



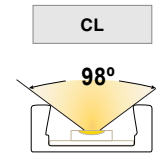
### End Caps



### Lens with LED visibility



### Cut Off



### Type

SINGLE (Input only)

PASS THROUGH (Input/Output)

