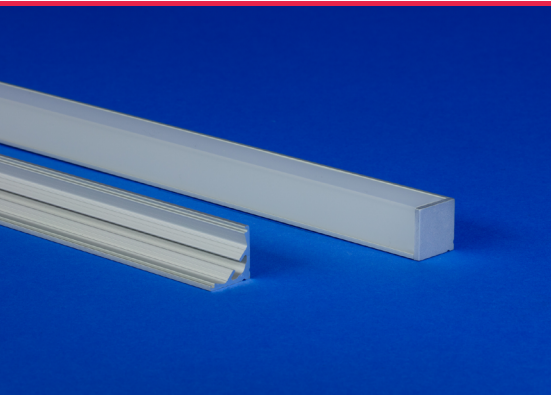


# TELA

## ALUMINUM EXTRUSION

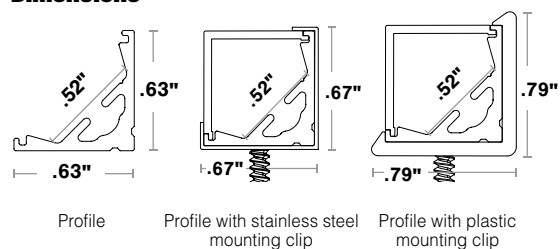


TELA is a 45-degree angled LED extrusion with a 90-degree two-sided lens that provides diode free viewing and sharp cutoff angles. Available in satin, black, and bronze finishes, the TELA extrusion is perfect for under-cabinet applications preventing the light from spilling past the edge of the countertop. Two mounting hardware options and three lens options, including frosted, polar, and diffused, allow for flexibility. Combine TELA with WhiteOptics to increase light output between 3-15%.

### Finish

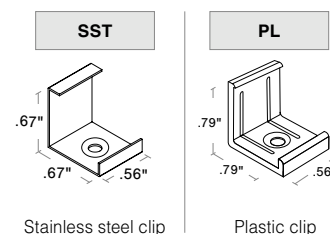


### Dimensions



### Mounting

2 clips provided for 4' or less; 4 clips provided for greater than 4'



### Part Number Builder

Product	Finish	Mounting	Lens	Type	Finished Fixture Length (in)
TELA TELA-WO	ST BK BZ	SST PL	FR DF	<div>S1 Single (Input Only)</div> <div>P1 Pass through (Input/Output)</div> <div>NI Not installed</div>	<div>1" increments from 1" - 98.43"</div> <div>Tolerance +0.0"/-0.5"</div>

- If selecting WhiteOptics option, select **TELA-WO** for Product

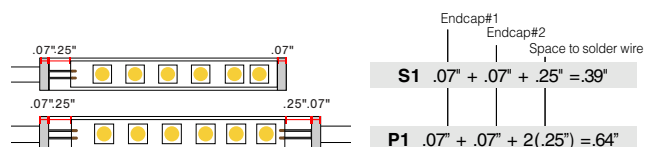
- Field modifications must comply with Q-Tran's installation methods otherwise warranty is null & void
- UL Listed when assembled with STRIP LEDs at Q-Tran
- Corner/surface mount
- Suitable for installation in the storage area of a clothes closet when assembled as a fixture at Q-Tran facility (Not applicable for encapsulation or LED strips exceeding 4W/ft)



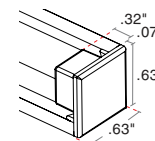
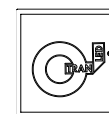
## Compatible Strips

	STATIC WHITE (SW)	STATIC WHITE INDIVIDUALLY ADDRESSABLE (SW-IA)	STATIC WHITE STOCKING DISTRIBUTOR (SD-SW)	STATIC WHITE HIGH EFFICACY (SW-HE)	STATIC WHITE HIGH EFFICACY PLUS (SW-HE+)	DYNAMIC WHITE (DW)	DYNAMIC WHITE HIGH EFFICACY (DW-HE)	STATIC COLOR (SC)	WARM DIM (WD)	RGB	RGBW	RGBW HIGH EFFICACY (RGBW-HE)
	1.5W/ft 3.0W/ft 4.0W/ft 5.0W/ft 6.0W/ft	5.0W/ft	2.0W/ft 4.0W/ft 6.0W/ft	1.5W/ft 3.0W/ft 6.0W/ft 9.0W/ft	3.0W/ft 6.0W/ft	6.0W/ft	3.0W/ft 5.0W/ft 8.0W/ft	5.0W/ft	6.0W/ft	6.0W/ft	6.0W/ft	4.0W/ft 8.0W/ft
DRY	✓	✓	✓	✓ <small>Not compatible with 9.0</small>	✓	✓	✓ <small>Not compatible with 8.0</small>	✓	✓	✓	✓	✓ <small>Not compatible with 8.0</small>
DMP	✓ <small>Not compatible with 6.0</small>			✓ <small>Not compatible with 9.0</small>		✓	✓ <small>Not compatible with 6.0</small>	✓		✓	✓	✓ <small>Not compatible with 8.0</small>
ENC												
WET	✓ <small>Not compatible with 6.0</small>		✓ <small>Not compatible with 6.0</small>		✓	✓	✓ <small>Not compatible with 8.0</small>	✓	✓	✓		✓ <small>Not compatible with 8.0</small>

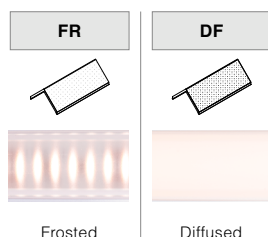
## Length (in) Add to nominal LED length for fixture length



## End Caps



## Lens with LED visibility



## WhiteOptics Photometrics

[Calculated L70(6k) - 70000 hours]  
Tested with SW24/5.0-DRY-30

	TELA LM/FT		TELA-WO LM/FT		TELA-WO Lumen Increase	
	Satin	Black/Bronze	Satin	Black/Bronze	Satin	Black/Bronze
Frosted	408	391	420	414	3%	6%
Diffused	359	327	380	377	6%	15%

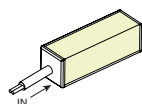
## Type

SINGLE (Input only)

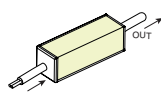
PASS THROUGH (Input/Output)

**S1**

**P1**



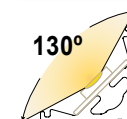
End feed



End feed

## Cut Off

**CL**



## Wire Way

