

PIVOT

TRACK - SURFACE

LUMENWERX

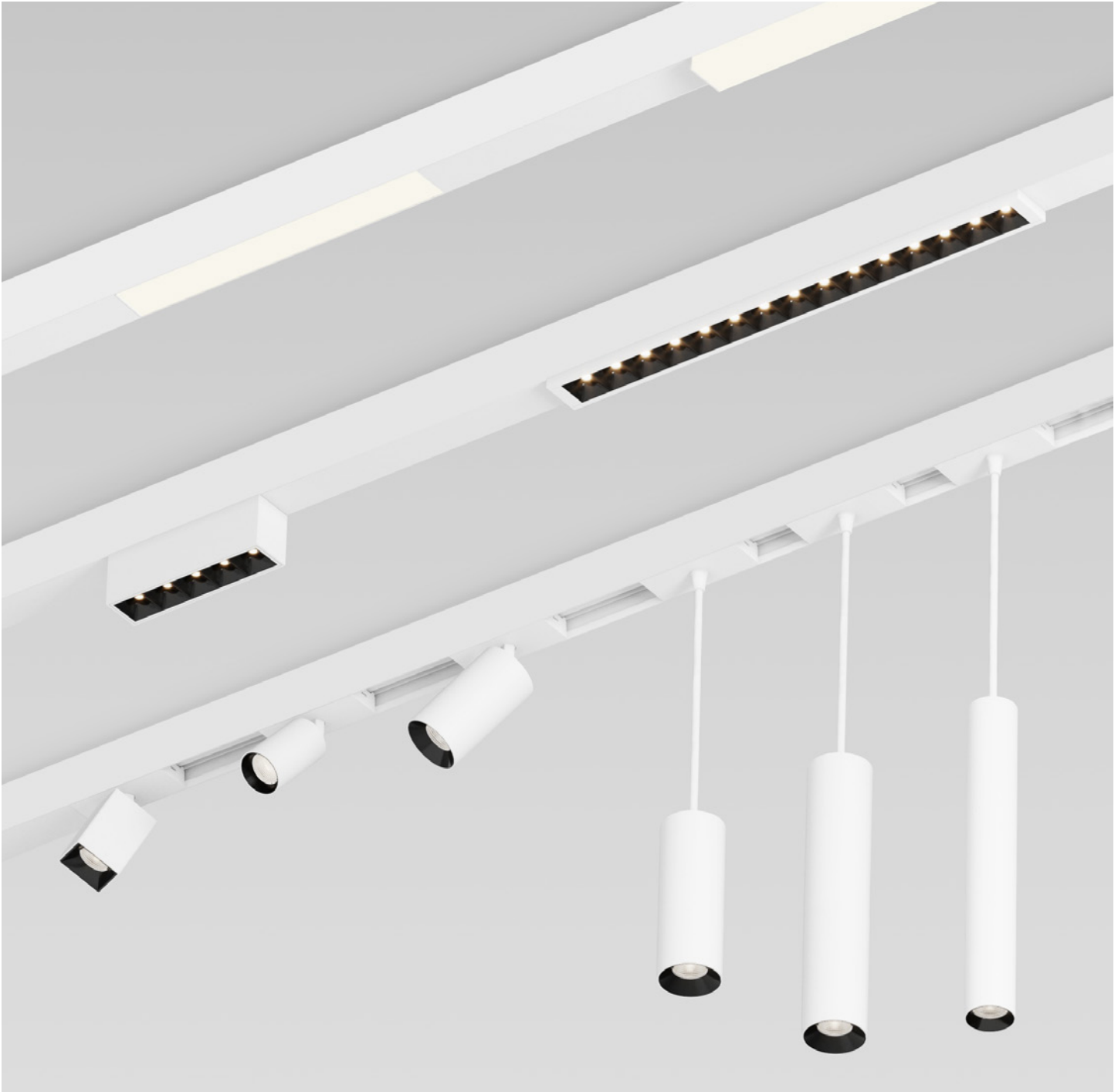


Project: _____

Type: _____

DESCRIPTION

The Pivot Track is a 48V, 1.55-inch wide linear system designed for pendant, recessed, or surface mounting to accommodate the Pivot Track Modules. With infinite run capabilities in segments of up to 8 feet, the Pivot Track can branch out horizontally and vertically to create a multitude of shapes, patterns, and effects for various architectural applications.





Project: _____
 Type: _____

Track

Example: PIVS-CR-9FT6IN(2X3FT-1X3FT6IN)-NA-120V-RD1-USC-1C1CCUD-NA-DRC-TMB-B-NA

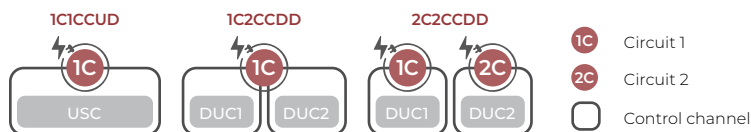
A drawing of your pattern is required - anything from a line drawing to an architectural drawing.

LUMINAIRE ID	TRACK TYPE	LUMINAIRE LENGTH ³	CORNER TYPE ^{4,5,6}
PIVS			
PIVS - Pivot Surface	CR ¹ - Continuous run PAT ² - Pattern ¹ A straight linear shape with no corners. ² A shape or pattern containing at least 1 corner.	##FT##IN (#X#FT#IN-#X#FT#IN-...) - ##FT##IN : total nominal length of continuous run or pattern in feet or inches (2' or longer) #X : quantity of each section #FT#IN : nominal length of each section in feet, specify between 2' and 8' ³ Consult the Maximum Track Wattage table on page 3 to determine the maximum load allowed per section.	#V - 2-way V connection #L - 2-way L connection #Y - 3-way Y connection #T - 3-way T connection #X - 4-way X connection NA - None ⁴ Specify number of corners (#) for each required corner type. ⁵ Consult factory for other angles. ⁶ Corners are unlit.

VOLTAGE	DIMMING ⁷	TRACK CHANNEL	CONTROL CHANNEL ¹¹	EMERGENCY SECTION
120 - 120V 277 - 277V UNV - 120V-277V	RND - Non-dimming RD1 - 1% 0-10V RDA ⁸ - DALI RLECS ^{8,9,10} - Lutron EcoSystem ⁷ Drivers are remote. A remote driver box is provided. ⁸ On-site commissioning is required. ⁹ Only available with USC, 1 circuit, and 1 control channel option (1C1CCUD). ¹⁰ Comes with a control box that must be installed remotely.	USC - Unified single channel DUC - Dual channel	1C1CCUD - 1 circuit, 1 control channel (USC) 1C2CCDD - 1 circuit, 2 control channels (DUC channel 1 - DUC channel 2) 2C2CCDD - 2 circuits, 2 control channels (DUC channel 1 - DUC channel 2) ¹¹ For more details, please see the circuit and channel specification below.	EC ¹² - Emergency light section NA - None ¹² Consult factory.

MOUNTING	OUTSIDE FINISH	INSIDE FINISH	OPTIONS
DRC			
DRC - Drywall ceiling	TMB - Textured matte black TMW - Textured matte white CF# - Custom finish, specify RAL#	B - Black W - White	FU120 - Fuse 120V FU277 - Fuse 277V NA - None

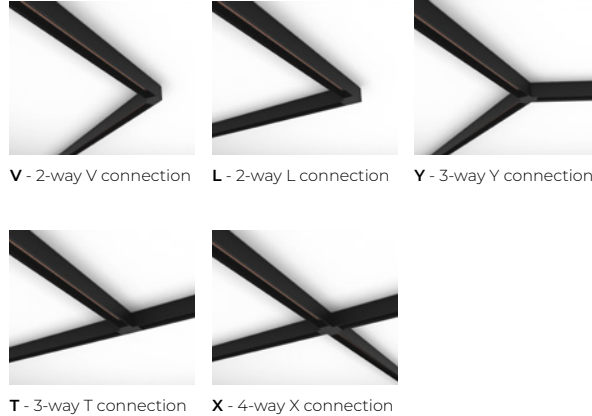
Circuit and channel specification



Track Details

Use the grid below to sketch and label the layout of your Pivot Track.

- Build your continuous run or pattern using track sections of 2' to 8'.
- The total wattage of all the modules installed in a track section must not exceed the maximum track wattage per section length (see table). Consult the Pivot Module spec sheet for the wattages of each module.
- Corners are unlit.
- Track length is not field adjustable.



V - 2-way V connection **L** - 2-way L connection **Y** - 3-way Y connection
T - 3-way T connection **X** - 4-way X connection

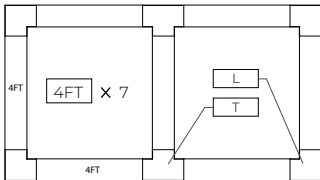
Maximum Track Wattage *

at 35K at 80 CRI

! Do not exceed the maximum wattage allowed per section of track.

LENGTH	USC	DUC	
		Channel 1	Channel 2
2FT	24 W	12 W	12 W
3FT	36 W	18 W	18 W
4FT	48 W	24 W	24 W
5FT	60 W	30 W	30 W
6FT	72 W	36 W	36 W
7FT	84 W	42 W	42 W
8FT	96 W	48 W	48 W

Pattern example



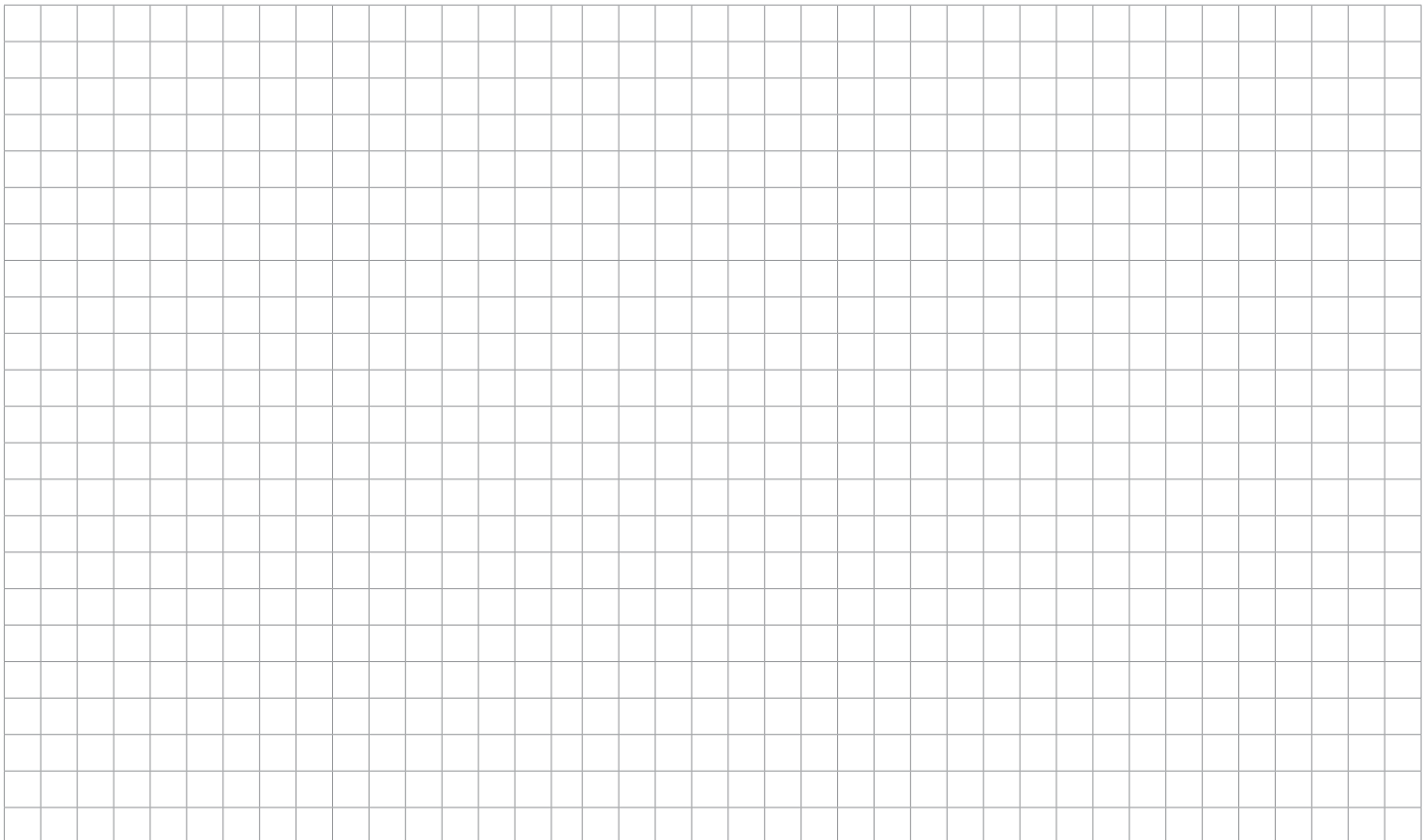
1. Specify the **TOTAL LUMINAIRE LENGTH** in feet or inches.

Example: 28FT(7X4FT)

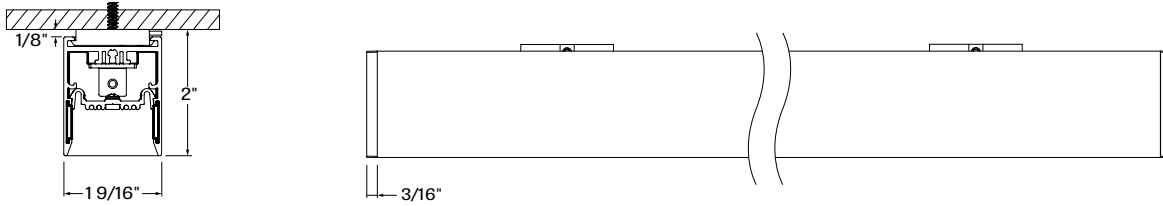
2. Specify the quantity of each **CORNER TYPE**.

Example: 4L-2T

* To determine the maximum wattage allowed per section of track, multiply the length of your section by 12 W/ft.

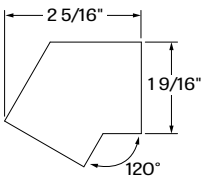


Dimensions

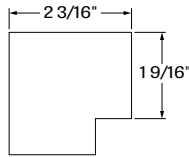


PIVS - Pivot Surface

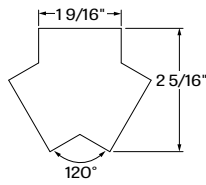
Corner Type



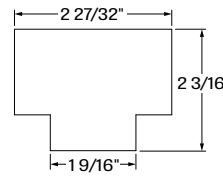
V - 2-way V connection



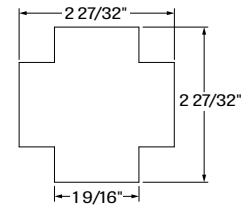
L - 2-way L connection



Y - 3-way Y connection



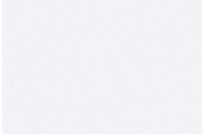
T - 3-way T connection



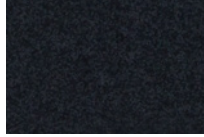
X - 4-way X connection

Finishes

Standard



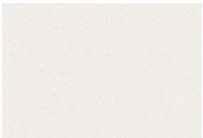
TMW - Textured Matte White



TMB - Textured Matte Black

Custom

Neutrals



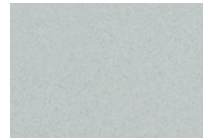
CRM - Cream



GRY - Gray



STG - Steel Gray



SAG - Sage Gray

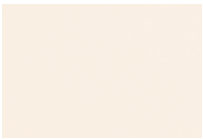


MOG - Moss Gray



BLB - Black Blue

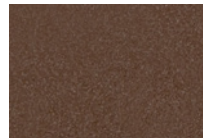
Designer



ALM - Almond



QRZ - Quartzite Texture



RST - Rust Fine Texture



GRB - Green Beige



YLW - Yellow



SLM - Salmon Pink



VIO - Pastel Violet



RED - Red



PRR - Purple Red



SMB - Storm Blue



DPB - Deep Blue



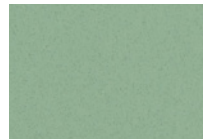
OCB - Ocean Blue



BLG - Blue Green



GNS - Green Smoke

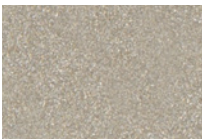


MNG - Mint Green

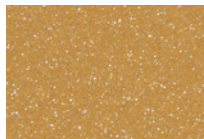


LMG - Lime Green

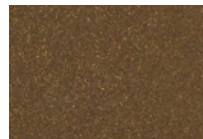
Metallics



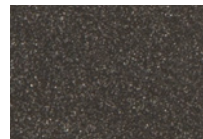
SND - Sand



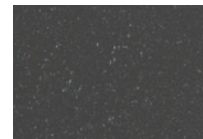
GLD - Gold



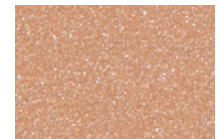
DGD - Dark Gold



IRN - Iron Ore



CNY - Canyon



SBP - Sandblast Copper



SWD - Sandalwood

Technical Specifications

LUMINAIRE LENGTH

Pivot track is available as either as a continuous run (straight linear shape with no corners) or as a pattern (shape or pattern containing at least 1 corner). It is built using track sections of 2' to 8'. The total nominal length must be specified in the product code, as well as the quantity and nominal length of each section. Lengths can be ordered in 1 foot increments. The track length is not field adjustable.

All individual sections are joined together onsite using the joiner kits provided. Lumenwerx offers joiner kits that are extremely simple to work with in the field and result in a fixture that appears virtually seamless with no light leak at any connection.



ELECTRICAL

The Pivot Track is powered by an integral (except for Surface) 48VDC, Class 2, SELV power supply with universal (120-277VAC) input. Rated lifetime of 50,000 hours at 50°C max. ambient (and 70°C max. case) temperature. At maximum driver load: Efficiency>90%, PF>0.9, THD<20%. The power supply is coupled to a proprietary dimming interface which allows one or both track channels to be controlled together or independently using a 0-10V or DALI signal. Both the power supply and the dimming interface can be serviced from below. For applications requiring Lutron Ecosystem control, a separate, remote interface can be provided to translate Ecosystem to 0-10V.

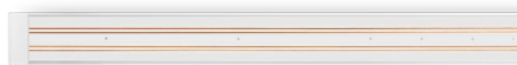
MOUNTING OPTIONS

Fixtures can be mounted directly to drywall and hard surface ceilings, hardware supplied by others.

FINISH

Outside - Powder-coat paint available in over 30 colors, including textured matte white and black. Custom colors are also available.

Inside - White or black



CONSTRUCTION

Track housing - Extruded aluminum, up to 90% recycled content

Joining system - Die cast zinc

Blank cover - Extruded aluminum

End cap - Die cast aluminum

WEIGHT

2ft - 1.8 lbs - 0.8 kg

4ft - 3.5 lbs - 1.6 kg

6ft - 5.3 lbs - 2.4 kg

8ft - 7.1 lbs - 3.2 kg

CERTIFICATIONS

ETL - Rated for Indoor Dry Locations. Conforms to UL Standard 1574 and certified to CAN/CSA Standard C22.2 No. 250.0.

WARRANTY

Lumenwerx provides a five-year limited warranty of electrical and mechanical performance of the luminaires, including the LED boards, drivers, and auxiliary electronics. Lumenwerx will repair or replace defective luminaires or components at our discretion, provided they have been installed and operated in accordance with our specifications. Other limitations apply, please refer to the full warranty on our website.