

# TPR WESTFLEX® RGB VERTICAL BEND LED NEON

IP67

## Description:

The **TPR Westflex® LED Neon Vertical Bend Solid Color** is a flexible Neon replacement for Architectural and Entertainment venues. It is available in several color temperatures of White and is IP67 for extreme weather conditions. Great for outlining buildings and creating curved lines of light, this product also has UV inhibitors. It cuts to length every 3.28" for custom length runs.



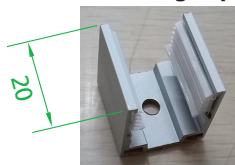
## Specifications:

<b>Voltage:</b>	24V DC (CV)
<b>Power Consumption:</b>	3.7 watts per foot (@ full RGB)
<b>Segmentation:</b>	3.28" (83.33mm)
<b>Dimensions:</b>	5/8" x 5/8"
<b>Lamp Life:</b>	50,000 Hours (70% Lumen Maintenance)
<b>Min Bend Radius:</b>	4.75"
<b>Max Run Length:</b>	21' Single Feed, 42' Double Feed
<b>Lumen Output:</b>	170 lumens (@ full RGB)
<b>Control:</b>	DMX

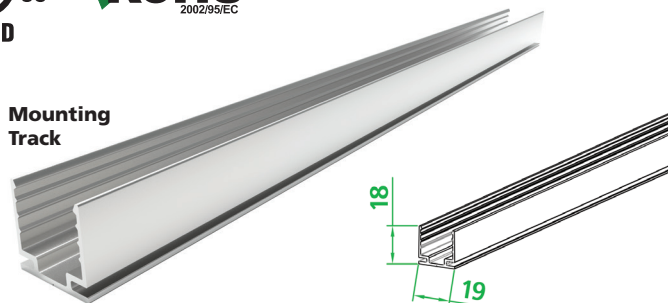
## Certifications:



Mounting Clip



Mounting Track

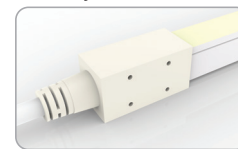


## Ordering Logic:

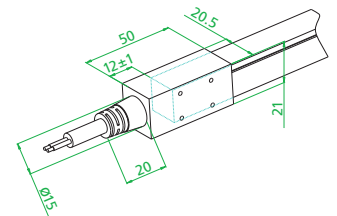
MODEL	COLOR	FEED TYPE
TPR-FL-NEON	RGB - VB	BF (bottom feed) EF (end feed) SF-L (side feed left) SF-R (side feed right)

## TPR Westflex® Flat-top Neon End Dimensions

Dual Injection-Molded Front Connector-End Feed

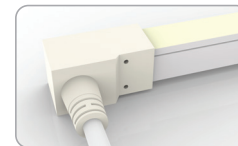


TPR-FL-NEON-FC1-10'-EF

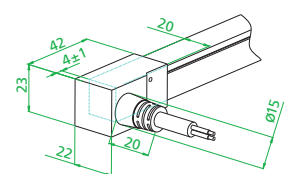


Dimensions in mm

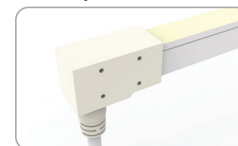
Dual Injection-Molded Front Connector-Side Feed



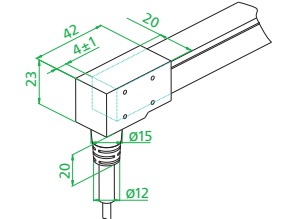
TPR-FL-NEON-FC1-10'-SF-Left  
TPR-FL-NEON-FC1-10'-SF-Right



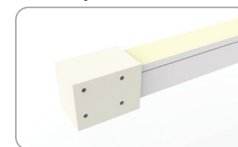
Dual Injection-Molded Front Connector-Bottom Feed



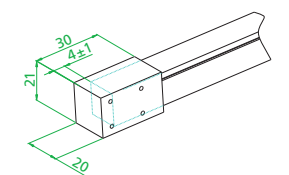
TPR-FL-NEON-FC1-10'-BF



Dual Injection-Molded End Cap



TPR-FL-NEON-EC



Note: All Front Connectors will be made with a 10' tail.