

The beautiful and simple California Series LED Pedestrian Luminaires depict not only the California lifestyle, but the architecture of California as well. This ornamental piece is a delightful sight to see and a great model to illuminate any urban, rural, retail, or park, or campus setting.

The different caps and shades depict different California styles and a touch of California's historic Spanish mission era. The California Series is the perfect selection to combine both design and efficiency in light performance. Designed, tooled, manufactured and assembled in the USA.



\* Using Architectural Arm 4 (AA4)



### STAR POWER OPTICAL SYSTEM

The Star Power reflector is an excellent system which provides great value and performance.

#### LED WATTAGE CHART

	32L	48L	64L
350 milliamps	-	51w	66w
530 milliamps	-	80w	102w
700 milliamps	71w	104w	137w
1050 milliamps	106w	156w	205w

Project Name:

Type:

Cat#	Top	Shade	Light Dist.	# of LEDs	Milliamps	Kelvin	Volts	Mounting	Color	Options
California 1 25" Diameter (CAL-1)	Top 1 (TP1)	Shade 1 (S1)	Type 2 (T2)	32 (32L)	350 (35) <sup>①</sup>	2700K, 70 CRI (27K7) <sup>②</sup>	120-277 (UNV)	Arm Mount (AM) <sup>③</sup>	Bronze Textured (BRZ)	House Side Shield (HSS)
	Top 2 (TP2)	Shade 2 (S2)	Type 3 (T3)	48 (48L)	530 (53) <sup>①</sup>	2700K, 80 CRI (27K8) <sup>② ④</sup>	347-480 (HV)	Wall Mount (WM) <sup>③</sup>	White Textured (WHT)	Bird Spikes (BS)
	Top 3 (TP3)	Shade 4 (S4)		64 (64L)	700 (7)	3000K, 70 CRI (30K7) <sup>②</sup>			Smooth White Gloss (SWT)	Photocell (PC) <sup>⑤</sup>
		Shade 5 (S5)	Type 4 (T4)	1050 (1)	3000K, 80 CRI (30K8) <sup>② ④</sup>	3500K, 80 CRI (35K8) <sup>②</sup>	4000K, 70 CRI (40K7)	4000K, 80 CRI (40K8) <sup>②</sup>	Silver (SVR)	Nema 7-Pin Receptacle (PE7) <sup>⑥</sup>
		Shade 6 (S6)							3500K, 80 CRI (35K8) <sup>②</sup>	Black Textured (BLK)
		Shade 7 (S7)	Type 5 (T5)	5000K, 70 CRI (50K7)	5000K, 70 CRI (50K7)	5000K, 80 CRI (50K8) <sup>②</sup>	5000K, 70 CRI (50K7)	5000K, 80 CRI (50K8) <sup>②</sup>	Graphite Textured (GPH)	Receptacle + Shorting Cap (PER) <sup>⑥</sup>
		Shade 8 (S8)							5000K, 70 CRI (50K7)	5000K, 80 CRI (50K8) <sup>②</sup>
									Custom (CS)	Frosted Lens (FL) <sup>⑥</sup> Marine Grade Finish (MGF)

**Notes:**

- ① 48L-64L Only
- ② Consult Factory for Lead Time. Consult Factory for 90 CRI Requests.
- ③ For Arm Mount, please select an Architectural Arm (AA) separately.
- ④ Universal Voltage 120-277
- ⑤ Only compatible with Arm Mount Arch Arms: 2, 3, 7-11, 13-18
- ⑥ 48L option only, using IK-10 rated Silicone Optics
- ⑦ 3000K or lower must be selected to meet International Dark Sky Association certification.
- ⑧ For Wall Mount, please select an Architectural arm (AA) separately.

# PRODUCT SPECIFICATIONS

## HOUSING

Heavy Duty Marine Grade Cast and Spun Aluminum with 7 shade options and 3 cap options

## ELECTRICAL

- 120-277 Volts (UNV) or 347-480 Volts (HV)
- 0-10V dimming driver
- Driver power factor at maximum load is  $\geq .95$ , THD maximum load is 15%
- LED Drivers Ambient Temp. Min is  $-40^{\circ}\text{C}$  and Ambient Temp. Max ranges from  $50^{\circ}\text{C}$  to  $55^{\circ}\text{C}$  and, in some cases, even higher. Consult the factory for revalidation by providing the fixture catalog string before quoting and specifying it.
- All internal wiring UL certified for 600 VAC and  $105^{\circ}\text{C}$
- CRI 70, 80 or 90
- Color temperatures: 2700K, 3000K, 3500K, 4000K, 5000K
- Surge Protection: 20KA supplies as standard.

## OPTIONS

- **BIRD SPIKES (BS)**—offers effective and humane deterrent for larger bird species and provides cost-effective long-term solution to nuisance bird infestations..
- **MARINE GRADE FINISH (MGF)**—A multi-step process creating protective finishing coat against harsh environments.
  - Chemically washed in a 5 stage cleaning system.
  - Pre-baked
  - Powder coated 3-5 mils of Zinc Rich Super Durable Polyester Primer.
  - 1-2 feet inside pole coverage top and bottom.
  - Oven Baked.
  - Finished Powder Coating of Super Durable Polyester Powder Coat 3-5 mil thickness.
- **SHIELDS (HSS)**—House Side Shield (HSS) is designed for full property line cut-off.

## CONTROLS

- **FSP-211 (FSP-X)**—Passive infrared (PIR) sensor providing multi-level control based on motion/daylight contribution.
  - All control parameters adjustable via wireless configuration remote storing and transmitting sensor profiles.
  - FSP-20 mounting heights 9-20 feet
  - FSP-40 mounting heights 21-40 feet.
  - Includes 5 dimming event cycles, 0-10V dimming with motion sensing, reprogrammable in the field.
  - FSIR-100 commissioning remote is required to change sensor settings. Please contact factory for ordering.
- **NEMA 7-PIN RECEPTACLE (PE7)**—An ANSI C136.41-2013 receptacle provides electrical and mechanical interconnection between photo control cell and luminaire. Dimming receptacle available two or four dimming contacts supports 0-10 VDC dimming methods or Digital Addressable Lighting Interface (DALI), providing reliable power interconnect. All Receptacle options are Architectural Arm Mounted. Architectural Arms 2, 3, 7-11, 13-18.

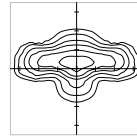
## FINISH

5 mils Powder Coat

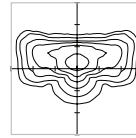
## OPTICS

Star Power T2, T3, T4 and T5

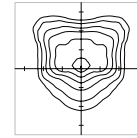
- IES Types



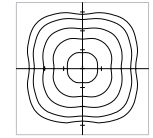
TYPE II (T2)



TYPE III (T3)



TYPE IV (T4)



TYPE V (T5)

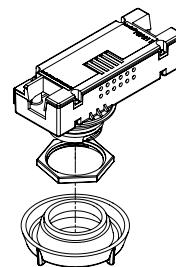
## WARRANTY

Standard Warranty is 5 years for Driver and LEDs

## LISTINGS

UL 1598 Listed  
IDA Dark Sky Approved

## FSP-211

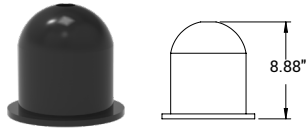


The information and specifications on this document are subject to change without any notification. All values are design, nominal, typical or prorated values when measured under internal and external laboratory conditions.

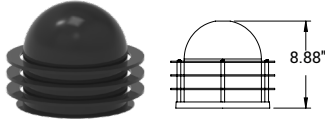
# PRODUCT SPECIFICATIONS

## TOPS

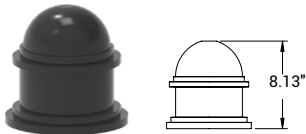
### TOP 1 Smooth



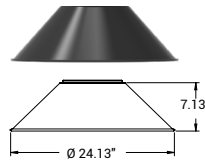
### TOP 2 Alum. Rings



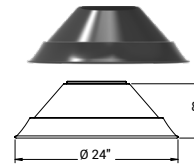
### TOP 3



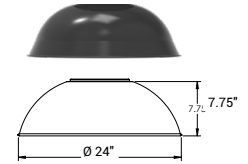
## SHADES



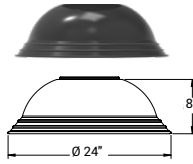
SHADE 1



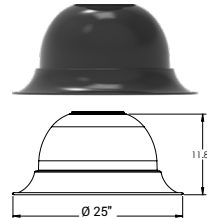
SHADE 2



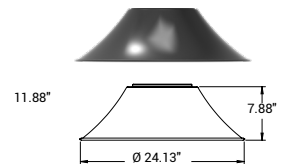
SHADE 4



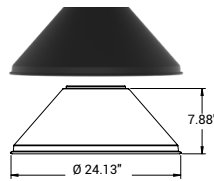
SHADE 5



SHADE 6



SHADE 7



SHADE 8

PART NUMBER	T2 LUMENS	LM/W	T3 LUMENS	LM/W	T4 LUMENS	LM/W	T5 LUMENS	LM/W	Watts
CAL-1-32L-7-30K7	7242	102	7313	103	7384	104	7100	100	71
CAL-1-32L-7-40K7	7526	106	7597	107	7597	107	7313	103	71
CAL-1-32L-7-50K7	7952	112	7881	111	7952	112	7526	106	71
CAL-1-32L-1-30K7	10812	102	10918	103	11024	104	10600	100	106
CAL-1-32L-1-40K7	11236	106	11342	107	11342	107	10918	103	106
CAL-1-32L-1-50K7	11872	112	11766	111	11872	112	11236	106	106
CAL-1-48L-35-30K7	5202	102	5304	104	5406	106	5151	101	51
CAL-1-48L-35-40K7	5406	106	5508	108	5661	111	5355	105	51
CAL-1-48L-35-50K7	5610	110	5712	112	5865	115	5457	107	51
CAL-1-48L-53-30K7	8160	102	8320	104	8480	106	8080	101	80
CAL-1-48L-53-40K7	8480	106	8640	108	8880	111	8400	105	80
CAL-1-48L-53-50K7	8800	110	8960	112	9200	115	8560	107	80
CAL-1-48L-7-30K7	10608	102	10816	104	11024	106	10504	101	104
CAL-1-48L-7-40K7	11024	106	11232	108	11544	111	10920	105	104
CAL-1-48L-7-50K7	11440	110	11648	112	11960	115	11128	107	104
CAL-1-48L-1-30K7	15912	102	16224	104	16536	106	15756	101	156
CAL-1-48L-1-40K7	16536	106	16848	108	17316	111	16380	105	156
CAL-1-48L-1-50K7	17160	110	17472	112	17940	115	16692	107	156
CAL-1-64L-35-30K7	6732	102	6864	104	6996	106	6666	101	66
CAL-1-64L-35-40K7	6996	106	7128	108	7326	111	6930	105	66
CAL-1-64L-35-50K7	7260	110	7392	112	7590	115	7062	107	66
CAL-1-64L-53-30K7	10404	102	10608	104	10812	106	10302	101	102
CAL-1-64L-53-40K7	10812	106	11016	108	11322	111	10710	105	102
CAL-1-64L-53-50K7	11220	110	11424	112	11730	115	10914	107	102
CAL-1-64L-7-30K7	13974	102	14248	104	14522	106	13837	101	137
CAL-1-64L-7-40K7	14522	106	14796	108	15207	111	14385	105	137
CAL-1-64L-7-50K7	15070	110	15344	112	15755	115	14659	107	137
CAL-1-64L-1-30K7	20910	102	21320	104	21730	106	20705	101	205
CAL-1-64L-1-40K7	21730	106	22140	108	22755	111	21525	105	205
CAL-1-64L-1-50K7	22550	110	22960	112	23575	115	21935	107	205

3000k or warmer must be selected to meet International Dark-Sky Association certification.

Lumen Maintenance Data							
Ambient Temperature	Drive Current	L90 Hours*	L70 Hours**	30,000 Hours*	50,000 Hours*	60,000 Hours*	100,000 Hours**
25°C	Up to 700mA	58,000	173,000	95.7%	91.6%	89.6%	82.1%
	1050mA	48,000	143,000	94.3%	89.5%	87.2%	78.5%

\*Reported extrapolations per IESNA TM-21      \*\*Projected extrapolations per IESNA TM-21

EPA	CAL-1
Single	1.4



701 Kingshill Place, Carson, CA 90746  
Call Us Today (310) 341-2037

nlsighting.com