

The beautiful and simple California Series LED Pedestrian Luminaires depict not only the California lifestyle, but the architecture of California as well. This ornamental piece is a delightful sight to see and a great model to illuminate any urban, rural, retail, or park, or campus setting.

The different caps and shades depict different California styles and a touch of California's historic Spanish mission era. The California Series is the perfect selection to combine both design and efficiency in light performance. Designed, tooled, manufactured and assembled in the USA.



* Using Architectural Arm 4 (AA4)



STAR POWER OPTICAL SYSTEM

The Star Power reflector is an excellent system which provides great value and performance.

LED WATTAGE CHART

	80L
350 milliamps	85w
530 milliamps	128w
700 milliamps	168w
1050 milliamps	263w

Project Name:

Type:

Cat#	Top	Shade	Light Dist.	# of LEDs	Milliamps	Kelvin	Volts	Mounting	Color	Options
California 2 30" Diameter (CAL-2)	Top 1 (TP1)	Shade 1 (S1)	Type 2 (T2)	80 (80L)	350 (35)	2700K, 70 CRI (27K7) ⑥	120-277 (UNV)	Arm Mount (AM) ②	Bronze Textured (BRZ)	House Side Shield (HSS)
	Top 2 (TP2)	Shade 6 (S6)	Type 3 (T3)		530 (53)	2700K, 80 CRI (27K8) ① ⑥	347-480 (HV)	Wall Mount (WM) ③	White Textured (WHT)	Bird Spikes (BS)
	Top 3 (TP3)		Type 4 (T4)		700 (7)	3000K, 70 CRI (30K7) ⑥			Smooth White Gloss (SWT)	Photocell (PC) ④
			Type 5 (T5)		1050 (1)	3000K, 80 CRI (30K8) ① ⑥		Silver (SVR)	Nema 7-Pin Receptacle (PE7) ④	
						3500K, 80 CRI (35K8) ①		Black Textured (BLK)	Photocell + Receptacle (PCR) ④	Receptacle + Shorting Cap (PER) ④
					4000K, 70 CRI (40K7)		Smooth Black Gloss (SBK)		FSP-211 with Motion Sensor (FSP-20) ⑤	
					4000K, 80 CRI (40K8) ①		Graphite Textured (GPH)		*9'-20' Heights (FSP-40) ⑤	
					5000K, 70 CRI (50K7)		Grey Textured (GRY)		*21'-40' Heights	
					5000K, 80 CRI (50K8) ①		Custom (CS)		Marine Grade Finish (MGF)	

Notes:

- ① Consult Factory for Lead Time. Consult Factory for 90 CRI Requests.
- ② For Arm Mount, please select an Architectural Arm (AA) separately.
- ③ Universal Voltage 120-277
- ④ Only compatible with Arm Mount Arch Arms: 2, 3, 7-11, 13-18
- ⑤ 3000K or lower must be selected to meet International Dark Sky Association certification.
- ⑥ For Wall Mount, please select an Architectural arm (AA) separately.

PRODUCT SPECIFICATIONS

HOUSING

Heavy Duty Marine Grade Cast and Spun Aluminum with 2 shade options and 3 cap options

ELECTRICAL

- 120-277 Volts (UNV) or 347-480 Volts (HV)
- 0-10V dimming driver
- Driver power factor at maximum load is $\geq .95$, THD maximum load is 15%
- LED Drivers Ambient Temp. Min is -40°C and Ambient Temp. Max ranges from 50°C to 55°C and, in some cases, even higher. Consult the factory for revalidation by providing the fixture catalog string before quoting and specifying it.
- All internal wiring UL certified for 600 VAC and 105°C
- CRI 70, 80 or 90
- Color temperatures: 2700K, 3000K, 3500K, 4000K, 5000K
- Surge Protection: 20KA supplies as standard.

OPTIONS

- **BIRD SPIKES (BS)**—offers effective and humane deterrent for larger bird species and provides cost-effective long-term solution to nuisance bird infestations..
- **MARINE GRADE FINISH (MGF)**—A multi-step process creating protective finishing coat against harsh environments.
 - Chemically washed in a 5 stage cleaning system.
 - Pre-baked
 - Powder coated 3-5 mils of Zinc Rich Super Durable Polyester Primer.
 - 1-2 feet inside pole coverage top and bottom.
 - Oven Baked.
 - Finished Powder Coating of Super Durable Polyester Powder Coat 3-5 mil thickness.
- **SHIELDS (HSS)**—House Side Shield (HSS) is designed for full property line cut-off.

CONTROLS

- **FSP-211 (FSP-X)**—Passive infrared (PIR) sensor providing multi-level control based on motion/daylight contribution.
 - All control parameters adjustable via wireless configuration remote storing and transmitting sensor profiles.
 - FSP-20 mounting heights 9-20 feet
 - FSP-40 mounting heights 21-40 feet.
 - Includes 5 dimming event cycles, 0-10V dimming with motion sensing, reprogrammable in the field.
 - FSIR-100 commissioning remote is required to change sensor settings. Please contact factory for ordering.
- **NEMA 7-PIN RECEPTACLE (PE7)**—An ANSI C136.41-2013 receptacle provides electrical and mechanical interconnection between photo control cell and luminaire. Dimming receptacle available two or four dimming contacts supports 0-10 VDC dimming methods or Digital Addressable Lighting Interface (DALI), providing reliable power interconnect. All Receptacle options are Architectural Arm Mounted. Architectural Arms 2, 3, 7-11, 13-18.

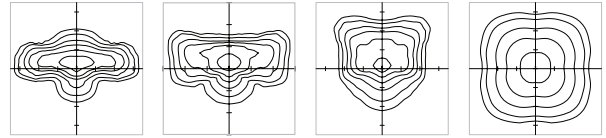
FINISH

5 mils Powder Coat

OPTICS

Star Power T2, T3, T4 and T5

- IES Types



TYPE II (T2)

TYPE III (T3)

TYPE IV (T4)

TYPE V (T5)

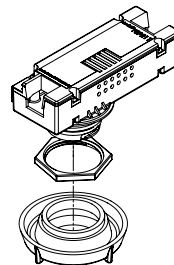
WARRANTY

Standard Warranty is 5 years for Driver and LEDs

LISTINGS

UL 1598 Listed
IDA Dark Sky Approved

FSP-211

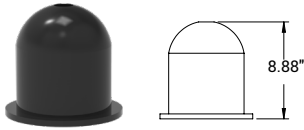


The information and specifications on this document are subject to change without any notification. All values are design, nominal, typical or prorated values when measured under internal and external laboratory conditions.

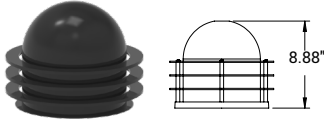
PRODUCT DIMENSIONS

TOPS

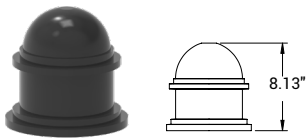
TOP 1 Smooth



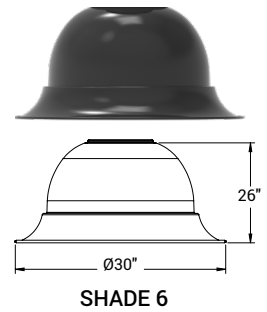
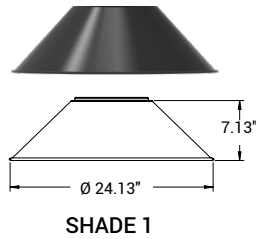
TOP 2 Alum. Rings



TOP 3



SHADES



PART NUMBER	T2 LUMENS	LM/W	T3 LUMENS	LM/W	T4 LUMENS	LM/W	T5 LUMENS	LM/W	Watts
CAL-2-80L-35-30K7	8500	100	8585	101	8670	102	9095	107	85
CAL-2-80L-35-40K7	8840	104	8925	105	9010	106	9520	112	85
CAL-2-80L-35-50K7	9180	108	9265	109	9350	110	10030	118	85
CAL-2-80L-53-30K7	12800	100	12928	101	13056	102	13696	107	128
CAL-2-80L-53-40K7	13312	104	13440	105	13568	106	14336	112	128
CAL-2-80L-53-50K7	13824	108	13952	109	14080	110	15104	118	128
CAL-2-80L-7-30K7	16800	100	16968	101	17136	102	17976	107	168
CAL-2-80L-7-40K7	17472	104	17640	105	17808	106	18816	112	168
CAL-2-80L-7-50K7	18144	108	18312	109	18480	110	19824	118	168
CAL-2-80L-1-30K7	26300	100	26563	101	26826	102	28141	107	263
CAL-2-80L-1-40K7	27352	104	27615	105	27878	106	29456	112	263
CAL-2-80L-1-50K7	28404	108	28667	109	28930	110	31034	118	263

3000k or warmer must be selected to meet International Dark-Sky Association certification.

Lumen Maintenance Data							
Ambient Temperature	Drive Current	L90 Hours*	L70 Hours**	30,000 Hours*	50,000 Hours*	60,000 Hours*	100,000 Hours**
25°C	Up to 700mA	58,000	173,000	95.7%	91.6%	89.6%	82.1%
	1050mA	38,000	96,000	93.0%	85.4%	81.8%	68.8%

*Reported extrapolations per IESNA TM-21 **Projected extrapolations per IESNA TM-21

EPA	CAL-2
Single	2.74