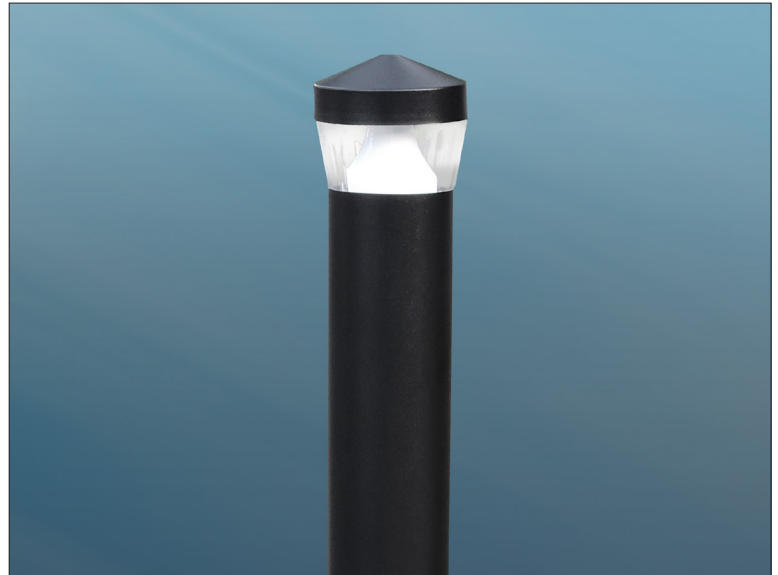


The Radian Bollard is a fusion of contemporary design and state of the art lighting technology. The performance of this bollard produces a smooth uniform light pattern at a broad angle at extremely efficient low wattages.

The Radian is available in 3000, 4000 or 5000 Kelvin temperatures to blend with any residential, retail, or pathway environment. The lens is standard clear with Paracline Optic.



**STAR POWER**  
OPTICAL SYSTEM

### STAR POWER OPTICAL SYSTEM

The Star Power reflector is an excellent system which provides great value and performance.

#### LED WATTAGE CHART

	<b>16L</b>
<b>350 milliamps</b>	17w
<b>530 milliamps</b>	26w
<b>700 milliamps</b>	35w

Project Name \_\_\_\_\_ Type: \_\_\_\_\_

Cat#	Height	Shaft Dim	Light Dist.	# of LEDs	Milliamps	Kelvin	Volts	Mounting	Color	Shields	Options
Radian (RDN)	20" (2)	6" Round (6R)	Type 3 (T3)	16 (16L)	350 (35)	3000K (30K7)	120-277 (UNV)	Anchor Base (AB)	Bronze Textured (BRZ)	House Side Shield (HSS)	Photocell (PC) ①
	30" (3)		Type 5 (T5)		530 (53)	4000K (40K7)	347-480 (HV)		White Textured (WHT)		Vandal Resistant Base (VRB)
	40" (4)				700 (7)	5000K (50K7)			Smooth White Gloss (SWT)		Marine Grade Finish (MGF)
						Silver (SVR)	Dimming Ballast (DB)				
						Black Textured (BLK)	Surge Protector (20KA)				
						Smooth Black Gloss (SBK)					
								Graphite Textured (GPH)			
									Grey Textured (GRY)		
									Custom (CS)		

Notes:  
① Universal Voltage 120-277

## PRODUCT SPECIFICATIONS

**Housing:** Aluminum; Heavy Duty Spun Aluminum Cap  
**LED:** Lumileds Luxeon MX  
**Optics:** Star Power; T3, T5  
**Watts:** 17-35  
**Driver:** 0-10V Dimming driver as standard by Philips Advance

**Kelvin:** 3000K, 4000K, or 5000K  
**CRI:** 70  
**Finish:** 5 mils Powder Coat  
**Warranty:** Standard Warranty is 5 years for Driver and LEDs

## PRODUCT DIMENSIONS

**RADIAN BOLLARD - LUMEN DATA CHART**

PART NUMBER	T3 Lumens	T3 Lm/W	T5 Lumens	T5 Lm/W	Watts
RDN-X-6R-TX-16L-35-50K7	1,821	107	2,082	122	17
RDN-X-6R-TX-16L-35-40K7	1,821	107	2,082	122	17
RDN-X-6R-TX-16L-35-30K7	1,734	102	1,983	117	17
RDN-X-6R-TX-16L-53-50K7	2,913	112	3,331	128	26
RDN-X-6R-TX-16L-53-40K7	2,913	112	3,331	128	26
RDN-X-6R-TX-16L-53-30K7	2,774	107	3,173	122	26
RDN-X-6R-TX-16L-7-50K7	3,641	104	4,164	119	35
RDN-X-6R-TX-16L-7-40K7	3,641	104	4,164	119	35
RDN-X-6R-TX-16L-7-30K7	3,468	99	3,966	113	35



DIMENSION	RDN
A	20" - 40"
B	6" OD

