



Height

10' - 20'

Pole Shaft

Shall be Round Straight Aluminum 6063 Alloy Extrusion. Poles have ground lug welded inside hand hole opposite side of the Pole Extrusion. Pole shaft is welded to base plate on top and bottom of base plate.

Base Plate

Manufactured from aluminum. The Base Plate is 3/4" thick for poles 10 to 20 feet.

Anchor Bolts

All anchor bolts are hot dipped galvanized steel and come with two galvanized nuts and washers per bolt. Minimum yield strength 50,000 psi. Anchor bolts are not included for Custom Bolt Circle.

Base Cover

All base covers are fabricated two-piece 6063 aluminum and powder coated to match the pole. Square base cover comes standard, Round base cover optional.

Hand-Hole

A reinforced hand-hole is 12" on center from the base plate and is constructed of 3"x 5" rectangular aluminum tubing which is welded to pole shaft for added strength. The hand-hole covers are provided with internal bridge support and powder coated to match pole finish.

Pole Cap

All poles come with a removable polymer pole cap installed. All pole caps are black finish.

Finish

All poles are treated with sand blast media for a near white finish, power blasted with 100 psi prior to powder coat application. Poles are pre-heated then electrostatically applied polyester powder coat with a 3 to 5 mil thickness for maximum adherence.

Marine Grade Finish

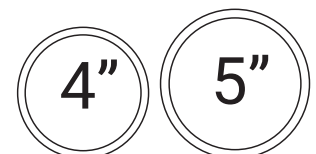
All poles are washed through a 5-stage cleaning system with a deionized rinse, a 3 to 5 mils zinc rich durable polyester primer powder coat, followed by a 3 to 5 mils super durable polyester powder coat finish.

Anodized Under Powder

Anodized Under Powder (AUP) poles are dipped in a 3 step process for a clear anodized finish inside and outside of the pole. The final stage is electrostatically applied polyester powder coat with a 3 to 5 mill thickness for maximum adherence.

Vibration Dampener

The Vibration Dampener is factory installed. The Vibration Dampener consists of a rugged galvanized chain coated with heavy duty polyester tubing that is factory secured at the bottom 2-3rds of the pole and field secured by contractor at the base during installation.



Project Name:

Type:

RSFP ORDERING GUIDE

Cat#	Height	Pole Dimension	Gauge	Base Pattern
Round Straight Fluted Pole (RSFP)	10' (10) 12' (12) 14' (14) 16' (16) 18' (18) 20' (20)	4" Round (4R) 5" Round (5R)	.188 Wall Thickness (188)	(10'-20') 8 3/16" - 10 3/16" Bolt Circle (9BC) (20'-Over) 11 1/2" - 14" Bolt Circle (12BC) Custom Bolt Circle (CBC) <i>* Consult Factory</i>

Mounting	Color	Bolts	Options
Single (SGL) Double (D-90) (D-180) Triple (T-90) Quad (QD) No Drill (ND) <i>*Tenon Option</i>	Bronze Textured (BRZ) White Textured (WHT) Smooth White Gloss (SWT) Silver (SVR) Green Textured (GRN) Hunter Green Textured (HGN) Black Textured (BLK) Smooth Black Gloss (SBK) Graphite Textured (GPH) Grey Textured (GRY) Custom (CS)	3/4" x 30" (3430) 1" x 36" (136) Less Anchor Bolts (LAB)	GFI Kit (GF120A) <i>20 Amp Weather Proof Receptacle</i> GFI Provision Only (PROV) Round Base Cover (RBC) 1/2" Coupling (COUP) <i>* Specify Location</i> Vibration Dampener (VD) Extra Hand Hole (XHH) <i>* Specify Location</i> Marine Grade Finish (MGF) Anodized Under Powder (AUP)

Max. allowable EPA - RSFP poles (per AASHTO LRFDLTS-1)

Catalog Number	Shaft Length, ft	Wall thickness, in.	Shaft dia., in.	Base Plate, in.	Bolt Circle, in.	Bolts	80 mph	90 mph	100 mph	110 mph	115 mph	120 mph	130 mph	140 mph	150 mph	160 mph	170 mph	180 mph	190 mph	200 mph										
RSFP-10-4R-188-9BC-34340	10	0.188	4	9" sq. X 3/4"	9-3/16	3/4"X30"	20.0	500	20.0	500	16.2	405	13.3	333	11.9	298	10.8	270	8.3	208	7.0	175	5.9	148	5.1	128	4.4	110	3.9	98
RSFP-12-4R-188-9BC-34340	12	0.188	4	9" sq. X 3/4"	9-3/16	3/4"X30"	20.0	500	16.4	410	12.8	320	10.0	250	8.5	213	7.6	190	6.1	153	5.0	125	4.1	103	3.5	88	3.0	75	2.6	65
RSFP-12-5R-188-9BC-34340	12	0.188	5	9" sq. X 3/4"	9-3/16	3/4"X30"	20.0	500	20.0	500	20.0	500	17.5	438	16.0	400	14.5	363	11.9	298	10.1	253	8.3	208	6.7	168	5.9	148	5.2	130
RSFP-14-4R-188-9BC-34340	14	0.188	4	9" sq. X 3/4"	9-3/16	3/4"X30"	17.2	430	13.3	333	10.4	260	8.1	203	7.2	180	6.6	165	5.3	133	4.3	108	3.5	88	2.7	68	2.3	60	1.8	60
RSFP-14-5R-188-9BC-34340	14	0.188	5	9" sq. X 3/4"	9-3/16	3/4"X30"	20.0	500	20.0	500	17.7	443	14.3	358	12.7	318	11.6	290	9.5	238	7.7	193	6.5	163	5.4	135	4.5	113	3.6	90
RSFP-15-4R-188-9BC-34340	15	0.188	4	9" sq. X 3/4"	9-3/16	3/4"X30"	15.6	390	12.0	300	9.3	233	7.3	183	6.5	163	5.8	145	4.5	113	3.7	93	2.8	70	2.3	60	1.8	60	1.4	60
RSFP-15-5R-188-9BC-34340	15	0.188	5	9" sq. X 3/4"	9-3/16	3/4"X30"	20.0	500	20.0	500	16.2	405	12.8	320	11.6	290	10.3	258	8.5	213	6.8	170	5.7	143	4.7	118	3.7	93	3.1	78
RSFP-16-4R-188-9BC-34340	16	0.188	4	9" sq. X 3/4"	9-3/16	3/4"X30"	13.4	335	10.1	253	7.8	195	5.9	148	5.2	130	4.6	115	3.8	95	3.4	85	2.5	63	1.7	60	1.2	60	0.7	60
RSFP-16-5R-188-9BC-34340	16	0.188	5	9" sq. X 3/4"	9-3/16	3/4"X30"	20.0	500	17.5	438	13.8	345	10.8	270	9.8	245	8.5	213	7.0	175	5.5	138	4.4	110	3.6	90	3.0	75	2.4	60
RSFP-18-4R-188-9BC-34340	18	0.188	4	9" sq. X 3/4"	9-3/16	3/4"X30"	10.9	273	8.1	203	6.2	155	4.7	118	4.1	103	3.4	85	2.5	63	1.8	60	1.2	60	0.9	-	0.5	-	0.2	-
RSFP-18-5R-188-9BC-34340	18	0.188	5	9" sq. X 3/4"	9-3/16	3/4"X30"	19.4	485	14.6	365	11.2	280	8.7	218	7.7	193	6.8	170	5.3	133	4.1	103	3.3	83	2.4	60	1.9	60	1.2	60
RSFP-20-4R-188-12BC-136	20	0.188	4	12" sq. X 1"	12	1"X36"	9.1	228	6.6	165	4.7	118	3.5	88	2.8	70	2.5	63	1.7	60	1.1	-	0.6	-	0.2	-	-	-	-	
RSFP-20-5R-188-12BC-136	20	0.188	5	12" sq. X 1"	12	1"X36"	16.5	413	12.3	308	9.4	235	7.1	178	6.0	150	5.4	135	3.9	98	3.1	78	2.1	60	1.4	60	1.0	60	0.5	60

*Pole Assemblies With EPA>9.0 Require Specific Review

***Anchor Bolts are NOT included with Custom Bolt Circle.
*Do NOT pour concrete referencing this drawing. Consult Factory.**

***All wind loading calculations are based on sustained wind force plus an additional 1.3 gust.**

MOUNTING CONFIGURATION



Single (SGL)



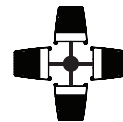
Double (D-90)



Double (D-180)



Triple (T-90)



Quad (QD)

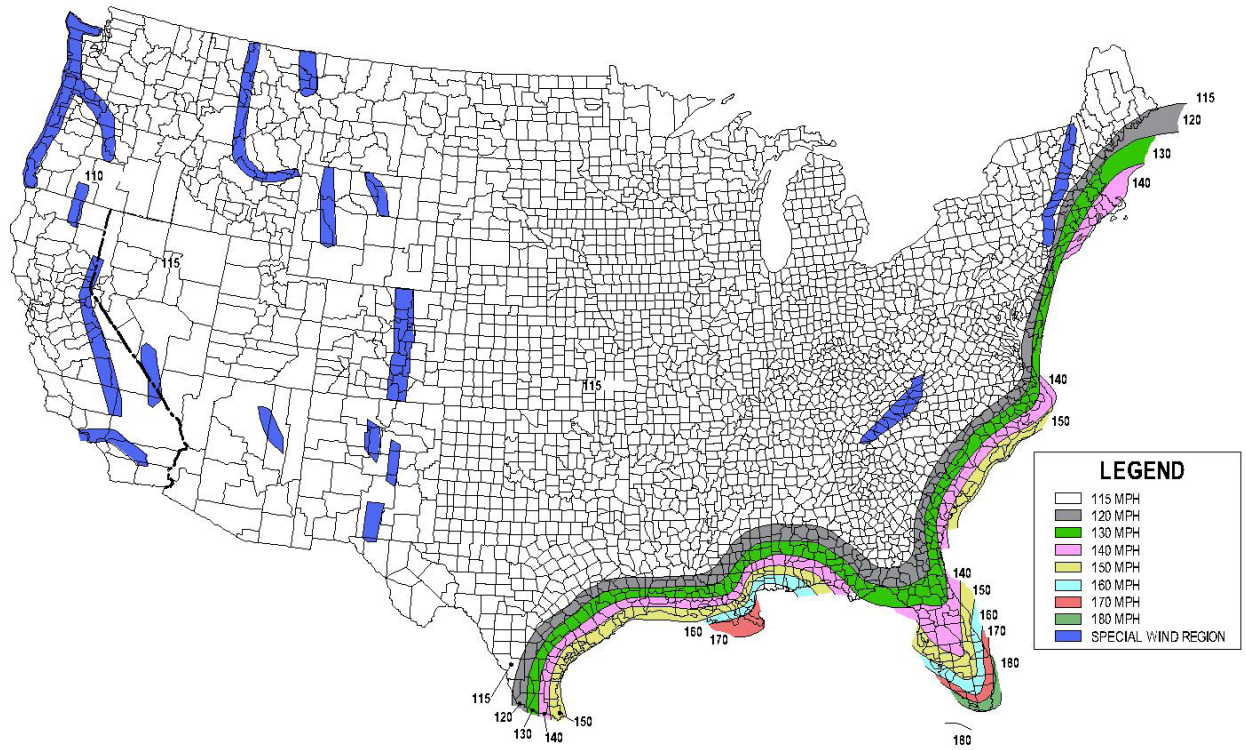
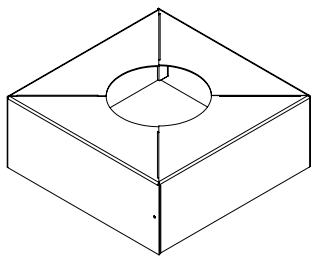
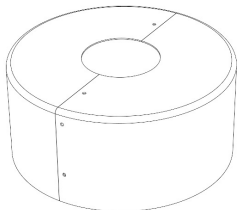


FIG. 3.8-1b - 700-Year MRI Basic Wind Speed, mph (AASHTO LRFDLTS-1)

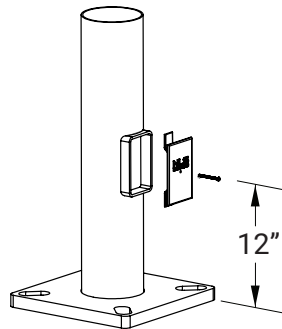
- 1) All wind load calculations are based on sustained wind force plus and additional 1.3 gust
- 2) Wind Map is to be used as a reference only. Please coordinate with local agencies for further review.
- 3) Wind Map values are based on a 50 year mean recurrence. These values do not account for severe conditions, such as hurricanes, tornadoes, etc...
- 4) For review of poles with additional configurations (arms, banners, shorter/longer pole lengths, etc...), please contact factory.



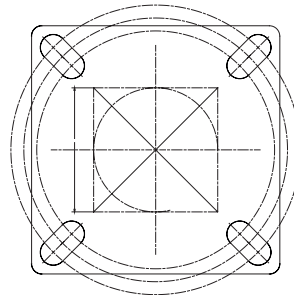
Base Cover



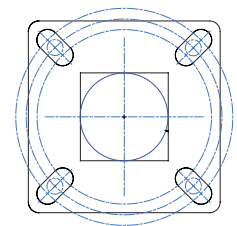
**Optional Round
Base Cover**



Base Detail



12" Base Detail



9" Base Detail