



LED WATTAGE CHART

	16L
350 milliamps	18w (2412-2596 Lumens)
530 milliamps	28w (3508-3776 Lumens)
700 milliamps	36w (4385-4720 Lumens)
1050 milliamps	56w (6022-6482 Lumens)

**Form**

- Elegant Rectilinear Extruded Aluminum Housing
- Corrosion Resistant Stainless Steel External Hardware
- Sleek, Low Profile Housing
- Spec Grade Performance
- Engineered For Optimum Thermal Management
- Anchor Base Plate For Easy Installation
- 8 Architectural Finishes
- Standard, RAL Colors Available

**Function**

- Micro Optics IES Distributions T2, T3, T4, T5
- 0-10V Dimming Drivers
- THD @ Max Load < 15%
- Power factor @ Max Load < 0.95
- 2700K, 3000K, 3500K, 4000K, Or 5000K
- 16L LED Configuration
- 18-56 Watts (Single Head Wattage)
- CRI 70, 80, or 90
- Extruded Aluminum Heat Sink
- 5 Mils Powder Coat
- Aluminum Pole .250 Wall

**Reliability**

- Silicone Micro Optics
- 5 Year Standard Warranty
- IP67 Optics
- Reduces Energy Consumption And Costs Up To 65%
- Dark Sky Approved



Project Name:

Type:

## TRC-1 ORDERING GUIDE

\*Ordering information for Pole &amp; Fixture

Cat#	Light Dist.	No. of LEDs	Milliamps	Kelvin Temp	Volts
Trac 1 (TRC-1)	Type 2 (T2)	16 (16L)	350 (35)	2700K, 70 CRI (27K7) ⑤	120-277 (UNV)
	Type 3 (T3)		530 (53)	2700K, 80 CRI (27K8) ① ⑤	340-480 (HV)
	Type 4 (T4)		700 (7)	3000K, 70 CRI (30K7) ⑤	
	Type 5 (T5)		1050 (1)	3000K, 80 CRI (30K8) ① ⑤	
				3500K, 80 CRI (35K8)	
				4000K, 70 CRI (40K7)	
				4000K, 80 CRI (40K8) ①	
				5000K, 70 CRI (50K7)	
				5000K, 80 CRI (50K8) ①	

Config.	Color	Options	Pole Height
Single (SGL)	Bronze Textured (BRZ)	Nema 7-Pin Receptacle (PE7) ②	8' (8)
Double (D-180)	White Textured (WHT)	Photocell (PC) ②	10' (10)
MPF Triple (TRI) ②	Smooth White Gloss (SWT)	FSP-211 with Motion Sensor (FSP-8) ②	12' (12)
MPF Quad (QD) ②	Silver Textured (SVR)	8' and Below (FSP-20) ②	No Pole (NO)
MPF (MPF) ②	Black Textured (BLK)	9'-20" Heights	Aluminum Pole .250 Wall Comes With 12" Anchor Base 1" Thick, 1" Anchor Bolts
	Smooth Black Gloss (SBK)	Marine Grade Finish (MGF)	
	Graphite Textured (GPH)	House Side Shield (HSS)	
	Grey (GRY)	Rotated Optic Left (ROL)	
	Custom (CS)	Rotated Optic Right (ROR)	
		No Options (NO)	

## Notes:

- ① Consult Factory For Lead Time. Consult Factory For 90 CRI Requests.
- ② MPF Mid Pole Fixture. Consult Factory
- ③ Only Available When Ordering NLS Pole
- ④ Universal Voltage 120-277
- ⑤ 3000k or warmer must be selected to meet International Dark-Sky Association certification.

## ELECTRICAL

- 120-277 Volts (UNV) or 347-480 Volts (HV)
- 0-10V dimming driver by Philips Advance
- Driver power factor at maximum load is  $\geq .95$ , THD maximum load is 15%
- LED Drivers Ambient Temp. Min is -40°C and Ambient Temp. Max ranges from 50°C to 55°C and, in some cases, even higher. Consult the factory for revalidation by providing the fixture catalog string before quoting and specifying it.
- All drivers, controls, and sensors housed in enclosed compartment
- CRI 70, 80, or 90
- Color temperatures: 2700K, 3000K, 3500K, 4000K, 5000K
- Surge Protection: 20KA supplied as standard.

## OPTIONS

- NEMA 7-Pin Receptacle (PE7). Only available when ordering NLS pole.
- PHOTO CELL (PC)
- DIMMING CONTROL (FSP-20) (FSP-40)
- MARINE GRADE FINISH (MGF)—A multi-step process creating protective finishing coat against harsh environments. Chemically washed in a 5 stage cleaning system. Pre-baked, Powder coated 3-5 mils of Zinc Rich Super Durable Polyester Primer. Oven Baked. Finished Powder Coating of Super Durable Polyester Powder Coat 3-5 mil thickness.
- SHIELD (HSS)—House Side Shield is designed for full property line cut-off.
- ROTATED OPTICS (ROL) (ROR)

## CONTROL OPTIONS

- FSP-211 with Motion Sensor (FSP-XX)—Passive infrared (PIR) sensor providing multi-level control based on motion/daylight contribution.
- All control parameters adjustable via wireless configuration remote storing and transmitting sensor profiles.
  - FSP-20 mounting heights 9-20 feet
  - FSP-40 mounting heights 21-40 feet.
  - Includes 5 dimming event cycles, 0-10V dimming with motion sensing, re-programmable in the field.
  - Motion sensor mounted to access cover
  - FSIR-100 commissioning remote is required to change sensor settings. Please contact factory for ordering.

- NEMA 7-PIN RECEPTACLE (PE7)—An ANSI C136.41-2013 receptacle provides electrical and mechanical interconnection between photo control cell and luminaire. Dimming receptacle available two or four dimming contacts supports 0-10 VDC dimming methods or Digital Addressable Lighting Interface (DALI), providing reliable power interconnect.

## CONSTRUCTION

- Extruded Aluminum
- Internal cooling fins
- Corrosion resistant external hardware
- One-piece silicone gasket ensures water tight seal for electronics compartment
- Two-piece silicone Micro Optic system ensures IP67 seal around each PCB

## FINISH

- 3-5 mils electrostatic powder coat.
- NLS Lighting standard high-quality finishes prevent corrosion and protects against extreme environmental conditions

## WARRANTY

Five-year limited warranty for drivers and LEDs.

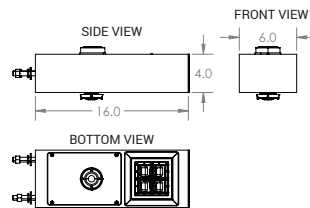
## OPTICS

Silicone optics high thermal stability and light output provide higher powered LEDs with minimized lumen depreciation. UV stability with scratch resistance increases exterior application durability. Silicone optics do not yellow, crack or brittle over time

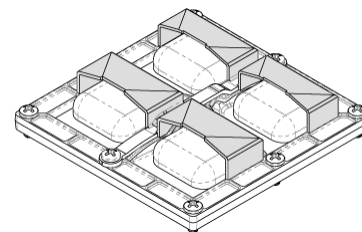
## LISTINGS

- Certified to UL 1598
- UL 8750
- CSA C22.2 No. 250.0
- IP65/ IP67 Rated
- IK10 Rated

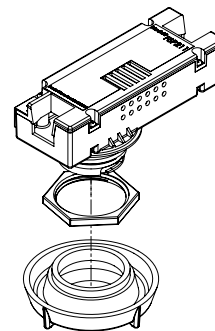
## DIMENSIONS



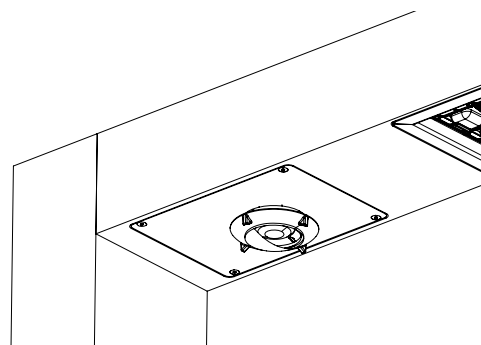
## HOUSE SIDE SHIELD



## FSP-211



## Motion Sensor Placement



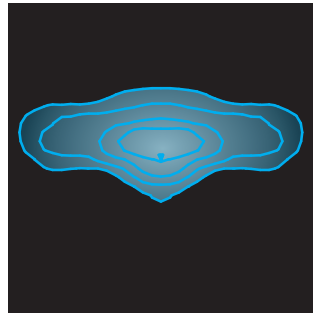
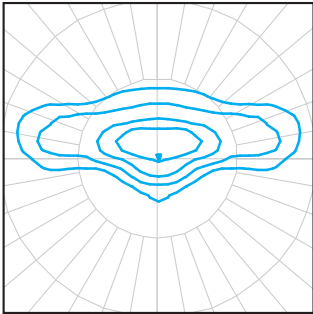
The information and specifications on this document are subject to change without any notification. All values are design, nominal, typical or prorated values when measured under internal and external laboratory conditions.

**NLS**  
LIGHTING

701 Kingshill Place, Carson, CA 90746  
P: (310) 341-2037

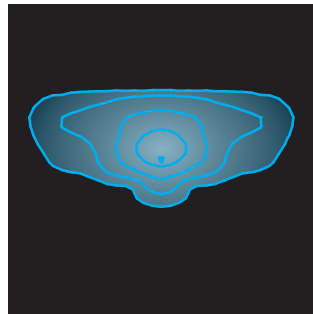
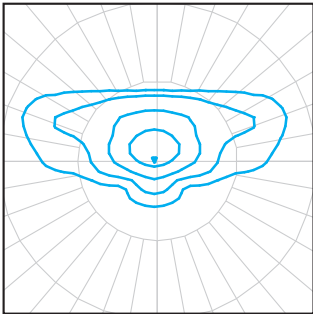
[nslighting.com](http://nslighting.com)

## IES DISTRIBUTIONS



### T2 Optic

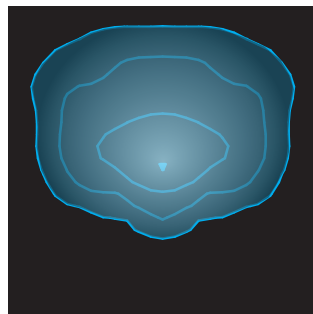
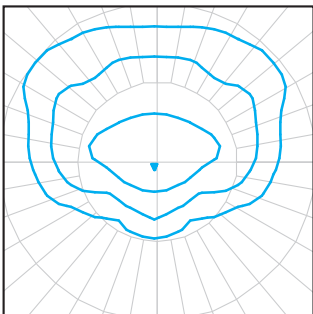
The Type II distribution is used for narrow pathways and trails, narrow entrances of shopping centers, parking lots and office complex's.



### T3 Optic

The type III distribution is meant for roadway lighting, general parking areas and other areas where a larger area of lighting is required. Type III lighting needs to be placed to the side of the area, allowing the light to project outward and fill the area. This produces a filling light flow.

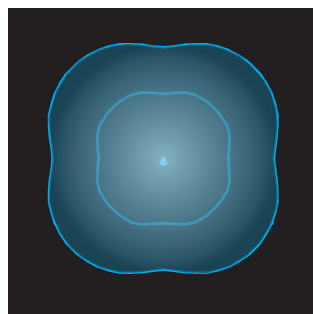
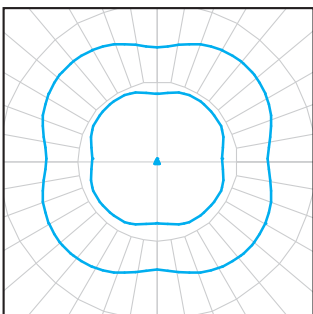
Type III light distributions have a preferred lateral width of 40 degrees. This distribution is intended for luminaires mounted at or near the side of medium width roadways or areas, where the width of the roadway or area does not exceed 2.75 times the mounting height.



### T4 Optic

The type IV distribution produces a semicircular light meant for mounting on the sides of buildings and walls. It's best for illuminating the perimeter of parking areas and businesses. The intensity of the Type IV lighting has the same intensity at angles from 90 degrees to 270 degrees.

Type IV light distributions have a preferred lateral width of 60 degrees. This distribution is intended for side-of-road mounting and is generally used on wide roadways where the roadway width does not exceed 3.7 times the mounting height.



### T5 Optic - Symmetrical

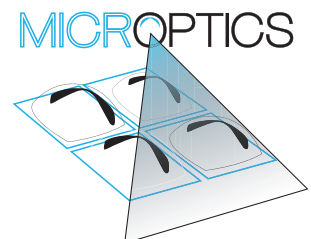
Type V produces a symmetrical distribution that has the same intensity at all angles. This distribution has a uniform symmetry of candlepower that is essentially the same at all lateral angles. It is meant for large, commercial parking lot lighting as well as areas where sufficient, evenly distributed light is necessary

## SILICONE OPTICS

NLS Lighting Silicone Micro Optical System technology takes quality and performance to the highest level. Vandal resistant, superior clarity—Micro Optics have become the best and lasting solution in the industry.

### BENEFITS

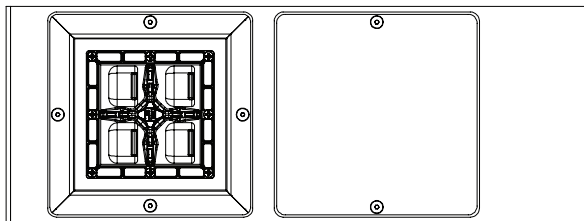
- Produces superior 96% clarity
- Heat resistant to 150° C, 50% higher than acrylic
- Ecologically friendly—no glare
- Vandal-resistant
- Does not brittle, crack, or yellow over time



## OPTICAL CONFIGURATIONS

Rotatable Optics (ROR) Rotated Right, (ROL) Rotated Left options available. Optics field and factory rotatable.

TRC-1 / 16L



## TRAC 1 LUMEN CHART

TRAC LUMEN CHART													
PART NUMBER	T2	LM/W	BUG	T3	LM/W	BUG	T4	LM/W	BUG	T5	LM/W	BUG	WATTS
TRC-1-16L-35-30K7	2,412	134	B1-U0-G1	2,425	135	B1-U0-G1	2,425	135	B1-U0-G1	2,472	137	B2-U0-G0	18
TRC-1-16L-35-40K7	2,532	141	B1-U0-G1	2,546	141	B1-U0-G1	2,546	141	B1-U0-G1	2,596	144	B2-U0-G1	18
TRC-1-16L-35-50K7	2,532	141	B1-U0-G1	2,546	141	B1-U0-G1	2,546	141	B1-U0-G1	2,596	144	B2-U0-G1	18
TRC-1-16L-53-30K7	3,508	125	B1-U0-G1	3,527	126	B1-U0-G1	3,527	126	B1-U0-G1	3,596	128	B2-U0-G1	28
TRC-1-16L-53-40K7	3,683	132	B1-U0-G1	3,704	132	B1-U0-G1	3,704	132	B1-U0-G1	3,776	135	B2-U0-G1	28
TRC-1-16L-53-50K7	3,683	132	B1-U0-G1	3,704	132	B1-U0-G1	3,704	132	B1-U0-G1	3,776	135	B2-U0-G1	28
TRC-1-16L-7-30K7	4,385	122	B1-U0-G1	4,409	122	B1-U0-G1	4,409	122	B1-U0-G1	4,495	125	B3-U0-G1	36
TRC-1-16L-7-40K7	4,604	128	B1-U0-G1	4,630	129	B1-U0-G1	4,630	129	B1-U0-G1	4,720	131	B3-U0-G1	36
TRC-1-16L-7-50K7	4,604	128	B1-U0-G1	4,630	129	B1-U0-G1	4,630	129	B1-U0-G1	4,720	131	B3-U0-G1	36
TRC-1-16L-1-30K7	6,022	108	B1-U0-G1	6,056	108	B1-U0-G1	6,056	108	B1-U0-G1	6,174	110	B3-U0-G1	56
TRC-1-16L-1-40K7	6,323	113	B1-U0-G1	6,359	114	B1-U0-G1	6,359	114	B1-U0-G1	6,482	116	B3-U0-G1	56
TRC-1-16L-1-50K7	6,323	113	B1-U0-G1	6,359	114	B1-U0-G1	6,359	114	B1-U0-G2	6,482	116	B3-U0-G1	56

3000k or warmer must be selected to meet International Dark-Sky Association certification.

## TRAC 1 LUMEN CHART HSS

PART NUMBER	T2 HSS	LM/W	BUG	T3 HSS	LM/W	BUG	T4 HSS	LM/W	BUG	WATTS
TRC-1-16L-35-30K7	1,775	99	B0-U0-G0	1,716	95	B0-U0-G0	1,660	92	B0-U0-G0	18
TRC-1-16L-35-40K7	1,864	104	B0-U0-G0	1,802	100	B0-U0-G0	1,743	97	B0-U0-G0	18
TRC-1-16L-35-50K7	1,864	104	B0-U0-G0	1,802	100	B0-U0-G0	1,743	97	B0-U0-G1	18
TRC-1-16L-53-30K7	2,582	92	B0-U0-G1	2,496	89	B0-U0-G1	2,415	86	B0-U0-G1	28
TRC-1-16L-53-40K7	2,711	97	B0-U0-G1	2,621	94	B0-U0-G1	2,535	91	B0-U0-G1	28
TRC-1-16L-53-50K7	2,711	97	B0-U0-G1	2,621	94	B0-U0-G1	2,535	91	B0-U0-G1	28
TRC-1-16L-7-30K7	3,227	90	B1-U0-G1	3,120	87	B0-U0-G1	3,018	84	B0-U0-G1	36
TRC-1-16L-7-40K7	3,389	94	B1-U0-G1	3,276	91	B0-U0-G1	3,169	88	B0-U0-G1	36
TRC-1-16L-7-50K7	3,389	94	B1-U0-G1	3,276	91	B0-U0-G1	3,169	88	B0-U0-G1	36
TRC-1-16L-1-30K7	4,433	79	B1-U0-G1	4,285	77	B0-U0-G1	4,145	74	B1-U0-G1	56
TRC-1-16L-1-40K7	4,654	83	B1-U0-G1	4,499	80	B1-U0-G1	4,353	78	B1-U0-G1	56
TRC-1-16L-1-50K7	4,654	83	B1-U0-G1	4,499	80	B1-U0-G1	4,353	78	B1-U0-G1	56

MODEL	WIDTH	DEPTH	LENGTH	WEIGHT
TRAC - 1	6"	4"	16"	11

EPA	SGL	DBL
	.5	1.1

Lumen Maintenance Data							
Ambient Temperature	Drive Current	L90 Hours*	L70 Hours**	30,000 Hours*	50,000 Hours*	60,000 Hours*	100,000 Hours**
25°C	Up to 700mA	58,000	173,000	95.7%	91.6%	89.6%	82.1%
	1050mA	48,000	143,000	94.3%	89.5%	87.2%	78.5%
*Reported extrapolations per IESNA TM-21				**Projected extrapolations per IESNA TM-21			



701 Kingshill Place, Carson, CA 90746  
P: (310) 341-2037

[nslighting.com](http://nslighting.com)

## TRAC POLE RECTANGULAR ALUMINUM POLE

### SHAFT

Rectangular Aluminum Pole (RAP) shaft (.250 Wall) is 6061 T6 Extruded Aluminum, 4 X 6 inch to provide a seamless transition into the Trac fixture. Poles have ground lug welded inside hand-hole opposite side of the pole extrusion. Pole Extrusion is conjoined to Anchor Base by welding internal and external to pole shaft. For custom configuration consult Factory.

### ANCHOR BOLTS

All anchor bolts are fully hot dipped galvanized and come with two galvanized nuts and washers per bolt. Anchor bolts are not included for Custom Bolt Circle. Anchor Bolts are "J" style, with a 4" hook at the end for added strength. 1" Anchor Bolts are 1" diameter x 36" long with a 4" long "J" hook.

### ANCHOR BASE

Base plates are machined from 6061 Aluminum, 12" square, 1" thick with 1" anchor bolts.

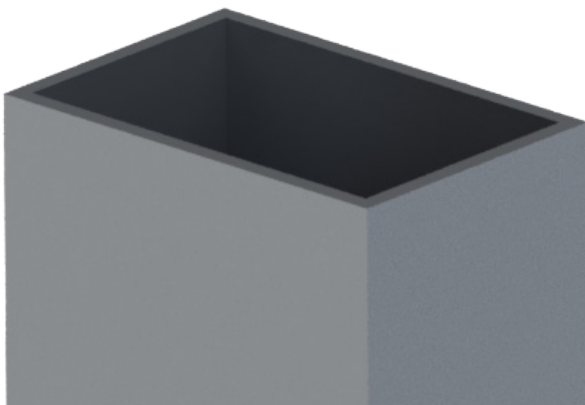
### HAND HOLE COVER AND POLE CAP

All poles come with removable machined aluminum pole cap. All poles caps are powder coated to match the pole. All base covers are made of aluminum and powder coated to match the pole. Hand Hole is constructed of 3"x 5" rectangular aluminum tubing which is welded to pole shaft for added strength. Hand Hole covers are provided with internal bridge support and also powder coated to match pole finish.

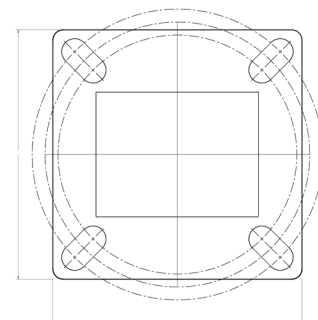
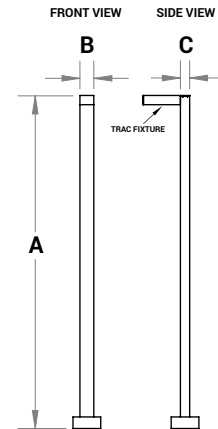
### FINISH

All poles have minimum 3 to 5 mils powder coat finish. All poles are sandblasted prior to powder coat application.

### RECTANGULAR ALUMINUM POLE DETAIL



- \* Anchor Bolts are NOT included with Custom Bolt Circle.
- \* Do NOT pour concrete referencing this drawing. Consult Factory.
- \* Must Specify 4-Bolt Pattern.
- \* Customer responsible for doing calculations if NLS pole is not ordered.



\*Consult Factory for Bolt Circle Template

DIMENSION	RAP
A	8-12 ft. or Custom Height
B	6 in.
C	4 in.