

### GENERAL SPECIFICATION

LED: High efficiency mid-power LEDs.

LED Dimming: Standard 0-10V 1% dimming driver.

Mounting: Driver mounted in 4" square by 2 1/8" deep junction box.

Steel City #52171 or equivalent (supplied by others). Must be mounted in a controlled environment with an area temperature range of 32°-131°F.

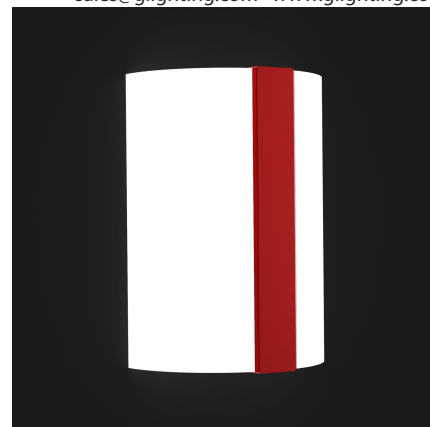
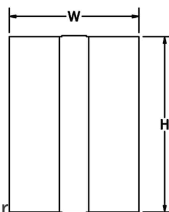
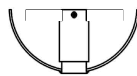
Body: Formed 18ga steel or .050 aluminum body.

Surge Protection: External surge protector provided as standard.

Acrylic: UL-94 HB Flame Class rated.

Standard Finishes: Highly durable oven cured no VOC premium powder coat.

Custom: Contact factory for custom lamping, acrylic, or sizing.



SAMPLE CATALOG NUMBER:					
GL-4575-		E5-	W-	NSN-	A
MODEL NO.	LAMPING	ACRYLIC	FINISH	OPTION(S)	
GL-4575	W in 7 7/8" mm 200 H in 10 7/8" mm 277 D in 4" mm 102	E0. 1LED30 E5. 1LED35 E4. 1LED40	Standard: W. White Opal  Optional: S. Satin White F. Faux Alabaster M. Earth Marble 3N. Linen Cast Resin  Acrylic is UL-94 HB Flame Class rated.	Standard: Powder Coat BLK-Black BL-Blue GR-Gray LG-Light Gray BE-Beige PAB-Antique Brass PA-Painted Aluminum PTC-Painted Copper WH-White DBZ-Dark Bronze NSN-New Satin Nickel BRN-Brown RD-Red CH-Champagne RG-Reed Green SG-Sungold GM-Gun Metal POR-Oil Rubbed Bronze  Textured Powder TLV-Light Verdigris TWH-Textured White TBL-Textured Black TS-Textured Silver TBN-Terra Brown TBZ-Textured Bronze	A. No Options B. Top White Perforated Diffuser Top perforated diffuser painted white. C. Bottom White Perforated Diffuser Bottom perforated diffuser painted white. EL. Emergency LED Remote mount up to 5' from lamps in controlled environment with an area temperature of 32°- 131°F. LED only. Specify 120 or 277 voltage.

All dimensions are nominal.

### Light Source Definition

Lamp	LED	CRI	Rated Life Hrs	Board Lumens	Kelvin
1LED30	11W	80	50000	1855	3000
1LED35	11W	80	50000	1855	3500
1LED40	11W	80	50000	1855	4000

Universal Voltage unless otherwise specified.