

Fixture Type: _____

Model Number: _____

Project Name: _____

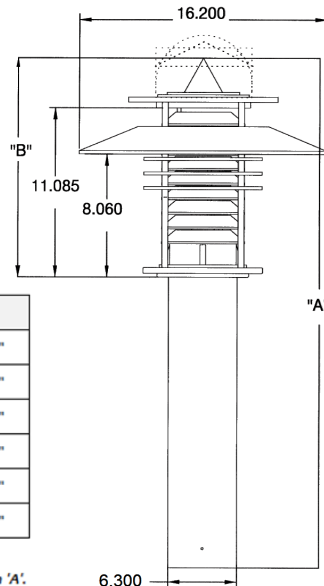
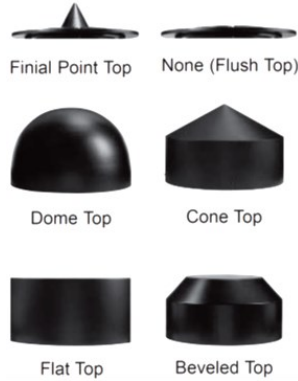


EUROTECH

Architectural LED Bollard



shown with aluminum shade and triple rings



Size	Top Style	A	B
6"	Beveled	46.1"	14.5"
	Flat	46.1"	14.5"
	Dome	45.4"	14.8"
	Cone	46.2"	14.9"
	Pointed	44.8"	13.8"
	None	42.6"	11.6"

Note: standard 42" model dimensions.
For 30" models, subtract 12" from dimension 'A'.

General: The high impact and modern design of the Eurotech series provides for a unique design within the environment and is perfect for pathway illumination.

Exterior: Sand cast, marine-grade aluminum top, head, and mounting base. Spun aluminum shade. Extruded aluminum bollard tube. Bollard tube can be cut to custom length; consult factory. Stainless steel hardware and fasteners.

Wattage: Available wattages: 15 watt, and 21 watt. Available color temperatures: 3000K, 4000K, and amber (590nm). CRI>70.

Driver: Constant current; maximum wattage = 40 watts; universal input voltage 120v-277v (50/60Hz); THD<20%. Power Factor >0.90. 0-10V dimming standard for a dim range of 100% down to 10%.

Heat Sink: Finned aluminum heat sink with black electrocoating securing heat sink to LED module.

Finish: Textured polyester powder coat finish. Black, bronze, gray, white, silver, and verde green available. Consult factory for custom finishes.

Lens: Outer lens available in clear acrylic (-CA) or opal polycarbonate (-OP).

Gaskets: EPDM gaskets are standard.

Dimensions: 6.30" diameter standard with overall height (OAH) options of 30" and 42". For custom height options, consult factory.

Tops: Six top styles available: beveled (-B), cone (-C), dome (-D), flat (-F), finial (-P), and none (-N).

Mounting: Mount bollard using the provided cast mounting base, template, and (4) 1/2" anchor bolts.

Options: Recessed outlet box/cover (-GFI)
PIR Motion Sensor (-PIR)
Houseside Shields (-180HSS and -270HSS)

Certifications: ANSI/UL 1598, 8750
Operating temperature: -40°C to +50°C
5-year warranty (see Terms & Conditions for details)



content of specification sheet is subject to change.

N60 W14592 Kaul Avenue
Menomonee Falls, WI 53051

P 877 965 0005
intrigueled.com

Aug-22

Fixture Type: _____

Model Number: _____

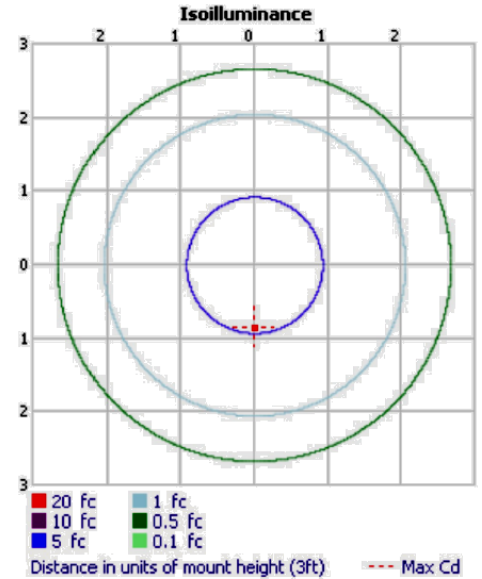
Project Name: _____



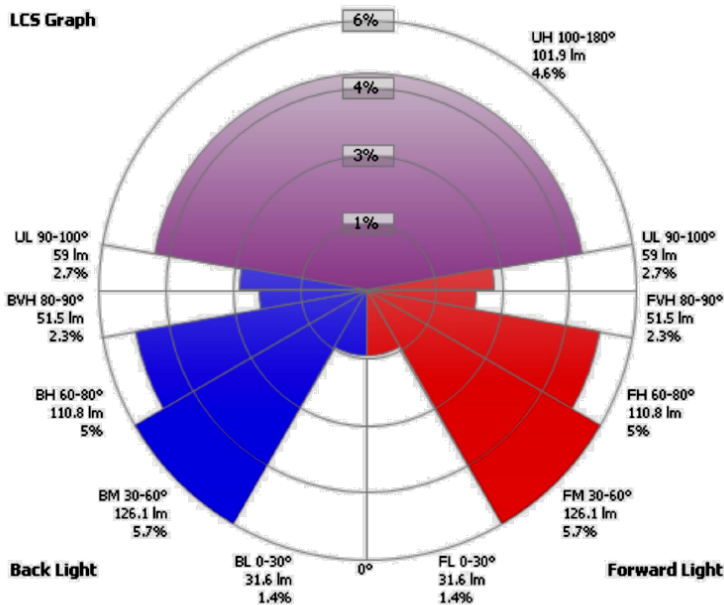
PHOTOMETRIC TECHNICAL DATA

Photometric Performance

Input Watts	Drive Current	Color Temperature	Optics	Lumens	LPW	CRI
15.0	700mA	3000K	louvered	1,401	93	70
		4000K		1,535	102	70
20.0	1050mA	3000K	louvered	2,006	100	70
		4000K		2,197	110	70
20.0	700mA	590nm (amber)	louvered	212	11	70



LCS Graph



Scale = Max LCS %

Trapped Light: 1399 lm, 63.6%

LCS Table

BUG Rating	B1 - U3 - G1	
Forward Light	Lumens	Lumens %
Low(0-30):	31.6	1.4%
Medium(30-60):	126.1	5.7%
High(60-80):	110.8	5%
Very High(80-90):	51.5	2.3%
Back Light		
Low(0-30):	31.6	1.4%
Medium(30-60):	126.1	5.7%
High(60-80):	110.8	5%
Very High(80-90):	51.5	2.3%
Uplight		
Low(90-100):	59.0	2.7%
High(100-180):	101.9	4.6%
Trapped Light:	1,399.0	63.6%

content of specification sheet is subject to change.

N60 W14592 Kaul Avenue
Menomonee Falls, WI 53051

P 877 965 0005
intrigueled.com

Aug-22

Fixture Type: _____

Model Number: _____

Project Name: _____



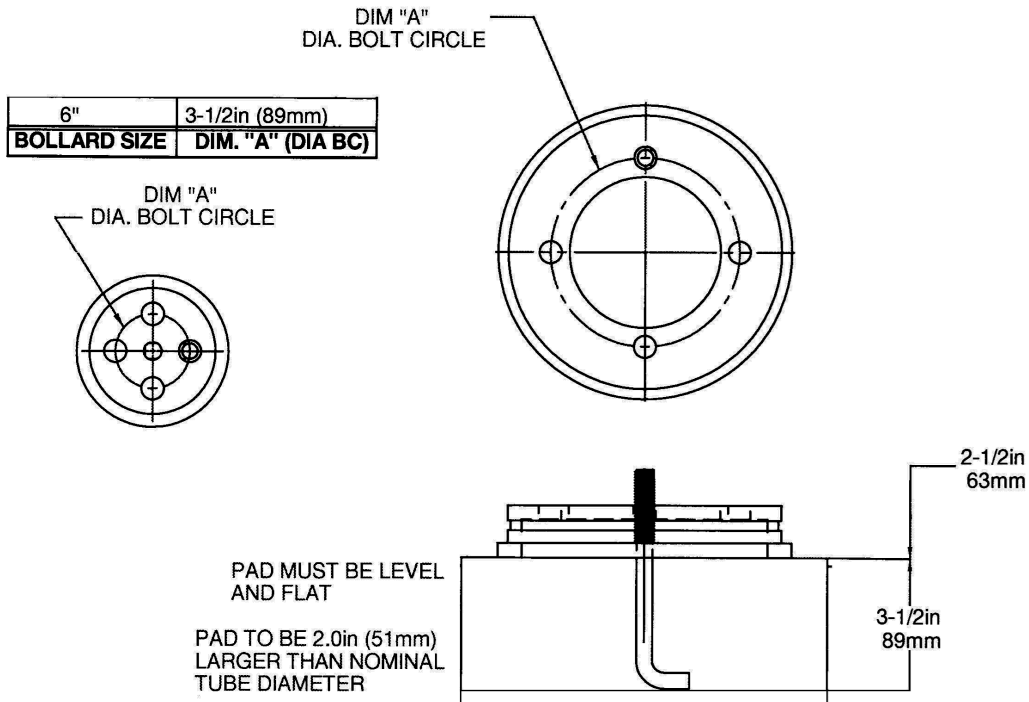
MOUNTING / INSTALLATION DETAIL

NOT TO SCALE ... DIMENSIONAL REFERENCE PURPOSES ONLY

Drill pattern represents standard hold pattern in mounting plate (supplied by Intrigue Lighting).

Hole size and orientation to be determined by installing contractor.

Concrete foundation to be designed (by others) according to local soil conditions.



extruded bollard tube slides over cast aluminum mounting base and secures to base with (4) set screws tightened into machined groove



MOUNTING BASE KIT

cast aluminum mounting base (1)

content of specification sheet is subject to change.

N60 W14592 Kaul Avenue
Menomonee Falls, WI 53051

P 877 965 0005
intrigueled.com

Aug-22

Fixture Type: _____

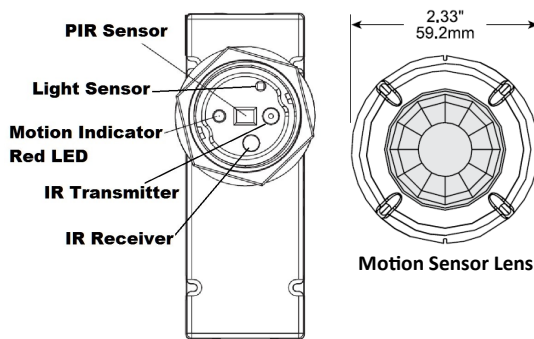
Model Number: _____

Project Name: _____



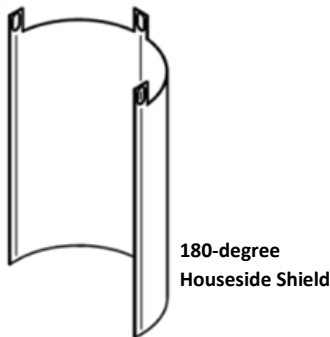
ACCESSORY / OPTION DETAIL

MOTION SENSOR (-MS)



PIR Motion Sensor (120v-277v only) option includes (1) passive infrared (PIR) sensor to detect motion. When motion is not detected for a 3-1/2 minute period, luminaire will automatically dim to 20% power and light. Once motion is detected, luminaire immediately ramps up to 100% power and light output until motion is not detected for another 3-1/2 minute period.

HOUSESIDE SHIELD (-HSS)



Asymmetric light distribution eliminates backlight in unwanted areas. Field adjustable shield constructed of sheet aluminum.

Available options: 180-degree houseside shield (-180HSS)
270-degree houseside shield (-270HSS)

RECESSED RECEPTACLE BOX (-GFI)



Recessed receptacle outlet box mounted 16" on center from bottom of bollard tube. Cast aluminum outlet box internally welded and sealed with gasketed spring-loaded hinge cover. Cover shall be die cast metal construction with finish to match bollard.

Typical supplied cover will be lockable, single-gang weatherproof receptacle cover (Bell #MX1050S or similar); *rated for wet and damp locations when cover is closed*

content of specification sheet is subject to change.

N60 W14592 Kaul Avenue
Menomonee Falls, WI 53051

P 877 965 0005
intrigueled.com

Aug-22

Fixture Type: _____

Model Number: _____

Project Name: _____



SERIES	DIAMETER	MOUNTING	WATTAGE	COLOR (K)	TOP STYLE	LENS	SHADE	OPTIONS	VOLTAGE	HEIGHT	FINISH
ET	6	B							UNV		

MODEL NUMBER DETAIL

SERIES	<input type="checkbox"/>	ET-6-B	Eurotech Architectural LED Bollard / 6.3" Diameter
WATTAGE	<input type="checkbox"/>	15LED	15-watt LED Module (@700mA)
	<input type="checkbox"/>	21LED	21-watt LED Module (@1050mA)
COLOR (K)	<input type="checkbox"/>	3K	3000K
	<input type="checkbox"/>	4K	4000K
	<input type="checkbox"/>	AML	Amber (590nm)
TOP STYLE	<input type="checkbox"/>	B	Beveled Top
	<input type="checkbox"/>	C	Cone Top
	<input type="checkbox"/>	D	Dome Top
	<input type="checkbox"/>	F	Flat Top
	<input type="checkbox"/>	N	None / Flush Top
	<input type="checkbox"/>	P	Finial Point Top
LENS	<input type="checkbox"/>	CA	Clear Acrylic Lens (50% DR)
	<input type="checkbox"/>	OP	Opal Polycarbonate Lens
SHADE	<input type="checkbox"/>	NS	No Shade
	<input type="checkbox"/>	SHD	Spun Aluminum Shade
	<input type="checkbox"/>	SHDFLT	Flat Aluminum Shade
OPTIONS	<input type="checkbox"/>	GFI	Receptacle Box with Cover for GFCI Outlet (<i>outlet by others</i>)
	<input type="checkbox"/>	MS	PIR Motion Sensor (120v-277v only)
	<input type="checkbox"/>	NR	No External Rings
	<input type="checkbox"/>	TRH	Tamper Resistant Hardware
	<input type="checkbox"/>	180HSS	180° Houseside Shield
	<input type="checkbox"/>	270HSS	270° Houseside Shield
VOLTAGE	<input type="checkbox"/>	UNV	Universal Voltage (120v-277v) (50/60Hz); constant current dimmable driver
HEIGHT	<input type="checkbox"/>	30	30" Overall Height
	<input type="checkbox"/>	42	42" Overall Height
FINISH	<input type="checkbox"/>	BLK	Black
	<input type="checkbox"/>	BRZ	Bronze
	<input type="checkbox"/>	GRY	Grey
	<input type="checkbox"/>	SIL	Silver
	<input type="checkbox"/>	VGN	Verde Green
	<input type="checkbox"/>	WHT	White
	<input type="checkbox"/>	CC	Custom Color - Consult Factory

content of specification sheet is subject to change.

N60 W14592 Kaul Avenue
Menomonee Falls, WI 53051

P 877 965 0005
intrigueled.com

Aug-22