

Fixture Type: _____

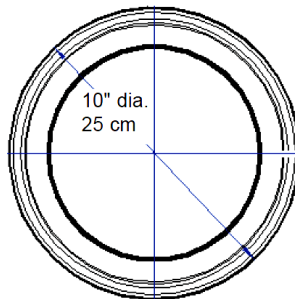
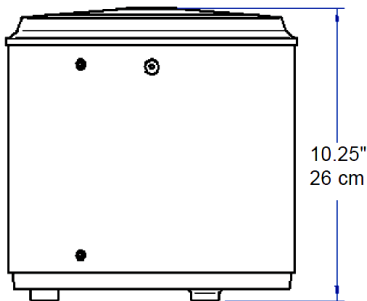
Model Number: _____

Project Name: _____



MIRAGE

Surface Mounted LED Floodlight



General: The Mirage series is an above ground floodlight luminaire, rated for wet locations. The unique knuckle-free design style of the Mirage blends well into landscape and architectural settings while maintaining the beauty of the surroundings. The "Aim-It & Leave-It" installation system eliminates constant re-aiming by allowing the installer to externally lock the optical system, even while fixture is powered on.

Aiming: "Aim-It & Leave-It" feature provides positive lock, preventing optic from being knocked out of position. Set screws in cast mounting base allows housing to rotate for 360° horizontal aiming. External aiming screw provides for vertical $\pm 30^\circ$ aiming of optics, even while fixture is powered on.

Housing: Marine-grade, low-copper content aluminum extruded tubular housing, cast mounting base, and cast lens frame. Stainless steel hardware to protect against corrosion.

LED: 38-watt LED module secured to adjustable aluminum mounting bracket. Aluminum PCB with UV-resistant polycarbonate lens cover. Aluminum cover secured with stainless steel screws (x8).

Heat Sink: Finned heat sink shall be extruded aluminum with electrophoretic deposition and shall be factory sealed to LED module housing.

Driver: Constant current, high efficiency, programmable LED driver; 0-10V dimming standard for a dimming range of 100% down to 0.10%. 120V-277V, 50/60Hz; <20% THD and PF >0.95. Standard internal surge protection 6kV.

Gasketing: Single piece o-ring gasket located at cast lens frame and cast mounting base; gasket keeps moisture and debris out of fixture, while maintaining watertight seal.

Lens: Tempered crowned clear or prismatic glass lens available. Optional rock guard cover casting available to deter vandalism.

Wiring: Includes integral wiring compartment, suitable for a maximum of (4) No. 12 AWG through branch circuit conductors.

Finish: Thermoset, textured polyester powder coat finish. Finishes: black, bronze, grey, white, silver, verde green. Consult factory for custom colors.

Mounting: Standard with 1/2" conduit hole and knockout for thru wiring. Mounting base has (3) holes for 3/8" bolts at 120 degrees. Mounting kit provided with (3) sealing conduit lock nuts and (3) sealing washers for mounting on concrete pad.

Certifications: ETL listed for wet locations (pending)
ANSI/UL 1598, 8750
Operating temperature: -40°C to $+50^\circ\text{C}$

content of specification sheet is subject to change.



N60 W14592 Kaul Avenue
Menomonee Falls, WI 53051

P 877 965 0005 Aug-21
intrigueled.com

Fixture Type: _____

Model Number: _____

Project Name: _____

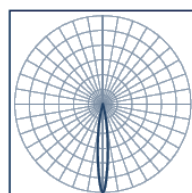


MOUNTING

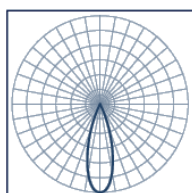
Input Watts	Drive Current (mA)	Color Temperature	Optics	Lumens	LPW	CRI
38.0w	1050mA	3000K	Glass Lens	4,400	116	70
		4000K		4,600	121	

Photometric Diagrams

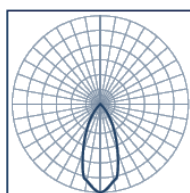
Published luminaire photometric show polar curve through Max. Cd. To obtain an IES file specific to your project, please consult your representative.



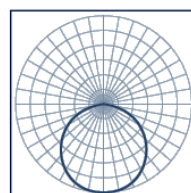
BA 10°



BA 28°



BA 45°



BA 120°



content of specification sheet is subject to change.

N60 W14592 Kaul Avenue
Menomonee Falls, WI 53051

P 877 965 0005
intrigueled.com

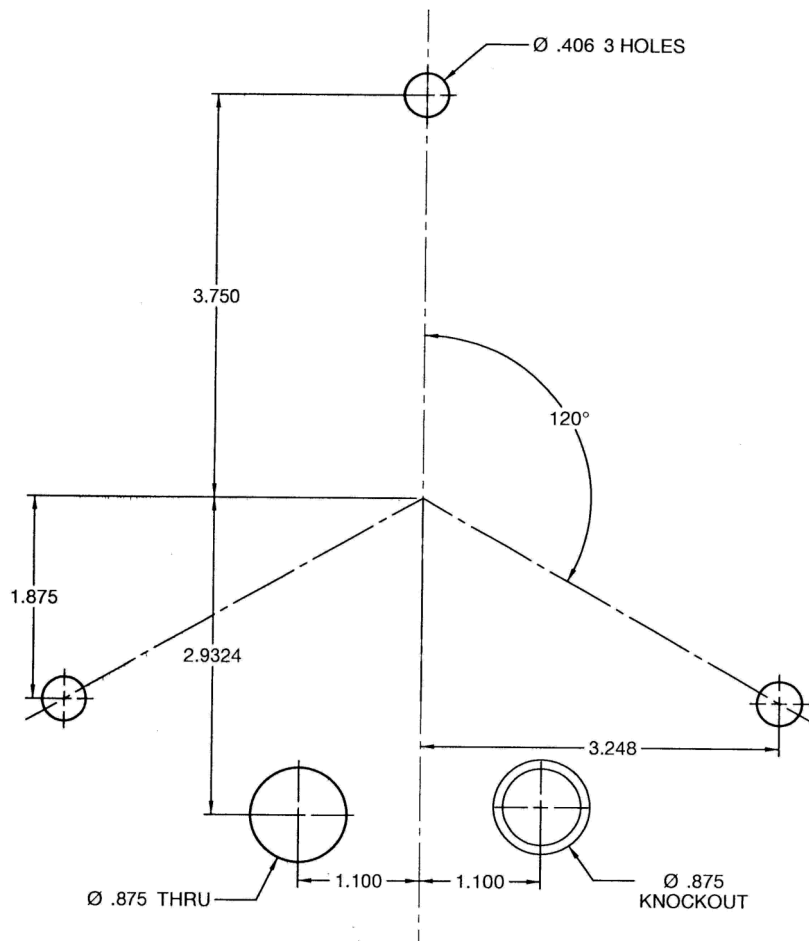
Aug-21

Fixture Type: _____
Model Number: _____
Project Name: _____



MOUNTING

MOUNTING TEMPLATE MG SERIES



content of specification sheet is subject to change.

N60 W14592 Kaul Avenue
Menomonee Falls, WI 53051

P 877 965 0005
intrigueled.com

Aug-21

Fixture Type: _____

Model Number: _____

Project Name: _____



SERIES	WATTAGE	COLOR (K)	BEAM ANGLE	LENS	OPTIONS	VOLTAGE	FINISH
MG	38LED			CGL			

MODEL NUMBER DETAIL

SERIES	<input type="checkbox"/> MG	Mirage Surface Mounted Architectural LED Floodlight
WATTAGE	<input type="checkbox"/> 38LED	38-watt LED Module (@1050mA)
COLOR (K)	<input type="checkbox"/> WHL3K	White LED 3000K
	<input type="checkbox"/> WHL4K	White LED 4000K
BEAM ANGLE (BA)	<input type="checkbox"/> 10D	LED Module with 10-degree beam angle
	<input type="checkbox"/> 28D	LED Module with 28-degree beam angle
	<input type="checkbox"/> 45D	LED Module with 45-degree beam angle
	<input type="checkbox"/> 120D	LED Module with 120-degree beam angle
LENS	<input type="checkbox"/> CGL	Clear Tempered Crowned Glass Lens
	<input type="checkbox"/> PGL	Prismatic Tempered Crowned Glass Lens
OPTIONS	<input type="checkbox"/> RG	Rock Guard Cover
VOLTAGE	<input type="checkbox"/> UNV	Universal Voltage (120v-277v) (50/60Hz); electronic dimmable driver
	<input type="checkbox"/> 347V	347-Volt (50/60Hz); electronic dimmable driver
FINISH	<input type="checkbox"/> BLK	Black
	<input type="checkbox"/> BRZ	Bronze
	<input type="checkbox"/> GRY	Grey
	<input type="checkbox"/> SIL	Silver
	<input type="checkbox"/> VGN	Verde Green
	<input type="checkbox"/> WHT	White
	<input type="checkbox"/> WGF	Woodgrain Finish (tube only) - Consult Factory
	<input type="checkbox"/> CC	Custom Color - Consult Factory



content of specification sheet is subject to change.

N60 W14592 Kaul Avenue
Menomonee Falls, WI 53051

P 877 965 0005
intrigueled.com

Aug-21