

| | | |
|----------|--------------|-------|
| Project: | Catalogue #: | Type: |
| Notes: | | |

Product Description

Commercial-grade, LED strip luminaire. For use with indoor applications where low-cost, but industrial-grade ruggedness is required.

Applications

Coves, Enclosed parking garages, Retail Shelving, Industrial Racks, Utility Areas



Features

- Shallow design
- Surface or suspension mountable
- Available in lengths 24 to 96 inches
- 80+ CRI
- Standard low voltage dimming (0-10v)

Featured Options

- Emergency lighting battery pack
- Speedy hangers
- Aircraft cable set
- Reflectors
- Wireguard
- Lens

Optical System

Standard units are supplied without lens. Optional lenses are available; frosted extruded microgrooved round lens.

Mounting

Mounting holes are provided. This product can be surface or suspension mounted.

Construction

Precision-formed steel housing assembly. Standard downlight aperture is rectangular opening (see options for oval aperture).

Finish

White, pre-painted housing.

Electrical

Long life LEDs coupled with high efficiency drivers provide quality illumination. Rated to deliver L80 performance > 50,000 hours.

Warranty

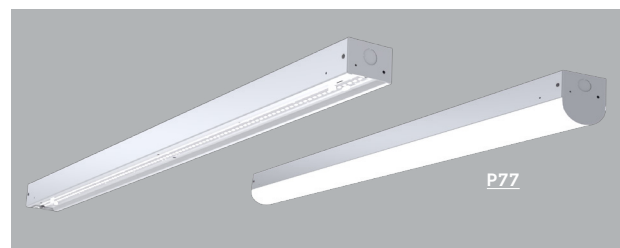
5 year limited warranty. For complete warranty, click here:



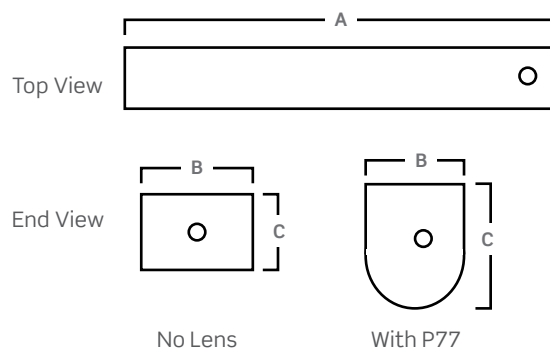
Approvals

- Approved to CSA and UL standards.
- Tested in accordance to IESNA LM-79.
- Suitable for damp locations.
- DesignLights Consortium[®] Qualified.

All configurations may not be DLC qualified. Check www.designlights.org/QPL for qualified configurations.



Dimensions



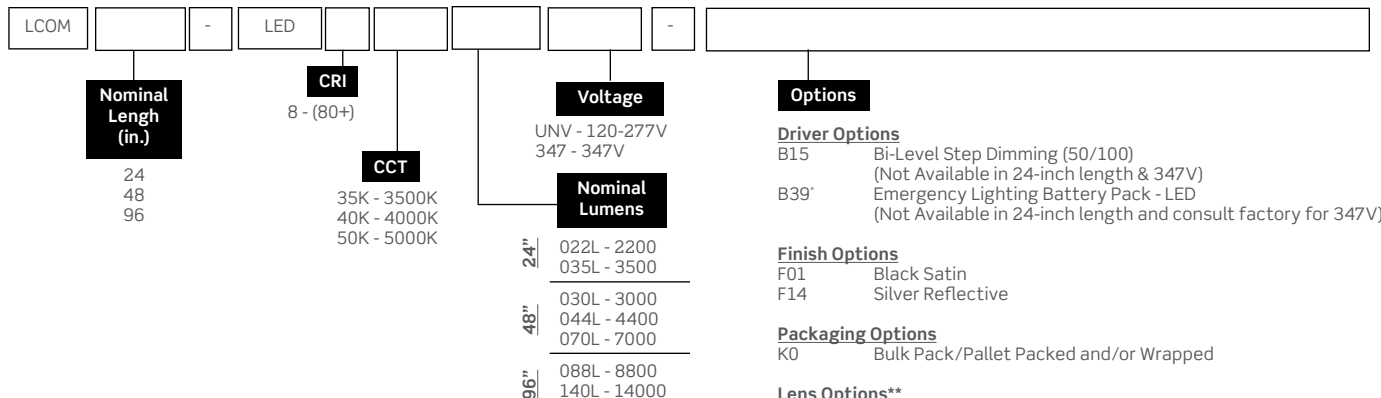
| Size | A | B | C | |
|------|----------|----------|---------|----------|
| | | | No Lens | P77 Lens |
| 24" | 23 1/8" | 2 13/16" | 2" | 3.5" |
| 48" | 45 3/16" | 2 13/16" | 2" | 3.5" |
| 96" | 90 1/4" | 2 13/16" | 2" | 3.5" |

Consult installation guide for exact dimensions.

| | | |
|----------|--------------|-------|
| Project: | Catalogue #: | Type: |
| Notes: | | |

Order Key

EXAMPLE: LCOM48-LED840K044LUNV



Driver Options

- B15 Bi-Level Step Dimming (50/100)
(Not Available in 24-inch length & 347V)
B39 Emergency Lighting Battery Pack - LED
(Not Available in 24-inch length and consult factory for 347V)

Finish Options

- F01 Black Satin
F14 Silver Reflective

Packaging Options

- K0 Bulk Pack/Pallet Packed and/or Wrapped

Lens Options**

- No Lens is Standard,
P77 Round Frosted Extruded Acrylic
(not field installable on standard LCOM, must be included at time of order)

Reflector Options

- R04 Full Cut-off Reflector Solid Full White
R06 Asymmetrical Reflector Solid Full White
R08 Reflector Solid Full White

Wireguard Options

- W5 Wireguard Light Duty Painted
(Wireguard not available when ordered with Decorative Reflector Kit)

Wiring Options

- V08* Flexible Cord Feed (Single Circuit Cord) 6-ft
V68** Microwave Occupancy Sensor (50% Stand-by Dimming level)
V78* 0-10V Flexible Cord 6-ft.
V94 4-ft 5-wire white cord

Wireless Controls Options

To view the controls guide [Click Here](#).

* If fixture is to be switched a 2 circuit cord, V32 is advised

** Lens options are not interchangeable, must be factory installed.

† For pendant mounted applications only. Not for use in surface mount applications.

†† Not to be used with step dimming (B15)

Other options may be available, consult factory. Specifications and data subject to change without notice.

Performance Data

| LED Performance Data | | | | | | |
|----------------------|----------------|------------------|----------|-------|-----------------|----------|
| Size | Nominal Lumens | Delivered Lumens | | Watts | Lumens per Watt | |
| | | No Lens | P77 Lens | | No Lens | P77 Lens |
| 24 | 2200 | 2235 | 2109 | 15 | 152 | 143 |
| | 3500 | 3536 | 3337 | 24 | 149 | 141 |
| 48 | 3000 | 3067 | 2894 | 19 | 159 | 150 |
| | 4400 | 4470 | 4218 | 29 | 152 | 143 |
| | 7000 | 7038 | 6641 | 47 | 149 | 141 |
| 96 | 8800 | 8867 | 8367 | 58 | 152 | 144 |
| | 14000 | 14075 | 13282 | 94 | 149 | 141 |

Values based on 840K with standard lens at 25C

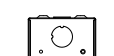
Reflector Options



R04



R06



R08



P77R04



P77R06



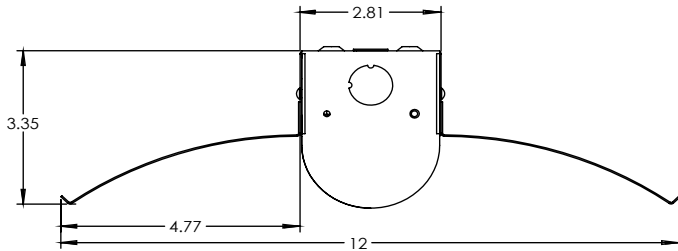
P77R08

| | | |
|----------|--------------|-------|
| Project: | Catalogue #: | Type: |
| Notes: | | |

Mounted Accessories (Ordered Separately)

| | |
|----------|---|
| KIT00001 | Chain Set (2) 4ft w/ S-hooks.M10 |
| KIT00002 | Speedy Hangers (2).M23 |
| KIT00003 | Stem & Canopy Set 3/8"IP (2) 4ft.M26 |
| KIT00043 | Aircraft Cable & Canopy Set (2) 4ft.M48 (Cord not included with the kit) |
| KIT00044 | Stem & Canopy Set Sloped Ceilings (2) 3ft.M29 |
| KIT00045 | Stem & Canopy Set Sloped Ceilings (2) 4ft.M29 |
| KIT00046 | Stem & Canopy Set Sloped Ceilings (2) 6ft.M29 |
| KIT00047 | Stem & Canopy Set 3/8"IP (2) 2ft.M26 |
| KIT00048 | Stem & Canopy Set 3/8"IP (2) 1ft.M26 |
| KIT00050 | Stem & Canopy Set 3/8"IP (2) 3ft.M26 |
| KIT00053 | Stem & Canopy Set 3/8"IP (2) 6ft.M26 |

Decorative Reflector Kits* (Ordered Separately)



Solid LCOM Reflector Kit

KIT00285 - 2 FT.
KIT00271 - 4 FT.
KIT00277 - 8 FT.

Perforated LCOM Reflector Kit

KIT00286 - 2 FT.
KIT00272 - 4 FT.
KIT00278 - 8 FT.

Straight Slotted LCOM Reflector Kit

KIT00287 - 2 FT.
KIT00273 - 4 FT.
KIT00279 - 8 FT.

Angled Slotted LCOM Reflector Kit

KIT00288 - 2 FT.
KIT00274 - 4 FT.
KIT00280 - 8 FT.

* The below Decorative reflector kits are designed specifically for P77. Wireguard (W5) not available when ordered with Decorative Reflector Kit



KIT00271 Solid



KIT00272 Perforated



KIT00273 Straight Slots

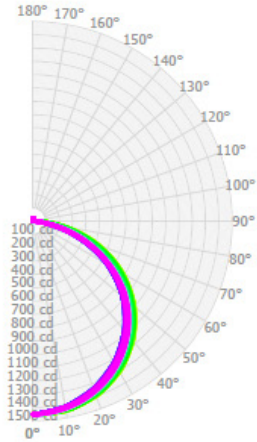


KIT00274 Angled Slots

| | | |
|----------|--------------|-------|
| Project: | Catalogue #: | Type: |
| Notes: | | |

Photometrics

IES File: **LCOM48-LED840K044LUNV**
 Lumens: **4468**
 Wattage: **33.5**
 Efficacy: **133**



Zonal Lumen Summary

| Zone | Lumens | %Fixture |
|---------------|--------|----------|
| 0.0° - 30.0° | 1144 | 25.6% |
| 0.0° - 40.0° | 1893 | 42.4% |
| 0.0° - 60.0° | 3427 | 76.7% |
| 0.0° - 90.0° | 4396 | 98.4% |
| 0.0° - 110.0° | 4406 | 98.6% |
| 0.0° - 130.0° | 4426 | 99.1% |
| 0.0° - 150.0° | 4450 | 99.6% |
| 0.0° - 170.0° | 4465 | 100.0% |
| 0.0° - 180.0° | 4468 | 100.0% |

Coefficients of Utilization

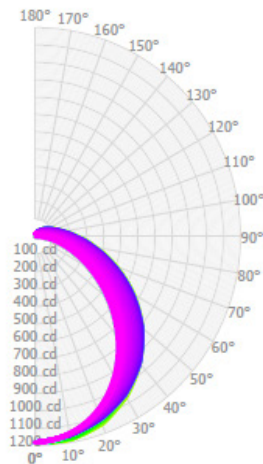
| pc | 80% | | | 70% | | | 50% | | |
|----|-----|-----|-----|-----|-----|-----|-----|-----|-----|
| | 70% | 50% | 30% | 70% | 50% | 30% | 70% | 50% | 30% |
| pw | 119 | 119 | 119 | 116 | 116 | 116 | 110 | 110 | 110 |
| 1 | 108 | 103 | 99 | 105 | 101 | 97 | 100 | 96 | 93 |
| 2 | 98 | 90 | 83 | 95 | 88 | 81 | 90 | 84 | 79 |
| 3 | 89 | 79 | 70 | 87 | 77 | 69 | 82 | 74 | 67 |
| 4 | 82 | 69 | 60 | 79 | 68 | 60 | 75 | 65 | 58 |
| 5 | 75 | 62 | 53 | 73 | 61 | 52 | 69 | 58 | 51 |
| 6 | 69 | 56 | 46 | 67 | 55 | 46 | 63 | 53 | 45 |
| 7 | 64 | 50 | 41 | 62 | 49 | 41 | 59 | 48 | 40 |
| 8 | 59 | 46 | 37 | 58 | 45 | 37 | 55 | 44 | 36 |
| 9 | 56 | 42 | 34 | 54 | 41 | 33 | 51 | 40 | 33 |
| 10 | 52 | 39 | 31 | 51 | 38 | 30 | 48 | 37 | 30 |

Average Luminance Table (cd/m2) CP Summary

| | 0.00° | 45.00° | 90.00° |
|--------|-------|--------|--------|
| 0.00° | 16617 | 16617 | 16617 |
| 45.00° | 16399 | 13914 | 13185 |
| 55.00° | 15810 | 12900 | 12031 |

Effective Floor Cavity Reflectance: 20%

IES File: **LCOM48-LED840K044LUNV-P77**
 Lumens: **4016**
 Wattage: **33.5**
 Efficacy: **120**



Zonal Lumen Summary

| Zone | Lumens | %Fixture |
|---------------|--------|----------|
| 0.0° - 30.0° | 916 | 22.8% |
| 0.0° - 40.0° | 1496 | 37.2% |
| 0.0° - 60.0° | 2643 | 65.8% |
| 0.0° - 90.0° | 3633 | 90.5% |
| 0.0° - 110.0° | 3856 | 96.0% |
| 0.0° - 130.0° | 3955 | 98.5% |
| 0.0° - 150.0° | 3999 | 99.6% |
| 0.0° - 170.0° | 4014 | 100.0% |
| 0.0° - 180.0° | 4016 | 100.0% |

Coefficients of Utilization

| pc | 80% | | | 70% | | | 50% | | |
|----|-----|-----|-----|-----|-----|-----|-----|-----|-----|
| | 70% | 50% | 30% | 70% | 50% | 30% | 70% | 50% | 30% |
| pw | 117 | 117 | 117 | 113 | 113 | 113 | 106 | 106 | 106 |
| 1 | 105 | 99 | 95 | 101 | 96 | 92 | 94 | 90 | 87 |
| 2 | 95 | 86 | 79 | 91 | 83 | 76 | 85 | 78 | 72 |
| 3 | 86 | 75 | 67 | 83 | 73 | 65 | 77 | 68 | 62 |
| 4 | 79 | 66 | 57 | 76 | 64 | 56 | 70 | 61 | 53 |
| 5 | 72 | 59 | 50 | 70 | 57 | 49 | 64 | 54 | 47 |
| 6 | 67 | 53 | 44 | 64 | 52 | 43 | 60 | 49 | 41 |
| 7 | 62 | 48 | 39 | 60 | 47 | 39 | 55 | 44 | 37 |
| 8 | 58 | 44 | 35 | 55 | 43 | 35 | 52 | 41 | 33 |
| 9 | 54 | 40 | 32 | 52 | 39 | 31 | 48 | 37 | 30 |
| 10 | 50 | 37 | 29 | 49 | 36 | 29 | 45 | 35 | 28 |

Average Luminance Table (cd/m2) CP Summary

| | 0.00° | 45.00° | 90.00° |
|--------|-------|--------|--------|
| 0.00° | 13505 | 13505 | 13505 |
| 45.00° | 10517 | 12764 | 14276 |
| 55.00° | 9093 | 12530 | 14733 |
| 65.00° | 7578 | 12781 | 15728 |
| 75.00° | 6031 | 14788 | 18871 |
| 85.00° | 3243 | 29701 | 39067 |

Effective Floor Cavity Reflectance: 20%