

Project:	Catalogue #:	Type:
Notes:		

Product Description

Specification-grade, LED modular linear lighting luminaire. For use with indoor applications where continuous linear lighting is desired such as perimeter lighting applications. This luminaire is suitable for surface, suspended or wall-mounting individually or in continuous rows while offering an optional uplight component with an internal baffle that separates uplight and downlight components.

Applications

Classrooms, Libraries, Office Areas, Retail Stores, Supermarkets



Features

- Available in pendant, surface, recessed and wall-mounting configurations
- Clear prismatic acrylic diffuser
- Continuous row-mounting capability
- Available in lengths from 24 to 96 inches
- Optional metal straight blade and parabolic baffles
- 80+ CRI
- Standard low voltage dimming (0-10v)

Featured Options

- Emergency lighting battery pack
- Optional lenses and louvers, see product selection
- Aircraft Cable & Power Canopy Set
- Stem & canopy sets
- Slots for uplighting
- Consult factory for other finishes

Optical System

Internal baffle separates uplight and downlight components. Standard diffuser is a clear, prismatic pattern #12, acrylic lens. Optional shielding is available, see product key for alternate configurations. Metal baffle louvers are available with straight or parabolic blades, in a variety of sizes and finishes.

Mounting

Knockout is provided for stem-mounting (1/2 inch NPT rigid pipe). Optional stem and canopy sets are available in multiples of six inches.

Construction

Die-formed and spot-welded, code gauge steel housing assembly. Spot-welded for rigidity and clean appearance. Diffuser or baffle lays in directly on to fixture flange on two sides. This luminaire is suitable for row-mounting. Flattened knockouts are provided on ends for through wiring. Regressed bottom lip available for added rigidity and aesthetic appeal.

Finish

White, polyester powder painted housing.

Electrical

Long life LED's coupled with high efficiency drivers provide quality illumination. Rated to deliver L80 performance > 50,000 hours. Supplied with dimmable drivers (0-10v). System efficacy of at least 100 lumens per watt for standard units.

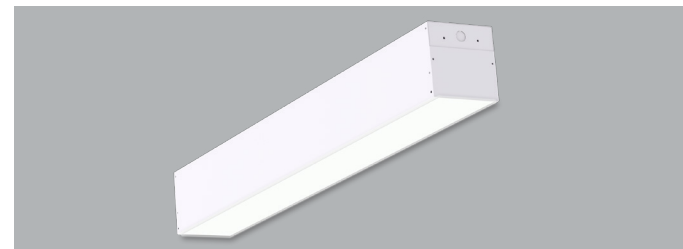
Warranty

5 year limited warranty. For complete warranty, click here:

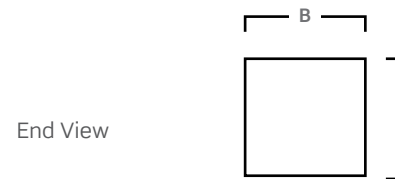
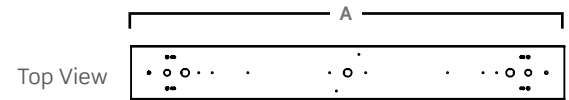


Approvals

- Approved to CSA/UL standards



Dimensions



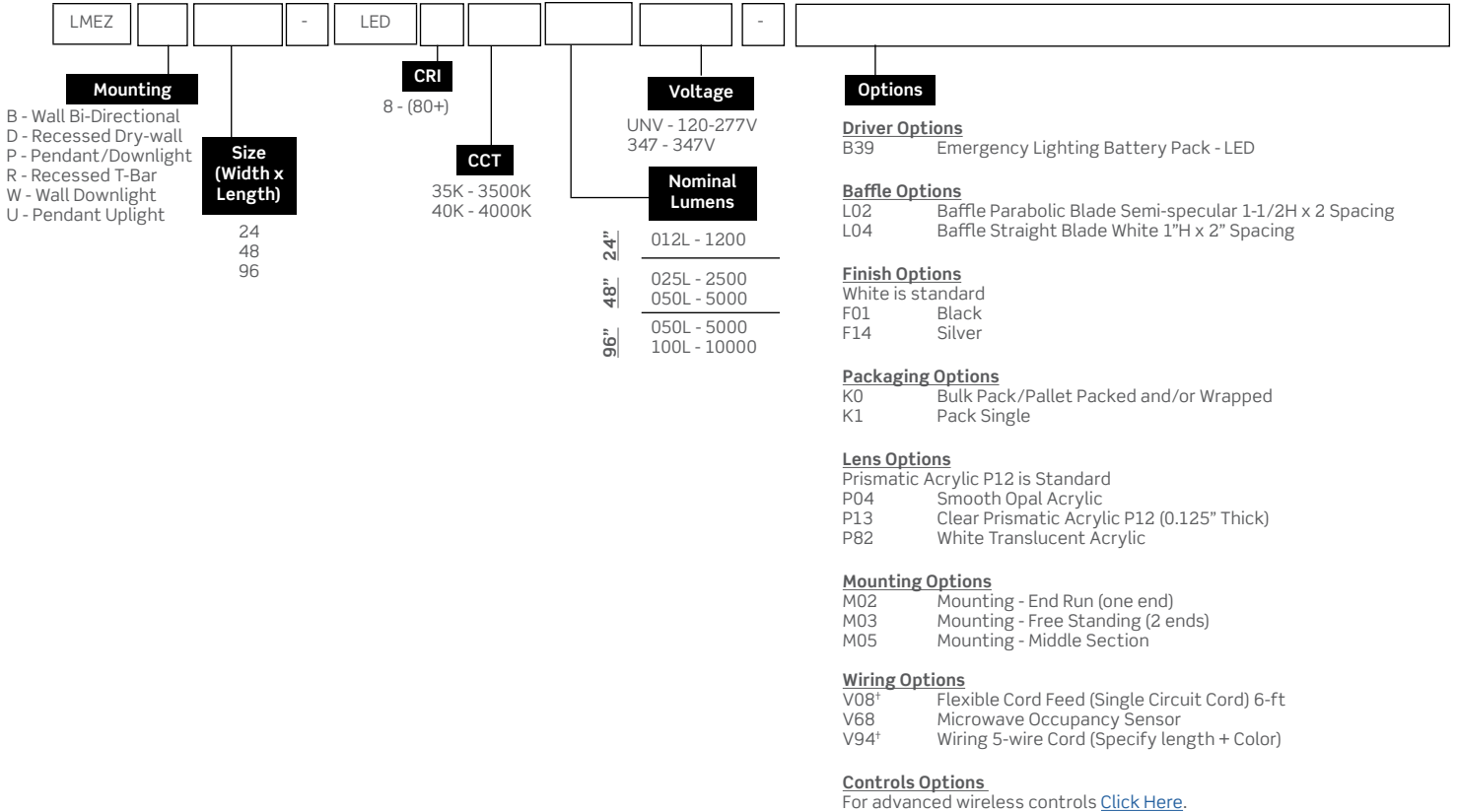
Size	A	B	C
24	24"	6"	6"
48	48"		
96	96"		

View page 3 for mounting option dimensions. Consult installation guide for exact dimensions.

Project:	Catalogue #:	Type:
Notes:		

Order Key

EXAMPLE: LMEZR48-LED835K025LUNV-L02



* For pendant mounted applications only. Not for use in surface mount applications.

Other options may be available, consult factory. Specifications and data subject to change without notice.

Performance Data

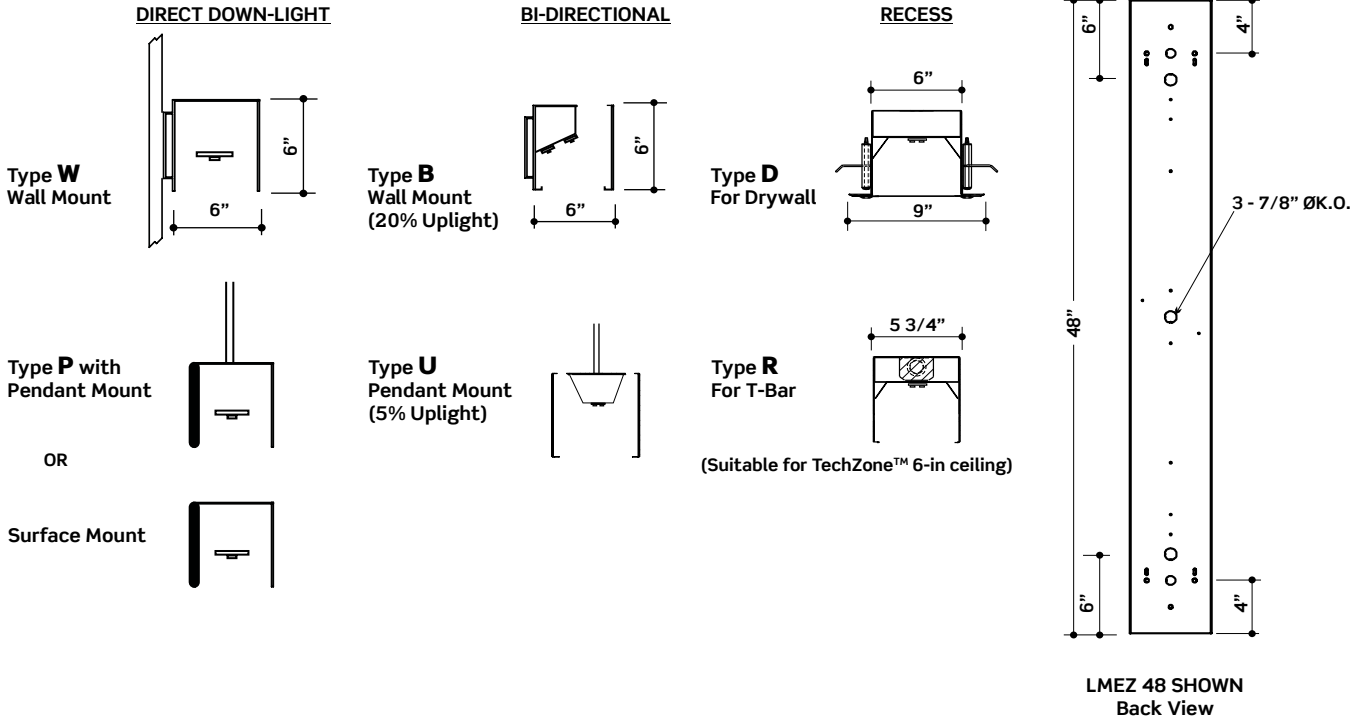
Size (Standard Downlight Only)	Nominal Lumens	Watts
24"	1200	19
48"	2500	38
	5000	76
96"	5000	76
	10000	152

Mounted Accessories (Ordered Separately)	
KIT00003	Stem & Canopy Set 3/8"IP (2) 4ft.M26
KIT00043	Aircraft Cable & Canopy Set (2) 4ft.M48 (Cord not included with the kit)
KIT00044	Stem & Canopy Set Sloped Ceilings (2) 3ft.M29
KIT00045	Stem & Canopy Set Sloped Ceilings (2) 4ft.M29
KIT00046	Stem & Canopy Set Sloped Ceilings (2) 6ft.M29

Project:	Catalogue #:	Type:
Notes:		

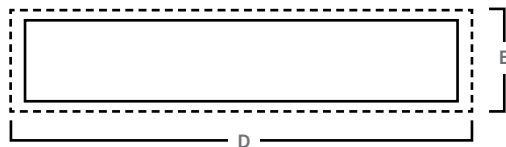
Mounting Option Dimensions

Configuration



Mounting Option D: Recessed Dry-wall

Top View



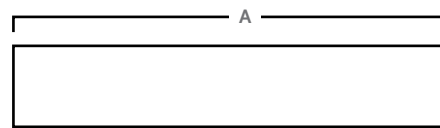
End View



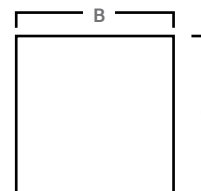
Size	A	B	C
24	26"	9"	6"
48	50"		
96	98"		

Mounting Option R: Recessed T-Bar

Top View



End View



Size	A	B	C
24	23.75"	5.75"	6"
48	47.75"		
96	95.75"		