



RBC6

6" BUILDERS PLUS LED COMMERCIAL FIXED WALL WASH

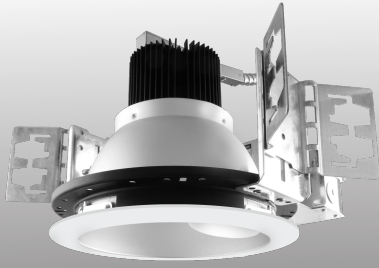
PROJECT: _____

MODEL #: _____

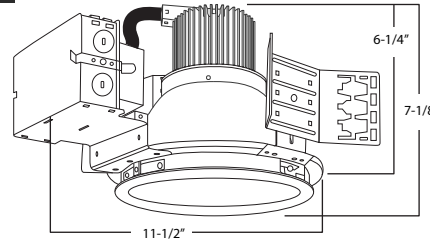
LOCATION: _____

CONTACT: _____

6" BUILDERS PLUS COMMERCIAL WALL WASH



DIMENSIONS



USE OF PRODUCT

The 6" Builders Plus LED Commercial Fixed Wall Wash series is the ideal product for energy efficient lighting in Non-IC New Construction commercial applications. Available in three color temperatures and lumen packages. Deep cone reflector designed for anti-glare purposes.

BUILDERS PLUS FEATURES

Lumen Selectable:
 LS1- 660 lm, 820 lm, 995 lm
 LS2- 1120 lm, 1390 lm, 1750 lm
 LS4- 2055 lm, 2555 lm, 3130 lm
 Color Temperature Selectable: 3000K, 3500K, 4000K
 Locking mechanism optional
 Color Rendering Index: 84+ CRI
 Optical Lens: LS1(70° standard) LS2(75° standard) LS4(75° standard)
 LED Life: 50,000 Hours
 Driver Info: 120-277V; 50/60 Hz
 Operating Temperature: -30°C - 40°C
 Warranty: 5 year limited warranty

LED ENGINE

LED engine available in 3000K, 3500K, 4000K in 84+ CRI. Color temperature may be modified in field or preset with locking mechanism. LED Mounted to aluminum heat sink for maximum life output and thermal management.

FRAME CONSTRUCTION

Architectural frame includes butterfly brackets to accommodate C channel or flat bar hangers to tie down to ceiling grids. Junction box mounted to frame for easy wire access and for driver installation/replacement.

DIMMING

LED driver accommodates 120-277V input with 0-10V dimming protocol. Fixture available in three selectable lumen packages. **LS1**(660, 820, 995 lm), **LS2**(1120, 1390, 1750 lm), **LS4**(2055, 2555, 3130 lm). Lumens may be modified in field or optional lumen locking mechanism available upon request.

TRIM

Self-flanged spun aluminum reflector with frosted lens to shield direct view from LEDs. Reflector available in haze finish with white trim.

EMERGENCY BATTERY

Optional emergency battery available for a minimum of 90 minutes with both integral or remote test switch in 800 delivered lumens.

INSTALLATION

Non-IC housing. Insulation must be kept at least 3" away from fixture.

LABELS/COMPLIANCE

-cUL Listed
 -Energy Star
 -Title 24
 -Wet location

ORDERING INFO

RBC6			UNV	W	H	W	FN	
Series	Lumens	Color Temperature	Voltage	Aperture type	Reflector	Trim	Frame	Frame Accessories
RBC6 - 6" Builder Plus Commercial Downlight	LS1¹ - Lumen Selectable (660, 820, 995 lm) LL6 - Lumens Locked at 660 lm LL8 - Lumens Locked at 820 lm LL9 - Lumens Locked at 995 lm LS2² - Lumen Selectable (1120, 1390, 1750 lm) LL11 - Lumens Locked at 1120 lm LL13 - Lumens Locked at 1390 lm LL17 - Lumens Locked at 1750 lm LS4³ - Lumen Selectable (2055, 2555, 3130 lm) LL20 - Lumens Locked at 2055 lm LL25 - Lumens Locked at 2555 lm LL31 - Lumens Locked at 3130 lm	CTS - Color Temperature Selectable CT30 - Locked at 3000K CT35 - Locked at 3500K CT40 - Locked at 4000K	UNV - 120-277V	W - Wall Wash	H - Haze	W - White	FN - New Construction	C - C Channel bar hanger B - Flat bar hanger WJ - Wood Joist

Options

EB8 - Emergency Battery with Integral Switch (800 Lumens)
 ER8 - Emergency Battery with Remote Switch (800 Lumens)

Notes
 1. Lumen selectable between 660, 820, 995 lm. Lumens may be modified in field.
 2. Lumen selectable between 1120, 1390, 1750 lm. Lumens may be modified in field.
 3. Lumen selectable between 2055, 2555, 3130 lm. Lumens may be modified in field.
 4. Compatible with LS4 module only.



www.rayonlighting.com
 info@rayonlighting.com

tel: 323.446.2626
 fax: 323.446.2606

Specification and product availability subject to change without notice

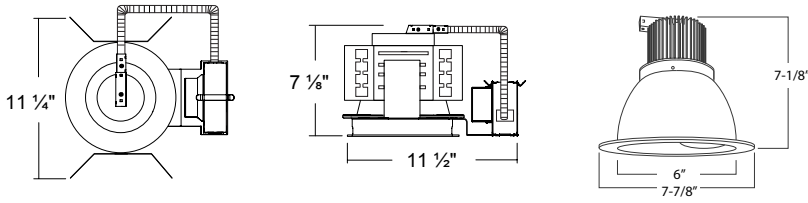
PROJECT: _____

MODEL #: _____

LOCATION: _____

CONTACT: _____

DIMENSIONS

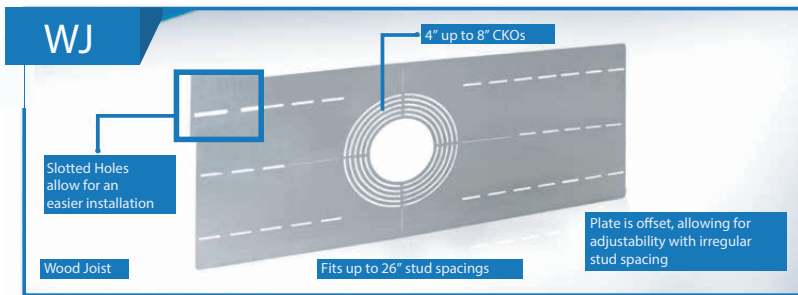


WATT/LUMENS CHART

	Watt	Lumens	CRI	Switch
LS1	16W	660 lm	84+	Low
	20W	820 lm	84+	Medium
	25W	995 lm	84+	High
LS2	22W	1120 lm	84+	Low
	28W	1390 lm	84+	Medium
	36W	1750 lm	84+	High
LS4	39W	2055 lm	84+	Low
	50W	2555 lm	84+	Medium
	69W	3130 lm	84+	High

Performance based on 3500K

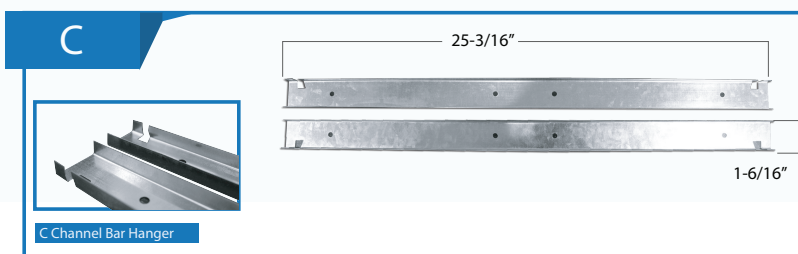
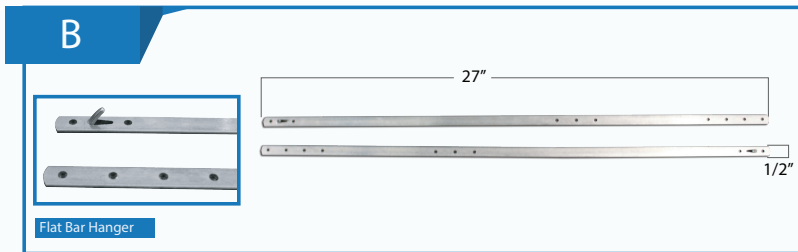
FRAME ACCESSORIES



LIST OF COMPATIBLE DIMMERS

(120/277V 0-10 DIMMING)

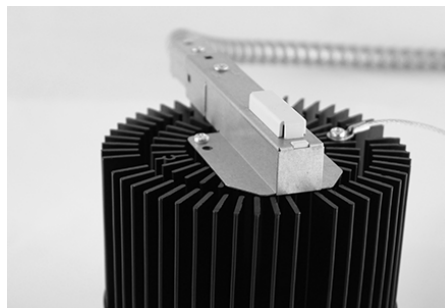
MFR.	MODEL#	DIMMING RATE
Lutron	NFTV	1-100%
Lutron	NTSTV-DV	1-100%
Legrand	CD4FBLW	1-100%
Leviton	1P710-DL	1-100%



LUMEN AND COLOR TEMP. LOCK MECHANISM COVER



Lumen selectable locking mechanism cover



Color Temperature selectable locking mechanism cover