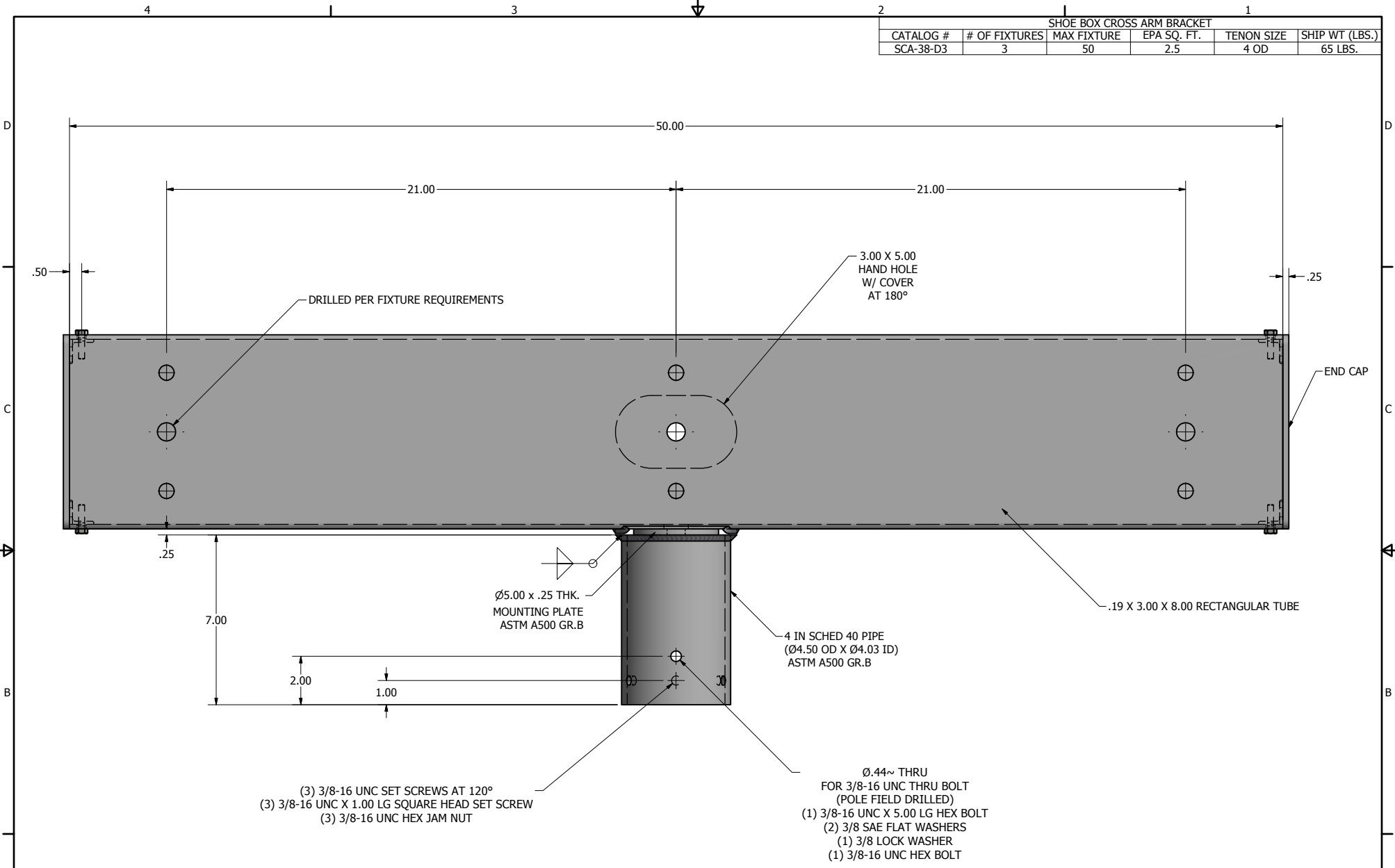


SHOE BOX CROSS ARM BRACKET					
CATALOG #	# OF FIXTURES	MAX FIXTURE	EPA SQ. FT.	TENON SIZE	SHIP WT (LBS.)
SCA-38-D3	3	50	2.5	4 OD	65 LBS.



- (3) 3/8-16 UNC SET SCREWS AT 120°
- (3) 3/8-16 UNC X 1.00 LG SQUARE HEAD SET SCREW
- (3) 3/8-16 UNC HEX JAM NUT

- Ø.44~ THRU FOR 3/8-16 UNC THRU BOLT (POLE FIELD DRILLED)
- (1) 3/8-16 UNC X 5.00 LG HEX BOLT
- (2) 3/8 SAE FLAT WASHERS
- (1) 3/8 LOCK WASHER
- (1) 3/8-16 UNC HEX BOLT

**FINISH: BRACKETS SHALL HAVE A POLYESTER POWDER COAT FINISH IN A STANDARD COLOR.**

<p>HAND HOLE</p>	DRAWN: G. FOSSETT	10/10/2016
	CHECKED	
	REVISION:	DATE:
	APPROVED:	
	QUOTE:	
	S.O.#	
REF:	SCALE: NONE	

**UNITED LIGHTING STANDARDS**  
 A DWH COMPANY

23171 Groesbeck Hwy.  
 Warren, MI 48089  
 P: (586) 774-5650 | F: (586) 774-5706  
[www.unitedlightingstandards.com](http://www.unitedlightingstandards.com)

SOME GEOGRAPHICAL AREAS HAVE SPECIAL WIND CONDITIONS THAT CAN CREATE WIND INDUCED VIBRATIONS CAUSING A FATIGUE PROBLEM. NO METHOD HAS YET BEEN FOUND FOR PREDICTING DESTRUCTIVE LIGHTING POLE VIBRATION. THESE CONDITIONS ARE UNIQUE AND CANNOT BE GUARANTEED AGAINST, AND ARE THE RESPONSIBILITY OF A LOCAL SITE ENGINEER.		
TITLE:		
CATALOG:		
DWG NO: SCA-38-D3	SIZE: C	SHEET 1 OF 1