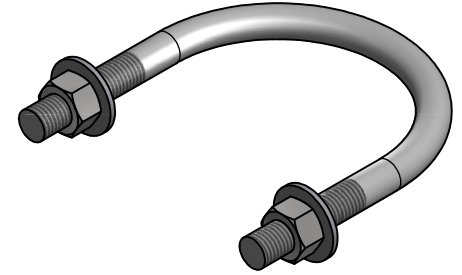
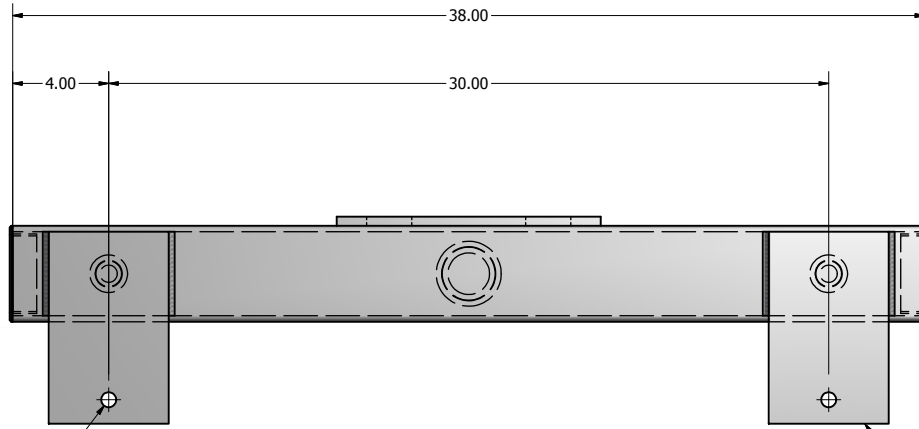


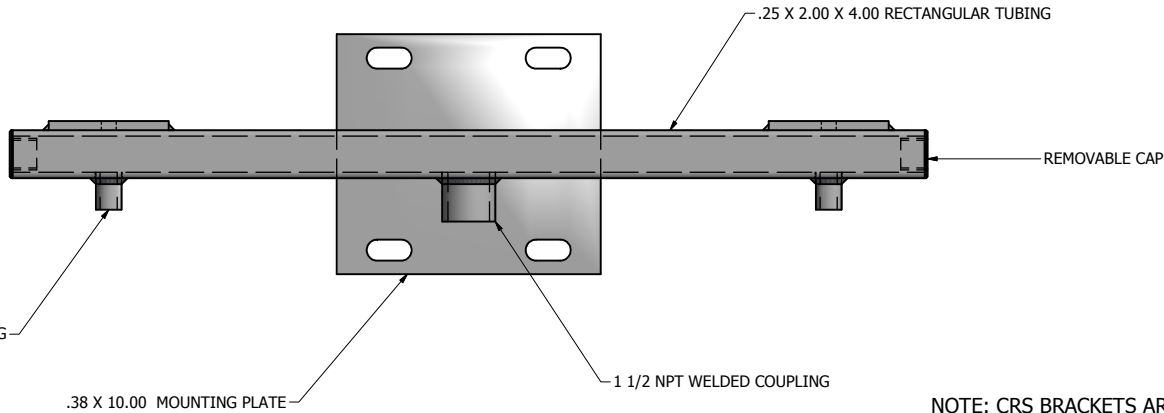
CRS - SIDE MOUNTED CROSS ARM SPECIFICATIONS			
CATALOG #	FIXTURE QTY	EPA (SQ FT.)	WEIGHT (LBS.)
CRS-02	2	1.9	49



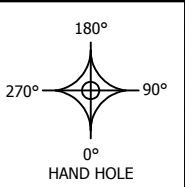
NOTE: CRS BRACKETS FASTENED TO POLE USING U BOLTS

DRILLED PER FIXTURE REQUIREMENTS

.38 X 5.00 X 8.00 MOUNTING PLATE



NOTE: CRS BRACKETS ARE DESIGNED TO BE SIDE MOUNTED TO THE POLE SHAFT USING U-BOLTS. U-BOLTS & MOUNTING PLATE SIZING DETERMINED BY SHAFT SIZE. BRACKETS ARE FINISHED TO MATCH THE POLE.



DRAWN: M. HARVALA	2/9/2015
CHECKED	
REVISION:	DATE:
APPROVED:	
QUOTE:	
S.O.#	
REF:	SCALE: NONE

UNITED LIGHTING STANDARDS
A DWH COMPANY

23171 Groesbeck Hwy.
 Warren, MI 48089
 P: (586) 774-5650 | F: (586) 774-5706
www.unitedlightingstandards.com

SOME GEOGRAPHICAL AREAS HAVE SPECIAL WIND CONDITIONS THAT CAN CREATE WIND INDUCED VIBRATIONS CAUSING A FATIGUE PROBLEM. NO METHOD HAS YET BEEN FOUND FOR PREDICTING DESTRUCTIVE LIGHTING POLE VIBRATION. THESE CONDITIONS ARE UNIQUE AND CANNOT BE GUARANTEED AGAINST, AND ARE THE RESPONSIBILITY OF A LOCAL SITE ENGINEER.		
TITLE:		
CATALOG:		
DWG NO: CRS-02	SIZE: C	SHEET 1 OF 1