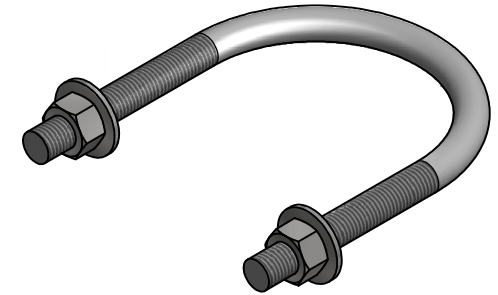
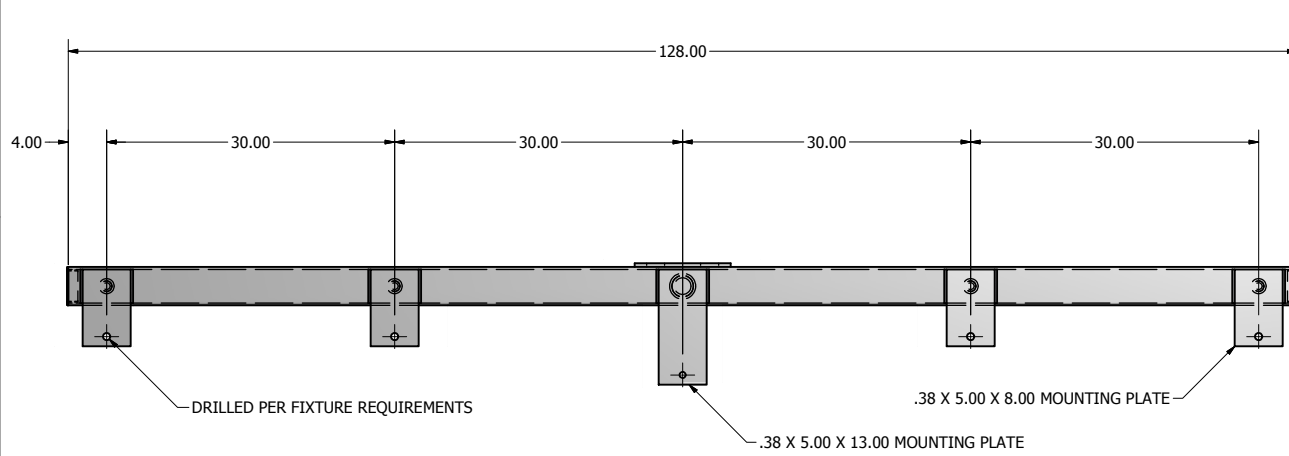
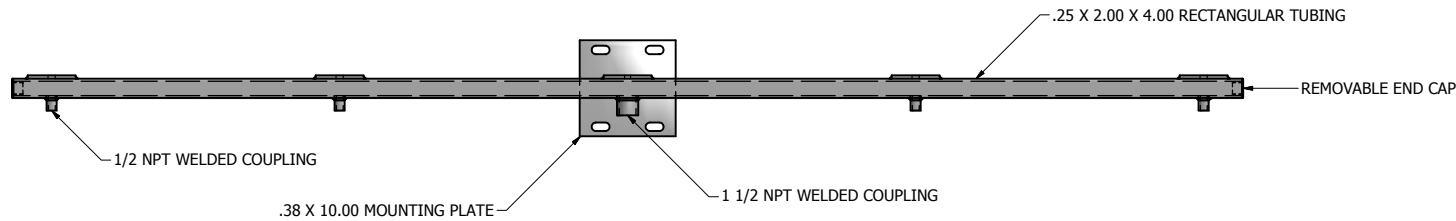


CRS - SIDE MOUNTED CROSS ARM SPECIFICATIONS			
CATALOG #	FIXTURE QTY	EPA (SQ FT.)	WEIGHT (LBS.)
CRS-05	5	4.00	131



NOTE: CRS BRACKETS FASTENED TO POLE USING U BOLTS



NOTE: CRS BRACKETS ARE DESIGNED TO BE SIDE MOUNTED TO THE POLE SHAFT USING U-BOLTS. U-BOLTS & MOUNTING PLATE SIZING DETERMINED BY SHAFT SIZE. BRACKETS ARE FINISHED TO MATCH THE POLE.

	DRAWN: L. GRUNIS	3/20/2019
	CHECKED	
	REVISION:	DATE:
	APPROVED:	
	QUOTE:	
	S.O.#	
REF:	SCALE: NONE	

**UNITED LIGHTING STANDARDS**  
 A DWH COMPANY

23171 Groesbeck Hwy.  
 Warren, MI 48089  
 P: (586) 774-5650 | F: (586) 774-5706  
[www.unitedlightingstandards.com](http://www.unitedlightingstandards.com)

SOME GEOGRAPHICAL AREAS HAVE SPECIAL WIND CONDITIONS THAT CAN CREATE WIND INDUCED VIBRATIONS CAUSING A FATIGUE PROBLEM. NO METHOD HAS YET BEEN FOUND FOR PREDICTING DESTRUCTIVE LIGHTING POLE VIBRATION. THESE CONDITIONS ARE UNIQUE AND CANNOT BE GUARANTEED AGAINST, AND ARE THE RESPONSIBILITY OF A LOCAL SITE ENGINEER.

TITLE:

CATALOG:

DWG NO: CRS-05

SIZE: C SHEET 1 OF 1