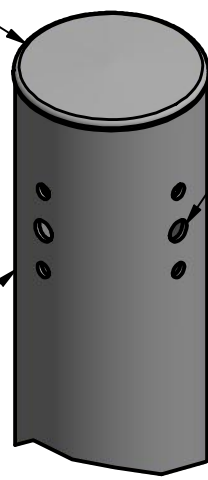


REMOVABLE CAP

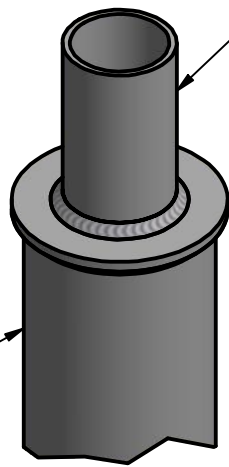


DRILL PER FIXTURE REQUIREMENTS:
D1 - DRILLED FOR 1 FIXTURE
D2 - DRILLED FOR 2 FIXTURES AT 90° OR 180°
D3 - DRILLED FOR 3 FIXTURES AT 90° OR 120°
D4 - DRILLED FOR 4 FIXTURES

POLE SHAFT

DRILLED MOUNT OPTIONS

TENON MOUNT OPTIONS:
T2- Ø2.38 OD X 4.00 LG
T2.5- Ø2.88 OD X 4.00 LG
T3- Ø3.00 OD X 5.00 LG
T4- Ø4.00 OD X 6.00 LG

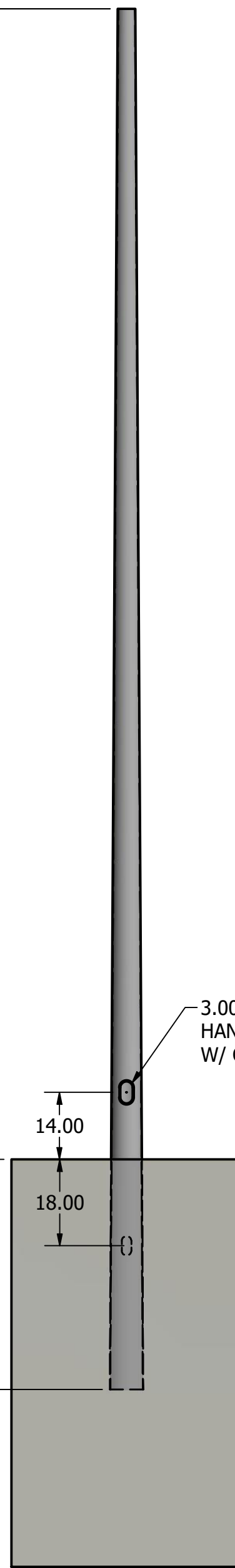


POLE SHAFT

TENON MOUNT OPTIONS

240.00
(20')

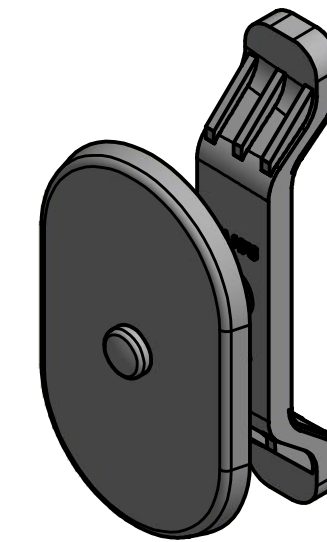
288.00
(24')



3.00 X 5.00
HAND HOLE
W/ COVER

FINISH GRADE

POLE DETAIL

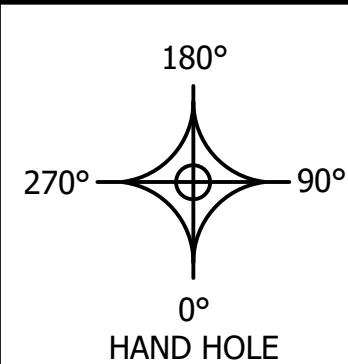


3.00 X 5.00 HAND HOLE COVER

NOTE: COAL TAR EPOXY COATING AVAILABLE AS AN OPTION FOR EMBEDDED PORTION PLUS 6 IN. OF THE POLE SHAFT.

POLE SPECIFICATIONS					
NO.	COMPONENT	ASTM DESIGNATION	MIN. YIELD (P.S.I)		
1.	POLE SHAFT	A-595 GR. A	55,000		
2.	BASE PLATE	A36	36,000		
3.	ANCHOR BOLTS	F1554 GR. 55	55,000		
4.	GALVANIZED HARDWARE	A153	-		
FINISH SPECIFICATIONS					
POLES SHALL HAVE A POLYESTER POWDER COAT FINISH IN A STANDARD COLOR.					
POLE DIMENSIONS					
POLE HGT. (FT.)	TOP DIA. (IN.)	BOTTOM DIA. (IN.)	GAGE	MTG. HGT. (FT.)	
24'	3.70	7.00	11 GAGE	20'	
ALLOWABLE WIND LOADING (SQ. FT.)					
WIND*	INDICATED EPA	80 MPH	90 MPH	100 MPH	120 MPH
EPA	-	28.6	23.2	18.7	13.0

*WITH 1.3 GUST FACTOR



DRAWN: D. KONCHADA	DATE: 7/7/2020
REVISION:	DATE:
QUOTE:	PO.#
APPROVAL SIGNATURE:	

UNITED LIGHTING STANDARDS
A DWM COMPANY

23171 Groesbeck Hwy.
Warren, MI 48089
P: (586) 774-5650 | F: (586) 774-5706
www.unitedlightingstandards.com

SOME GEOGRAPHICAL AREAS HAVE SPECIAL WIND CONDITIONS THAT CAN CREATE WIND INDUCED VIBRATIONS CAUSING A FATIGUE PROBLEM. NO METHOD HAS YET BEEN FOUND FOR PREDICTING DESTRUCTIVE LIGHTING POLE VIBRATION. THESE CONDITIONS ARE UNIQUE AND CANNOT BE GUARANTEED AGAINST, AND ARE THE RESPONSIBILITY OF A LOCAL SITE ENGINEER.		
WARNING: DO NOT INSTALL LIGHT POLE WITHOUT INTENDED LOADING.		
TITLE:		
CATALOG:		
DWG NO: RTS-20-7011-EMB	SIZE: C	SHEET 1 OF 1