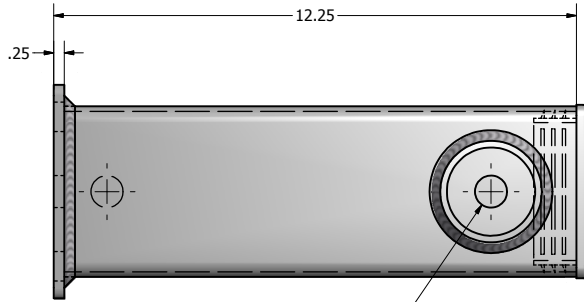
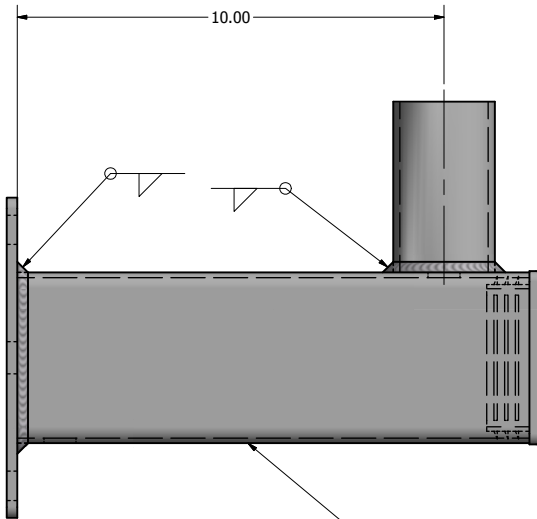


SMB-1 EPA: 0.6

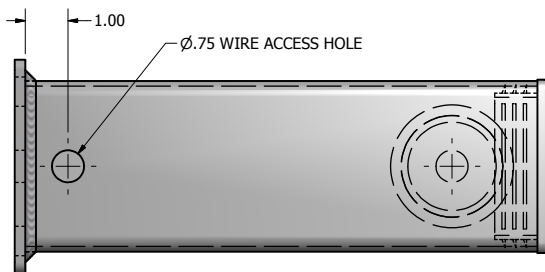


Ø.75 WIRE ACCESS



4.00 SQ. X 11 GA TUBE

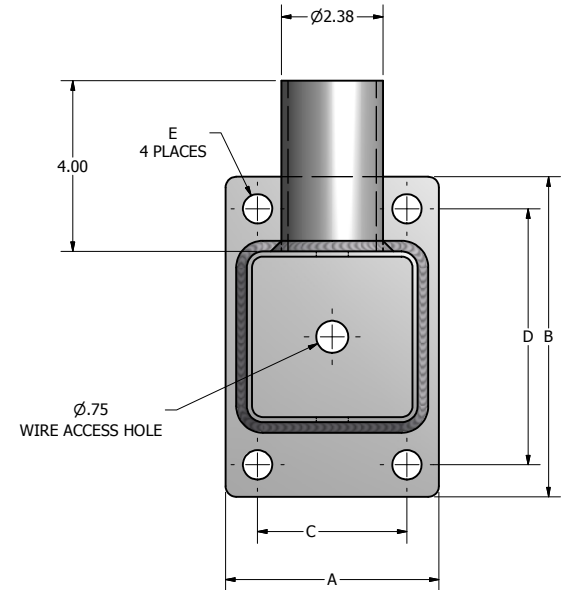
REMOVABLE END CAP



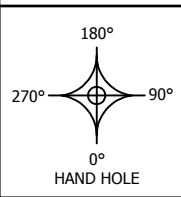
Ø.75 WIRE ACCESS HOLE

MOUNTING PLATE SPECIFICATIONS					
POLE SIZE	A	B	C	D	E
4.00 SQ	4.00	7.50	2.50	6.00	.69
5.00 SQ	5.00	7.50	3.38	6.00	.69
WALL MOUNT	5.50	7.50	4.00	6.00	.69
6.00 SQ	6.00	7.50	3.88	6.00	.69

NOTE: BRACKETS CATALOGED ARE CONSTRUCTED OF STEEL AND ARE DESIGNED FOR USE WITH STEEL OR ALUMINUM POLES. IF ALUMINUM BRACKETS ARE REQUIRED FOR ALUMINUM POLES, CONTACT YOUR REPRESENTATIVE.



FINISH: BRACKET SHALL HAVE A POLYESTER POWDER COAT FINISH IN A STANDARD COLOR.



DRAWN: G. FOSSETT	10/11/2016
CHECKED	
REVISION:	DATE:
APPROVED:	
QUOTE:	
S.O.#	
REF:	SCALE: NONE

**UNITED LIGHTING STANDARDS**  
A DWH COMPANY

23171 Groesbeck Hwy.  
 Warren, MI 48089  
 P: (586) 774-5650 | F: (586) 774-5706  
[www.unitedlightingstandards.com](http://www.unitedlightingstandards.com)

SOME GEOGRAPHICAL AREAS HAVE SPECIAL WIND CONDITIONS THAT CAN CREATE WIND INDUCED VIBRATIONS CAUSING A FATIGUE PROBLEM. NO METHOD HAS YET BEEN FOUND FOR PREDICTING DESTRUCTIVE LIGHTING POLE VIBRATION. THESE CONDITIONS ARE UNIQUE AND CANNOT BE GUARANTEED AGAINST, AND ARE THE RESPONSIBILITY OF A LOCAL SITE ENGINEER.		
TITLE:		
CATALOG:		
DWG NO: SMB-1	SIZE: C	SHEET 1 OF 1