

# LUXNEON™ Low 1005

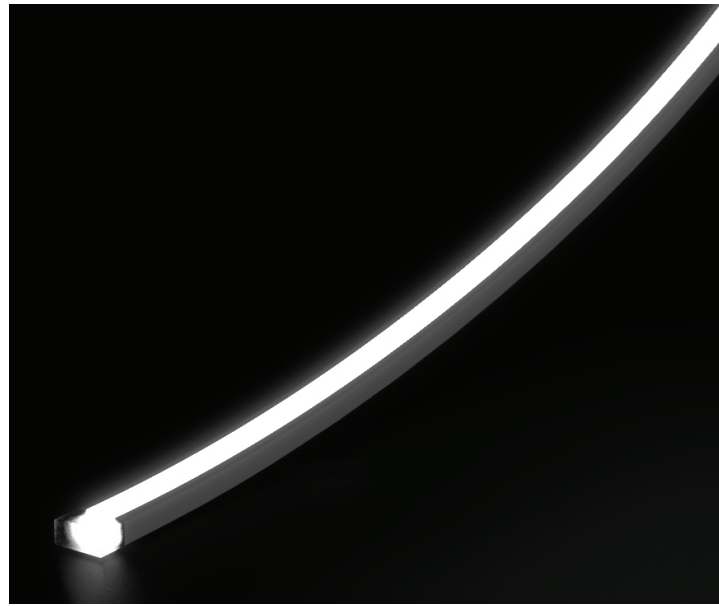
**TOP BEND**

Indoor/Outdoor Series

## SLIM, INWARD FOCUSED DIRECTIONAL LIGHTING

### LUXNEON™ Low 1005 LED Neon Flex Tube

provides more creative lighting options with its convex bending and slim shape. Flex this slim tube in an up and downwards motion to achieve inward focused directional lighting without visible hotspots at 90+ CRI. Straightforward, fuss-free installation via aluminum or plastic mounting clips means less stress and labor costs. Fully field cuttable with short cutting segments every 0.82" for last minute on-site modifications.



A super slim, easy to install neon tube solution featuring up and down convex bending.

### KEY FEATURES



**FLEXIBLE  
CONVEX  
"U" BEND**



**EASY TO  
INSTALL**



**IP67 RATED DUST  
& TEMPORARY  
IMMERSION SAFE**



**DIMMABLE**



**V-2 FLAME  
RETARDANT  
(UL94)**



**CUTTABLE**

**NEON**

**HOTSPOT-FREE,  
NEON-LIKE  
ILLUMINATION**



**UV SAFE**



**CUSTOM COLOR  
TEMPS**



**PLUG & PLAY**



**CONSISTENT  
LIGHT COLOR**



**LONG LED  
LIFESPAN**



**OUTSTANDING  
BRIGHTNESS**



**SLIM**

### ASSURED QUALITY



E477011



100% QC



LIMITED  
WARRANTY



PROJECT NAME/NO.	PART NUMBER
SPECIFIED BY	NOTE

# LUXNEON™ Low 1005

**TOP BEND**

Indoor/Outdoor Series

## MECHANICAL

### PARAMETERS

**LED Count** 98 LEDs/ft (336 LEDs/m)

**LED Roll Length** 16 ft  $\frac{3}{8}$ " (5m) or built to order

**Tube Dimensions** Tube cross-section: 0.18" (4.8mm) x 0.39" (10.0mm) • Front cap: 0.50" (12.7mm) x 0.98" (25mm) • Closing end cap: 0.32" (8mm) x 0.41" (10.5mm)

**Bending Diameter** 2.36" (60mm)

**Cutting Length** 0.82" (20.83mm)

### CONSTRUCTION & BASE MATERIAL

**Tube Material** Silicone

**Tube Max. Run** 16.4ft (5m). Length may also be customized for your order

**PCB Material** Triple layered Polyimide film with SMD LEDs.

**End Cap Material** Silicone

**Diffuser Material** Milky White Silicone

**Substrate Material** Silicone

**Mounting Clip Material** Plastic

**Flammability Rated** UL94 V-2 flame retardant

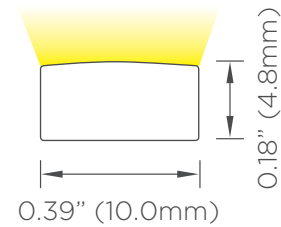
### COMPLIANCE & REGULATORY APPROVAL

UL E477011 • cUL E477011 • RoHs • CE • Lead Free • Warranty 5 years

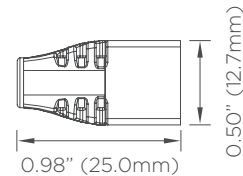
### COLORS

**Standard White Silicone Tubing** Milky white silicone

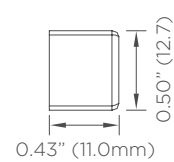
### SECTIONAL VIEW



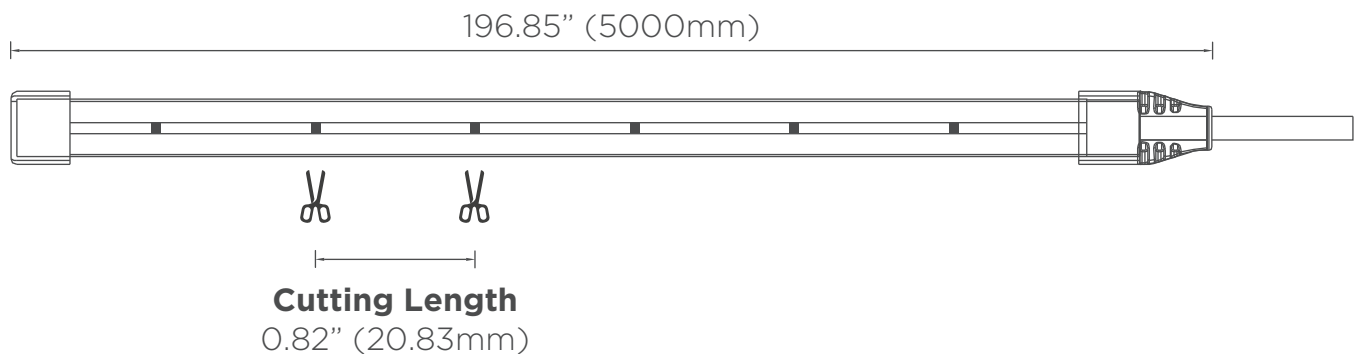
### FRONT CAP



### CLOSING END CAP



### TUBE CUTTING DIAGRAM



LED TYPE	OPERATING VOLTAGE	BENDING DIAMETER minimum	DIMENSIONS tube cross-section	CUTTING LENGTH	# LEDs per cut section
NEON TUBE	24V	2.36" (60mm)	0.18" x 0.39" (4.8mm x 10mm)	0.82" (20.83mm)	7

PROJECT NAME/NO.	PART NUMBER
SPECIFIED BY	NOTE

# LUXNEON™ Low 1005

**TOP BEND**

Indoor/Outdoor Series

## ELECTRICAL

### PHOTOMETRICS

**Wide Beam Angle** 113°

**Lamp Life** 50,000+ hours

**Standard Color Temperatures** 3000K • 4100K • 5300K • 6500K

**Custom Color Temperatures Available** Please inquire for more information

**Lumen Output** See Photometric Data Table

### DIMMING

- Pulse-width modulation dimming (PWM)
- 0-10V dimming
- Magnetic low voltage (MLV)

### POWER SUPPLY

**Input Voltage** 24VDC constant voltage

**Input Current** 0.09 A/ft (0.3 A/m)

**Power Consumption** *White color temperatures* 2.20 W/ft (7.2 W/m)

**Wire Size** 20 AWG 2 Wire

**Please Use Only with Class 2 Power Supply**
**Max. No. of Wire Connections** 2

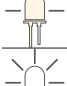
**Connector Type** Molex® • DC Barrel Jack • Hardwire

### MAX. LOAD & MAX LENGTH

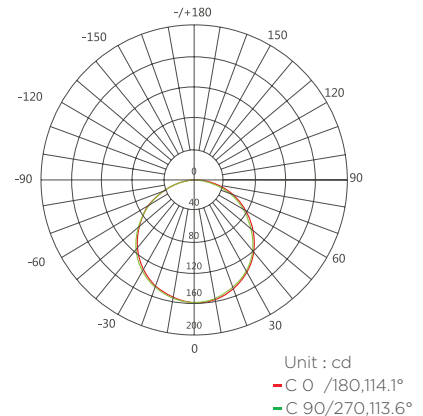
#### MAX LOAD 96 W CLASS 2 ONLY

# Power Supplies	Max. Tube Length
1	39.4ft (12m)

### PHOTOMETRIC DATA TABLE

	CCT	EFFICACY	BEAM ANGLE	LUMINOUS FLUX	POWER
	2700K Very Warm White	60 lm/W	113°	132 lm/ft 432 lm/m	2.20 W/ft 7.2 W/m
	3000K Warm White	62 lm/W	113°	136 lm/ft 446 lm/m	2.20 W/ft 7.2 W/m
	4100K Neutral White	65 lm/W	113°	143 lm/ft 468 lm/m	2.20 W/ft 7.2 W/m
	5300K Daylight	72 lm/W	113°	158 lm/ft 518 lm/m	2.20 W/ft 7.2 W/m
	6500K Cool White	75 lm/W	113°	165 lm/ft 540 lm/m	2.20 W/ft 7.2 W/m

### LUMINOUS INTENSITY DISTRIBUTION DIAGRAM



AVERAGE BEAM ANGLE (50%): 113.9°

**Current**  Compatible


- Energy Savings
- Versatile
- Scalable
- Outdoor Rated
- Wired, Wireless or Hybrid

Contact us to inquire about other compatible controls

PROJECT NAME/NO.	PART NUMBER
SPECIFIED BY	NOTE

# LUXNEON™ Low 1005

## TOP BEND

Indoor/Outdoor Series

## INSTALLATION

**Field Cuttable** LUXNEON Low 1005 is fully field cuttable every 0.82" (20.83mm). Use scissors or straight edge cutting tool to cut along the LUXNEON's marked cut sections.

**Field Bendable** LUXNEON Low 1005 is field bendable and is designed to create unique profiles, contours, and patterns. **LUXNEON Low 1005 is designed for convex (up and down) "U" bending only.** Do not bend LUXNEON Low 1005 against its natural curvature, which will cause the internal LED light engine to snap and render it unusable.

**Environment** Indoor and general outdoor location safe. For outdoor installations, avoid prolonged exposure to water and install and secure end caps to LUXNEON with silicone. Light colors will retain their hue in daylight even over extended periods of time when installed outdoors. Tubes are UV safe, hydrocarbon insensitive, and resistant to fading.

**IP67 Rated** LUXNEON is fully IP67 compliant. Tubes are protected from total dust ingress and are temporary immersion safe.

**Operating Temperature** -4°F ~ +140°F (-20°C ~ +60°C)

**Ambient Temperature** -4°F ~ +158°F (-20°C ~ +70°C)

**Heat Sink** Not required for installation. LUXNEON Low illuminates spaces with reduced thermal consumption and output.

**Mounting** May be mounted using the available aluminum or plastic mounting clips. The mounting clips must be fastened onto the mounting surface and cleared of debris prior to clipping in the LUXNEON product to complete the installation.

**Connecting Multiple Tubes** LUXNEON Low 1005 may be purchased custom cut to your desired length ordered or in 5 meter reels and field cut to size. Keep in mind the max load restrictions enforced by Class 2 regulations when determining the number of power supplies needed for your tube. In compliance with Class 2, LUXNEON Low 1005 lighting solutions that are fully customized by LEDCONN may be mounted side by side if extra length is required beyond the max compliant length of 39.4 ft (12m). Applications requiring longer runs than 39.4ft (12m) will require higher capacity drivers with multiple parallel connections between driver and LED neon or individual drivers for each 39.4ft (12m) runs.

### SAFETY DISCLOSURES

**Electric Code Compliance** Please make sure to install LUXNEON Low 1005 in accordance with standard national and local electrical codes.

**Outdoor Usage** LUXNEON Low 1005 is suitable for indoor and outdoor location applications. For wet location installations, please make sure to seal the entry points completely with silicone to prevent water from entering the product. Failure to do this may render the product unusable or defective.

**Class 2 Compliance** When cutting your LUXNEON Low 1005 tube, keep in mind that Class 2 compliance restricts the max load of the product to 96W, which in turn prevents the maximum cut length from exceeding 39.4ft (12m) with a single power supply. A fully Class 2 compliant LUXNEON Low 1005 lighting solution should never exceed these lengths and may only support up to 1 Class 2 power supplies at a time.

**Avoid Electrical Shock** Always disconnect the power supplies before installing or servicing to avoid electrical shock.

**Actual Product Color May Vary** Please note that the product color as seen in this specification sheet, photography, and related marketing material for this product may vary slightly from your actual customized product due to photographic and design limitations.

**Specifications are Subject to Change Without Notice** While we try to make every effort to inform customers of updates to our products, we reserve the right to make modifications and improvements to our fixture specifications and designs without advance notice.

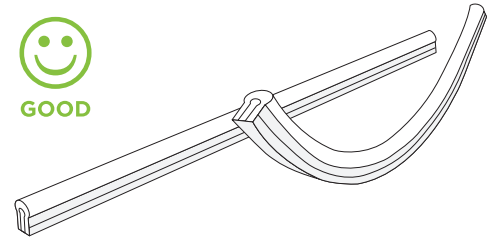
**Manufacturer is Not Liable for Matching Fixtures to Pre-Existing Fixture Installations** We cannot guarantee matching the CCT appearance, product design, or lumen output for pre-installed fixtures or reorders.

### TOP (CONVEX) BEND

LUXNEON is designed to bend in a top (convex/up and down) formation.



GOOD

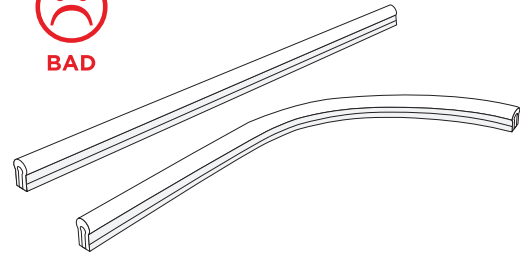


### SIDE (LATERAL) BENDING

**Never attempt a side (lateral/left to right) bend with this product!\***



BAD



\*We do offer other LUXNEON options designed for lateral "S" bending. Please visit our website or reach out to our sales representatives for more information.

### CUTTING SEGMENTS

Cutting segments every 0.82" (20.83) are visible on the side of the neon tube profile.

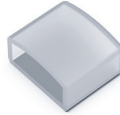


PROJECT NAME/NO.	PART NUMBER
SPECIFIED BY	NOTE

# LUXNEON™ Low 1005

**TOP BEND**

Indoor/Outdoor Series


**1**

**2**

**3**

**4**

**5**

**6**

## AVAILABLE ACCESSORIES

#	PART NO.	COMPONENT	MATERIAL	PURPOSE
1	<b>NDF1005-PCIS</b>	Front Cap	Silicone	Seals the input side of LUXNEON.
2	<b>NDF1005-ECS</b>	Closing End-Cap	Silicone	Seals the end of a cut section.
3	<b>NDF1005-AMC</b>	Mounting Clip	Anodized aluminum	Mounting accessory.
4	<b>NDF1005-ICJ</b>	Interconnection Joiner Connector Set	Plastic	Connection between 2 LUXNEONs.
5	<b>NDF1005-CLIP</b>	Front Mounting Clip	Plastic	Mounting accessory.
6		Screws	Zinc coated steel	Secures the aluminum track to mounting surface.

PROJECT NAME/NO.	PART NUMBER
SPECIFIED BY	NOTE

# LUXNEON™ Low 1005

**TOP BEND**

Indoor/Outdoor Series

## APPLICATIONS

- Outdoor/Indoor Decorative Lighting
- Cove Lighting
- Awning Lighting
- Wall Wash Lighting
- Architectural Lighting
- Curved Embedded Lighting
- Decorative Linear Lighting
- Channel Letters
- Signage
- Border Tubing
- Accent Lighting
- Compact, Space-Sensitive Applications
- Retail Applications
- ...And Many More!



## LUXNEON™ SILICONE FLEX PART NUMBER

### EXAMPLE

	LUXNEON™ 1005	24"	3000K	DIFFUSED	DC BARREL
<b>NSLT24ZAB</b>	<b>NSLT</b>	<b>24</b>	<b>Z</b>	<b>A</b>	<b>B</b>
	PRODUCT LINE	LENGTH	COLOR	DIFFUSED OPTION	CONNECTOR
<b>BUILD IT!</b>					

### PRODUCT LINE

**NSLT** LUXNEON™ LOW PROFILE 1005  
TOP BENDING

### LENGTH (IN INCHES)

**LL** LENGTH (VARIES)

### COLOR

**W** 6500K  
**V** 5300K  
**Y** 4100K  
**Z** 3000K  
**C** CUSTOM

### DIFFUSED OPTION

**A** DIFFUSED

### CONNECTOR

**B** DC BARREL JACK  
**H** HARDWIRE  
**C** SPECIAL

PROJECT NAME/NO.	PART NUMBER
SPECIFIED BY	NOTE