

FIXTURE TYPE \_\_\_\_\_

PROJECT NAME \_\_\_\_\_

LOCATION \_\_\_\_\_



# AC Zolo™ 7 RGBW Combined

LINE VOLTAGE WASHER/GRAZER

Store in a Temperature-Controlled Environment.



## Description

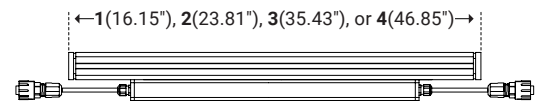
The AC Zolo 7 is the first line voltage option in our flagship grazing series. Available with a variety of optics, accessories, and color temperature options without the need for remote drivers.

## Dimensions

Length	Variable (see below)
Width	1.97" (50mm)
Height	2.70" (69.3mm)

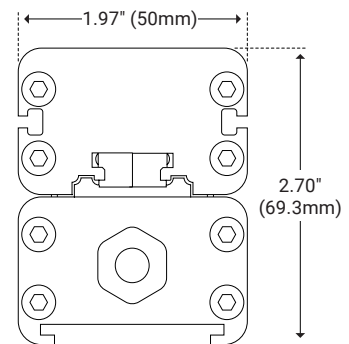
## Features

- High Purity Tempered Glass
- Extruded Aluminum Alloy Housing
- Available in Titanium Gray, Black, or White Finish\*
- Daisy Chain Multiple Fixtures
- IP66 Outdoor Rated
- Louver Options Available



## Specifications

Input Voltage	120-277VAC
Color Option	RGB + 3000K
Watts per Foot	15W/ft
Lumen per Watt	40 lm/W
Lumen per Foot	600 lm/ft
Beam Spread	20°, 25°, 35°, 50°
Max Run Length	50ft at 120V AC 80ft at 277V AC
CRI	80*
Dimming Options	DMX
Operating Temp. Range	-40°F (-40°C) to 140°F (60°C)



\* Customizable—Consult Factory



## I Ordering Code Builder

Item	Length	Power	Fixture Type	Dimming
<b>Z7AC</b> Z7AC—AC Zolo 7	<b>1</b> —16.15" (410mm) <b>2</b> —23.81" (605mm) <b>3</b> —35.43" (900mm) <b>4</b> —46.85" (1190mm)	<b>15</b> —15W/ft	<b>C</b> —Combined	<b>X</b> —DMX
Color*	Beam Angle	Mounting	Finish*	Option
<b>30</b> 30—3000K	<b>20</b> —20° <b>25</b> —25° <b>35</b> —35° <b>50</b> —50°	<b>S2</b> —2" Stand Off <b>S3</b> —3" Stand Off <b>GS</b> —Ground Stake <b>L3</b> —L Bracket	<b>TG</b> —Titanium Gray <b>BK</b> —Black <b>WH</b> —White	<b>NA</b> —None <b>LV</b> —Louver <b>ALV</b> —Asymmetric Louver

Example: Z7AC-1-15-C-X-30-20-S2-TG-LV

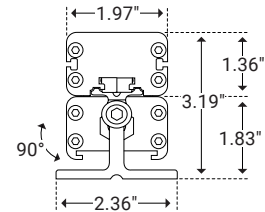
\* Customizable—Consult Factory

## I Mounting

### 2" Stand Off



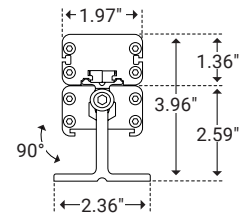
Unit Number	Z-07-S2
Ordering Code	S2
Foot Length	1.18" (30mm)
Foot Width	2.36" (60mm)
Stand Off Height	1.83" (46.4mm)



### 3" Stand Off



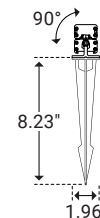
Unit Number	Z-07-S3
Ordering Code	S3
Foot Length	1.18" (30mm)
Foot Width	2.36" (60mm)
Stand Off Height	2.59" (66mm)



### Ground Stake



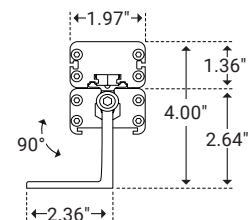
Unit Number	Z-07-GS
Ordering Code	GS
Stake Length	8.23" (209mm)
Stake Width	1.96" (50mm)



### L Bracket



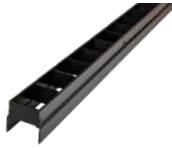
Unit Number	Z-07-L3
Ordering Code	L3
Foot Length	1.18" (30mm)
Foot Width	2.36" (59.9mm)
Stand Off Height	2.64" (66.9mm)



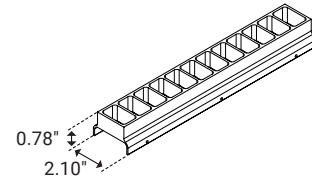


## I Glare Options

### Louver



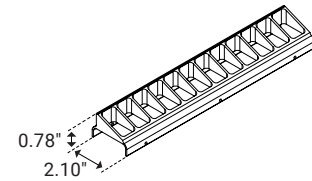
Unit Number	Z-07-LV
Ordering Code	LV
Louver Width	2.10" (53.3mm)
Louver Height	0.78" (20mm)
Overall Height	1.29" (33mm)



### Asymmetric Louver



Unit Number	Z-07-ALV
Ordering Code	ALV
Louver Width	2.10" (53.3mm)
Louver Height	0.78" (20mm)
Overall Height	1.29" (33mm)

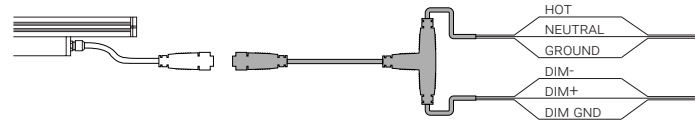


## I Power & Connectors

### Power Lead



Unit Number	Length
Z-7AC-FML-6	6ft
Z-7AC-FML-20	20ft
Z-7AC-FML-50	50ft



### Connector



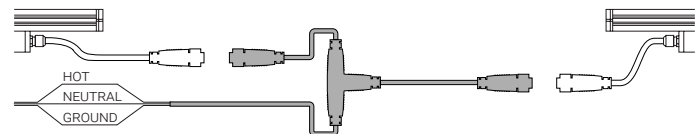
Unit Number	Length
Z-7AC-FMC-1	1ft
Z-7AC-FMC-2	2ft
Z-7AC-FMC-6	6ft



### T-Connector



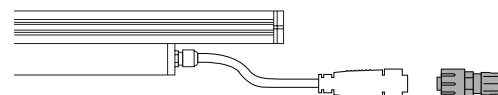
Unit Number	Z-7AC-TCONNECTOR
-------------	------------------



### End Cap



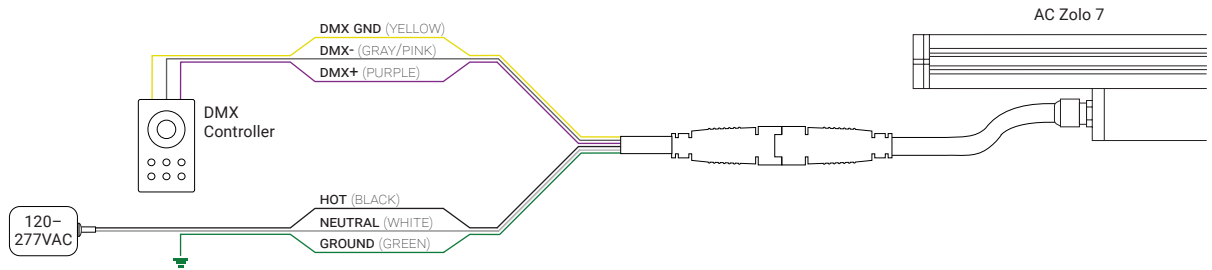
Unit Number	Z-7AC-END-DMX
-------------	---------------





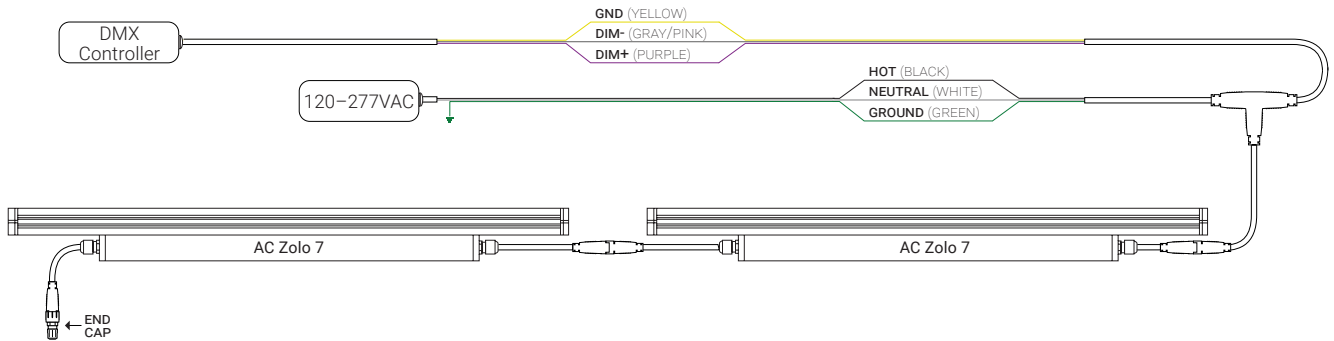
## | Wiring Options

### DMX



## | Daisy Chain

### Multiple Fixtures



### Multiple Power Sources

