

FIXTURE TYPE _____

PROJECT NAME _____

LOCATION _____



CH-0009

TRIMLESS & MUD-IN CHANNEL

Create perfectly flush, seamless lines of light without modifying the structure behind the sheet rock.

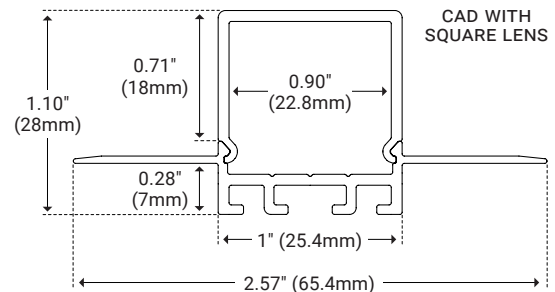
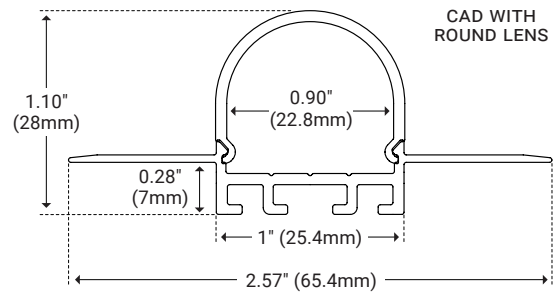


I Features

- Available In 78.74" (2m) Sections
- Extruded Aluminum Construction
- Anodized Matte Finish
- Straight and Angled Connectors Available to Create Long, Continuous Runs
- Drywall Mud-in Mounting for a Seamless Recessed Look
- Consult Factory for Custom Lengths and Finishes
- Available In Various Finish Colors

I Dimensions

| | |
|------------------|----------------|
| Length | 78.74" (2m) |
| Width (External) | 2.57" (65.4mm) |
| Width (Internal) | 0.90" (22.8mm) |
| Height | 1.10" (28mm) |



I Ordering Code Builder

| Series | Length | Lens | End Caps |
|-------------------------|---------------------|---|--------------------------|
| CH0009 | 2 | | EC |
| CH0009 – CH-0009 | 2 – 2 Meters | WHR – White Lens Round WHS – White Lens Square | EC – End Cap Pair |

Example: CH0009-2-WH-EC



I Lens



White Lens Round

| | | |
|--------------------|----------------------------------|-------------------|
| Unit Number | CH-LNS-AE-WHR-2M | Ordering Code WHR |
| Dimension | L 78.74" (2m) W 1" (25.7mm) | H 0.83" (21.2mm) |
| Light transmission | 70% | |



Disposable Cover Round

| | | |
|-------------|--|------------------|
| Unit Number | CH-LNS-AE-DISPR-2M | INCLUDED |
| Dimension | L 78.74" (2m) W 1" (25.7mm) | H 0.83" (21.2mm) |
| Description | Used to protect interior LED area during installation. | |



White Lens Square

| | | |
|--------------------|----------------------------------|-------------------|
| Unit Number | CH-LNS-AE-WHS-2M | Ordering Code WHS |
| Dimension | L 78.74" (2m) W 1" (25.7mm) | H 0.83" (21.2mm) |
| Light transmission | 70% | |



Disposable Cover Square

| | | |
|-------------|--|------------------|
| Unit Number | CH-LNS-AE-DISPS-2M | INCLUDED |
| Dimension | L 78.74" (2m) W 1" (25.7mm) | H 0.83" (21.2mm) |
| Description | Used to protect interior LED area during installation. | |

I End Cap



Round End Cap Pair

| | | |
|-------------|------------------------------------|------------------|
| Unit Number | CH-ECR-0009 | Ordering Code EC |
| Dimension | L 0.26" (6.8mm) W 1" (25.7mm) | H 1.1" (28mm) |
| Note | Included with Round Lens | |



Square End Cap Pair

| | | |
|-------------|------------------------------------|------------------|
| Unit Number | CH-ECS-0009 | Ordering Code EC |
| Dimension | L 0.26" (6.8mm) W 1" (25.7mm) | H 1.1" (28mm) |
| Note | Included with Square Lens | |

I Optional Accessories

| Product | Unit Number | Description |
|---------------------------|----------------|--|
| Straight Connector | CH-CON-01-180 | Secure two pieces of channel together to form a continuous run of light. |
| 90° Connector Horizontal | CH-CON-01-90H | Secure two pieces of channel together to form a 90° horizontal corner. |
| 90° Connector Vertical | CH-CON-01-90V | Secure two pieces of channel together to form a 90° vertical corner. |
| 120° Connector Horizontal | CH-CON-01-120H | Secure two pieces of channel together to form a 120° horizontal corner. |
| 135° Connector Horizontal | CH-CON-01-135H | Secure two pieces of channel together to form a 135° horizontal corner. |
| 135° Connector Vertical | CH-CON-01-135V | Secure two pieces of channel together to form a 135° vertical corner. |