

CATALOG #: _____

Type: _____

PROJECT: _____

FEATURES

- Fixture can be surface mounted or semi-recessed for ultra-low-profile look
- Aircraft cable or pendant mount fixture for additional mounting choices
- Decorative die-cast aluminum end caps provide high-end appearance
- Optional anti-microbial white finish available for use in healthcare applications
- Maximize energy savings with efficacies as high as 144 lm/W
- Available with Avi-on wireless fixture controls
- Made Right Here® in the USA

SPECIFICATIONS

- HOUSING** – .040" die-formed aluminum with die-cast decorative end caps.
- SHIELDING** – Ribbed acrylic diffuser.
- FINISH** – Textured matte white polyester TGIC powder coat bonded to phosphate-free, multi-stage pretreated metal. All parts painted after fabrication to facilitate installation, increase efficiency, and inhibit corrosion.
- ELECTRICAL** – High quality mid-power LED boards. L85 >50,000 hours. 25°C maximum ambient operating temperature.
- MOUNTING** – Semi-recessed in NEMA Type "G" ceiling, surface (ceiling or wall), or suspended.
- LISTINGS** – cCSAus certified as luminaire suitable for dry or damp locations.
- WARRANTY** – 5-year limited warranty, see hew.com/warranty.



ORDERING EXAMPLE: ASM - 4 - L46/835 - P - F - A - AC(Y12)/D24 - OPTIONS - CONTROL/DIM - UNV

ORDERING INFO

SERIES	LENGTH	LUMENS ^[1]	CRI	CCT	MOUNTING TYPE	FIXTURE TYPE
ASM	4' 4"	4'	8 80	27 2700K	S Surface	F Electrical feeder unit ^[5]
	8' 8" ^[2]	L25 2,500lm	9 90 ^[3]	30 3000K	P Suspended	J Joiner unit ^[6]
		L46 4,600lm		35 3500K	R Semi-recessed ^[4]	S Stand-alone unit ^[7]
		8'		40 4000K		
		L50 5,000lm		50 5000K		
		L92 9,200lm				

SHIELDING ^[8]	MOUNTING (EXAMPLE: AC(Y12)/D24) ^[9]	OPTIONS ^[10]
A Ribbed acrylic diffuser	ADJUSTABLE AIRCRAFT CABLE	EM/10WLP Low-profile 10-watt LED emergency battery
	Prefix Type Length	AMW Anti-microbial white finish
	AC(Y12)/ D 1" grid & hardpan 24 24"	(L___) Additional lower lumen packages available.
	N 9/16" grid 48 48"	Example: 3,500 lumens =
	S Slot grid 96 96"	ASM-4-L46/835-A-(L35) ^[11]
	PENDANT MOUNT ^[13]	QC___ Quick-connect wiring harness. ^[12]
	SS-___ Specify length in inches ^[14]	

CONTROL ^[15]	DRIVER ^[16]	VOLTAGE
— None	DIM Driver with external dimming wires	120 120V
AVI-LVFA Avi-on wireless fixture control ^[17]	DRV Driver without external dimming wires	277 277V
	DA Driver with 12V auxiliary power, without external dimming wires ^[18]	UNV 120-277V

NOTES

- Lumen output based on 3500 CCT. Actual lumens may vary +/-5%, see page 2 for FIXTURE PERFORMANCE DATA.
- Ships with (2) 4' lenses.
- Extended lead times may apply. Consult factory for availability.
- Available in stand-alone fixtures only.
- Two end caps packed with fixture, quick-connect wiring harness. Suspended includes straight white cord standard. Wire gauge to be determined by row length.
- Quick-connect wiring harness.
- Two end caps included. Suspended includes straight white cord standard. Wire gauge to be determined by row length.
- See page 2 for FIXTURE DETAILS.
- See page 3 for MOUNTING DETAILS. Power cord provided with aircraft cables only. Specify with suspended mounting type only.
- See page 3 for FINISH OPTIONS. Custom colors available upon request.
- Specify in increments of 100 nominal lumens. Option must be specified with next higher lumen package.
- See page 3 for QUICK CONNECT OPTIONS.
- 3/8" IPS Stem and ø5" canopy.
- 4" minimum. Two stem sets required. One additional stem set required for each row mounted fixture.
- See page 4 for AVI-ON BLUETOOTH WIRELESS CONTROL DETAILS.
- See page 4 for ADDITIONAL DRIVER OPTIONS.
- DA Driver only.
- Avi-on Controls only.



FIXTURE PERFORMANCE DATA

	LED PACKAGE	DELIVERED LUMENS	WATTAGE	EFFICACY (lm/W)
4'	L25	2614	19.5	134.1
	L46	4683	33.9	138.2
8'	L50	4917	34.0	144.6
	L92	9212	64.7	142.3

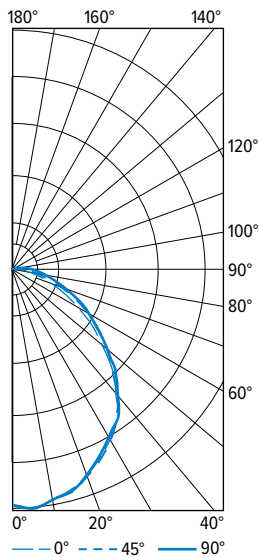
- Photometrics tested in accordance with IESNA LM-79. Results shown are based on 25°C ambient temperature.
- Wattage shown is average for 120V through 277V input.
- Results based on 3500K, 80 CRI, actual lumens may vary +/-5%
- Use multiplier table to calculate additional options.

MULTIPLIER TABLE

COLOR TEMPERATURE		
	CCT	CONVERSION FACTOR
80 CRI	2700K	0.97
	3000K	0.99
	3500K	1.00
	4000K	1.03
	5000K	1.06
90 CRI	2700K	0.80
	3000K	0.82
	3500K	0.83
	4000K	0.86
	5000K	0.89

PHOTOMETRY

ASM-4-L46/835-A-S-DIM-UNV Total Luminaire Output: 4682 lumens; 33.9 Watts | Efficacy: 138.2 lm/W | 80 CRI; 3500K CCT

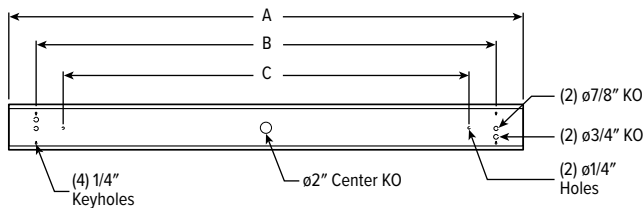


VERTICAL ANGLE	HORIZONTAL ANGLE			ZONAL LUMENS
	0°	45°	90°	
0	1792	1792	1792	
5	1822	1820	1820	172
15	1742	1737	1731	487
25	1576	1565	1558	719
35	1370	1368	1368	846
45	1045	1075	1082	821
55	701	765	780	676
65	411	503	522	483
75	190	288	306	287
85	48	136	166	136
90	11	77	111	
95	0	41	72	45
105	0	0	24	10
115	0	0	0	1
125	0	0	0	0
135	0	0	0	0
145	0	0	0	0
155	0	0	0	0
165	0	0	0	0
175	0	0	0	0
180	0	0	0	

	ZONE	LUMENS	% FIXTURE
LUMEN SUMMARY	0 - 30	1378	29
	0 - 40	2223	48
	0 - 60	3720	79
	0 - 90	4625	99
	90 - 120	57	1
	90 - 150	57	1
	90 - 180	57	1
	0 - 180	4682	100

FIXTURE DETAILS

BACKVIEW



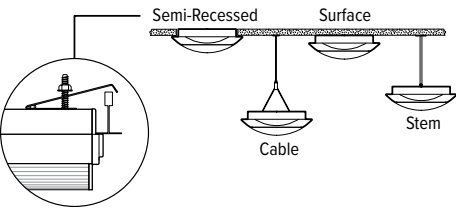
	A	B	C
4'	46-13/16"	40"	32"
8'	93-5/8"	87"	80"

Dimension A is for row-mounted units without end caps. End caps add 3/4" to dimension A.



MOUNTING DETAILS

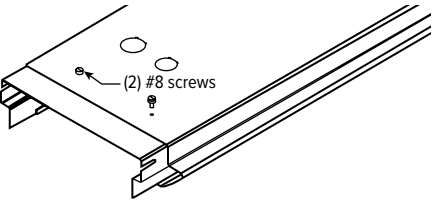
CONTINUOUS ROW



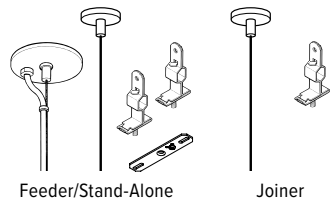
Semi-recessed model is suitable for installation in NEMA Type “G” ceiling system of 1” wide (nominal) tees mounted across ends of fixture 48” O.C., using factory furnished mounting brackets. Fixtures may be mounted in continuous row. Ceiling tiles are supported along sides by fixture housing. Fixture protrudes 2” below ceiling plane.

Depending on installation method, cable mounting may require additional counter-weights due to side-mounted driver.

ROW ALIGNER
(not available with semi-recessed units)



STANDARD HARDWARE FOR SUSPENDED PRODUCT (Grid and Hardpan)



- Notes:
- Fixtures specified with suspended mounting type are provided with adjustable length aircraft cables with two-point “Y” connectors and mounting hardware, must specify.
 - Electrical supply is brought into the feeder fixture, either as part of a row or as a stand-alone unit. Joiner fixtures complete the row.
 - The feeder kits are standard with a 5” canopy to cover the junction box and a 2” canopy at the non-feed point. No J-box is required at non-feed points.

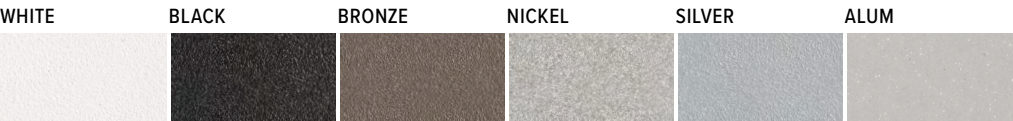
CORD FOR SUSPENDED PRODUCT

Units specified with aircraft cable require cord. Please specify cord type using ordering information below. Long fixture rows may require multiple feed points based on 18ga conductor size.

EXAMPLE: S2438D/W				
CORD TYPE	LENGTH	# OF COND. ^[1]	WIRE SIZE	COLOR
S	24 24”	3	8D 18ga	/W White /B Black
	48 48”	4		
	96 96”	5		
		6		

¹ Includes (2) 22ga purple & pink dimming conductors

FINISH OPTIONS



For custom color, please specify RAL code or a manufacturer code with description. All custom colors other than RAL require two sample swatches, minimum 1” square.

QUICK CONNECT OPTIONS

Note: Quick connect wiring required for row mounting. All QC harnesses contain (5) 16ga conductors plus ground.

DESIGNATION	NUMBER OF 16GA WIRES FACTORY CONNECTED (EXCLUDING GROUND)	WIRE COLOR/POWER SUPPLY FACTORY CONNECTIONS	TYPICAL USE
QCBW	2	Black, White	On/off switching (DRV) or line voltage dimming (DIM LINE)
QCRW	2	Red, White	Alternating circuits on/off switching (DRV) or line voltage dimming (DIM LINE)
QCBRW	3	Black, Red, White	On/off switching (DRV) or line voltage dimming when equipped with EM battery packs
QCBW/PK	4	Black, White, Purple, Pink	Single circuit with 0-10V low voltage dimming (DIM)
QCRW/PK	4	Red, White, Purple, Pink	Alternating circuits on/off switching with 0-10V low voltage dimming (DIM)
QCBRW/PK	5	Black, Red, White, Purple, Pink	On/off switching when equipped with EM battery packs and 0-10V dimming (DIM)
QCBW/RPK	5	Black, White, Red, Purple, Pink	On/off switching with 0-10v dimming and 0-10v tunable using shared common
QCUU	N/A	N/A	QC harness passes through fixture, but is not connected to it

SEE NEXT PAGE FOR CONTROL DETAILS.

AVI-ON BLUETOOTH WIRELESS CONTROL DETAILS

AVI-ON NETWORK FEATURES

Simple

- Gateway-free distributed control
- Factory pre-commissioning
- Contractor friendly installation
- Occupancy/vacancy/daylight sensing

Scalable

- Virtually unlimited network size
- Spans small areas to large warehouses
- Flexible control strategies

Secure

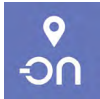
- Optional cloud connectivity
- UL IoT platinum security rating
- DLC 5.0 compliant

DIGITAL INSTALLATION TOOLS

Avi-On mobile apps provide intuitive, quick installation and commissioning. Pro tools are available to qualified installers.



Commissioning Mobile App

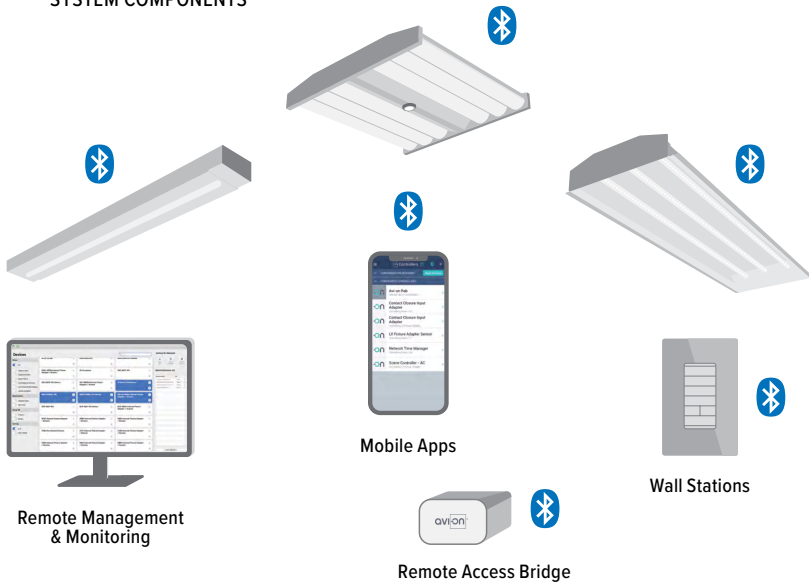


Zone Scanner Web App



Commissioning Pro App

SYSTEM COMPONENTS



The Bluetooth® word mark and logos are registered trademarks owned by Bluetooth SIG, Inc. and any use of such marks by Avi-On is under license. Other trademarks and trade names are those of their respective owners.

ACCESSORIES

WALL STATIONS	
AVI-2401AC	Scene controller - numbered 1-4, 120-277VAC
AVI-2402BAT	Scene controller - numbered 1-4, battery powered
AVI-2401AC-2	Dimmer with presets - percentages, 120-277VAC
AVI-2402BAT-2	Dimmer with presets - percentages, battery powered
AVI-2401AC-3	On/off/dimming, 120-277VAC
AVI-2402BAT-3	On/off/dimming, battery powered
CONNECTIVITY	
AVI-2001RAB-01-P	Remote access bridge for projects 100 or greater
AVI-2001RAB-01-C	Remote access bridge for projects less than 100
AVI-KIT-NTM	Network time manager with Battery Backup
CEILING MOUNT SENSORS	
AVI-KIT-SEN-DUCM	PIR motion and ultrasonic sensor kit
AVI-KIT-SEN-ICM	PIR motion and photocell sensor kit

For load controllers and additional accessory info, see hew.com/avi-on

ADDITIONAL DRIVER OPTIONS

Note: Lumen restrictions apply, consult product builder at hew.com/product-builder.

CATALOG NUMBER	DESCRIPTION
DRV	Driver prewired for non-dimming applications
DIM	Dimming driver prewired for 0-10V low voltage applications
DIM1	1% dimming driver prewired for 0-10V low voltage applications
DIM LINE	Line voltage dimming driver (TRIAC and ELV compatible, 120V only)
DIM TRC	Line voltage dimming driver (TRIAC compatible, 120V only)
DA	Dimming driver with 12V auxiliary
SD40	40% step-dimming driver
SD50	50% step-dimming driver
DALI	DALI dimming driver
LDE1	Lutron Hi-lume 1% EcoSystem dimming LED driver

