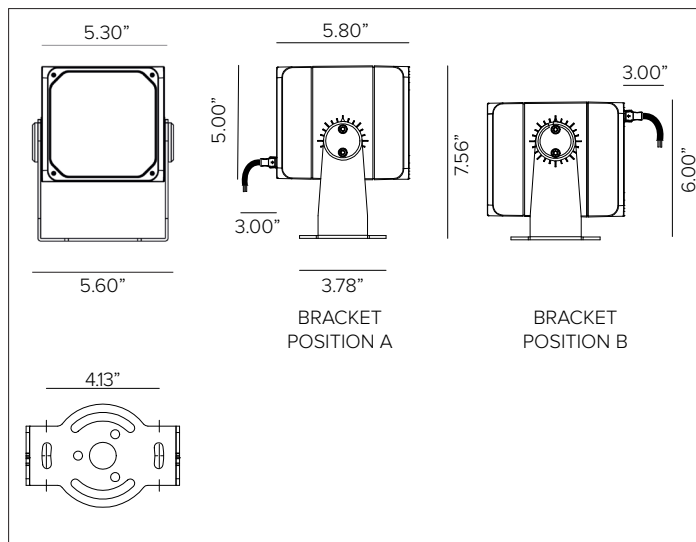


DART MEDIUM RGBW

Professional Adjustable Dynamic Color Changing Projector Floodlight



DART MEDIUM RGBW shown in Ferrite Dark Grey finish.



CONCEPT

Small footprint fully adjustable LED projector with high intensity RGBW LED's for dynamic color changing illumination.

MECHANICAL CHARACTERISTICS

Housing	5.30" W x 5.80"D
Materials	Die-cast aluminum powder coated body and joints for maximum heat dissipation. Marine Grade cataphoresis ^ available as optional.
Finish	Textured finish. ● Ferrite Dark Grey ● Heritage Brown ● Bronze ● Black ● White ● Sandstone Grey
Power Connection	Required 20-8 direct burial lead cable with quick disconnect in 10ft / 25ft / 50ft lengths, see required options.
Functionality	Adjustable up to ±45° on the horizontal pane and +90°/-45° on the vertical plane with aim locking set screw.
Mounting	Fixture can be installed directly to mounting surface or used with optional mounting installation accessories.
Weight	7lbs
Protection	IP66
Impact	IK10

CERTIFICATIONS

cULus Class 2 Wet Location Listed.
 Tested in accordance with LM-79-08.
 Compliant for California installations.
 IEC 62471
 RoHS3 EU 215/863

WARRANTY

5 year limited warranty

SUSTAINABILITY

Luminaire designed for disposal/recycling at end-of-life. Replaceable LED light source and control gear by a Targetti technician.

ELECTRICAL CHARACTERISTICS

Power Supply	Remote Class 2 power supply with DMX/RGBW interface required, see available options. Refer to Targetti Onsite Services for additional programing and installation support.
Wattage	34W / 4Ch
Voltage	850mA @ 9-12V DC per channel

SOURCE

High efficiency RGBW LED quadchip.

TM30	CCT (Nominal)	SDCM
	RGBW 5500K	2

OPTIC

Metalized polycarbonate reflector and holographic PMMA diffusion filter.

Beam				
	SP 17°	FL 33°	MWFL 47°	WFL 58°
Delivered Lumens				
RED	281Lm	276Lm	278Lm	277Lm
GREEN	323Lm	318Lm	320Lm	318Lm
BLUE	87Lm	86Lm	86Lm	86Lm
5500K	508Lm	500Lm	504Lm	501Lm
RGB	618Lm	609Lm	613Lm	609Lm
RGBW	1044Lm	1028Lm	1035Lm	1029Lm
Efficacy	57Lm/W max. Refer to photometric graphs for specific values.			
Lifetime	L80/B10 60,000hrs at max TA +25°C			
Photobiological Classification	Low risk safety RG1			

DART MEDIUM RGBW

SPECIFICATION INFORMATION



Ex: DAMRPFEL1SPRGBW / DX8PLEAD10 / PS041

1 - PRODUCT CODE	2 - DRIVER	3 - FINISH	4 - WATTAGE	5 - OPTIC	6 - KELVIN	7 - LEAD CABLE
DAM — DART MEDIUM	RP — Remote Driver	FE — Ferrite Dark Grey HB — Heritage Brown BZ — Bronze WT — White Textured BT — Black Textured SG — Sandstone Grey RAL — Custom RAL	L1 — 34W	SP — SP 17° FL — FL 33° MW — MWFL 47° WF — WFL 58°	RGBW — RGBW	Lead Cable See section for details
8 - OPTIONAL	9 - POWER SUPPLY	10 - CONTROL	11 - OPTICAL ACCESSORIES		12 - INSTALLATION ACCESSORIES	
MG^A — Marine Grade	DMX Power Supply See section for details	DMX Controller See section for details	Filter Holder Ring See section for details Blade Light Linear Spread Lens See section for details Anti-glare Louver See section for details Asymmetric Snoot See section for details		Rotational Bracket See section for details Earth spike See section for details Back Plate See section for details	

^A Marine Grade is recommended for use in environments with occasional exposure to salt air, reclaimed water, fertilizers, chemical cleaners, or frequent pressure washing (steam) cleaning. Fixture housing complete with marine grade cataphoresis suitable for use in marine grade environments. Not to be in direct contact with salt or corrosive agents for extended periods of time.

DART MEDIUM RGBW

7 - LEAD CABLE (REQUIRED)



Direct burial 20-8 lead cable with IP68 quick disconnect.

Length	10ft	25ft	50ft
Part No.	DX8PLEAD10	DX8PLEAD25	DX8PLEAD50

9 – POWER SUPPLY (REQUIRED)

STANDALONE							
Part No.	Wattage	Control	Dim Range	In / Out Voltage	Certification	Dimensions (Standalone)	Description
PS040	50W 850mA 4 Chan	DMX / RDM 1 fixtures max	0%	Universal 120-277VAC	UL CLASS 2	6.00" x 3.00" x 1.20"	EidoLED POWERdrive 561/A1 Class 2 Power Supply, side feed only. UL listed enclosure provided by others.

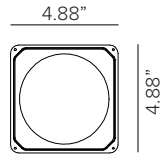
10 – CONTROL (OPTIONAL)

Part No.		Channels	Scenes	Zones	Rating	Voltage	Certification	Dimensions	Description
TGDMXSLES AU9		256	20	1	Indoor	5.5V DC	ETL, UL	5.3"W x 5.5"H x 1.9D	Nicolaudio Slesa smart DMX 1/2 universe programmable controller with easy to use software interface.
TGDMXSLES AU11		1024	5	99	Indoor	5VDC 120V AC Plug in power supply included	ETL	6.3" x 3.6" x 1.8"	Nicolaudio Slesa smart DMX interface, 2 DMX 512 universes, intuitive backlit keyboard programmable controller with easy to use software interface.
TGDMXSTICKDE3B		1024	10	500	Indoor	6-7V DC 120V AC Plug in power supply included	ETL	5.8" x 4.2" x 0.5"	Nicolaudio intelligent control keypad with glass touch sensitive graphic display, stand-alone DMX 512, 2 universe programmable controller with easy to use software interface. Black finish.
TGDMXSTICKDE3W		1024	10	500	Indoor	6-7V DC 120V AC Plug in power supply included	ETL	5.8" x 4.2" x 0.5"	Nicolaudio intelligent control keypad with glass touch sensitive graphic display, stand-alone DMX 512, 2 universe programmable controller with easy to use software interface. White finish.

DART MEDIUM RGBW

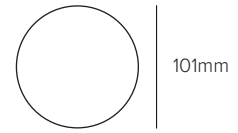
11 – OPTICAL ACCESSORIES (OPTIONAL)

MAXIMUM OF TWO ACCESSORIES PER FIXTURE.



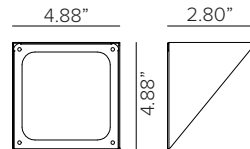
Holder ring. CNC machined anodized and powder coated aluminum. Dimension 4.75in x 4.75in. **Required for use of all filters. Not required for use with 1E3024 or 1E3025.**

Part No. **1E3022** (*)



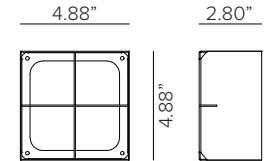
PMMA holographic blade of light linear spread lens filter. This makes the beam take on oval shaped, when combined with spot optic the “blade” appears more prominent. **To be completed with 1E3022 holder ring. Not accounted toward maximum accessory count.**

Part No. **1E3023**



Asymmetric screen. Powder coated stainless steel. **Not compatible with 1E3025.**

Part No. **1E3024** (*)

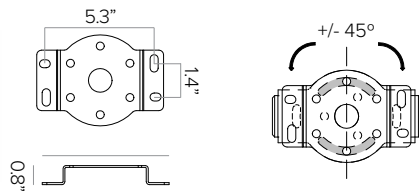


Anti-glare grid. The central elements may be removed to obtain two different levels of glare control. Powder coated stainless steel. **Not compatible with 1E3024.**

Part No. **1E3025** (*)

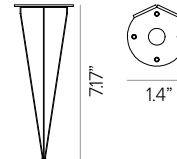
12 – INSTALLATION ACCESSORIES (OPTIONAL)

MAXIMUM OF ONE ACCESSORY PER FIXTURE.



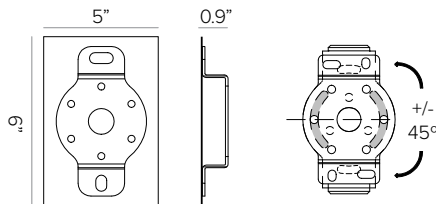
Rotational bracket for surface installation. Powder coated stainless steel.

Part No. **1E3026** (*)



Earth spike. Powder coated stainless steel.

Part No. **1E3028** (*)



Back plate with rotational bracket for wall mount installation. Powder coated stainless steel with Neoprene black foam. Included with 1E3026.

Part No. **1US3026** (*)



Laser pointing system. To be installed by friction on the fixture body. Powder coated stainless steel. Provided with laser. **Not accounted toward maximum accessory count.**

Part No. **1DU3029**

- Ferrite Dark Grey (Default)
- Heritage Brown (HB)*
- Bronze (BZ)*
- White (WT)*
- Black (BT)*
- Sandstone Grey (SG)*

*Add suffix to end of number to identify finish (EX. 1E3026HB)

DART MEDIUM RGBW

PHOTOMETRY

IES FILES WATTAGE AND EFFICIENCY CALCULATIONS BASED WITH SUPPLIED DRIVER

SPOT / RED

		H(m)	D(m)	Emax(lx)
	-			
	-		17°	
Fixture Power	6W	1	0.30	1778
Source Flux	367lm	2	0.59	445
Fixture Flux	281lm	3	0.89	198
Efficacy	44lm/W	4	1.18	111
TS1457	I _{max} =4849cd/klm	I _{max}	1778cd	5 1.48 71

SPOT / GREEN

		H(m)	D(m)	Emax(lx)
	-			
	-		17°	
Fixture Power	9W	1	0.30	2044
Source Flux	422lm	2	0.59	511
Fixture Flux	323lm	3	0.89	227
Efficacy	37lm/W	4	1.18	128
TS1457	I _{max} =4849cd/klm	I _{max}	2044cd	5 1.48 82

SPOT / BLUE

		H(m)	D(m)	Emax(lx)
	-			
	-		17°	
Fixture Power	8W	1	0.30	552
Source Flux	114lm	2	0.59	138
Fixture Flux	87lm	3	0.89	61
Efficacy	11lm/W	4	1.18	34
TS1457	I _{max} =4849cd/klm	I _{max}	552cd	5 1.48 22

SPOT / RGB

		H(m)	D(m)	Emax(lx)
	-			
	-		17°	
Fixture Power	23W	1	0.30	3916
Source Flux	808lm	2	0.59	979
Fixture Flux	618lm	3	0.89	435
Efficacy	27lm/W	4	1.18	245
TS1457	I _{max} =4849cd/klm	I _{max}	3916cd	5 1.48 157

SPOT / RGBW

		H(m)	D(m)	Emax(lx)
	-			
	-		17°	
Fixture Power	31W	1	0.30	6612
Source Flux	1364lm	2	0.59	1653
Fixture Flux	1044lm	3	0.89	735
Efficacy	33lm/W	4	1.18	413
TS1457	I _{max} =4849cd/klm	I _{max}	6612cd	5 1.48 264

SPOT / 5500K

		H(m)	D(m)	Emax(lx)
	-			
	-		17°	
Fixture Power	9W	1	0.30	3217
Source Flux	663lm	2	0.59	804
Fixture Flux	508lm	3	0.89	357
Efficacy	57lm/W	4	1.18	201
TS1457	I _{max} =4849cd/klm	I _{max}	3217cd	5 1.48 129

DART MEDIUM RGBW

PHOTOMETRY

IES FILES WATTAGE AND EFFICIENCY CALCULATIONS BASED WITH SUPPLIED DRIVER

FLOOD / RED



		H(m)	D(m)	Emax(lx)
	-		33°	
Fixture Power	6W	1	0.59	687
Source Flux	367lm	2	1.19	172
Fixture Flux	276lm	3	1.78	76
Efficacy	43lm/W	4	2.38	43
TS1458	I _{max} =1874cd/klm	I _{max}	687cd	5 2.97 27

FLOOD / GREEN



		H(m)	D(m)	Emax(lx)
	-		33°	
Fixture Power	9W	1	0.59	790
Source Flux	422lm	2	1.19	197
Fixture Flux	318lm	3	1.78	88
Efficacy	37lm/W	4	2.38	49
TS1458	I _{max} =1874cd/klm	I _{max}	790cd	5 2.97 32

FLOOD / BLUE



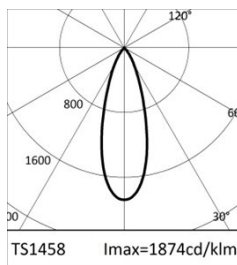
		H(m)	D(m)	Emax(lx)
	-		33°	
Fixture Power	8W	1	0.59	213
Source Flux	114lm	2	1.19	53
Fixture Flux	86lm	3	1.78	24
Efficacy	10lm/W	4	2.38	13
TS1458	I _{max} =1874cd/klm	I _{max}	213cd	5 2.97 9

FLOOD / RGB



		H(m)	D(m)	Emax(lx)
	-		33°	
Fixture Power	23W	1	0.59	1513
Source Flux	808lm	2	1.19	378
Fixture Flux	609lm	3	1.78	168
Efficacy	27lm/W	4	2.38	95
TS1458	I _{max} =1874cd/klm	I _{max}	1513cd	5 2.97 61

FLOOD / RGBW



		H(m)	D(m)	Emax(lx)
	-		33°	
Fixture Power	31W	1	0.59	2555
Source Flux	1364lm	2	1.19	639
Fixture Flux	1028lm	3	1.78	284
Efficacy	33lm/W	4	2.38	160
TS1458	I _{max} =1874cd/klm	I _{max}	2555cd	5 2.97 102

FLOOD / 5500K



		H(m)	D(m)	Emax(lx)
	-		33°	
Fixture Power	9W	1	0.59	1243
Source Flux	663lm	2	1.19	311
Fixture Flux	500lm	3	1.78	138
Efficacy	56lm/W	4	2.38	78
TS1458	I _{max} =1874cd/klm	I _{max}	1243cd	5 2.97 50

DART MEDIUM RGBW

PHOTOMETRY

IES FILES WATTAGE AND EFFICIENCY CALCULATIONS BASED WITH SUPPLIED DRIVER

MEDIUM WIDE FLOOD / RED



		H(m)	D(m)	Emax(lx)
	-			
	-		47°	
Fixture Power	6W	1	0.88	423
Source Flux	367lm	2	1.76	106
Fixture Flux	278lm	3	2.64	47
Efficacy	44lm/W	4	3.52	26
TS1459	I _{max} =1154cd/klm	I _{max}	423cd	5 4.40 17

MEDIUM WIDE FLOOD / GREEN



		H(m)	D(m)	Emax(lx)
	-			
	-		47°	
Fixture Power	9W	1	0.88	486
Source Flux	422lm	2	1.76	122
Fixture Flux	320lm	3	2.64	54
Efficacy	37lm/W	4	3.52	30
TS1459	I _{max} =1154cd/klm	I _{max}	486cd	5 4.40 19

MEDIUM WIDE FLOOD / BLUE



		H(m)	D(m)	Emax(lx)
	-			
	-		47°	
Fixture Power	8W	1	0.88	131
Source Flux	114lm	2	1.76	33
Fixture Flux	86lm	3	2.64	15
Efficacy	11lm/W	4	3.52	8
TS1459	I _{max} =1154cd/klm	I _{max}	131cd	5 4.40 5

MEDIUM WIDE FLOOD / RGB



		H(m)	D(m)	Emax(lx)
	-			
	-		47°	
Fixture Power	23W	1	0.88	932
Source Flux	808lm	2	1.76	233
Fixture Flux	613lm	3	2.64	104
Efficacy	27lm/W	4	3.52	58
TS1459	I _{max} =1154cd/klm	I _{max}	932cd	5 4.40 37

MEDIUM WIDE FLOOD / RGBW



		H(m)	D(m)	Emax(lx)
	-			
	-		47°	
Fixture Power	31W	1	0.88	1574
Source Flux	1364lm	2	1.76	393
Fixture Flux	1035lm	3	2.64	175
Efficacy	33lm/W	4	3.52	98
TS1459	I _{max} =1154cd/klm	I _{max}	1574cd	5 4.40 63

MEDIUM WIDE FLOOD / 5500K



		H(m)	D(m)	Emax(lx)
	-			
	-		47°	
Fixture Power	9W	1	0.88	766
Source Flux	663lm	2	1.76	191
Fixture Flux	504lm	3	2.64	85
Efficacy	57lm/W	4	3.52	48
TS1459	I _{max} =1154cd/klm	I _{max}	766cd	5 4.40 31

DART MEDIUM RGBW

PHOTOMETRY

IES FILES WATTAGE AND EFFICIENCY CALCULATIONS BASED WITH SUPPLIED DRIVER

WIDE FLOOD / RED



		H(m)	D(m)	Emax(lx)
	-		58°	
Fixture Power	6W	1	1.12	317
Source Flux	367lm	2	2.23	79
Fixture Flux	277lm	3	3.35	35
Efficacy	43lm/W	4	4.46	20
TS1460	I _{max} =864cd/klm	I _{max}	317cd	5 5.58 13

WIDE FLOOD / GREEN



		H(m)	D(m)	Emax(lx)
	-		58°	
Fixture Power	9W	1	1.12	364
Source Flux	422lm	2	2.23	91
Fixture Flux	318lm	3	3.35	40
Efficacy	37lm/W	4	4.46	23
TS1460	I _{max} =864cd/klm	I _{max}	364cd	5 5.58 15

WIDE FLOOD / BLUE



		H(m)	D(m)	Emax(lx)
	-		58°	
Fixture Power	8W	1	1.12	98
Source Flux	114lm	2	2.23	25
Fixture Flux	86lm	3	3.35	11
Efficacy	10lm/W	4	4.46	6
TS1460	I _{max} =864cd/klm	I _{max}	98cd	5 5.58 4

WIDE FLOOD / RGB



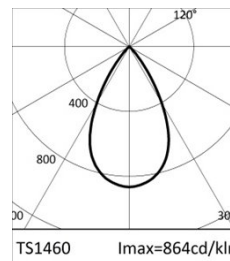
		H(m)	D(m)	Emax(lx)
	-		58°	
Fixture Power	23W	1	1.12	698
Source Flux	808lm	2	2.23	174
Fixture Flux	609lm	3	3.35	78
Efficacy	27lm/W	4	4.46	44
TS1460	I _{max} =864cd/klm	I _{max}	698cd	5 5.58 28

WIDE FLOOD / RGBW



		H(m)	D(m)	Emax(lx)
	-		58°	
Fixture Power	31W	1	1.12	1178
Source Flux	1364lm	2	2.23	295
Fixture Flux	1029lm	3	3.35	131
Efficacy	33lm/W	4	4.46	74
TS1460	I _{max} =864cd/klm	I _{max}	1178cd	5 5.58 47

WIDE FLOOD / 5500K



		H(m)	D(m)	Emax(lx)
	-		58°	
Fixture Power	9W	1	1.12	573
Source Flux	663lm	2	2.23	143
Fixture Flux	501lm	3	3.35	64
Efficacy	56lm/W	4	4.46	36
TS1460	I _{max} =864cd/klm	I _{max}	573cd	5 5.58 23