

8'-30'

Round Tapered Direct Burial

Specifications and Features:

- 8' to 30' mounting heights (16' - 30' tapered only)
- For single or multiple luminaire mounting
- Luminaires may be mounted on tenons, brackets or shaft may be drilled to manufacturer's mounting specifications

Shaft

Direct Embedment

Unless otherwise specified, the length of the embedded section of a 4" diameter is 3', 5" and 6" shaft is 4', and 7" and 8" shaft is 5'. A 1 1/2" diameter grommetted wire inlet hole located 1' 6" below grade is included. The embedded section of the standard is coated inside and outside with zinc-rich paint.

Ground Lug

The ground lug is a tab that is welded to the inside of the shaft, has a tapped 3/8" -16 hole to accommodate the ground connector, and is located opposite the hand hole or wire inlet hole.

Tenons

T300=Standard for post top (2 7/8" OD x 3" tall)

T355=Standard for shepherd's crooks (2 7/8" OD x 5.5" tall)

CAP=No tenon, removable cap

Finish - Super Durable Polyester TGIC Powder Coat

- Standard finishes: high gloss black, textured black, high gloss white, medium bronze, dark bronze, green, gray, silver metallic
- Premium finishes (adder): Verde patina, pewter patina, silver sparkle, semi-gloss or matte black, satin brushed
- Custom and Marine-grade finishes are available. All RAL colors are available to match (adder).

Accessories (Adder)

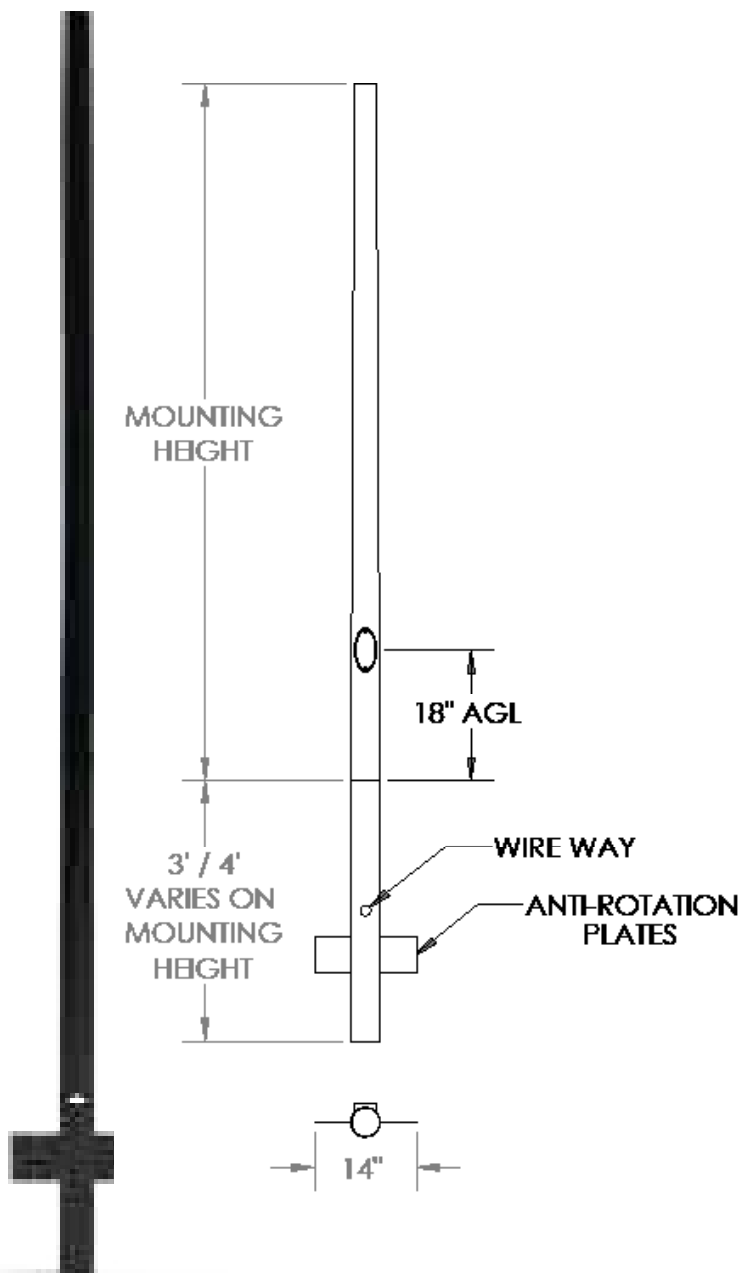
GFIC=Weatherproof GFI in-use cover, cast aluminum (must indicate location)

GFIP=Weatherproof GFI in-use cover, plastic (must indicate location)

USB=Dual USB port (must indicate location)

HH=Handhole

ARD=Anti-Rotation Device



8'-30'

Round Tapered Direct Burial

Order Information Example:

53-12-M-S-125-T300-N-SB

		M	S				
Diameter	Height	Style	Pole Type	Wall Size	Tenon	Accessories (Adder)	Finish
43=4"-3" Tapered 53=5"-3" Tapered 64=6"-4" Tapered 74=7"-4" Tapered 84=8"-4" Tapered	8=8' 10=10' 12=12' 14=14' 16=16' 18=18' 20=20' 25=25' 30=30'	M=Direct Burial	S=Smooth	Refer to Chart	T300=2 7/8" OD x 3" Tall T355=2 7/8" OD x 5.5" Tall CAP=Removable cap, no tenon N=None	N=None GFIC=GFI in-use cover, cast aluminum* GFIP=GFI in-use cover, plastic* USB=Dual USB port* HH=Handhole ARD=Anti-Rotation Device *Please indicate location	BK=Black BZ=Bronze DBZ=Dark Bronze WH=White GR=Green SM=Silver Metallic GY=Light Gray TBK=Textured Black <i>Premium Colors (adder)</i> SB=Satin Brushed VP=Verde Patina SS=Silver Sparkle PP=Pewter Patina CC=Custom Color (Consult Factory)

POLES		TYPICAL WEIGHT AND ALLOWABLE SIZE OF LUMINAIRES*						DIMENSIONS OF STANDARDS				
MODEL NUMBER	MOUNT HEIGHT	LUMINAIRE WEIGHT-LBS	EFFECTIVE PROJECTED AREA-SQ FT-AT:					EXPOSED HEIGHT	SHAFT LENGTH	TOP	BUTT	WALL
			70 MPH	80 MPH	90 MPH	100 MPH	110 MPH					
438-M/125	8'	75	19.1	14.4	11.1	8.8	7.1	7' 8"	10' 8"	3"	4"	.125
4310-M/125	10'	75	14.3	10.6	8.1	6.3	5.0	9' 8"	12' 8"	3"	5"	.125
4312-M/125	12'	75	11.0	8.0	6.0	4.5	3.5	11' 8"	14' 8"	3"	4"	.125
5312-M/125	12'	75	18.5	13.8	10.5	8.3	6.6	11' 8"	15' 8"	3"	5"	.125
4314-M/125	14'	75	8.5	6.0	4.4	3.2	2.4	13' 8"	16' 8"	3"	4"	.125
5314-M/125	14'	75	14.8	10.8	8.2	6.3	5.0	13' 8"	17' 8"	3"	5"	.125
4316-M/125	16'	75	7.1	5.0	3.5	2.4	1.7	15' 8"	18' 8"	3"	4"	.125
5316-M/125	16'	75	12.0	8.6	6.4	4.8	3.8	15' 8"	19' 8"	3"	5"	.125
5316-M/156	16'	75	15.3	11.1	8.4	6.5	5.1	15' 8"	19' 8"	3"	5"	.156
5318-M/125	18'	75	9.7	6.7	4.9	3.6	2.7	17' 8"	21' 8"	3"	5"	.125
5318-M/156	18'	150	12.2	8.7	6.4	4.8	3.8	17' 8"	21' 8"	3"	5"	.156
5318-M/188	18'	150	19.1	14.1	10.8	8.5	6.9	17' 8"	21' 8"	4"	6"	.188
5320-M/125	20'	150	8.2	5.5	3.8	2.6	1.9	19' 8"	23' 8"	3"	5"	.125
5320-M/156	20'	150	10.4	7.2	5.1	3.7	2.8	19' 8"	23' 8"	3"	5"	.156
6425-M/156	25'	150	10.5	7.1	5.1	3.8	2.9	24' 8"	28' 8"	4"	6"	.156
6425-M/188	25'	150	13.5	9.4	6.9	5.3	4.2	24' 8"	28' 8"	4"	6"	.188
7430-M/156	30'	150	11.1	7.5	5.3	4.0	3.0	29' 8"	34' 8"	4"	7"	.156
8430-M/188	30'	150	16.7	12.0	9.1	7.0	5.5	29' 8"	34' 8"	4 1/2"	8"	.188