

# NOC-2.5R

NONI 2.5" ROUND CYLINDER FAMILY

DATE:	LOCATION:
TYPE:	PROJECT:
CATALOG #:	

## FEATURES

- Downlight and Lensed Wall Wash
- Cast aluminum, magnetically-attached reflectors with applied finishes
- Interchangeable primary optics for Downlight
- Up to 1700 delivered lumens @ 80 CRI 3000K
- 90 CRI (27, 30, 35, 40K); 80 CRI (30, 35K)



## CONTROLS



## SPECIFICATIONS

### CONSTRUCTION

- Machined, extruded aluminum body with no visible hardware from below
- Downlight (DL) & Lensed Wall Wash (LW) functions feature reflectors and optics from recessed portfolio
- Surface mount (SU) ¼" Overlap flange fully covers junction box
- Cylinder assembly includes cylinder body & reflector insert, both matte finish. Insert attaches to collar via magnets. Can be mixed/matched as desired. Gasket centers insert and prevents light leaks
- Canopy finish will match housing specification
- Conduit Canopy utilizes a patent pending mounting yoke to secure cylinder to the ceiling surface

### OPTICS

- Static white fixtures feature low profile, high efficiency polycarbonate TIR primary optics for (DL) function
- Optics installed and serviceable from below through housing aperture
- Media holder included standard. Accepts 1 reflector accessory. Matte black finish, reduces visual brightness at top of trim

### ELECTRICAL

- Integral LED module and driver are field serviceable
- Chip-on-board LED. 2 SDCM CCT consistency LED rated life L70 at >55,000 hours (TM-21)
- LED rated life L85 @ 50,000 hours (TM-21)
- Integral solid state constant current dimming driver. 1% and Dim-to-Dark options for 0-10V, ELV and TRIAC controls. NX control options available
- Drivers are UL Class 2, inherent short circuit and overload protection. RoHS compliant

### INSTALLATION

- Available in Surface, Rigid Stem, Swivel Stem, and Cord/Cable mounting types
- Conduit Canopy options (CC, CY) allow field selectable conduit entry (up to 4@ 90°) to allow surface-mounted conduit to pass through luminaire
- Standard and custom pendant lengths available Rigid (PR) and Swivel (P) stems. ¼ NPS, schedule 40, 6063-T6 aluminum pipe
- Swivel stem (P) allows for sloped ceilings up to 35°
- Cord/Cable (CM) can be cut in field to custom length. ¼" galvanized cable with 4 or 5 18AWG wires depending on configuration. Available with black or white jacket

### CERTIFICATIONS

- cULus certified to UL 1598
- Suitable for damp locations
- Install in environments where ambient temperature does not exceed 25°C

### WARRANTY

- 5 year warranty



KEY DATA	
Wattages	25, 17, 10
Beam Spreads	25, 30, 35, 55, 75
SDCM	2
Rated Life	L85 @ > 55,000 Hours

# NOC-2.5R

NONI 2.5" ROUND CYLINDER FAMILY

DATE:	LOCATION:
TYPE:	PROJECT:
CATALOG #:	

## ORDERING GUIDE

Examples: NOC-2.5RDL-CHNCSP17-930K-MD-DM1NU-BL / NOC-2.5RDL-TRM-RGT-SOL

CATALOG #	
-----------	--

### HOUSING

NOC-2.5R		CHN					
Series	Function	Housing	Canopy	Mounting		Output	CRI/CCT
NOC-2.5R Noni Cylinder 2.5" Round	DL Downlight	CHN Cylinder Housing	CS Standard	PR	Rigid Stem, Standard <sup>1</sup>	10 10 Watt	927K 90 CRI, 2700K
	LW Lensed Wall Wash		CX Standard with controls	PR_	Rigid Stem, Custom <sup>1</sup>	17 17 Watt	930K 90 CRI, 3000K
			CC Conduit	P	Swivel Stem, Standard <sup>1</sup>	25 25 Watt	935K 90 CRI, 3500K
			CY Conduit with Controls	P_	Swivel Stem, Custom <sup>1</sup>		940K 90 CRI, 4000K
				CMBL	6ft Black Cord with cable <sup>2</sup>		830K 80 CRI, 3000K
				CMWH	6ft White Cord with Cable <sup>2</sup>		835K 80 CRI, 3500K
				CM15BL	15ft Black Cord with cable <sup>2</sup>		
				CM15W	15ft White Cord with Cable <sup>2</sup>		
				SU	Surface		

Beam Spread <sup>3</sup>		Dimming		Controls		U	Cylinder Housing Color	
VN Very Narrow (44 SC / 25°)		DM1 0–10V 1% <sup>6,12</sup>		N None		U Universal Voltage (120–277V)	Texture	
NR Narrow (48 SC / 30°)		PDM ELV, TRIAC 1% <sup>12</sup>		NXE NX Dual RJ45 SmartPORTS, without Sensor <sup>6,7</sup>			WH White	
MD Medium (.56 SC / 35°)		ERP 0–10V, ELV, TRIAC Dim-to-Dark <sup>6</sup>		NXW NX Networked Wireless Radio Module NXRM2 and Bluetooth Programming, without Sensor <sup>6,7,13</sup>			GY Gray	
WD Wide (.82 SC / 50°)		PEQOE Lutron Hi-Lume Premier 0.1%					BL Black	
XW Extra Wide (1.10 SC / 75°) <sup>4</sup>							GT Graphite	
LW Lensed Wall Wash <sup>5</sup>							PP Pink Panache	
							GH Grasshopper	
							Smooth	
							WHS White	
							GYS Gray	
							BLS Black	
							COS Copper	
							AMW Anti-Microbial White	
							Other	
							X Custom Finish	

### TRIM

NOC-2.5R		TRM	Reflector Insert Color		Lens	
Series	Function	Trim	Texture			
NOC-2.5R Noni Cylinder 2.5" Round	DL Downlight	TRM Trim	RWH White		SOL Solite <sup>10</sup>	
	LW Lensed Wall Wash		RGY Gray		CLR Clear <sup>10</sup>	
			RBL Black		FRS Frosted <sup>11</sup>	
			RGT Graphite		LIN Linear Spread (10 x 40°) <sup>10</sup>	
			RPP Pink Panache		HEX Hexcel Louver <sup>10</sup>	
			RGH Grasshopper		NON No Lens <sup>10</sup>	
			Smooth			
			RWHS White			
			RGYS Gray			
			RBLs Black			
			RCOS Copper			
			RAMW Anti-Microbial White			
			Other			
			RX Custom Finish			

#### Notes:

- Stem length varies by canopy configuration. See Dimensions section for details
- Cable/Cord can be cut in the field to custom length
- DL Performance based on SOL lens with RWHS insert finish
- Available only with FRS lens
- Available only when LW functions selected
- DM1 or ERP required with NX options
- Must specify CX or CY canopy
- Available only with DL function
- Available with all functions. Must be selected with LW
- Available with 25 or 17 watt only
- Not compatible with SU mounting

## PERFORMANCE DATA

Performance data provided below based on 80 CRI, 3000K with White reflector and Solite lens. Extra Wide (XW) and Lensed Wall Wash (LW) performance includes White reflector and Frosted lens.

Output	Beam Spread	Beam	Delivered Lumens	Efficacy	Spacing Criterion	Candela @ 0°
25 Watt	Very Narrow (VN)	25	1626	64	0.44	5884
	Narrow (NR)	30	1563	62	0.48	4844
	Medium (MD)	35	1435	57	0.56	3438
	Wide (WD)	55	1734	69	0.82	2200
	Extra Wide (XW)	75	1186	47	1.10	844
17 Watt	Very Narrow (VN)	25	1227	71	0.44	4472
	Narrow (NR)	30	1180	68	0.48	3682
	Medium (MD)	35	1084	63	0.56	2613
	Wide (WD)	55	1309	76	0.82	1672
	Extra Wide (XW)	75	895	52	1.10	641
10 Watt	Very Narrow (VN)	25	762	75	0.44	2771
	Narrow (NR)	30	733	72	0.48	2282
	Medium (MD)	35	673	66	0.56	1619
	Wide (WD)	55	813	80	0.82	1036
	Extra Wide (XW)	75	556	55	1.10	397

Output	Beam Spread	Delivered Lumens	Efficacy	Max Candela
25 Watt	Wall Wash (LW)	914	36	649
17 Watt	Wall Wash (LW)	690	40	493
10 Watt	Wall Wash (LW)	429	42	306

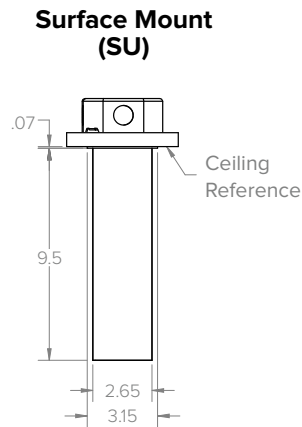
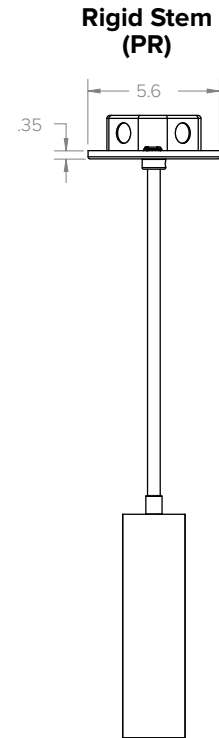
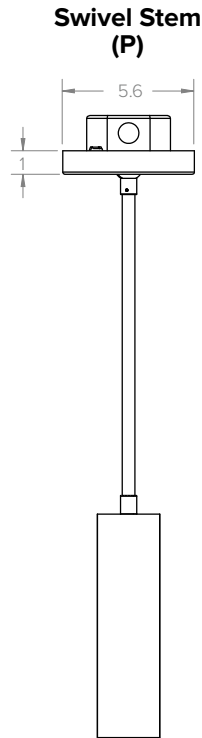
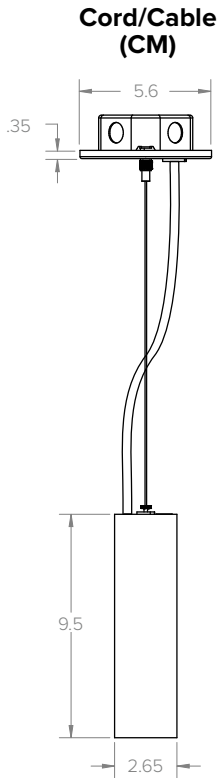
**MULTIPLIER TABLE**

CRI, CCT	927	930	935	940	830	835					
	0.83	0.86	0.87	0.87	1.0	1.02					
Media	SOL	CLR	LIN	HEX	FRS	NON					
	1.0	1.02	0.91	0.71	0.73	1.12					
Output	10 Watt	17 Watt	25 Watt								
	0.47	0.76	1.0								
Finishes	RWH	RGY	RBL	RGT	RPP	RGH	RWHS	RGYS	RGBLS	RCOS	RAMW
	1.0	0.9	0.85	0.85	0.8	0.8	1.02	0.95	0.9	0.8	1.05

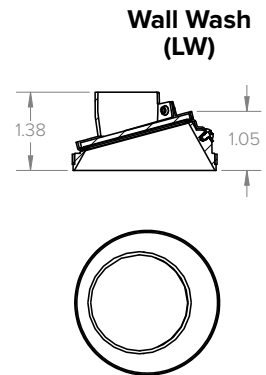
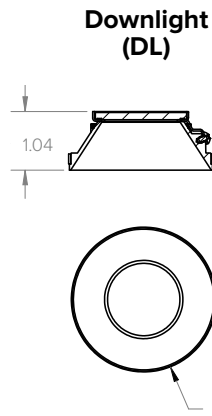
**ELECTRICAL DATA**

	DM1	PDM	ERP	PEQ0E
Dimming Protocols Supported	0–10V	ELV, TRIAC	0–10V, ELV, TRIAC	Lutron Hi-Lume Premier 0.1%
Input Voltage	120–277V	120–277V	120–277V	120–277V
Input Frequency	50/60 Hz	50/60 Hz	50/60 Hz	50/60 Hz
Dim Level	20W <1% 17W <5%	1%	1% Dim-to-Dark	0.1% Dim-to-Dark
Power Factor (PF)	≥0.90	≥0.90	≥0.90	0.95 Typical
Total Harmonic Distortion (THD)	<20%	<20%	<20%	15% Typical
Inrush Current	NEMA 410 Limit	NEMA 410 Limit	NEMA 410 Limit	NEMA 410 Limit
Electromagnetic Interference (EMI) Filtering	FCC CFR Title 47 Part 15 Class B	FCC CFR Title 47 Part 15 Class B	FCC CFR Title 47 Part 15 Class B at 120Vac, Class A at 277Vac	Contact Lutron
Transient Surge Protection	IEEE C62.411-2002 & C62.412-2002 Category A	IEEE C62.411-2002 & C62.412-2002 Category A	IEEE C62.411-2002 & C62.412-2002 Category A	Contact Lutron

**DIMENSIONS**

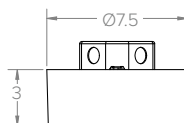


**Reflector Insert**

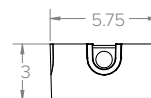


**Additional Canopy Options**

**Standard w/ Controls (CX)**



**Conduit (CC)**



**Conduit w/ Controls (CY)**

