



LED FLAT PANEL



PRODUCT DESCRIPTION

LED flat panel is designed for standard T-bar and narrow grid drop ceiling to replace fluorescent fixtures in offices, supermarkets, schools and other indoor applications. The edge-to-edge design enables even light distribution, simple but beautiful and easy for installation. Energy saving, long life span and low maintenance.

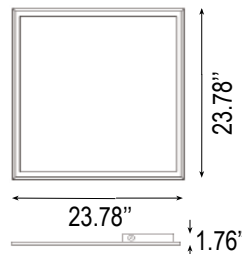
ELECTRICAL SYSTEM

- Input voltage: 120-277V
- 50/60Hz
- Class 2 driver
- Power Factor: >0.9
- Total Harmonic Distortion: <20% at full load
Working Temperature: -20~40°C (-4~104°F)
- Short Circuit Protection and LED Disconnection Protection

SPECIFICATION

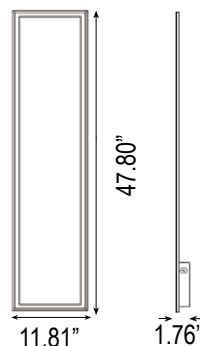
2X2

Length: 23.78"
 Width: 23.78"
 Height: 1.76"
 Max. Weight: 8.8 lbs



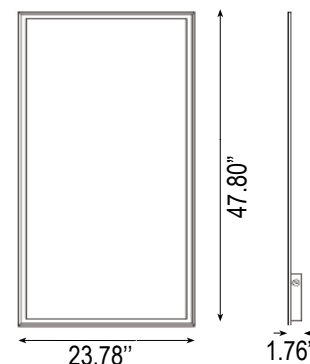
1X4

Length: 47.80"
 Width: 11.81"
 Height: 1.76"
 Max. Weight: 8.8 lbs



2X4

Length: 47.80"
 Width: 23.78"
 Height: 1.76"
 Max. Weight: 17.6 lbs



PERFORMANCE

CRI

80

CCT

3000K、3500K、4000K、5000K

Dimming

1-10V Dimming Standard

Projected Lifetime

L70 -72,000 Hours

Working Temperature

-4-104°F (-20-40°C)

Certifications

- DLC qualified
- Suitable for dry locations
- Type IC Rated, suitable for insulated ceilings
- RoHS compliant

Ordering Information

Example: FLP22D3835

Flat LED Panel	Dimension	Dimmable	Watts	CCT	EBU
FLP	22 - 2x2'	D - 1-10V dimming	38 - 38W	30 - 3000K	EBU - Emergency Battery Back-up ¹
				35 - 3500K	
	14 - 1x4'		38 - 38W	40 - 4000K	
				50 - 5000K	
	24 - 2x4'		38 - 35W		
			53 - 53W		

Notice:

1. Emergency battery backup is available in 5W with about 640lm @ 5000K. The EBU is Title 20 compliant.

* Standard Finish as White. Special Order as other finish color - Ask Customer Service for Details

Accessories (Ordered separately)



90106

FLP 2*2 Surface Mount Kit
2*2 Flat Panel Surface Mount Kit



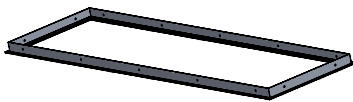
90122

FLP 1*4 Surface Mount Kit
1*4 Flat Panel Surface Mount Kit



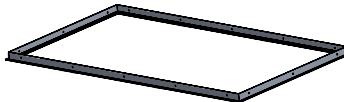
90123

FLP 2*4 Surface Mount Kit
2*4 Flat Panel Surface Mount Kit



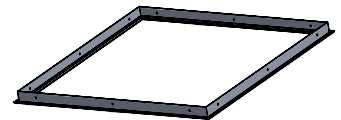
90139

FLP 1*4 Flange Kit
1*4 Flat Panel Recessed Mount Kit



90140

FLP 2*4 Flange Kit
2*4 Flat Panel Recessed Mount Kit

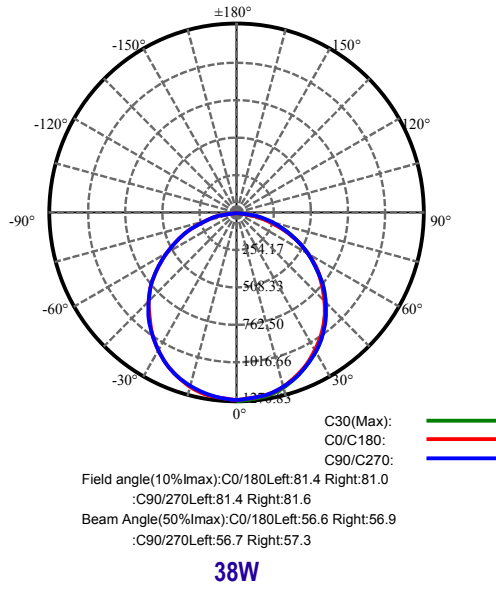


90141

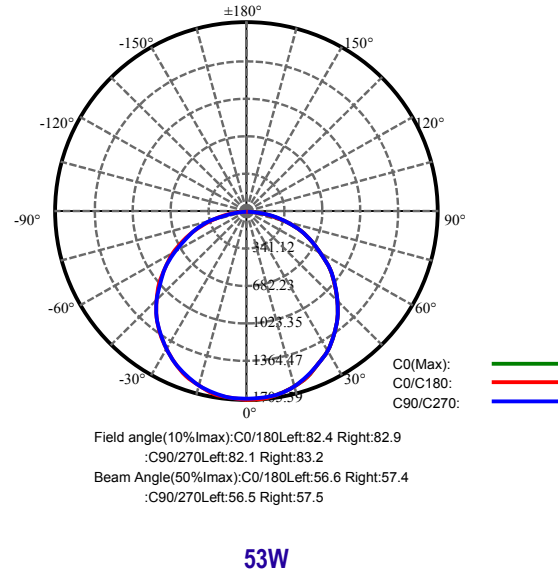
FLP 2*2 Flange Kit
2*2 Flat Panel Recessed Mount Kit

PHOTOMETRY

All published luminaire photometric testing performed to IESNA LM-79-08 standards by a NVLAP certified laboratory.



60°



PERFORMANCE DATA

LUMEN OUTPUT

Lumen values are measured by third party certified laboratories performed in accordance with IESNA LM-79-08 as well as Lighting Facts listed.

Watts	Lumen Output	AC Input 120V	Measured Watts	CCT	CRI	Size	LPW
38W	4180	0.35A	38W	5000K	>80	2x2	110
38W	4180	0.35A	38W	5000K	>80	1x4	110
38W	3850	0.33A	35W	5000K	>80	2x4	110
53W	5830	0.49A	53W	5000K	>80	2x4	110

Lumen Ambient Temperature (LAT) Multipliers

Use these factors to determine relative lumen output for average ambient temperature from -4-104°F (-20-40°C)

Ambient		Multiplier
Celsius	Fahrenheit	
0	32	1.02
10	50	1.01
20	68	1.00
25	77	1.00
30	86	1.00
40	104	0.99

Projected LED Lumen Maintenance

Data references the extrapolated performance projections for the LED Flat Panel in a 77°F ambient, (tested per IESNA LM-80-08 and projected per IESNA TM-21-11).

Operating Hours	Lumen Maintenance Factor				
	0	3,000	7,000	16,000	72,000
Lumen Maintenance Factor	1.0	0.98(L98)	0.96(L96)	0.92(L92)	0.70(L70)

Warranty

Five year limited warranty. Full warranty terms located at www.aboveallLighting.com/warrantystatements

Note:

Specifications subject to change without notice.