

SMT LED AREA LIGHT



PRODUCT DESCRIPTION

The SMT series distills the benefits of the latest in LED technology into a high performance, high efficacy, long-life luminaire. The outstanding photometric performance results in sites with excellent uniformity, greater pole spacing and lower power density. It is a better alternative for traditional street and area lighting with quick payback and improved performance. It is widely used for Roadway, parking lots, walkways and general area spaces.

FEATURE

- Low profile design, minimizing wind load.
- Heavy duty construction with die casting aluminum housing.
- Polycarbonate with tempered glass lens doesn't fade and discolor.
- Versatile mounting options for square pole, round pole and wall mounting.
- Option of controls for maximum energy savings.
- Full distributions to cover various applications.
- Integral 10kV surge suppression protection.

ELECTRICAL SYSTEM

- Input Voltage: 100-277V, 347-480V, 50/60Hz
- Power Factor : > 0.9 at 120V
- Total Harmonic Distortion: < 20% at 120V
- Integral 10kV surge suppression protection standard.
- Minimum Ambient -40°F, maximum ambient 122°F

PERFORMANCE

CRI

70+

CCT

3000K、 4000K、 5000K

Dimming

0-10V Dimming Standard

Projected Lifetime

L70 - 127,000 Hours

Working Temperature

-40-122°F (-40-50°C)

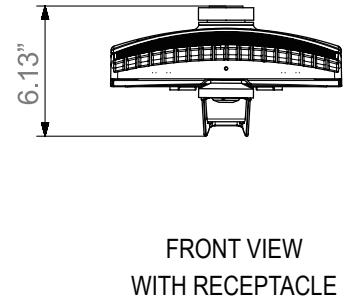
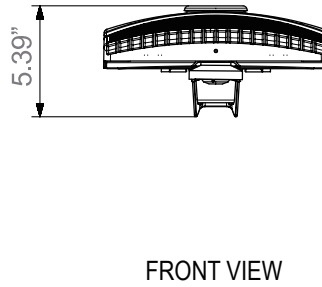
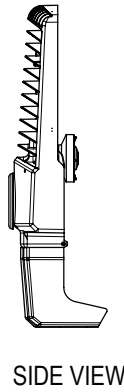
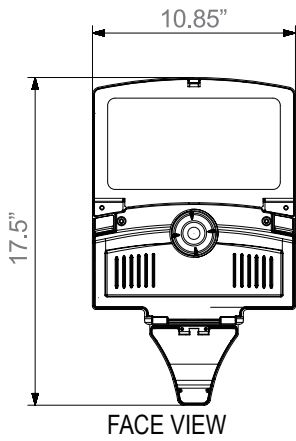
Certifications

- ETL listed
- IP66 rated
- DLC Premium qualified
- RoHS compliant

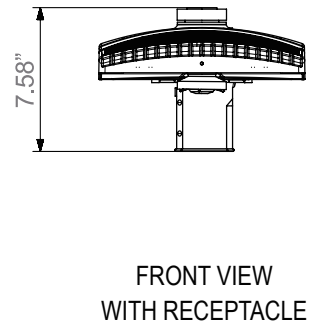
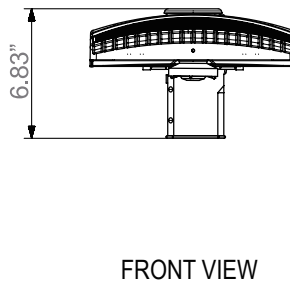
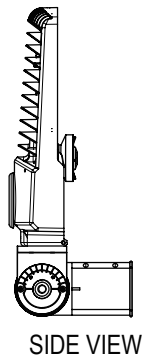
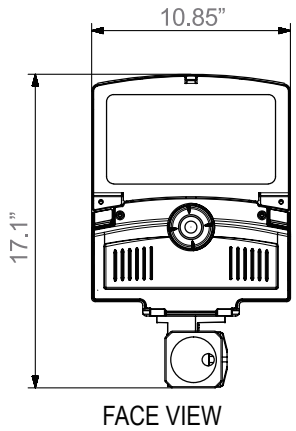
SPECIFICATION

Approximate Net Weight	10 lbs
Dimension W/O Mounting Brackets (L*W*H):	13.20"*10.85"*3.20"
Effective Project Area (EPA)	-with Arm, EPA = 0.53 ft ²
	-with Slipfitter, EPA = 0.55 ft ²
	-with Trunnion, EPA = 0.47 ft ²
	-with Wall Bracket, EPA=0.324ft ²

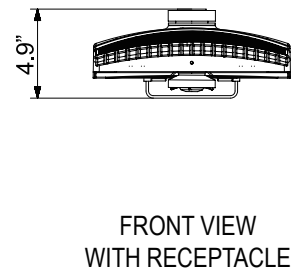
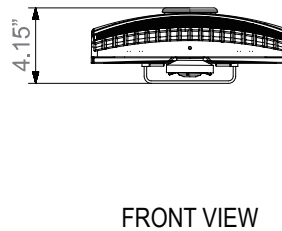
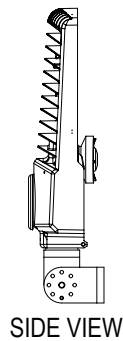
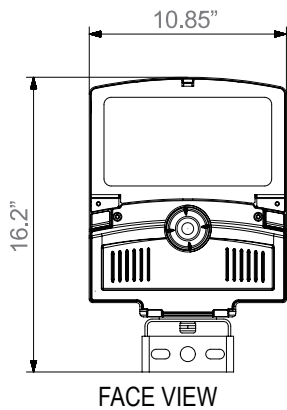
Arm Mount



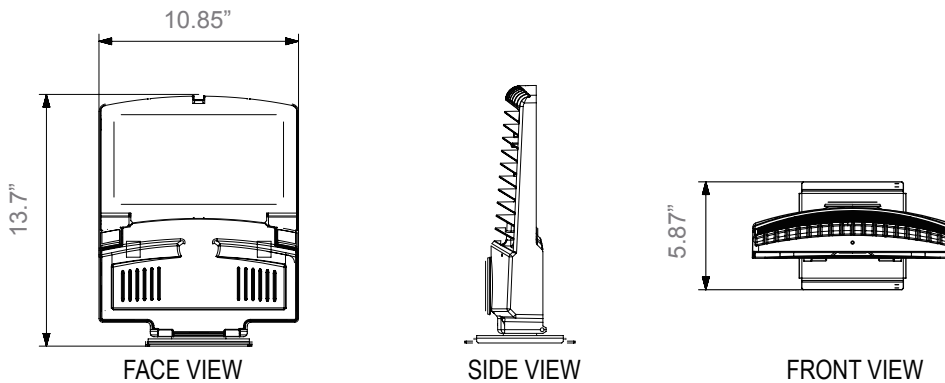
Slipfitter Mount



Trunnion Mount



Wall Mount



Ordering Information

Example: SMT40401-7P-SAR-T2

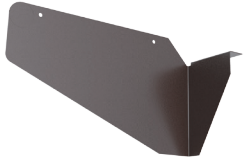
SMT	Watts	CCT	Voltage	Control	Installation	Distribution	Finish
SMT	40 - 40W	30 - 3000K	1 - 120-277V	Blank - None	SAR - Square Pole Arm ⁷	T2 - Type II	Standard Blank - Dark Bronze
		40 - 4000K	2 - 347V ¹	MS-L3B - Wattstopper		T3 - Type III	
		50 - 5000K	6 - 120-347V ³	Sensor with Black L3 Lens ⁴	TR - Trunnion	T4 - Type IV	
	60 - 60W		1 - 120-277V	PC - Photoelectric Control	SF - Slip Fitter ⁶	T5 - Type V	Optional*
	80 - 75W		2 - 347V ¹	7P - 7 Pin Receptacle ⁵	WM - Wall Mount		AL - Aluminum Silver
	85 - 85W		3 - 480V ²				BK - Black
			6 - 347/480V ³				WH - White (See Notes)

Notes:

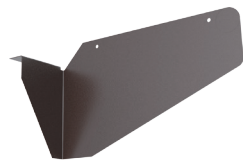
- 347V is only used with photoelectric control .
- 480V is only used with photoelectric control.
- 347/480 is available for 60W/75W/85W. If for 40W, it is 120-347V. Besides, 120-347V and 347/480V are not available for photoelectric control.
- The standard MS L3 lens is suitable for the mounting height of 20ft (6m) Max. If higher than 20ft (6m), please contact Customer Service to choose L7 lens. Wattstopper sensor is NOT available for 120-347V and 347/480V.
- Shorting cap included.
- The slip fitter fits a 2 3/8" O.D. tenon or pole.
- If for round pole mount, a separate round pole adapter need to be bought. Please check the following accessory table for details.

* Standard Finish is Dark Bronze. Allow 4-6 weeks for optional finish. Additional charge will apply.

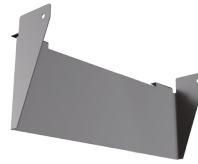
Accessories (Ordered separately/field install)



90405
SMT-RSS
Right side shield for SMT



90406
SMT-LSS
Left side shield for SMT



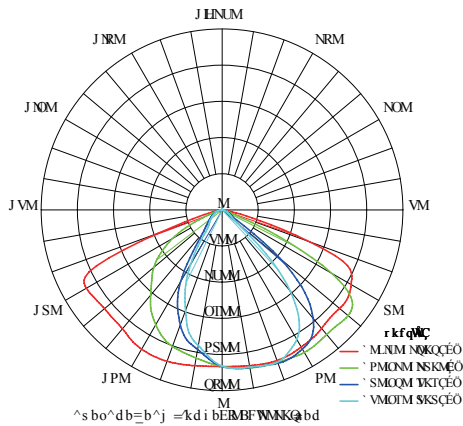
90786
SMT-BSS
Back side shield for SMT



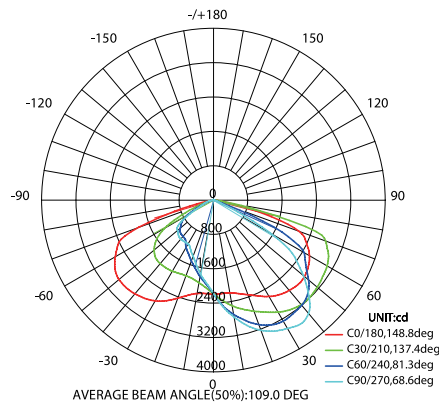
90204
SMT-RPA
Round pole adapter for SMT

PHOTOMETRY

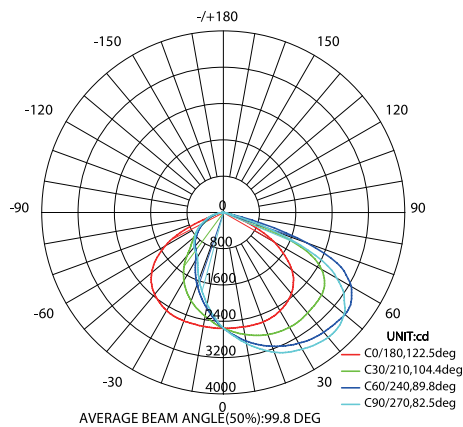
All published luminaire photometric testing performed to IESNA LM-79-08 standards by a NVLAP certified laboratory.



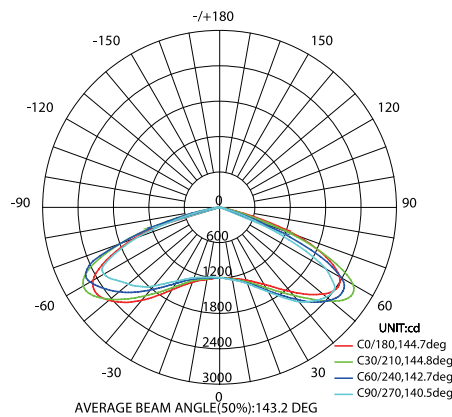
Type II



Type III



Type IV



Type V

PERFORMANCE DATA

LUMEN OUTPUT

Lumen values are measured by goniophotometers system

Nominal Watts	Measured Watts	Lumen Output	AC Input 120V	CRI	Dist. Type	CCT	LPW
40W	42W	5155lm	0.35A	>70	Tyep III	4000K	123
60W	62W	7200lm	0.52A	>70	Tyep III	4000K	116
80W	75W	8862lm	0.62A	>70	Tyep III	4000K	118
85W	85W	10285lm	0.71A	>70	Tyep III	4000K	121

Lumen Ambient Temperature (LAT) Multipliers

Use these factors to determine relative lumen output for average ambient temperature from -40-122°F (-40-50°C).

Ambient		Multiplier
Celsius	Fahrenheit	
0	32	1.02
10	50	1.01
20	68	1.00
25	77	1.00
30	86	1.00
40	104	0.99

BUG RATING

Performed to IESNA LM-79-08 standards by a NVLAP accredited laboratory

Model	BUG Rating
SMT40401-T2	B2-U0-G1
SMT40401-T3	B1-U0-G1
SMT40401-T4	B1-U0-G1
SMT40401-T5	B2-U0-G1
SMT60401-T2	B3-U0-G1
SMT60401-T3	B2-U0-G1
SMT60401-T4	B2-U0-G1
SMT60401-T5	B3-U0-G1
SMT80401-T2	B3-U0-G2
SMT80401-T3	B2-U0-G2
SMT80401-T4	B2-U0-G1
SMT80401-T5	B3-U0-G1
SMT85301-T2	B3-U0-G2
SMT85301-T3	B2-U0-G2
SMT85301-T4	B2-U0-G2
SMT85301-T5	B3-U0-G3

SMT LED RATED LIFE

Performed to ISTMT standards

Ambient Temp in	73°F	104°F	113°F	122°F
85W Rated Life	100,000H	100,000H	90,000H	65,000H

System Wattage	Max THD (%)	Power Factor(at 120Vac)	Replaces/ Equiv.(HPS)
40W	20	>0.9	70-100W
60W	20	>0.9	100-150W
75W	20	>0.9	150-200W
85W	20	>0.9	250-400W



SMT with Arm Mount



SMT with Trunnion Mount



SMT with Slipfitter Mount



SMT with Wall Mount



SMT with right side shield



SMT with left side shield



SMT with back side shield

Warranty

Five year limited warranty. Full warranty terms located at www.abovealllighting.com/warrantystatements/

Note:

Specifications subject to change without notice.