

Dome Top

Flat Top

Peak Top

STANDARD LED BOLLARD



PRODUCT DESCRIPTION

The Standard LED Bollard is designed with a modern cylindrical shape with dome, flat, and peak tops available. This LED Bollard is constructed with a high-quality extrusion aluminum body and a clear polycarbonate lens. This Bollard is ideal for parks, lawns, plazas, and residential applications.

FEATURE

- Dome, flat and peak tops for option
- High quality extrusion aluminum body
- Stainless steel silicone rubber sealing
- IP 66 rated for wet location
- Side shield for option

ELECTRICAL SYSTEM

- Input Voltage: 120-277V
- 50/60Hz
- Minimum Ambient -40°F, maximum ambient 104°F
- Power Factor: > 0.9 @120Vac
- Total Harmonic Distortion: < 20%

SPECIFICATION

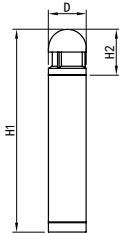
Dome Top

D: 7.90"

H1: 42.10"

H2: 9.53"

Max Weight: 18.3lbs



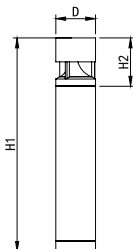
Flat Top

D: 7.90"

H1: 42.10"

H2: 9.53"

Max Weight: 18.3lbs



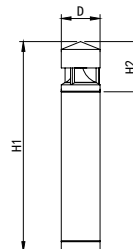
Peak Top

D: 7.90"

H1: 42.10"

H2: 10.08"

Max Weight: 18.3lbs



PERFORMANCE

CRI

70+

CCT

3000K, 4000K, 5000K

Dimming

0-10V Dimming Standard

Projected Lifetime

L70 - 127,000 Hours

Working Temperature

-4-104°F (-40-40°C)

Certifications

- cULus Listed
- Suitable for wet location
- RoHS compliant

Ordering Information

Example: DB24401-V

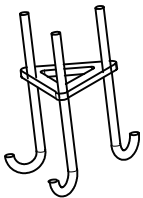
Top	Watts	CCT	Voltage	Controls	Distribution	Lens	Finish
DB = Dome Top Bollard ¹	12 - 12W	22 - Amber in 2200K ²	1 - 120-277V	Blank - None	V - Type V	Blank - PC clear lens	Standard Blank -Bronze
FB = Flat Top Bollard	24 - 24W	30 - 3000K ³					Optional*
PB = Peak Top Bollard		40 - 4000K					BK - Black
		50 - 5000K					WH - White
							GY - Grey
							(See Notes)

Note:

- DLC is only available for 24W Dome Top.
- The 2200K is for Amber LED use. More information is in the following wavelength chart. It is special and may need long lead time, please contact Customer Service for details.
- DLC is not available for 2200K and 3000K.

* Standard Finish is Dark Bronze. Allow 4-6 weeks for optional finish. Additional charge will apply.

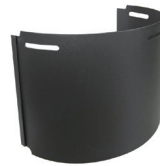
ACCESSORIES (ORDER SEPARATELY)



90245

ABMK01

Anchor bolt (M10) mounting
kits for standard bollard



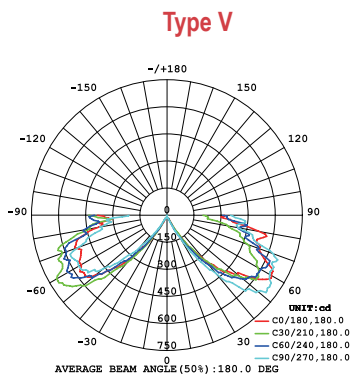
90541

BOLLARD-SS-180°

180° SIDE SHIELD for
standard bollard

PHOTOMETRY

All published luminaire photometric testing performed to IESNA LM-79-08 standards by a NVLAP certified laboratory.



PERFORMANCE DATA

LUMEN OUTPUT

Lumen values are measured by third party certified laboratories performed in accordance with IESNA LM-79-08 as well as Lighting Facts listed.

Watts	Lumen Output	AC Input 120V	CRI	CCT	Dist. Type	LPW
12W	1340lm	0.19A	>70	4000K	Type V	112
24W	2500lm	0.22A	>70	4000K	Type V	104

CCT	Lumen Multiplier
4000K	1
3000K	0.93
2200K	0.84

Projected LED Lumen Maintenance

Data references the extrapolated performance projections for the LED bollard in a 77°F ambient, (tested per IESNA LM-80-08 and projected per IESNA TM-21-11).

Operating Hours	0	6,000	14,000	29,000	127,000
Lumen Maintenance Factor	0.1	0.98(L98)	0.96(L96)	0.92(L92)	0.70(L70)

Lumen Ambient Temperature (LAT) Multipliers

Use these factors to determine relative lumen output for average ambient temperature from -40-104°F (-40-40°C).

Ambient		Multiplier
Celsius	Fahrenheit	
0	32	1.02
10	50	1.01
20	68	1.00
25	77	1.00
30	86	1.00
40	104	0.99

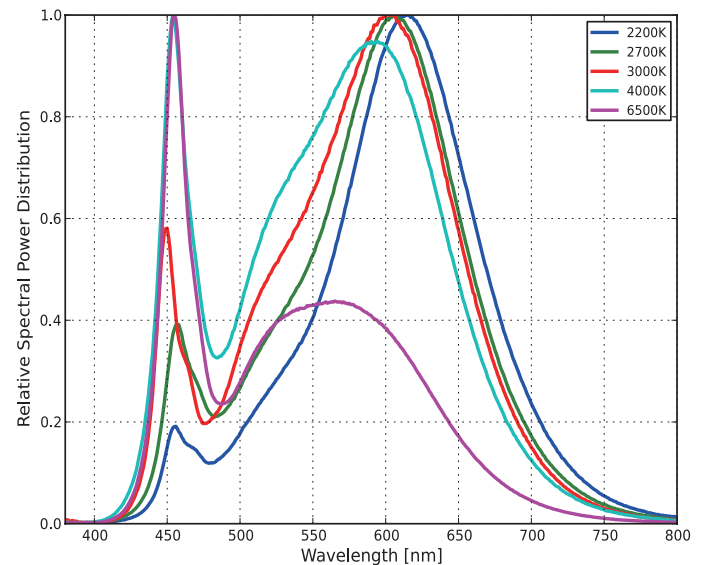
BUG Rating

Performed to IESNA LM-79-08 standards by a NVLAP accredited laboratory.

Model	BUG Rating
DB24401-V	B2-U3-G2
FB24401-V	B2-U3-G2
PB24401-V	B2-U3-G2

LED WAVELENGTH

The 2200K is for Amber LED use. It's wavelength is quite similar with the standard Amber LED.



Warranty

Five year limited warranty.

Specifications subject to change without notice.