

Wallis

ARCHITECTURAL WALL PACK PRODUCT FAMILY

alva



Wallis in Dark Bronze (DB)

Overview

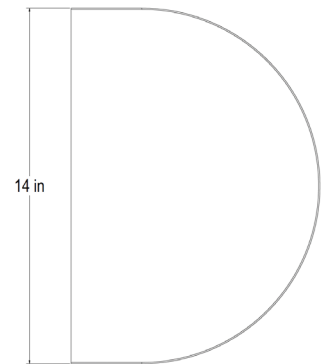
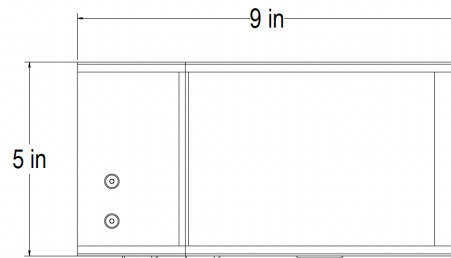
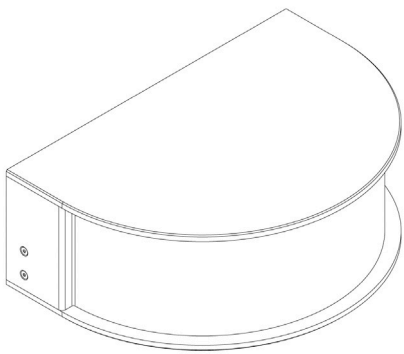
Wallis joins our wall pack family combining exceptional modernist design with superior use of LED technology. It is architecturally correct, complements the architectural details of your building. No longer are you forced to use unattractive wall packs around the exterior of your space. Wallis utilizes state-of-the-art LED optics to provide even, soft illumination without the forward throw glare normally associated with path of egress lighting.

IP66

10YR
WARRANTY

DARK
SKY

TITLE
20



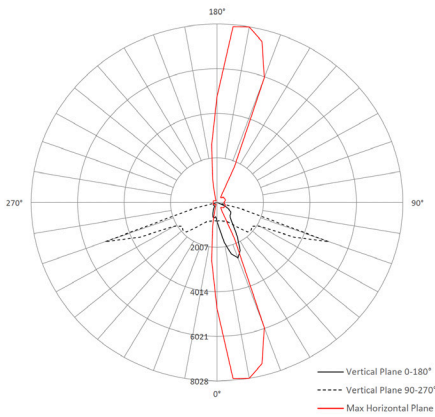
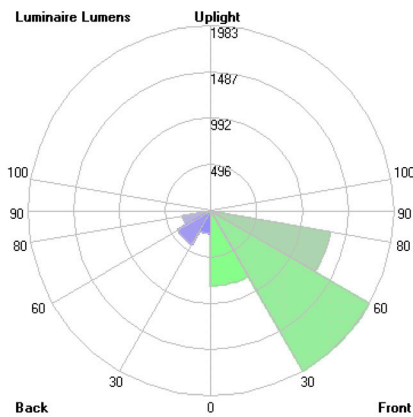
WATTAGE	41
DELIVERED LUMENS	5107
OPTIC OPTIONS	Type 2, Type 3, Type 4
INPUT VOLTAGE	120-277
INGRESS	IP66
CCT OPTIONS	2700, 3000, 3500, 4000
OCCUPANCY SENSOR, STANDARD	Factory set at Bi-level 100/30% motion and low light level for 8' to 15' mounting. May be programmed in the field per your requirement.
WEIGHT	14.75 pounds
CONSTRUCTION	ALVA Proprietary WP-1 LED Module: Die cast aluminum Decorative Housing: Cold rolled steel with state of the art architectural powder coat finish
WARRANTY	10 years

Sensor Operation Overview

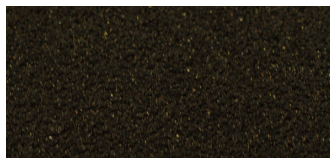
Dimming Function

This function inside the motion sensor to achieve tri-level control. for some areas which require a light change notice before switch-off. The sensor offers 3 levels of light: 100%-->dimmed light (natural light is insufficient) J-->off; and 2 periods of selectable waiting time: motion hold-time and stand-by period; Selectable daylight threshold and freedom of detection area.

Sensor Remote Programmer Unit, RC-100, (available for purchase from ALVA for field programming)



Available in Dark Bronze Powder Coat Finish:



Dark Bronze **DB**

ORDER CODE:

MODEL	CCT	OPTICS	FINISH
WALLIS			DB
	27 2700 30 3000 35 3500 40 4000	T2 Type 2 T3 Type 3 T4 Type 4	DB Dark Bronze