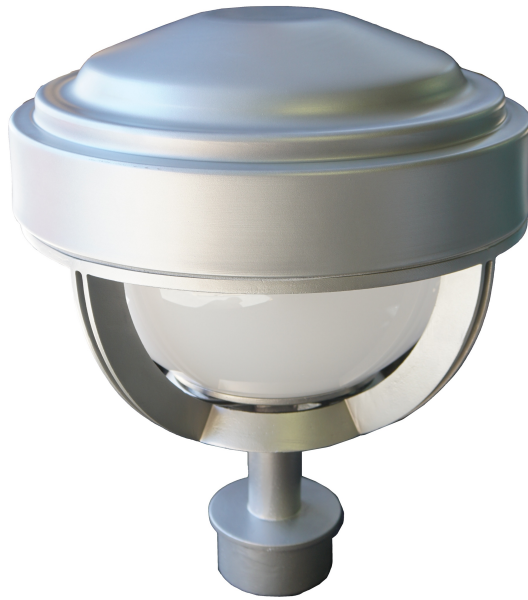




ZUMALIGHTING
QUALITY OUTDOOR SOLUTIONS



MODEL
BUENA VISTA

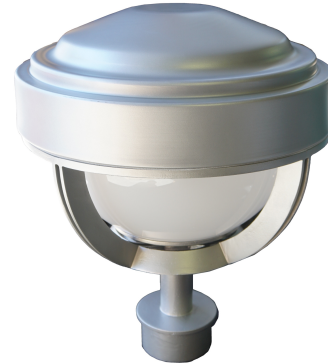
TYPE
LED POST TOP

SERIES
ARCHITECTURAL

ZUMA LIGHTING LLC
325 N LARCHMONT BLVD STE 406, LOS ANGELES, CA 90004
INFO@ZUMALIGHTING.COM • (310) 975-3126 • ZUMALIGHTING.COM

ORDERING INFORMATION

Model BUENA VISTA
Type LED POST TOP
Series ARCHITECTURAL



FIXTURE	WATTAGE	VOLTS	COLOR TEMP	OPTICS	MOUNT	LENS	COLOR	OPTIONS
BNV	20W 30W 40W 60W 80W 90W 120W	U = 120v-277v 8 = 480v	27K = 2700K 3K = 3000K 4K = 4000K 5K = 5000K	T2 T3 T4 T5	I = post top A = ●—● B = ●—●—● C = ●—●—● D = ●—●—● E = ●—●—● F = ●—●—● G = —● (wall mount)	CA = Clear Acrylic FA = Frosted Acrylic OA = Opal White Acrylic	DB = Dark Bronze BK = Black WH = White SL = Silver CC = Custom	M = Motion Sensor PC = Photocell D = Dimming S = Surge Protection LS = 180° Cutoff Shield

SPECIFICATIONS

Housing

The fixture housing is constructed from ultra-thick, heavy duty cast aluminum.

Lens

Dome shaped acrylic lens available in clear, frosted, and opal white.

Electrical Components

EncapLED, an IP66-rated ETL and DLC listed LED module system, combines optics and heat sink into one configurable unit which give precise light distribution. Available in types II, III, IV & V. It allows us to do 10w., 30w. & 40w. increment adjustment on light output. The module achieves 110-120 lm/w efficacy with LUXEON LUMILEDS TX CHIPS. Beside maximizing heat dissipation surface, we also utilize convection-based heat management which creates additional air flow around each chip. Unlike a big metal heat sink where the temperature for the chips in the middle is higher than the rest, the heat of each EncapLED chip gets dissipated evenly. A better heat dissipation design keeps the junction temperature low and ultimately prolongs the life of the LED chips. Our modules are available in any of our fixture designs, as well as in a simple retro-fit kit form for existing fixtures.

Finish

Thermoset polyester oven-baked powder coat, in any standard color. Custom colors are available to your specification.

Mounting

The fixture includes a 3-1/2" OD reverse tenon to slip into a 4" OD x .120 wall pole, supplied by others. A 4-1/16" dia. flange is welded between the reverse tenon and the 3" od x 4" tall extension tube and acts as a stop to retain the unit in place on top of the poles.

The poles should be drilled and tapped and include stainless steel Allen screws to secure and retain the unit. The stainless steel Allen screws are to be provided by the pole supplier.

Fixture can also be installed on mounting arms, sold separately.

Dimensions

