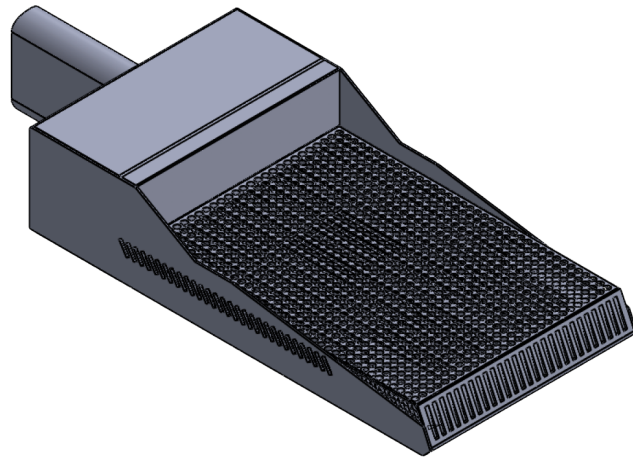




ZUMALIGHTING
QUALITY OUTDOOR SOLUTIONS



MODEL
GUARDIAN 200w

TYPE
LED

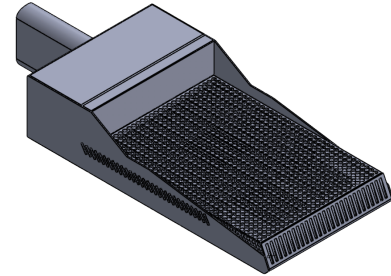
SERIES
SITE & AREA



ZUMA LIGHTING LLC
325 N LARCHMONT BLVD STE 406, LOS ANGELES, CA 90004
INFO@ZUMALIGHTING.COM • (310) 975-3126 • ZUMALIGHTING.COM

ORDERING INFORMATION

Model GUARDIAN
Type LED
Series SITE & AREA



FIXTURE	SIZE	WATTAGE	VOLTS	COLOR TEMP	OPTICS	MOUNT	COLOR	OPTIONS
GRD = GUARDIAN	20 = 14.25"W x 21.19L x 6.96H	200w	U = 120v- 277v	3K = 3000K 4K = 4000K 5K = 5000K AMB = Amber LED	T2 T3 T4 T5	A = ●—● B = ●—●—● C = ●—●—● D = ●—●—●—● E = ●—●—● F = ●—●—●—● G = ●—● (wall mount)	DB = Dark Bronze BK = Black WH = White SL = Silver CC = Custom	M = Motion Sensor D = 0 -10v dimming driver S = Surge Protection SC = Spill Control / House side Internal Shielding RPA = Round Pole Adapter SPA = Square Pole Adapter



SPECIFICATIONS

Housing Construction

- Aluminum
- External cooling fins
- Corrosion resistant external hardware

Electrical Components

- (4) 2" x 2" LED squares, 50w ea. @ 4,242.5 lumens
- 200w = 16,970 total lumens = 84.85 lm/W
- 700 mA
- 120-277v
- Amber LED
- Type II, III, IV, or V
- 0-10V dimming driver
- All internal wiring UL certified for 600 VAC and 105°C
- All drivers, controls, and sensors housed in enclosed IP-65 compartment
- CRI >70

Certificates & Warranty

- Made in the USA
- ETL
- Suitable for Wet Locations
- 5-Year limited warranty for drivers and LEDs

Specifications are subject to change without notice

Mounting

- Includes bolt on mounting arm for square (SPA) or round (RPA) pole.
- Optional round pole adapter (RPA) for simplified mounting to the side of round pole

Finish

- 3-5 mils electrostatic powder coat.
- Choose any standard Zuma Lighting color or specify custom RAL color number.

DIMENSIONS

