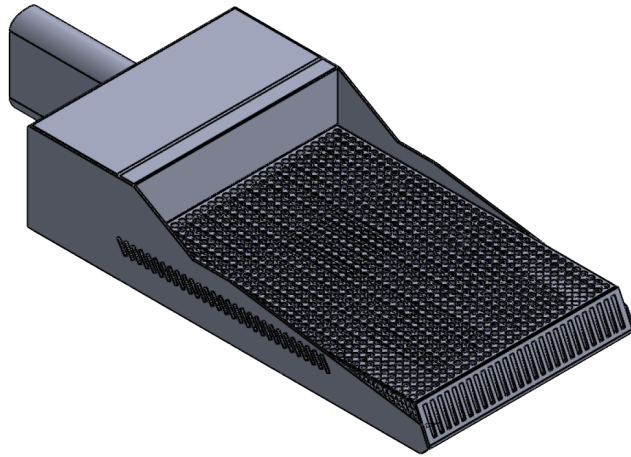




**ZUMALIGHTING**  
QUALITY OUTDOOR SOLUTIONS



MODEL  
**GUARDIAN**

TYPE  
**LED**

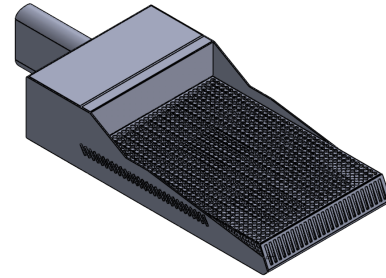
SERIES  
**SITE & AREA**










**ZUMA LIGHTING LLC**  
325 N LARCHMONT BLVD STE 406, LOS ANGELES, CA 90004  
[INFO@ZUMALIGHTING.COM](mailto:INFO@ZUMALIGHTING.COM) • (310) 975-3126 • [ZUMALIGHTING.COM](http://ZUMALIGHTING.COM)

# ORDERING INFORMATION

<b>Model</b> GUARDIAN
<b>Type</b> LED
<b>Series</b> SITE & AREA



FIXTURE	SIZE	WATTAGE	VOLTS	COLOR TEMP	OPTICS	MOUNT	COLOR	OPTIONS
GRD = GUARDIAN	30 = 14"W x 27.608L x 6.213H	561w	U = 120v- 277v  8 = 480v	3K = 3000K  4K = 4000K  5K = 5000K	T2  T3  T4  T5	A =  B =  C =  D =  E =  F =  G =  (wall mount)	DB = Dark Bronze  BK = Black  WH = White  SL = Silver  CC = Custom	M = Motion Sensor  D = 0 -10v dimming driver  S = Surge Protection  SC = Spill Control / House side Internal Shielding  RPA = Round Pole Adapter

## Housing Construction

- Aluminum
- External cooling fins
- Corrosion resistant external hardware

## Electrical Components

- (11) 2" x 2" LED squares, 51w ea. @ 5120 lumens
- 561w = 56320 total lumens = 100.39 lm/W
- 1050 mA
- 480v
- 4000K
- Type II distribution with internal shielding
- 120-277 Volts (UNV) or 480 Volts (8)
- 0-10V dimming driver
- All internal wiring UL certified for 600 VAC and 105°C
- All drivers, controls, and sensors housed in enclosed IP-65 compartment
- CRI >70
- Color temperatures: 3000K, 4000K, 5000K

## Mounting

- Optional round pole adapter (RPA) for simplified mounting to the side of round pole

## Finish

- 3-5 mils electrostatic powder coat.
- Choose any standard Zuma Lighting color or specify custom RAL color number.

## Certificates & Warranty

- Made in the USA
- ETL
- Suitable for Wet Locations
- 5-Year limited warranty for drivers and LEDs

*Specifications are subject to change without notice*

