

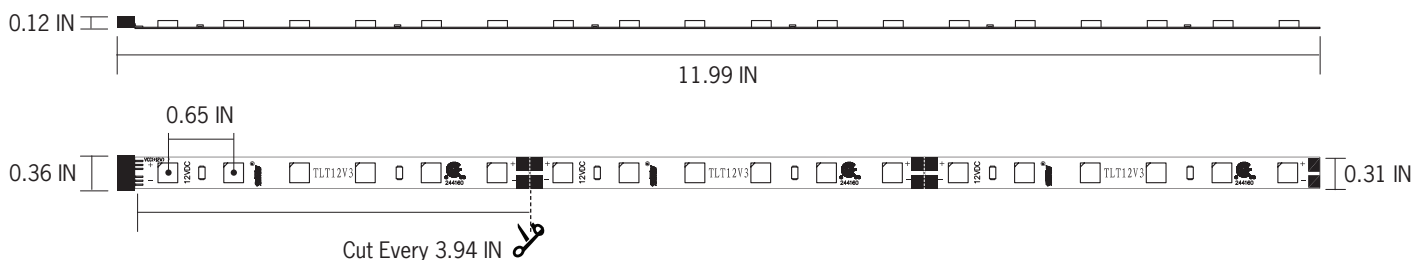
DATE

PROJECT

TYPE

# TLT12V3 | 12V Super High Output (SHO) Performance LED Tapelight

WATTAGE	3.2W/Ft
LUMEN OUTPUT	440Lm/Ft (3000K)
LED DENSITY	18 LED/Ft (0.65" Spacing)
COLOR TEMPERATURE	Static White: 2200K, 2700K, 3000K, 3500K, 4000K, 6500K Static Color: Blue, Green, Red and Yellow (20 Ft Reel Only)
CRI	80+
SYSTEM RATING	50,000 Hours @ 70% Lumen Maintenance
INPUT VOLTAGE	12V
DIMMING	Dimmable using dimmable power supplies, controllers or DMX interface
RUN LENGTH	12 Ft Max
AMBIENT OPERATING TEMP	-4° to 104°F (-20° to 40°C)
LISTING	cCSAus Certified to UL Standards Suitable for Dry or Damp Locations Not Suitable for Wet Locations Closet Rated
WARRANTY	Full replacement guarantee after date of purchase: - Five years when installed with mounting channel - Three years when installed without mounting channel



## Ordering Information

Example Order: TLT12V33K12R

Tapelight Series	Output	Color Temp		Length/Quantity
TLT12V - 12VDC Performance LED Tapelight	3 - Super High Output	22K <sup>1</sup> - 2200K	B <sup>1,2</sup> - Blue	12 - 12 In Individual Segment
		27K - 2700K	G <sup>1,2</sup> - Green	12R - 20 Ft Reel of 12 In Segments (20 Pieces Total, Actual Length 19.75 Ft)
		3K - 3000K	R <sup>1,2</sup> - Red	16CR - 16 Ft Continuous Reel (Actual Length 15.76 Ft)
		35K <sup>1</sup> - 3500K	Y <sup>1,2</sup> - Yellow	
		4K <sup>2</sup> - 4000K		
		6K - 6500K		

1. Not available in Continuous Reel  
2. Not available in 12" Individual Segments

DATE

PROJECT

TYPE

# TLT12V3 | 12V Super High Output (SHO) Performance LED Tapelight

## Product Details

### Features

- Flexible, low voltage linear LED accent lighting system provides high quality illumination for many indoor applications
- Modular “plug and play” system, no need for field soldering
- Wide range of power supplies, controllers, connectors and mounting channels
- Available in:
  - Individual 12" segments with male and female connector ends
  - 20' Reels consisting of connected, individual 12" segments
  - 16' Continuous reels (no mid-connectors); one male and one female connector end
- TLT12V3 Series can be cut (on the cut lines) in 4" increments
- Easy to install using the 3M Double Sided Adhesive on each segment; tape can be directly mounted to most surfaces
- For additional thermal heatsinking, protection of the LEDs and an overall cleaner aesthetic, using the aluminum mounting channel is recommended
- For added protection of the LEDs and subtle diffusion and glare control, a clear or frosted lens may be used; lens must be used with the aluminum mounting channel and is easily installed

### Performance Summary

- High output LEDs provide excellent luminous intensities at low drive currents
- Low power consumption and consistent, stable performance
- TLT 12V Super High Output Performance LED Series is available in static white: 2200K, 2700K, 3000K, 3500K, 4000K and 6500K, as well as four static colors: Blue, Green, Red and Yellow. Colors are not available in Continuous Reel or Individual 12" segments.
- Delivers up to 440 lumens at 3.2W per foot (delivered lumens based on 1ft. of 3000K tape)
- Single run length up to 12 feet on one 60W power supply
- Dimmable using any of the TL series dimming controls
- System designed and rated for 50,000 hours at 70% lumen maintenance when mounted in the ConTech aluminum mounting channel
- cCSAus Certified to UL standards
- Suitable for dry or damp locations
- Not suitable for wet locations

### Warranty

- Covered by ConTech's full replacement guarantee after date of purchase:
  - Five (5) year replacement guarantee when tape light is installed using the aluminum mounting channel
  - Three (3) year replacement guarantee when installed without the aluminum mounting channel

## Run Lengths

TLT12V 12V POWER SUPPLY INPUT: 12V DC	TLT12V3 SUPER HIGH OUTPUT (SHO) 3.2W/FT	
	MAX RUN	MAX SPLIT
20W	5 FT	5 FT
24W	6 FT	6 FT
36W	10 FT	10 FT
50W	12 FT	13 FT
60W	12 FT	16 FT

- Max split can be split more than once, without exceeding the max single run in each leg.
- Max Run refers to the total single run of tapelight that can go on a power supply. Max Split refers to the total amount of tapelight that can go on a driver if it were separated into two runs.
- Max Run lengths are calculated with 12V or 24V DC at the start of the tape run. Voltage drop may occur if not using proper wire gauge. Please refer to the Voltage Drop and Wire Length Distance chart.
- Max Run lengths are calculated with no more than 30% light loss from the start of the tape run to the end of the tape run for optimal light consistency. If run lengths are extended beyond the recommended lengths noted above, there will be inconsistent light output and voltage drop.
- Overall distance of LED tape under load [illuminated sections]. If exceeded damage to the power supply and LED tape may result.

DATE

PROJECT

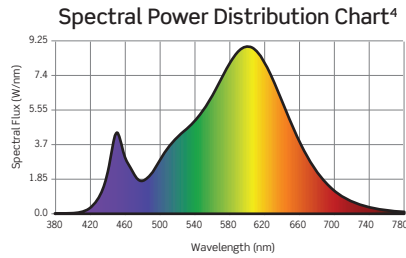
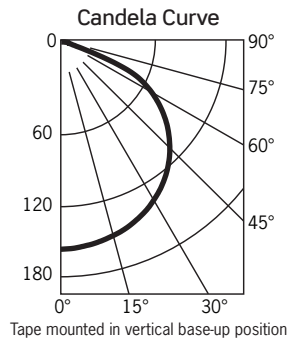
TYPE

# TLT12V3 | 12V Super High Output (SHO) Performance LED Tapelight

## Photometrics

### TLT12V33K12

Fixture Delivered Lumens: 442  
 Total Watts@120V: 6.4  
 Lumens Per Watt: 69.1  
 Center Beam Candle Power: 158.0  
 Beam Distribution: 116°  
 Spacing Criterion: 1.3  
 Color Rendering Index (CRI)<sup>1</sup>: 80  
 Color Temperature (CCT)<sup>2</sup>: 3042K  
 Designed for 50,000 Hour Lamp Life<sup>3</sup>  
 LM-63 Test No. 87096  
 LM-79 Test No. 87096



1. Accuracy of rendering colors 2. Color appearance of light source 3. Dependent on surrounding temperatures 4. Colors present within the light source

1. Accuracy of rendering colors 2. Color appearance of light source 3. Dependent on surrounding temperatures 4. Colors present within the light source

DATE

PROJECT

TYPE

# PERFORMANCE LED TAPELIGHT | 12V Power Supplies

## 12V Plug-In Power Supplies



**TLP12VP24**  
 12V/24W Plug-and-Play Power Supply  
 120VAC/12VDC. Includes AC wall plug and female power output barrel plug for easy installation.  
 3-1/4" L x 1-3/4" W x 1-1/4" D  
 System length: 6'  
 Use with 12V Performance LED Tapelight



**TLP12VP Series**  
 12V Plug-and-Play Power Supplies  
 120VAC/12VDC. Includes AC wall plug and female power output plug for easy installation.  
 4" L x 2" W x 1-1/4" D  
 Use with 12V Performance LED Tapelight

**TLP12VP24** - 12V/24W Plug-and-Play Power Supply **Quantity**

**Power Supply/Wattage** **Quantity**  
**TLP12VP36** - 36W, System Length 10'  
**TLP12VP60** - 60W, System Length 12'

## 12V Hardwire Power Supplies



**TLP12VHW Series**  
 Hardwire Power Supply  
 120VAC/12VDC. Includes stripped and tinned wire pigtailed on the input and output sides. **MUST BE MAINTAINED WITHIN AN ENCLOSURE THAT MEETS LOCAL BUILDING CODES AND NEC (SUPPLIED BY OTHERS).** 2' Wire leads. Class 2 recognized.  
 Use with 12V Performance LED Tapelight



**TLP12VHW \* MV-ENC Series**  
 Hardwire Class 2 Constant Voltage Driver  
 120 – 277VAC/12VDC Dimming and non-dimming Class 2 Constant Voltage LED Drivers. UL Listed enclosure with built-in junction boxes. No minimum load requirement. Auto-reset protection for short circuit and over-temperature. Over load protection in CC mode. 0-10V Dimming driver delivers smooth flicker free linear dimming down to 1% with most LEDs and a wide variety of compatible dimmers. Suitable for both indoor and outdoor installations.  
 Use with 12V Performance LED Tapelight

**TLP12VHW20** **Quantity**  
 20W 12V 120VAC: 4-3/4" L x 1-3/16" W x 1" D  
**TLP12VHW60**  
 60W 12V 120VAC: 6-1/2" L x 1-3/4" W x 1-1/4" D

**TLP12VHW50MV-ENC** **Quantity**  
 50W 12V 120-277VAC, Non-Dimming Driver  
**TLP12VHW50MVD2-ENC**  
 50W 12V 120-277VAC, 0-10V Dimming Driver



**TLP12VHW \* -ENC Series**  
 Hardwire Class 2 Enclosed Driver  
 120VAC/12VDC. Dimmable Class 2 listed driver. Compact self-enclosed driver with two (2) knockouts. Auto Reset and short circuit protection. Dimmable with standard MLV/Incandescent TRIAC (leading edge) dimmers; 8W min. load required for smooth dimming.  
 6-3/4" L x 2-5/8" W x 1-1/4" D  
 Use with 12V Performance LED Tapelight, not to be used with RGB tapelight series.

**TLP12VHW20-ENC** - 20W 12V 120VAC **Quantity**  
**TLP12VHW60-ENC** - 60W 12V 120VAC

DATE PROJECT TYPE

# PERFORMANCE LED TAPELIGHT | 12V & 24V Power Supply Accessories

## Plug-and-Play Power Connectors



**TLCEXT Series**  
*Plug-and-Play Power Supply Extension*  
Includes male and female plug connectors.  
Use with 12V or 24V Performance LED Tapelight  
*Not compatible with 24V RGBW Performance LED Tapelight series*



**TLCIP Series**  
*Static Color Male Power Connector*  
Includes one (1) male plug connector and one (1) male flex tape connector.  
Use with 12V or 24V Static Color Performance LED Tapelight

TLCEXT24 - 24 IN      TLCEXT48 - 48 IN      Quantity  
TLCEXT36 - 36 IN      TLCEXT96 - 96 IN

TLCIP12 - 12 IN      TLCIP19 - 19 IN      Quantity



**TLCS2**  
*Plug-and-Play 2-Way Splitter*  
Includes one (1) male and two (2) female connectors. Approximately 2 Ft long.  
Use with 12V or 24V Performance LED Tapelight  
*Not compatible with 24V RGBW Performance LED Tapelight series*



**TLCOP12**  
*Static Color Female Power Connector*  
12 In. connector includes one (1) male plug connector and one (1) female flex tape connector.  
Use with 12V or 24V Static Color Performance LED Tapelight

TLCS2 - 12V/24V Plug-and-Play 2-Way Splitter      Quantity

TLCOP - 12 Inch 12V/24V Static Color Female Power Connector      Quantity



**TLCS3**  
*Plug-and-Play 3-Way Splitter*  
Includes one (1) male and three (3) female connectors. Approximately 2 Ft long.  
Use with 12V or 24V Performance LED Tapelight  
*Not compatible with 24V RGBW Performance LED Tapelight series*

TLCS3 - 12V/24V Plug-and-Play 3-Way Splitter      Quantity

DATE

PROJECT

TYPE

# PERFORMANCE LED TAPELIGHT | 12V & 24V Power Supply Accessories

## Hardwire Power Connectors



### TLC CF

#### Female Connector

6 Inch long connector includes a wire pigtail end and a female plug connector on the other end. Used to add plug and play female connector to hardwire power supplies.

Use with 12V or 24V Performance LED Tapelight

TLC CF - 12V/24V Hardwire Female Connector

Quantity



### TLC CM

#### Male Connector

6 Inch long connector includes a wire pigtail end and a male plug connector on the other end. Used for easy plug in connection to plug and play power supply and wire end can be connected to RGB controller at the screw terminals.

Use with 12V or 24V Performance LED Tapelight

TLC CM - 12V/24V Hardwire Male Connector

Quantity



### TLC IP \* HW Series

#### Male Power Connector

Includes wire pigtail end and one (1) male flex tape connector.

Use with 12V or 24V Performance LED Tapelight

TLC IP12HW - 12 IN

TLC IP19HW - 19 IN

Quantity

TLC IP19HW-12AWG10FT

19 IN Connector with Additional 10 Ft 12AWG Red & Black Wires

TLC IP19HW-12AWG20FT

19 IN Connector with Additional 20 Ft 12AWG Red & Black Wires



### TLC OP12HW

#### Female Power Connector

12 In. connector includes wire pigtail end and one (1) female flex tape connector.

Use with 12V or 24V Performance LED Tapelight

TLC OPHW - 12 IN 12V/24V Hardwire  
Female Power Connector

Quantity

## Linear Connectors



### TLC M Series

#### Bridge Connector

Blank section used to bridge gaps where LEDs are not necessary.

Use with 12V or 24V Performance LED Tapelight

TLC M2 - 2 IN

TLC M6 - 6 IN

Quantity

TLC M12 - 12 IN



### TLC X

#### Cross Connector

Used to connect up to four (4) TLT segments. May be cut to create 2-way "L" connection or 3-way "T" connection.

Use with 12V or 24V Performance LED Tapelight

TLC X - 12V/24V Cross Connector

Quantity



### TLC FF

#### Short Female-to-Female Connector

Used to connect male tapelight ends (when tapelight is cut two male ends remain)

Use with 12V or 24V Performance LED Tapelight

TLC FF - 12V/24V Short Female-to-Female Connector

Quantity

DATE

PROJECT

TYPE

# PERFORMANCE LED TAPELIGHT | 12V & 24V TLT Series Static Color Controllers



**TLPRTW**  
**4-Channel Power Repeater**  
 Enables synchronized control of multiple runs from one controller.  
 5-5/16" L x 1-3/4" W x 1-1/8" D  
 Use with 12V or 24V Static Color, TW, RGB or RGBW Performance LED Tapelight

TLPRTW - 12V/24V LED 4-Channel Power Repeater Quantity



**TLPRGBRF**  
**Dimming Controller with RF Remote Control**  
 Pre-programmed functions include: color strobe, 3-channel color change and gradual brightness change. Includes two (2) programmable presets. Use with non-dimming tapelight power supplies. Not rated for outdoor use.  
 8-3/8" L x 1-5/8" W x 1-3/16" D  
 Use with 12V or 24V Performance LED Tapelight

TLPRGBRF - 12V/24V Dimming Controller with RF Remote Control Quantity



**TLPINT**  
**DMX 512 CV Decoder**  
 Designed to convert universal DMX 512 signal to PWM signal when used with a DMX 512 console (by others). Use with non-dimming tapelight power supplies. Not UL listed for outdoor use.  
 6-3/16" L x 3-1/8" W x 1-5/8" D  
 Use with 12V or 24V Static Color, TW, RGB or RGBW Performance LED Tapelight

TLPINT - 12V/24V DMX 512 CV Decoder Quantity

## IR Controllers



**TLPICB**  
**IR Cabinet Switch**  
 Allows on/off switching functionality for use with cabinet doors. 36W Max.  
 1-1/2" L x 1-3/16" W x 5/16" H  
 Use with 12V or 24V Performance LED Tapelight

TLPICB - 12V/24V IR Cabinet Switch Quantity



**TLPWV**  
**IR Wireless Waving Switch**  
 Allows wireless on/off switching functionality by waving an object within the IR field. 36W Max.  
 1-1/2" L x 1-3/16" W x 5/16" H  
 Use with 12V or 24V Performance LED Tapelight

TLPWV - 12V/24V IR Wireless Waving Switch Quantity



**TLPDIM10V**  
**Static Color 0-10V Dimming Module**  
 For use with standard 0-10V dimmers. Dimming down to 15%. Not UL listed for outdoor use. Use with non-dimming tapelight power supplies.  
 4-3/4" L x 1-1/2" W x 1-1/2" D  
 For use with 12V or 24V Static Color Performance LED Tapelight  
*Not compatible with 12V or 24V TW, RGB or RGBW Performance LED Tapelight*

TLPDIM10V - 12V/24V Static Color 0-10V Dimming Module Quantity



**TLPIDM**  
**Tapelight Touch Dimmer**  
 Allows adjustment of the brightness of the LEDs by touching the controller housing. 36W Max.  
 1-1/2" L x 1-3/16" W x 5/16" H  
 Use with 12V or 24V Performance LED Tapelight  
*Not compatible with TW, RGB or RGBW Performance LED Tapelight*

TLPIDM - 12V/24V Tapelight Touch Dimmer Quantity

DATE

PROJECT

TYPE

# PERFORMANCE LED TAPELIGHT | Mounting Channels and Accessories

## Product Details

### Aluminum Mounting Channel

- Provides excellent heat sinking and protection to the LEDs while ensuring a clean, straight run
- 6 Ft long, Silver or Black Aluminum
- Outdoor/Wet listed Performance LED Tapelight is not compatible with channel end caps or diffusion lenses, except when using the Deep Standard Channel

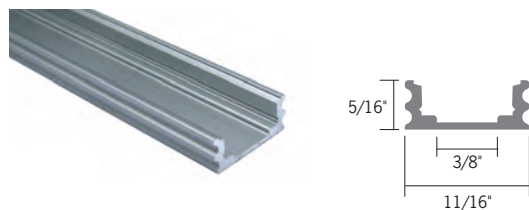
### Channel Mounting Clips

- Four (4) Mounting clips and four (4) Philips head screws per package
- 24 Inches between clips recommended for most applications
- Stainless Steel

### Channel End Caps

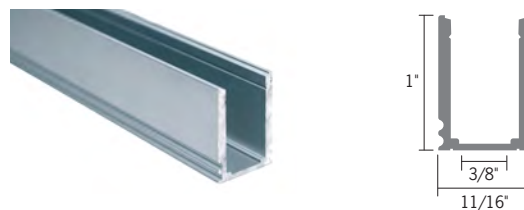
- Creates a clean finish to the mounting channel
- Two (2) end caps: one open, one closed
- ABS Plastic

## Standard and Deep Mounting Channels



**TLACS6** - 6 Ft Standard Channel, Aluminum  
**TLACS6-B** - 6 Ft Standard Channel, Black

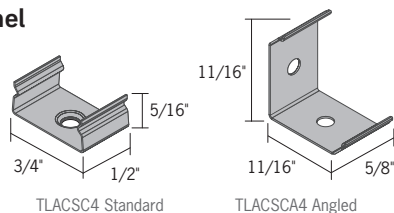
Quantity



**TLAC8T6** - 6 Ft Deep Standard Channel, Aluminum  
**TLAC8T6-B** - 6 Ft Deep Standard Channel, Black

Quantity

## Standard and Deep Channel Mounting Clips



**TLACSC4** - Four Standard Channel Mounting Clips  
**TLACSCA4** - Four Standard Channel Angled Mounting Clips

Quantity

## Standard and Deep Channel End Caps



**TLACSE2** - Two Standard Channel End Caps, Grey  
**TLACSE2-B** - Two Standard Channel End Caps, Black  
**TLAC8TE2** - Two Deep Channel End Caps, Grey  
**TLAC8TE2-B** - Two Deep Channel End Caps, Black

Quantity



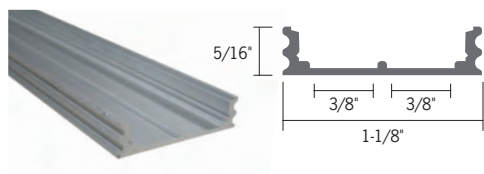
DATE

PROJECT

TYPE

# PERFORMANCE LED TAPELIGHT | Mounting Channels and Accessories

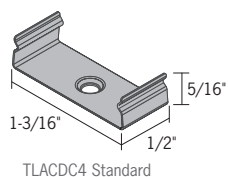
## Double Wide Mounting Channel



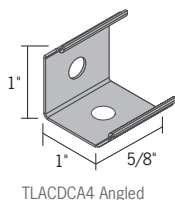
**TLACD6** - 6 Ft Double Wide Channel, Aluminum  
**TLACD6-B** - 6 Ft Double Wide Channel, Black

Quantity

### Double Wide Channel Mounting Clips



TLACDC4 Standard



TLACDCA4 Angled

### Double Wide Channel End Caps



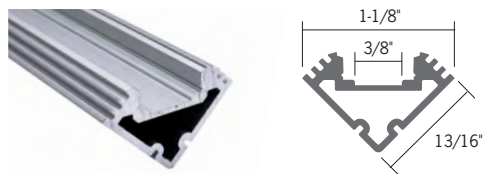
**TLACDC4** - Four Double Wide Standard Mounting Clips  
**TLACDCA4** - Four Double Wide Angled Mounting Clips

Quantity

**TLACDE2** - Two Double Wide End Caps, Grey  
**TLACDE2-B** - Two Double Wide End Caps, Black

Quantity

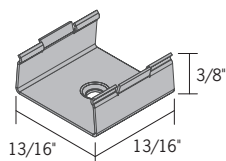
## 45° Angled Mounting Channel



**TLACA6** - 6 Ft 45° Angled Channel, Aluminum  
**TLACA6-B** - 6 Ft 45° Angled Channel, Black

Quantity

### 45° Angled Channel Mounting Clips



TLACAC4

### 45° Angled Channel End Caps



**TLACAC4** - Four Angled Channel Mounting Clips

Quantity

**TLACAE2** - Two Angled Channel End Caps, Grey  
**TLACAE2-B** - Two Angled Channel End Caps, Black

Quantity

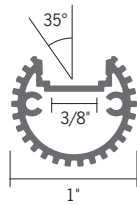
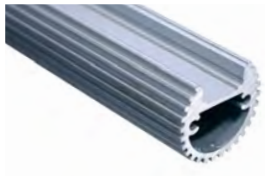
DATE

PROJECT

TYPE

# PERFORMANCE LED TAPELIGHT | Mounting Channels and Accessories

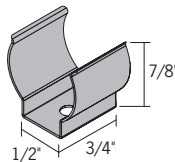
## Round Mounting Channel



**TLAC06** - 6 Ft Round Channel, Aluminum  
**TLAC06-B** - 6 Ft Round Channel, Black

Quantity

### Round Channel Mounting Clips



### Round Channel End Caps



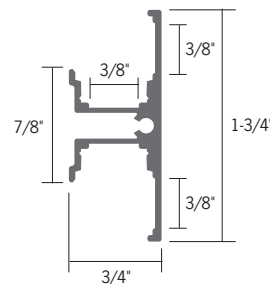
**TLACOC4** - Four Round Mounting Clips

Quantity

**TLACOE2** - Two Round End Caps, Grey  
**TLACOE2-B** - Two Round End Caps, Black

Quantity

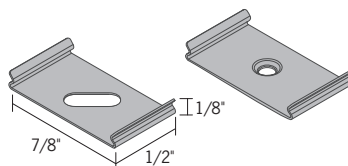
## Wall Mount "T" Mounting Channel



**TLACT6** - 6 Ft Wall Mount "T" Channel, Aluminum  
**TLACT6-B** - 6 Ft Wall Mount "T" Channel, Black  
**TLACT6-P** - 6 Ft Wall Mount "T" Channel, White

Quantity

### Wall Mount "T" Channel Mounting Clips



### Wall Mount "T" Channel End Caps



**TLACTC4** - Four Wall Mount "T" Channel Mounting Clips

Quantity

**TLACTE2** - Two Wall Mount "T" End Caps, Grey  
**TLACTE2-B** - Two Wall Mount "T" End Caps, Black  
**TLACTE2-P** - Two Wall Mount "T" End Caps, White

Quantity

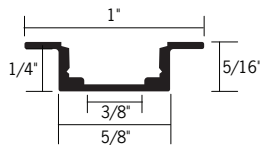
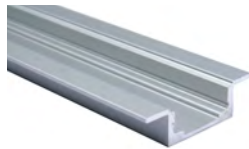
DATE

PROJECT

TYPE

# PERFORMANCE LED TAPELIGHT | Mounting Channels and Accessories

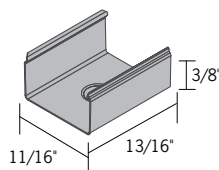
## Recessed Mounting Channel



**TLACR6** - 6 Ft Recessed Mounting Channel, Aluminum  
**TLACR6-B** - 6 Ft Recessed Mounting Channel, Black

Quantity

### Recessed Channel Mounting Clips



**TLACRC4** - Four Recessed Mounting Clips

Quantity

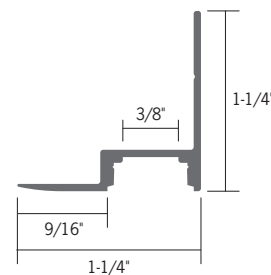
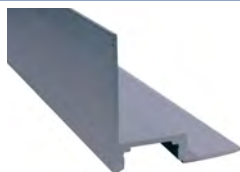
### Recessed Channel End Caps



**TLACRE2** - Two Recessed End Caps, Grey  
**TLACRE2-B** - Two Recessed End Caps, Black

Quantity

## Ceiling Edge Mounting Channel



**TLACE6** - 6 Ft Ceiling Edge Channel, Aluminum  
**TLACE6-B** - 6 Ft Ceiling Edge Channel, Black  
**TLACE6-P** - 6 Ft Ceiling Edge Channel, White

Quantity

### Ceiling Edge Channel Mounting Clips

Mounting clips are not available for the Ceiling Edge Mount Mounting Channel  
 Mount the channel by drilling holes through channel and mounting surface and screwing into place

### Ceiling Edge Channel End Caps

End caps are not available for the Ceiling Edge Mount Mounting Channel

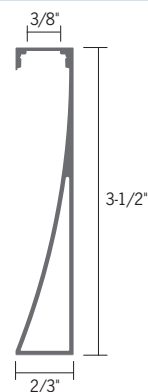
DATE

PROJECT

TYPE

# PERFORMANCE LED TAPELIGHT | Mounting Channels and Accessories

## Toe Kick Mounting Channel



- TLACK6** - 6' Toe Kick Channel, Aluminum
- TLACK6-B** - 6' Toe Kick Channel, Black
- TLACK6-P** - 6' Toe Kick Channel, White

Quantity

### Toe Kick Channel Mounting Clips

Mounting clips are not available for the Toe Kick Mounting Channel  
Mount the channel by using construction adhesive or 3M™ VHB™ tape

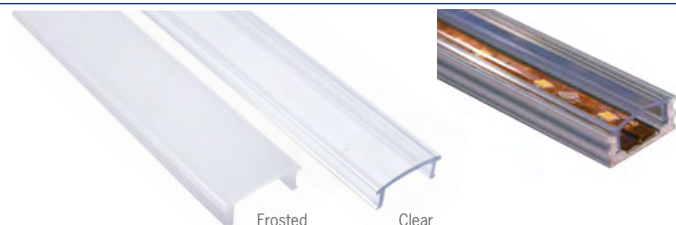
### Toe Kick Channel End Caps



- TLACKE2** - Toe Kick End Caps, Grey
- TLACKE2-B** - Toe Kick End Caps, Black
- TLACKE2-P** - Toe Kick End Caps, White

Quantity

## Diffusion Lenses



- Use with mounting channels
- Provides extra protection for the LEDs as well as diffusion to reduce glare

- TLALC6** - 6 Ft Clear Lens
- TLALF6** - 6 Ft Frosted Lens
- TLALCD6** - 6 Ft Double Wide Clear Lens
- TLALFD6** - 6 Ft Double Wide Frosted Lens

Quantity

