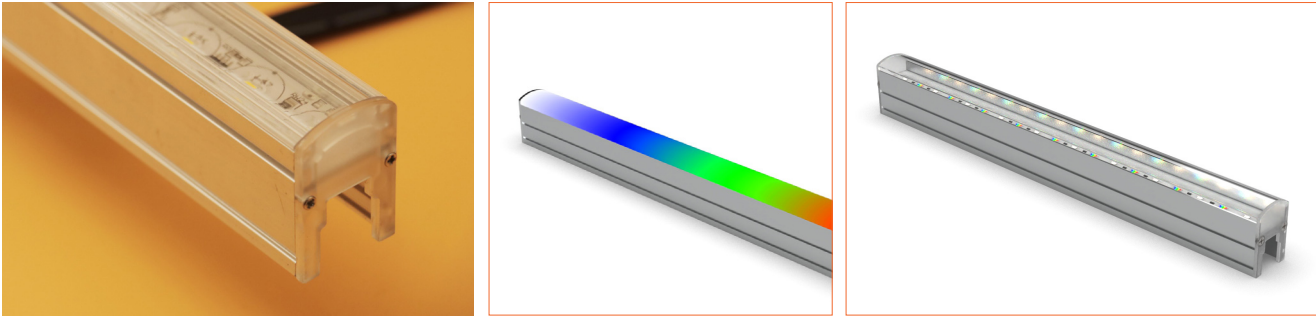


BRII LINEAR RGBW

ONE BIN ONLY principle rule
Technological application &
optical-designing
For both inside and outside
Brings various atmosphere for
needs

DMX512 control system to
manipulate



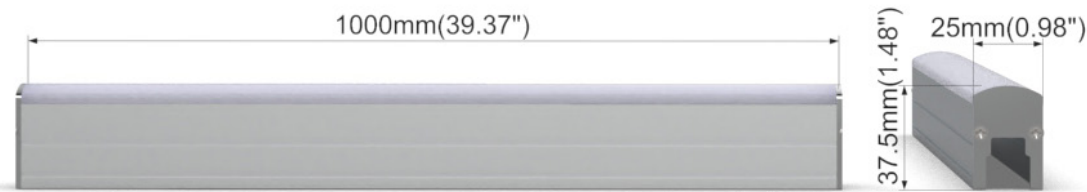


BRILI LINEAR RGBW

- With 1000*25*37.5mm size, and 12W&24V of constant voltage.
- WHT range from 2700K-6000K, and multiple colorful options.
- ONE BIN ONLY principle rule of color consistency.
- IP65 waterproof, anti-UV, anti-corrosion, and different other protections.
- DMX512 control system, with automatic self-cleaning function.
- Optional with cover spraying color, length of open-wire, installation approaches.

Product Benefits:

- Adjustable light angle from 0° -110° degrees.
- Working temperature range from -35° C to +55° C.
- Best illuminance by high-tech application & precisely designing.



Electrical data

Voltage	DC24V (23.5V _{min} 24.5V _{max})
LED/Node	48
LED Type	LUMILEDS 5050 RGBW
Lumen Efficiency	35@Clear Cover
Beam Angle	85
Storage Temperature	-20°C /-4°F~70°C /158°F
Ambient Temperature	-35°C /-31°F~55°C /131°F
Waterproof Rate	IP65
Warranty	5years warranty

UV-resistant

Waterproof IP65

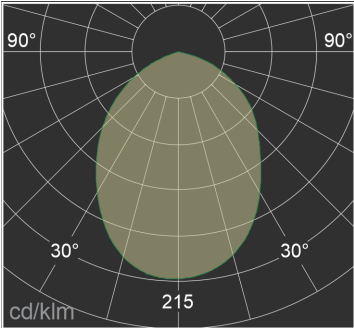
Tailor-made

Solvent-resistant

Life span> 30000H

One Bin Only

CCT	LM/Unit @Milky Cover	LM/Unit @Clear Cover	Max. Watt	Max. Interconnection (Units)
R	58	53	3	12
G	29	26	3	12
B	20	18	3	12
W27	235	214	3	12
W40	252	228	3	12
RGBW40	455	414	12	12



Important notice

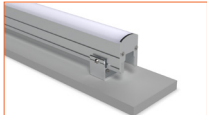
- The given data are typical values due to the tolerances of the production process and the electrical components, values for light output and electrical power can vary up to 10%.
- The given color temperature is finished product color temperature.
- Max. Interconnection refer to single side feed in serial connection based on the cable length between two nodes ≤ 1M.



Order code

SERIES NAME	COLOR	LENGTH	POWER	PC COVER
BLW RGBW	27=2700K	1000=1M	12=12W	C=Clear
	40=4000K			M=Milky

Typical mounting



Provides the best practical-space for hiding cabling & mount nodes.



Super adjustable & flexible of angle-provider which perfectly fit with different project expectations.



As the best solution for 90 degree lighting angle application.

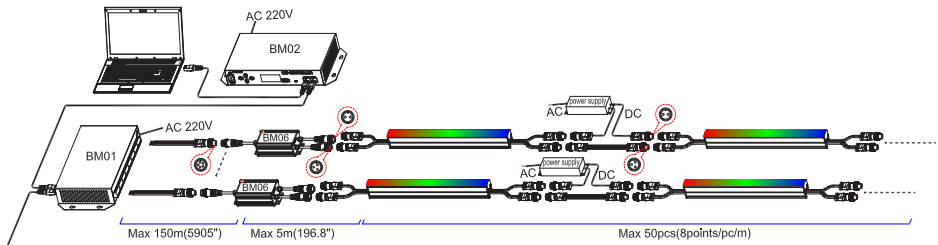
Eg: BLRGBW 27-1000-12-C: BRILI LINEAR RGBW, W=2700K, 1000mm/unit, 12W/unit, with clear PC cover.

Noted: Standard length 1000mm/unit.

Accessories

Art.#	Description	Picture	Art.#	Description	Picture
M0011	Flat mounting bracket		MF042	T shape male and female connector IP65 (the cable length between M/F connectors is 50cm)	
M0012	Recessed mounting bracket		MF043	Extension connectors, 50cm IP65	
M0013	Space mounting bracket		CR001	DMX master controller IP54, 15W Max control 150000 pixels Input Voltage AC220V	
M0014	Rotating mounting bracket		CR002	DMX slave controller IP54, 15W 8 pcs Ports with DMX512 Signals Each port max control 400 pixels Input Voltage 220V	
M0015	Right angle mounting bracket		CR003	DMX512 signal amplifier IP65 Max extend 400 pixels Each line in physical value	
MF041	Male and female connectors, 25cm IP65		XLG-150-24-A	PSU 24V/150W IP67, Non-dimmable, White, 100-305V supply	

Wiring connection



Application



Where to use the product?

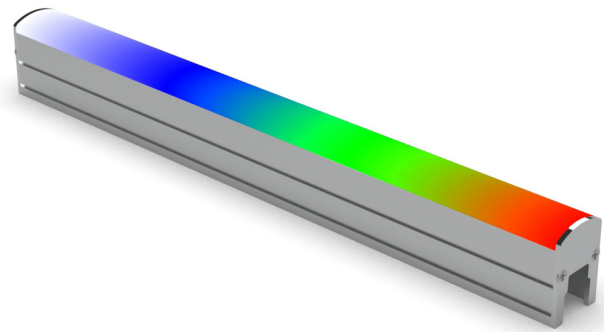
BRILI LINEAR RGBW could be used in many places, both inside and outside. For more specific, to apply the white single color for any business office, as the interior lighting decoration. To bright the space, and make the whole atmosphere become the most direct of commercial-sense.

Or to put inside of jewelry counter, to highlight the shine of diamond, to present the flawless quality of diamond. Generally, BRILI LINEAR RGBW be applied in the most commercial, high-class, and professional places.

Why our BRILI LINEAR RGBW always the priority consideration?

BRILI LINEAR RGBW always be the very first consideration when people are doing lighting project. And in the most of time, it be applied in the most commercial, high-class, and professional places. For example, the very luxury hotels, high-class type of SPA, center business building in downtown, large park, or exhibition hall either for artwork or jewelry. What makes BRILI LINEAR RGBW becomes so popular and successful type of light?

Being so strategically to consider about the lighting design. Purpose on maintain the precise of lighting-consistency, increase the rate of luminous flux, or apply the principle of the light refraction to redistributed the side light and peripheral light. To greatly improves the original light distribution structure, reduces glare, and inevitably pollution to the ring. To achieve the close degree of the brightness of the far and near viewing angles, and optimize the light distribution and the actual viewing angle effect. keep on ONE BIN ONLY which better to achieve the color-consistence & color tolerance within 2 steps which with no or less of the voltage drop. Real project in 2017, be applied as the decoration for Wanda Plaza in JiaoZhuo, China. Totally used 1200 suits of linear lights, and applied the stainless mounting clips as the installation. That was really impressive and best illuminance providing for the light showcase.



Technology:an open asynchronous serial digital communication protocol for intelligent lighting control system; Through system editing, each light can be uniquely addressed and centrally controlled, individually controlled, grouped controlled or scene controlled. RDM realizes linear control of brightness, color temperature, and can control a variety of complex special-shaped arranged lights. Support remote control, and the controller has buttons, can set the corresponding parameters, support text, video, image and other media information fragment selection, brightness adjustment, timing play and white balance adjustment and other functions, or set different scene mode, task planning, energy consumption monitoring, health status monitoring lights; Display in architecture and other landscape lighting, produce dazzling colorful change effect.

Installation: the first step: according to the actual installation site and the length of the light, the position of the installation card is drawn and marked at a fixed point, or the expansion plug can be fixed. Second step: fix the mounting card on the mounting surface with the screwdriver tool, and then insert the light into the mounting card. Third step: to complete, check the light is not loose, then carry out the subsequent operation. Other installation methods can be determined according to customer requirements, easy installation, maintenance and replacement.Flat bottom bracket mounting method, rotating bracket mounting method, and the right Angle bracket installation. Totally fit with different project requirements. Very flexible and professional application.

Practicability: It is a very scientific and technological controllable lighting products, from near to far, retain the highly color consistency. The light body is exquisite of appearance, and the material is very durable and dependable, such as UV resistance, chemical corrosion resistance, waterproof, and strong adaptability to different climate changes. DMX512 control system is used to transmit the signal of lights, which perfectly combines the use of science and technology with the design of

What is the key point here?

Line light transmission signal adopts double-wire parallel control technology, with high brightness and high brush. All kinds of different design conceptions & applications, e.g., new drainage structure design, professional heat dissipation design, the installation-design of being max seamless, or the optical design which really stable and homogeneous lighting outcome without any screen-flashing. Adopt new technology and new materials to resist sea wind erosion, cold and weather resistance, and make high-quality products. Professional appearance design, Seiko quality, for you really presented exquisite details, create a visual comfortable atmosphere lighting environment.

lighting. In all kinds of buildings, advertising screens, TV walls, amusement park lighting atmosphere, video or motion pictures can be broadcast freely. Very easy to load, very beautiful light and color. Modern architecture can not only be illuminated with a custom light solution, but also be displayed in an attractive way.

System: BRILI LINEAR RGBW apply the DMX512 control system, which is the most useful and high-tech right now. DMX512 as a standard for digital communication networks that are commonly used to control lighting and effects. It was originally intended as a standardized method for controlling light dimmers, which, prior to DMX512, had employed various incompatible proprietary protocols. It soon became the primary method for linking controllers (such as a lighting console) to dimmers and special effects devices such as fog machines and intelligent lights. DMX has also expanded to uses in non-theatrical interior and architectural lighting, at scales ranging from strings of Christmas lights to electronic billboards and stadium or arena concerts. DMX can now be used to control almost anything, reflecting its popularity in theaters and venues.



Beamever

Address: 100 N Howard St Ste R,
Spokane, WA, 99201-0508 USA
Tel: 323-5104660
info@beamever.com
www.beamever.com